

DOMINION THEATRE

TOTTENHAM COURT ROAD

10/10/1934

2322

2322

2322

VENTILATING PLANT, BOILER HOUSE ETC.
20'50" B.D.

STAGE

BASEMENT
16'50" B.D.

ELECTRICAL
1'00" B.D.

ELECTRICAL

ELECTRICAL

DIRECTOR'S OFFICE

2322

2322

BASEMENT PLAN



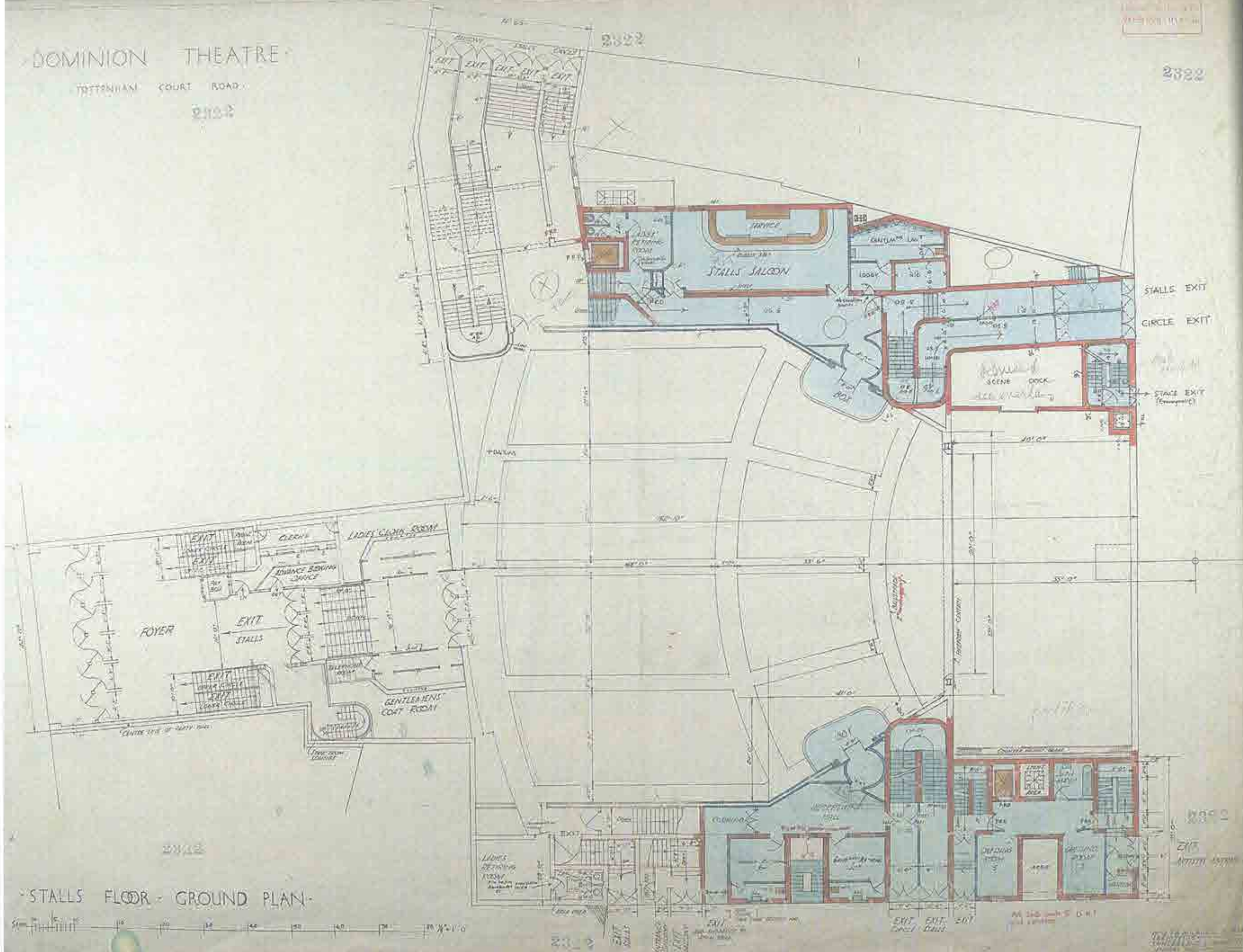
DOMINION THEATRE

TOTTENHAM COURT ROAD

2113-2

2113-2

2113-2



STALLS FLOOR - GROUND PLAN

DOMINION THEATRE

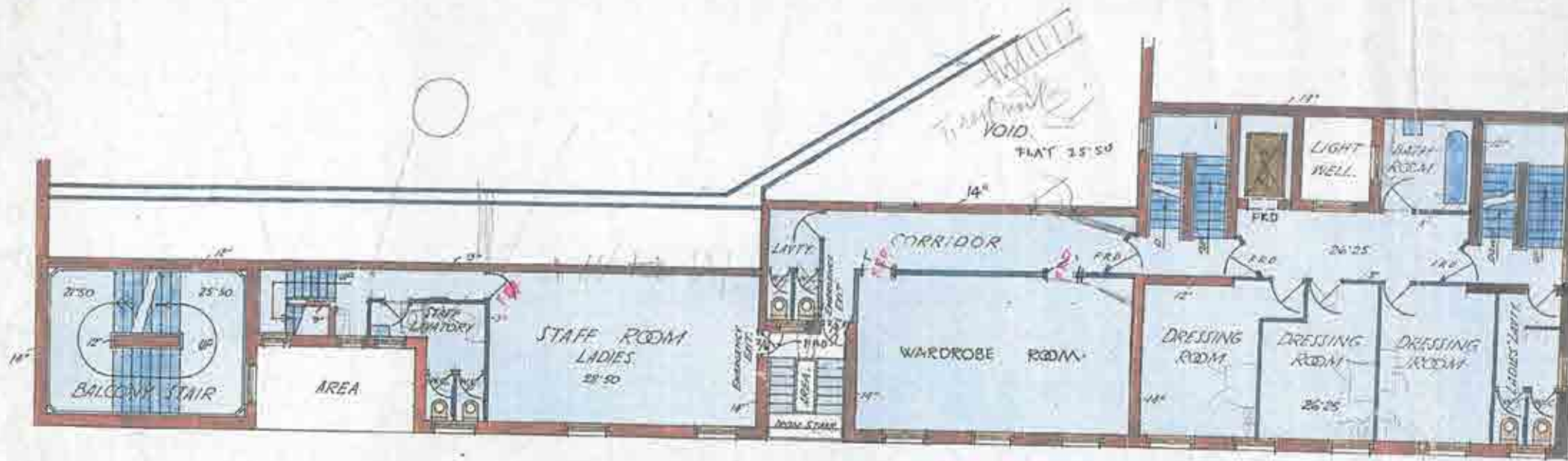
TOTTENHAM COURT ROAD

2322

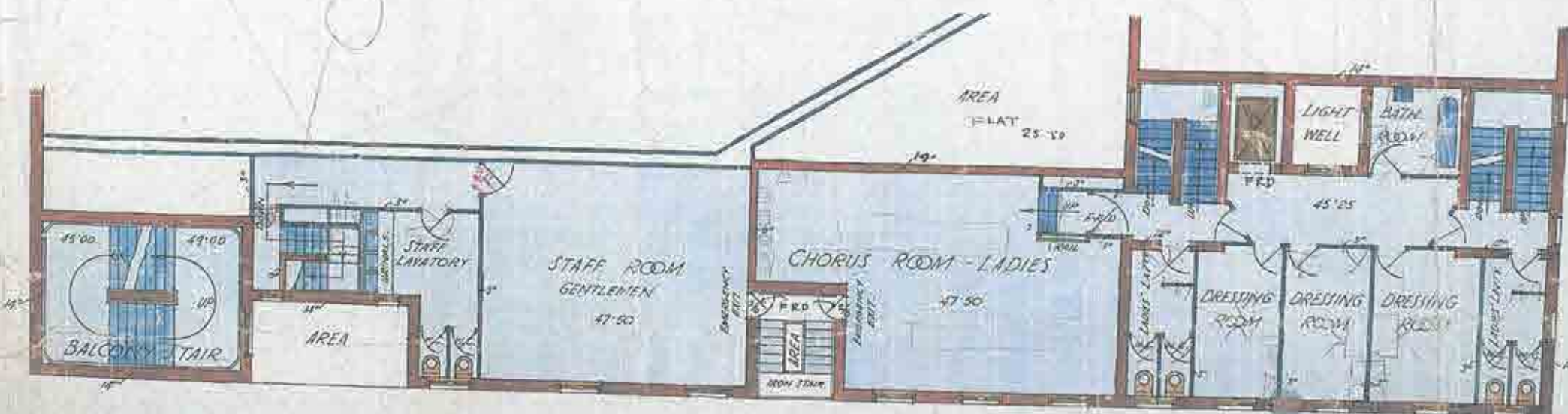
23



SCALE EIGHT FEET TO AN INCH



THIRD FLOOR DRESSING ROOMS ETC.



FIFTH FLOOR DRESSING ROOMS ETC.

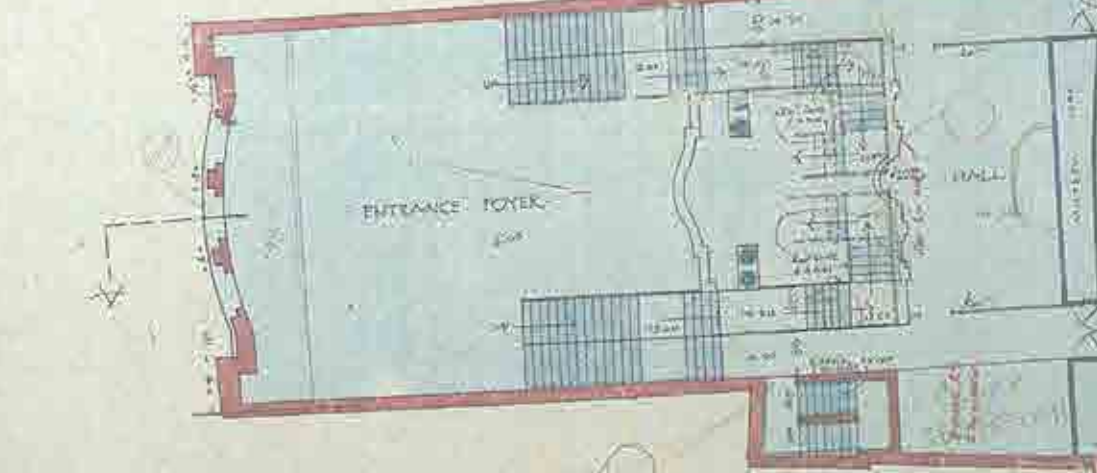
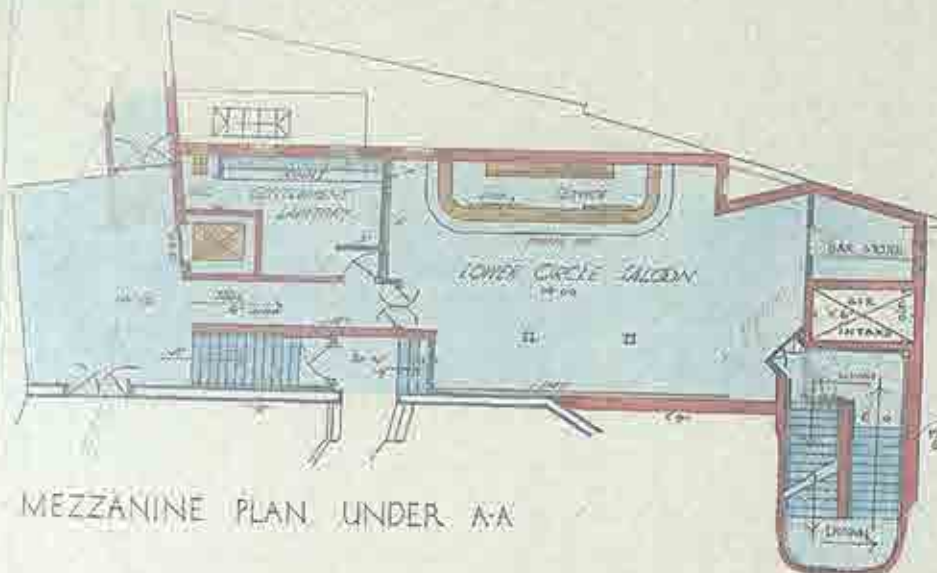
2322

2322

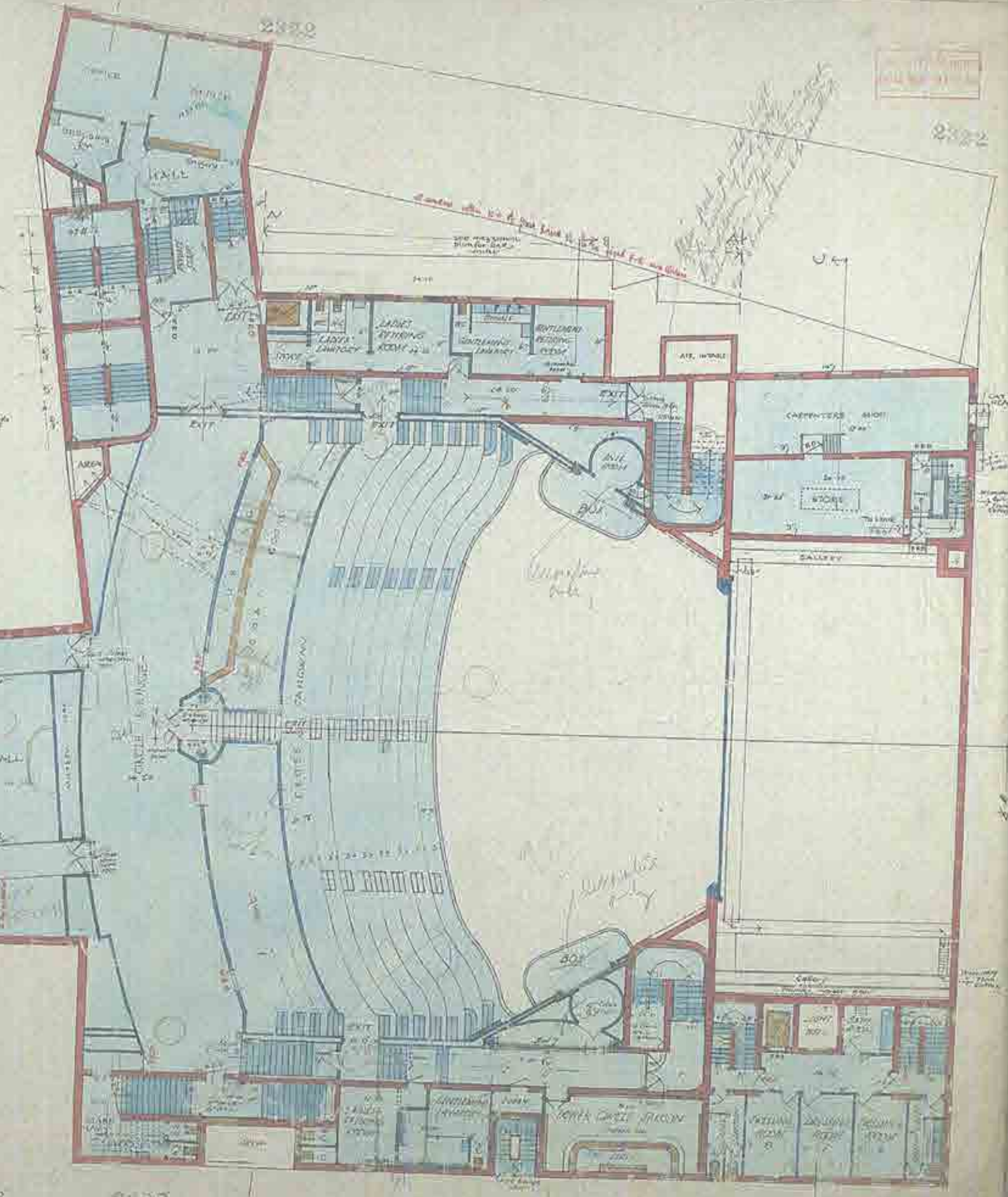
WALTER HILBURN, F.R.A.
ARCHITECTS & SURVEYORS
TOTTENHAM & LONDON
JANUARY 1922

DOMINION THEATRE

TOTTENHAM COURT ROAD



LOWER CIRCLE PLAN



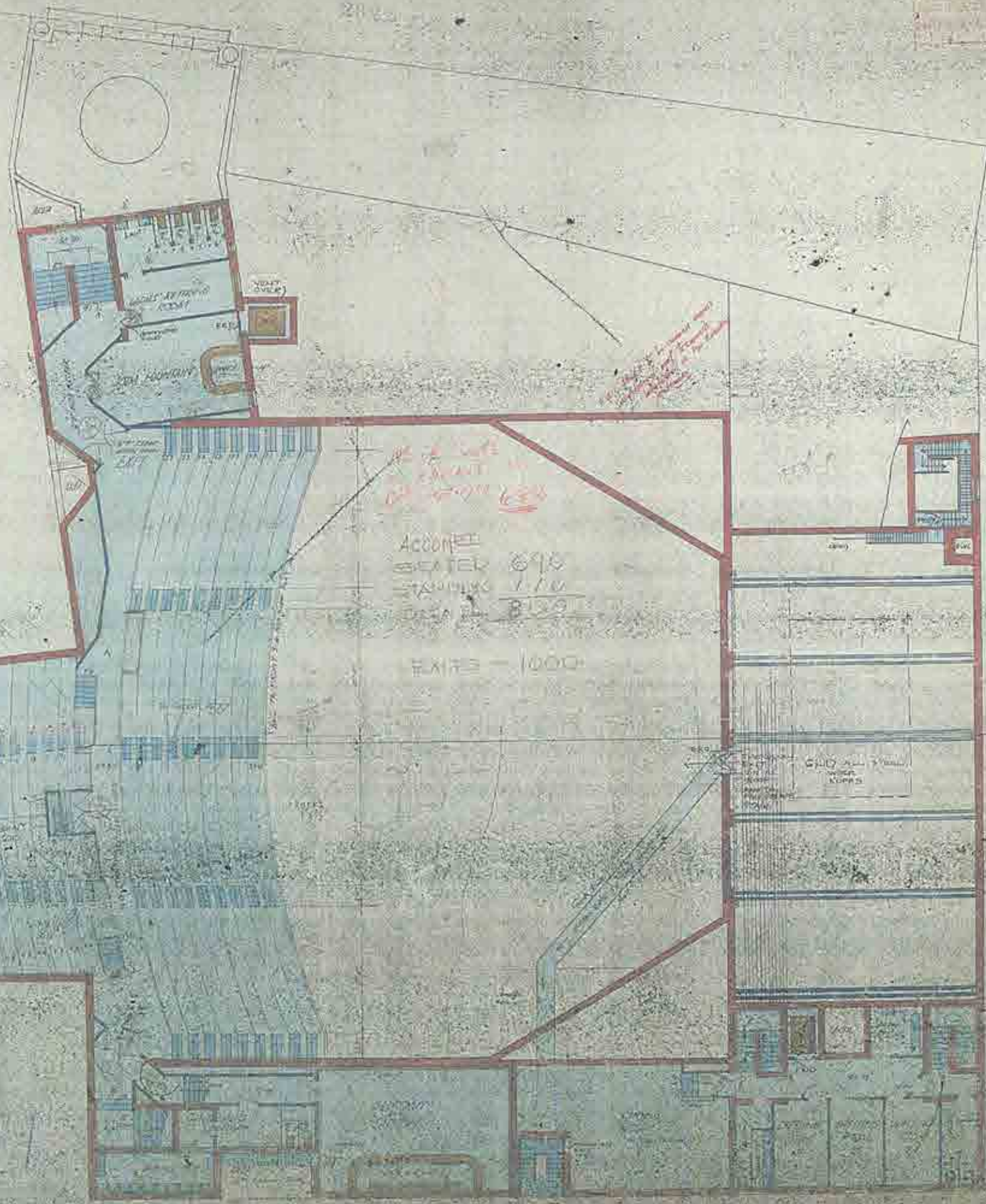
DOMINION THEATRE

TOTTENHAM COURT ROAD

2333



CENTRE EXIT UNDER BALCONY



NO. 2 CASE
FRONT
OF STAIR CASE

ACCUMULATED
SEATED 695
STANDING 110
TOTAL 805

EXITS - 1000

STAIR CASE
TO BALCONY
UNDER
BALCONY

BALCONY PLAN TO STAIR CASE

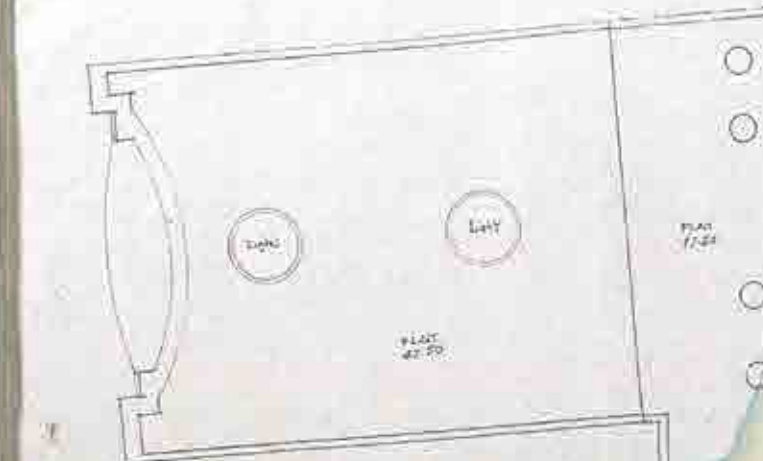
DOMINION THEATRE

TOTTENHAM COURT ROAD

2322

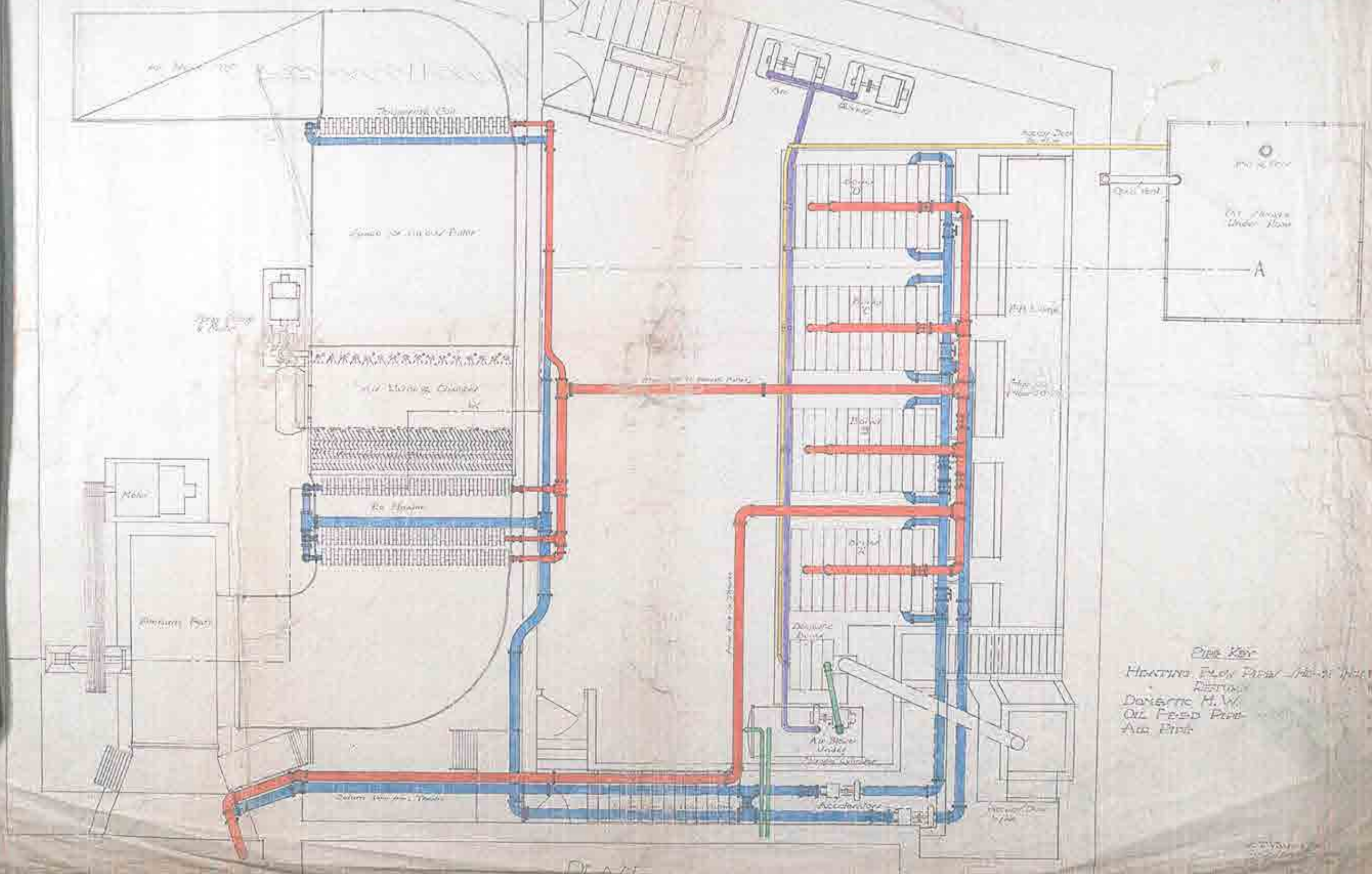
APPROVED

Approved



- DOMINION THEATRE -
 BOILER HOUSE AND FAN CHAMBER

- SCALE: 1/2" = 1 FOOT



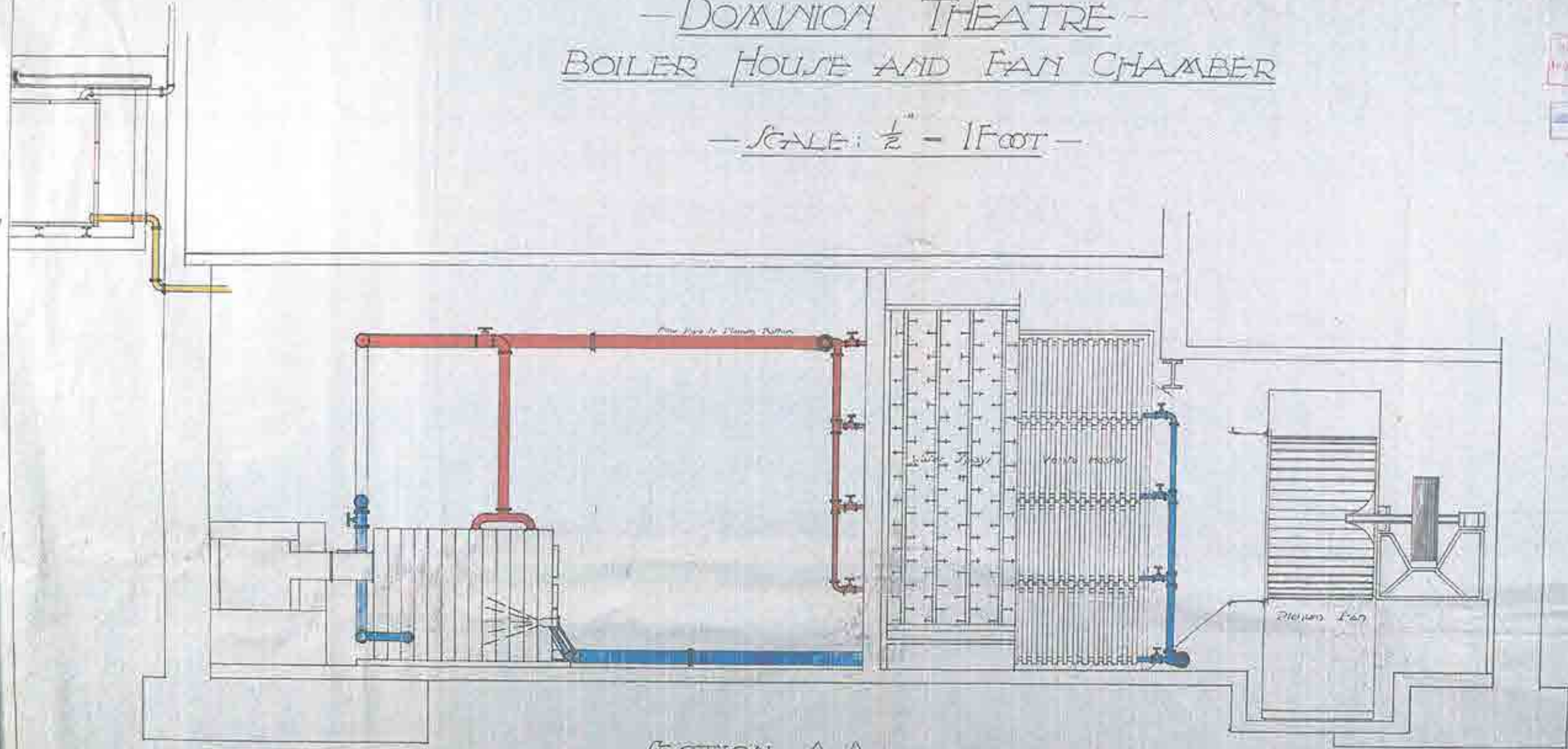
Pipe Key
 HEATING FLOW PIPE (Red)
 RETURN (Blue)
 DOMESTIC H.W. (Green)
 OIL FEED PIPE (Yellow)
 AIR PIPE (Grey)

SHEET NO. 11

- DOMINION THEATRE -
BOILER HOUSE AND FAN CHAMBER

- SCALE: 1/2" = 1 FOOT -

APPROVED
[Signature]



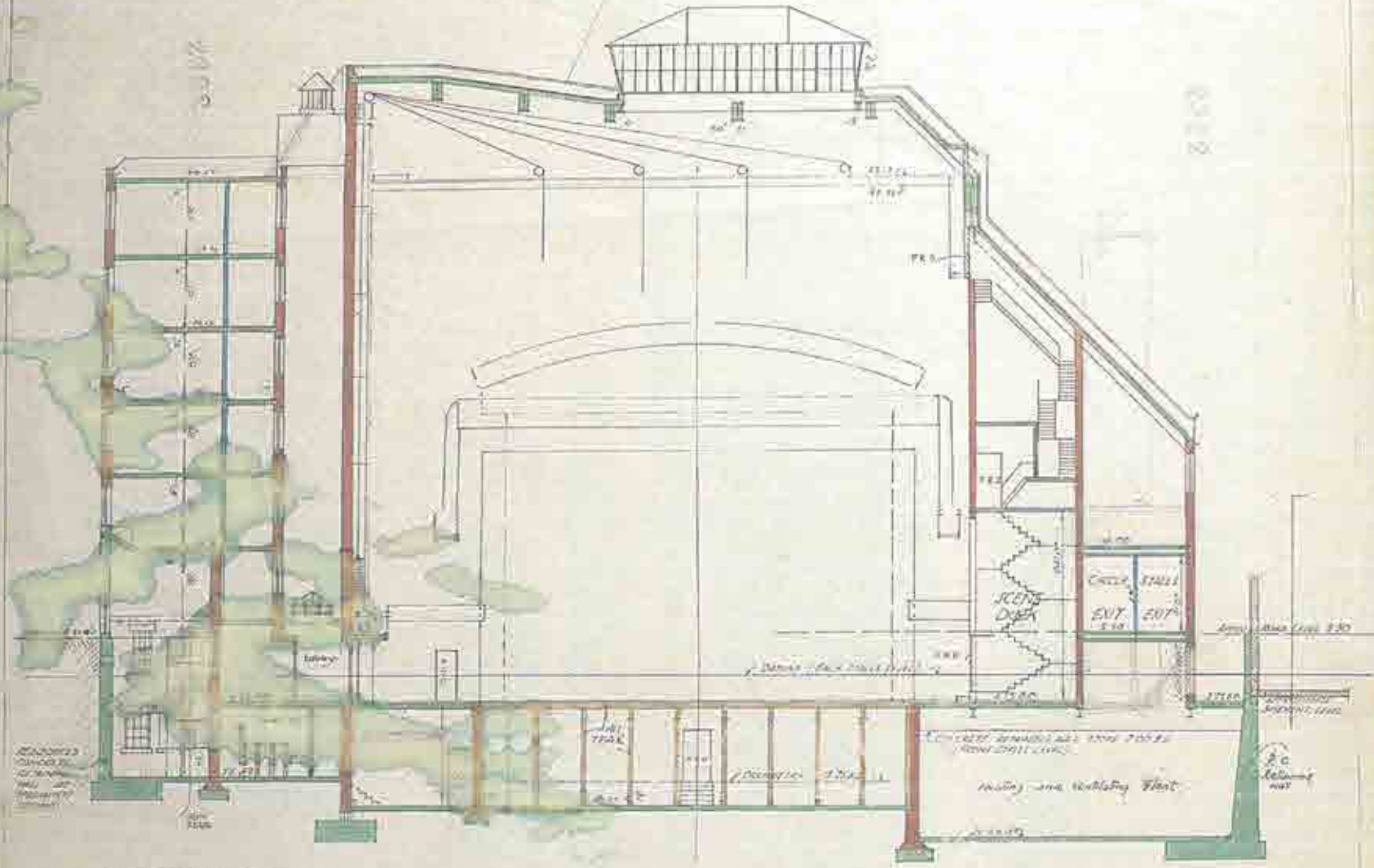
HEATING FLOW PIPES SHOWN THIS
RETURN
OIL FEED PIPE
AIR PIPES

SECTION A-A

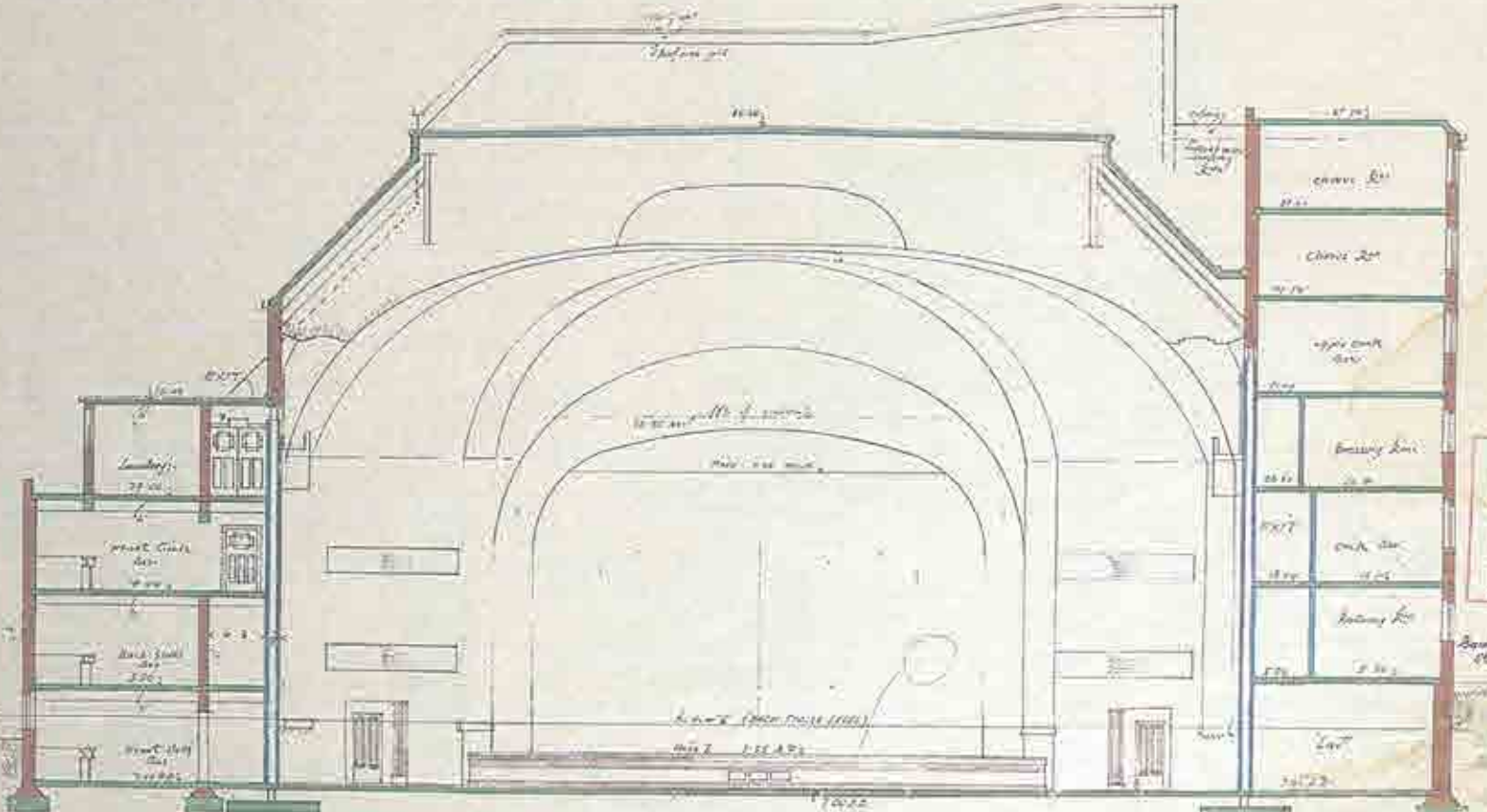
R.T. [Signature]
Consulting Engineer
12, Esplanade Street
Singapore

DOMINION THEATRE

TOTTENHAM COURT ROAD



SECTION C.C.



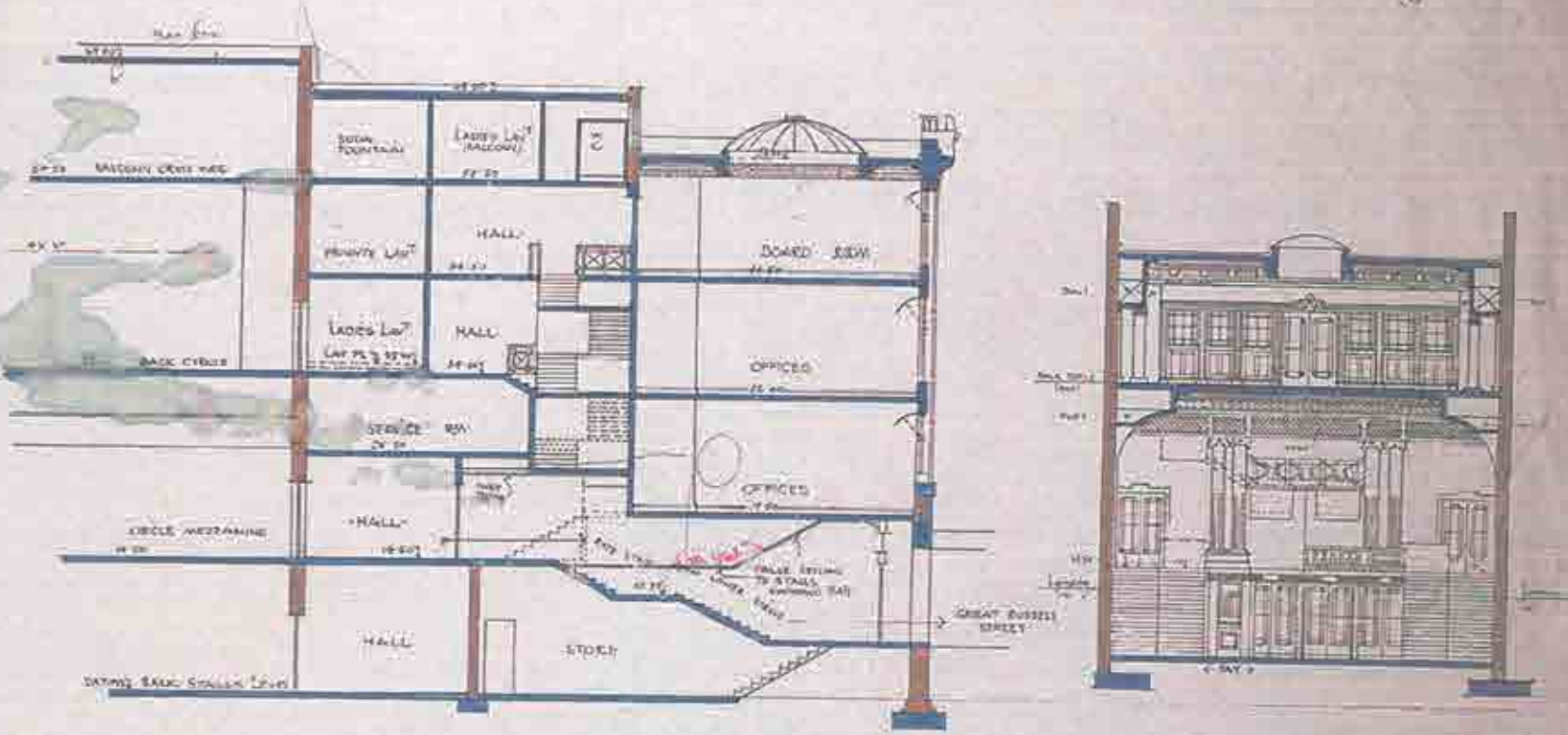
SECTION B-B.

W. J. MILBURN & PARTNERS
ARCHITECTS
SUNDERLAND & LONDON
JANUARY 1911

DOMINION THEATRE
TOTTENHAM COURT ROAD

2322

2322

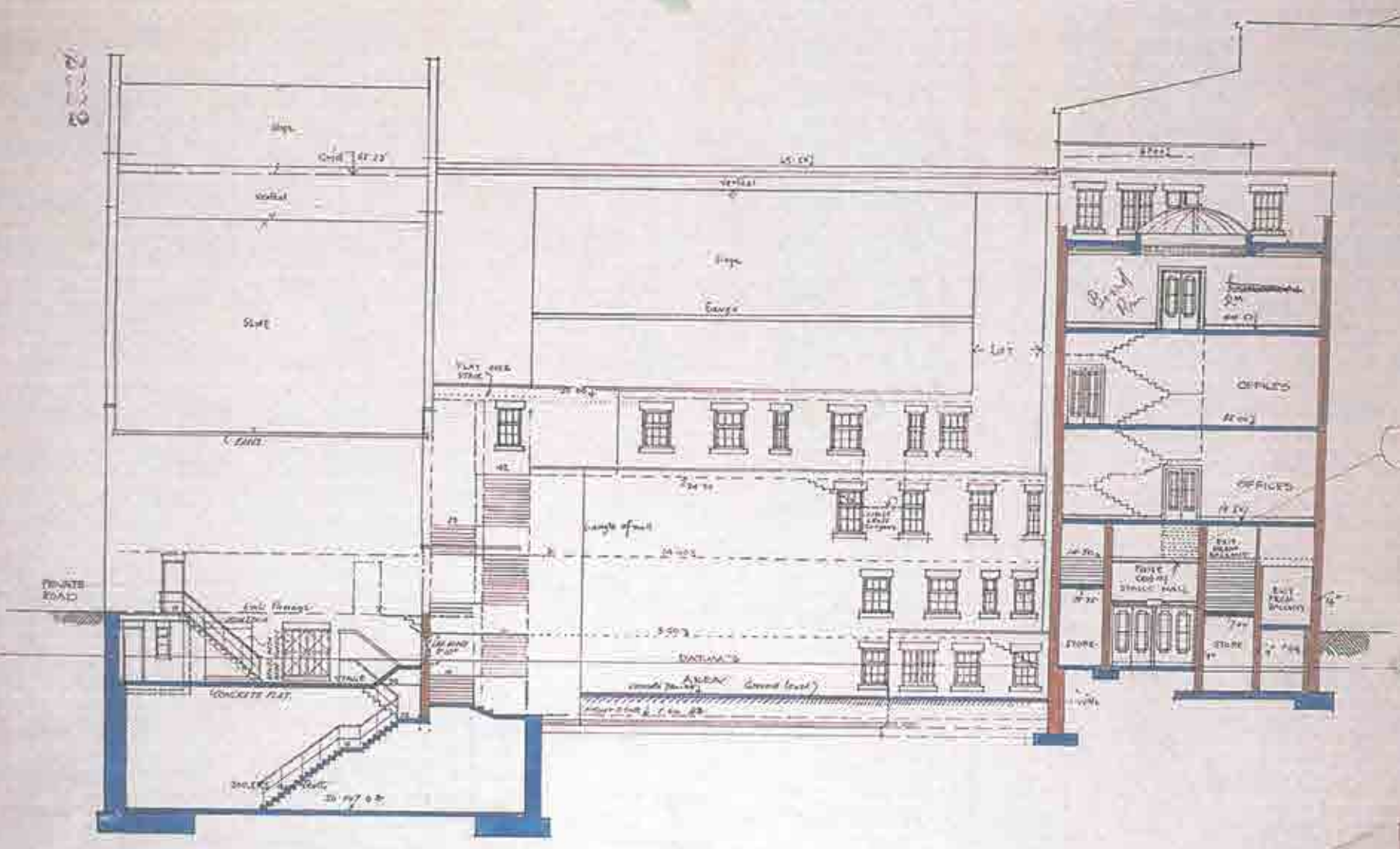


CROSS SECTION - RUSSELL ST FRONT

CROSS SECTION - ENTRANCE FLOOR

2322

2322



ELEVATION GREAT RUSSELL ST SIDE

2322

2322

11/27/21
2418-113-0111/11

