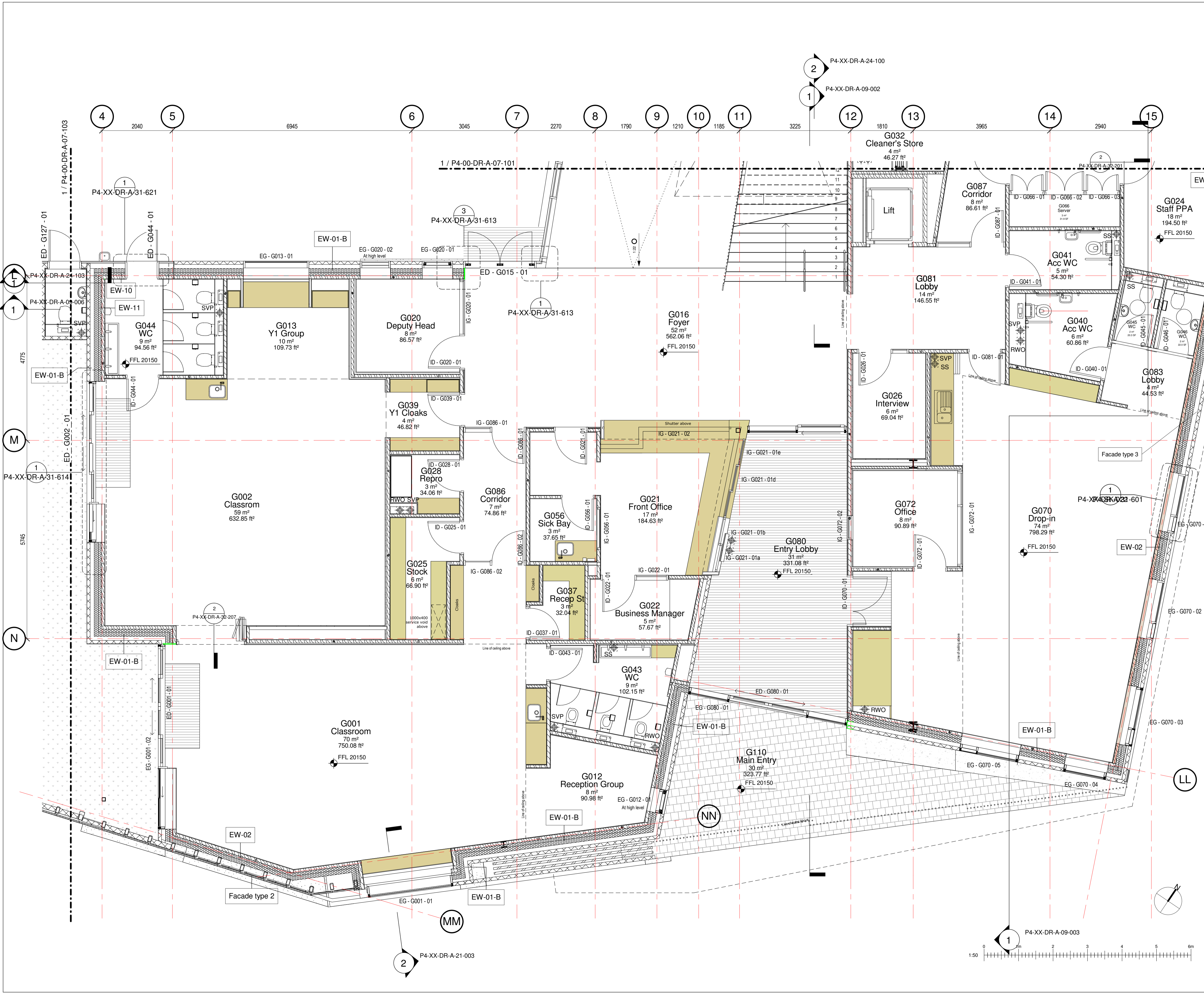


- SVP Soil vent pipe
- RWO Rain water outlet
- SS Stub stack



rev	description	drawn	checked	date
3	MLM model with secondary steels	ST	MB	05/07/18
2	Discharge Planning Condition 7	MB	NF	25/05/18
1	Internal walls updated. Construction Issue	TD	MB	18/05/18
11	Wall type revised. Metal profiles and trims key added.	GD	MB	10/04/18
General revisions				
10	General revisions made/H&Co comments added/ Public Health co-ordinated	ZC	MB	27/03/18
9	Minor amendments made, detail tags added and drainage coordinated	ZC	MB	09/03/18
8	Minor amendments & above ground drainage coordination	ZC	MB	13/02/18
7	Co-ordinated RWO and Public Health. General revisions made	ZC	MB	31/01/18
6	Amendments per Hco Comments (22/12/17)	ZC	MB	19/01/18
5	CAD issued for information	NS	NF	08/01/18
4	Wall Tags Added	ZC	NF	18/12/17
3	Amendments to allow CLT Coordination	ZC	MB	08/12/17
2	Amendments further to DLM 22/11/17. Door and window tags added. Issued for coordination	ZC	MB	01/12/17
1	Preliminary Issue	ZC	MB	16/11/17

status: CONSTRUCTION
 This drawing is protected under The Copyright, Designs and Patents Act 1988. Not scale. Figured dimensions only are to be taken from this drawing. All dimensions are to be checked on site before any work is put in hand. If in doubt, ASK.

P T A L

PETER TAYLOR ASSOCIATES LIMITED
 7 CURZON STREET
 MAYFAIR LONDON W1J 5HG

TELEPHONE +44 (0)20 7495 3837
 FACSIMILE +44 (0)20 7493 3475
 EMAIL MAYFAIR@PTAL.CO.UK
 WWW.PTAL.CO.UK

client: Neilcott Construction Group
 Excel House
 Cray Avenue
 Orpington
 Kent
 BR5 3ST



project: Central Somers Town
 Plot 4

title: GA Ground Floor Plan - Part 3

scale: 1 : 50 @ A1
 date: 16/11/17
 drawn: ZC
 checked: MB

Project ID: 170025
 Originator: PTA
 Drawing No: P4-00-DR-A-07-102
 revision: C3