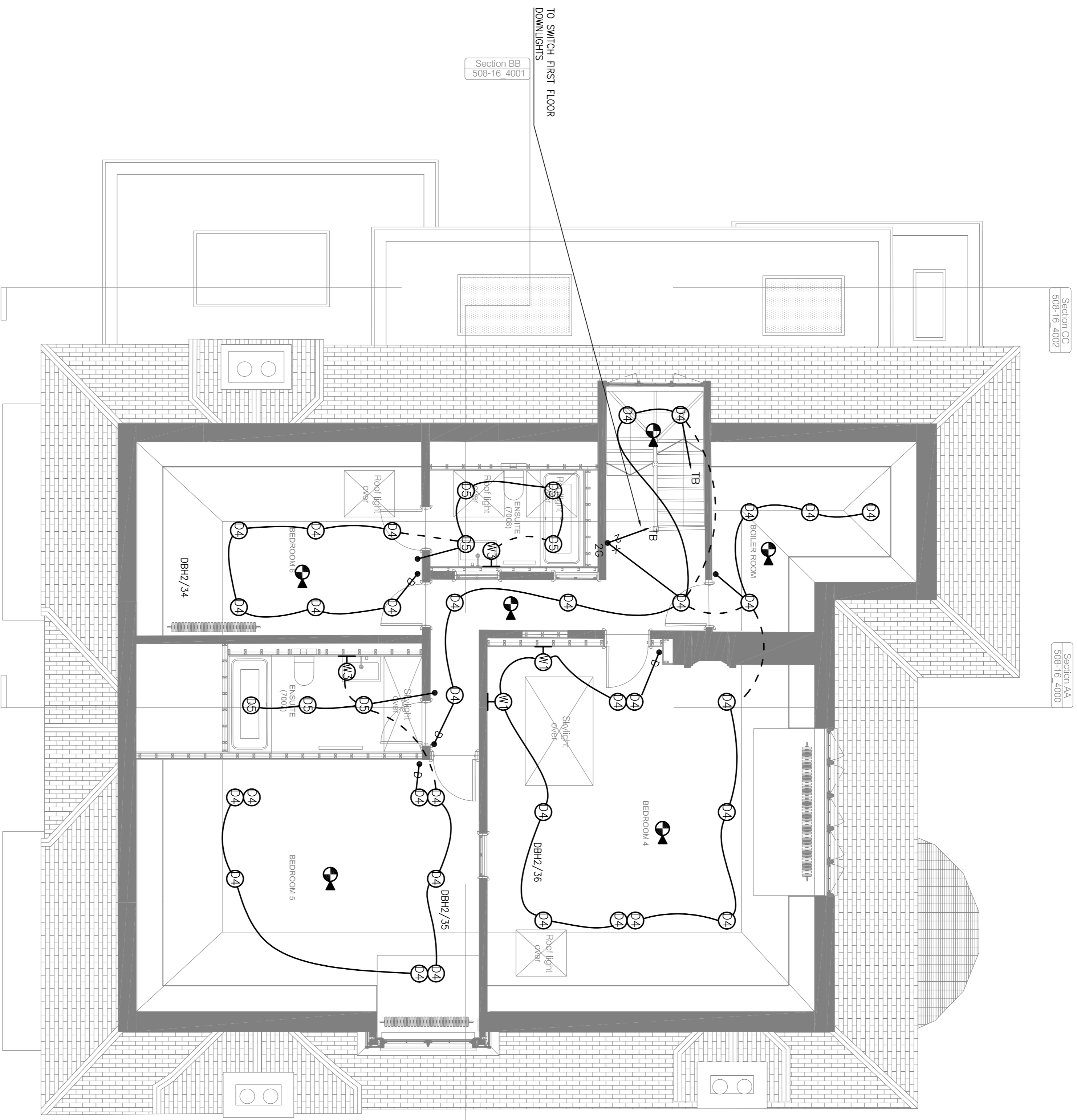


NOTES

THESE LAYOUTS ARE TO BE READ IN CONJUNCTION WITH ALL OTHER CONTRACT DOCUMENTS
 LV & EIV CABLES ARE TO BE KEPT AT LEAST 150mm APART AT ALL POINTS ALONG CABLE DISTRIBUTION ROUTES



ELECTRICAL AND MECHANICAL FITTINGS AND/OR APPLIANCES, CONDUITS, PIPES, CABLES, ETC. ARE INDICATED FOR TENDERING PURPOSES. GUIDANCE & COMPLETION OF INSTALLATION DRAWINGS, EXACT POSITIONS AND ROUTES SHALL BE SETTLED ON SITE IN RELATION TO OTHER SERVICES AND EXPOSURE AND TO THE ARCHITECT'S DETAILED SPECIFICATION AND DRAWINGS. THE ARCHITECT'S DETAILED SPECIFICATION AND DRAWINGS GIVEN (ON THE DRAWING OR IN THE SPECIFICATION) FINAL POSITIONS OF LIGHTING POINTS, MECHANICAL AND ELECTRICAL FITTINGS, FIXTURES AND/OR APPLIANCES MUST BE CHECKED WITH THE CONTRACT ADMINISTRATION BEFORE PROCEEDING.

REV.	DESCRIPTION	DATE	BY	CHECKED	APPROVED
PL3	REVISED PLANNING ISSUE	J.G.	M.W.	M.W.	
PL2	REVISED PLANNING ISSUE	SEPT'18/SEPT'18/SEPT'18	J.G.	M.W.	M.W.
PL1	INITIAL ISSUE (PLANNING)	FEB'18 FEB'18 FEB'18	J.G.	M.W.	M.W.
		JAN'18 JAN'18 JAN'18			

Edward Pearce
 CONSULTING ENGINEERS

Edward Pearce LLP
 Oakwood House
 35 Ewell Road
 Sunning, Surrey, KT6 6AF
 Tel: 020 8390 6244
 Fax: 020 8390 1329
 www.edwardpearce.com

THE ESTATE OFFICE

Project Site
 24 HEATH DRIVE
 LONDON
 NW3 7SB

Contract Title
**ELECTRICAL SERVICES
 SECOND FLOOR
 LIGHTING & FIRE ALARM**

Scale
 1:50 @ A1 FOR PLANNING
 Drawing No. 16/117-E10
 Revision
 PL3