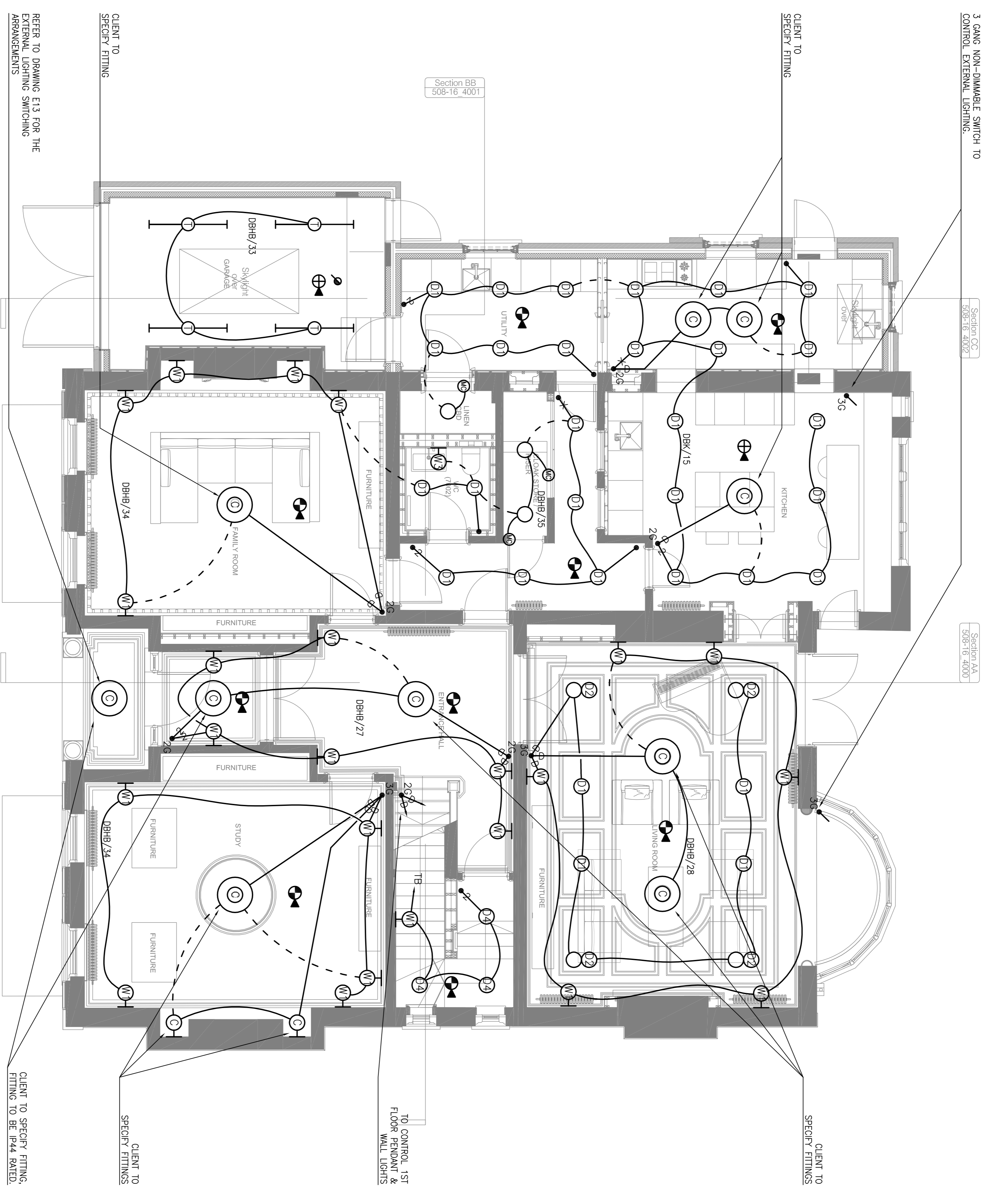


NOTES

THESE LAYOUTS ARE TO BE READ IN CONJUNCTION WITH ALL OTHER CONTRACT DOCUMENTS
 LV & EIV CABLES ARE TO BE KEPT AT LEAST 150mm APART AT ALL POINTS ALONG CABLE DISTRIBUTION ROUTES



REFER TO DRAWING E13 FOR THE EXTERNAL LIGHTING SWITCHING ARRANGEMENTS

CLIENT TO SPECIFY FITTING, FITTING TO BE IP44 RATED.

ELECTRICAL AND MECHANICAL FITTINGS AND/OR APPLIANCES, CONDUITS, PIPES, CABLES ETC. ARE INDICATED FOR TENDERING PURPOSES. GUIDANCE & COMPLETION OF INSTALLATION DRAWINGS, EXACT POSITIONS AND ROUTES SHALL BE SETTLED ON SITE IN RELATION TO OTHER SERVICES AND EXISTING AND PROPOSED ARCHITECT'S DETAILS AND FINISHES. THE ARCHITECT'S DETAILS SHALL BE THE FINAL POSITIONS OF LIGHTING POINTS. MECHANICAL AND ELECTRICAL FITTINGS, FIXTURES AND/OR APPLIANCES MUST BE CHECKED WITH THE CONTRACT ADMINISTRATION BEFORE PROCEEDING.

REV.	DESCRIPTION	DATE	BY	CHKD	APP'D
P1.3	REVISED PLANNING ISSUE	1/6	M.W.	M.W.	
P1.2	REVISED PLANNING ISSUE	SEPT'18/SEPT'18/SEPT'18	J.S.	M.W.	
P1.	INITIAL ISSUE (PLANNING)	FEB'18/FEB'18/FEB'18	J.C.	M.W.	
		JAN'18	JAN'18	JAN'18	

Edward Pearce
 CONSULTING ENGINEERS

Edward Pearce LLP
 Oak Square House
 35 Ewell Road
 Sutton, Surrey, KT6 6AF
 Tel: 020 8390 6244
 Fax: 020 8390 1329
 www.edwardpearce.com

THE ESTATE OFFICE

Project Title
 24 HEATH DRIVE
 LONDON
 NW3 7SB

Contract Title
 ELECTRICAL SERVICES
 GROUND FLOOR
 LIGHTING & FIRE ALARM

Scale	1:50 @ A1	Contract Status	FOR PLANNING
Drawing No.	16/117-E08	Revision	P1.3