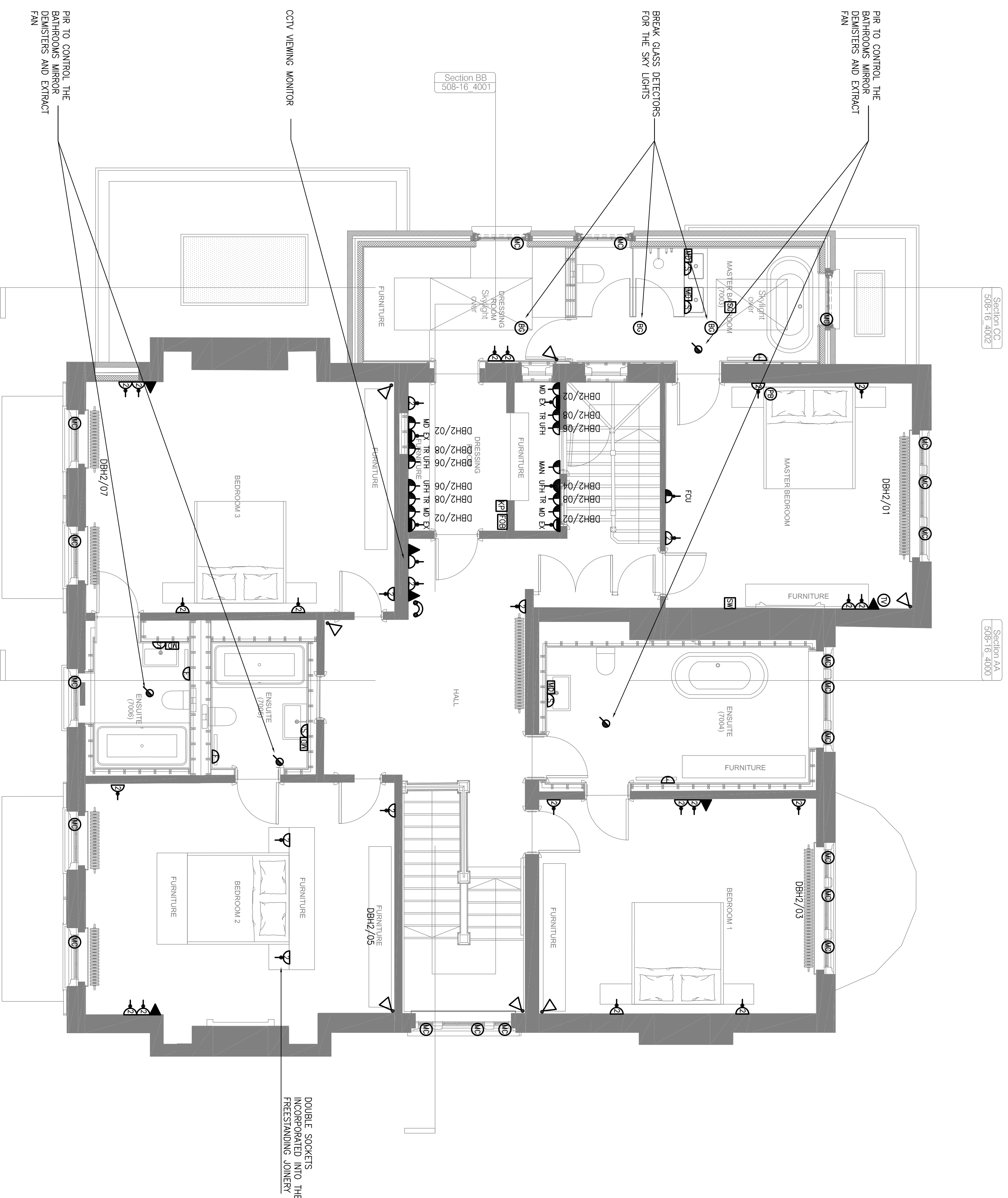


NOTES

THESE LAYOUTS ARE TO BE READ IN CONJUNCTION WITH ALL OTHER CONTRACT DOCUMENTS
 LV & EIV CABLES ARE TO BE KEPT AT LEAST 150mm APART AT ALL POINTS ALONG CABLE DISTRIBUTION ROUTES



TYPICAL DETAIL OF CONDUIT PROTECTION TO LOW LEVEL OUTLET SERVED FROM CEILING VOID ABOVE

ACCESSORRY - HEIGHT TO BE AGREED
 PLASTER FINISH
 20mm CONDUIT WITH BUSHED END
 BACK BOX FOR POWER SA CAT (ALL BACK BOXES min. 35mm)
 HOKEY STOCK WITH BUSHED END

TYPICAL DETAIL OF CONDUIT PROTECTION TO LOW LEVEL OUTLET SERVED FROM FLOOR VOID

ACCESSORRY - HEIGHT TO BE AGREED
 PLASTER FINISH
 BACK BOX FOR POWER SA CAT (ALL BACK BOXES min. 35mm)
 HOKEY STOCK WITH BUSHED END
 20mm STEEL CONDUIT

ELECTRICAL AND MECHANICAL FITTINGS AND/OR APPLIANCES, CONDUITS, PIPES, CABLES, ETC. ARE INDICATED FOR TENDERING PURPOSES. GUIDANCE & COMPLETION OF INSTALLATION DRAWINGS, EXACT POSITIONS AND ROUTES SHALL BE SETTLED ON SITE IN RELATION TO OTHER SERVICES AND FIXTURES AND TO THE ARCHITECT'S DETAILED DRAWINGS AND SPECIFICATIONS. THE ARCHITECT'S DETAILED DRAWINGS AND SPECIFICATIONS SHALL TAKE PRECEDENCE OVER THE INFORMATION GIVEN (ON THE DRAWING OR IN THE SPECIFICATION) FINAL POSITIONS OF LIGHTING POINTS, MECHANICAL AND ELECTRICAL FITTINGS, FIXTURES AND/OR APPLIANCES MUST BE CHECKED WITH THE CONTRACT ADMINISTRATION BEFORE PROCEEDING.

REV.	DESCRIPTION	DATE	BY	CHECKED	APPROVED
PL3	REVISED PLANNING ISSUE	J.G.	M.W.	M.W.	
PL2	REVISED PLANNING ISSUE	SEPT'18/SEPT'18	J.G.	M.W.	M.W.
PL1	INITIAL ISSUE (PLANNING)	FEB'18	FEB'18	FEB'18	
		J.G.	M.W.	M.W.	
		JAN'18	JAN'18	JAN'18	

Edward Pearce
 CONSULTING ENGINEERS

Edward Pearce LLP
 Oldfield House
 35 Ewell Road
 Sutton, Surrey KT6 6AF

Tel: 020 8390 6244
 Fax: 020 8390 1379
 www.edwardpearce.com

THE ESTATE OFFICE

24 HEATH DRIVE
 LONDON
 NW3 7SB

Project Title: **ELECTRICAL SERVICES FIRST FLOOR SMALL POWER & ANCILLARIES**

Scale: 1:50 @ A1 FOR PLANNING

Drawing No: 16/117-E05

Revision: PL3