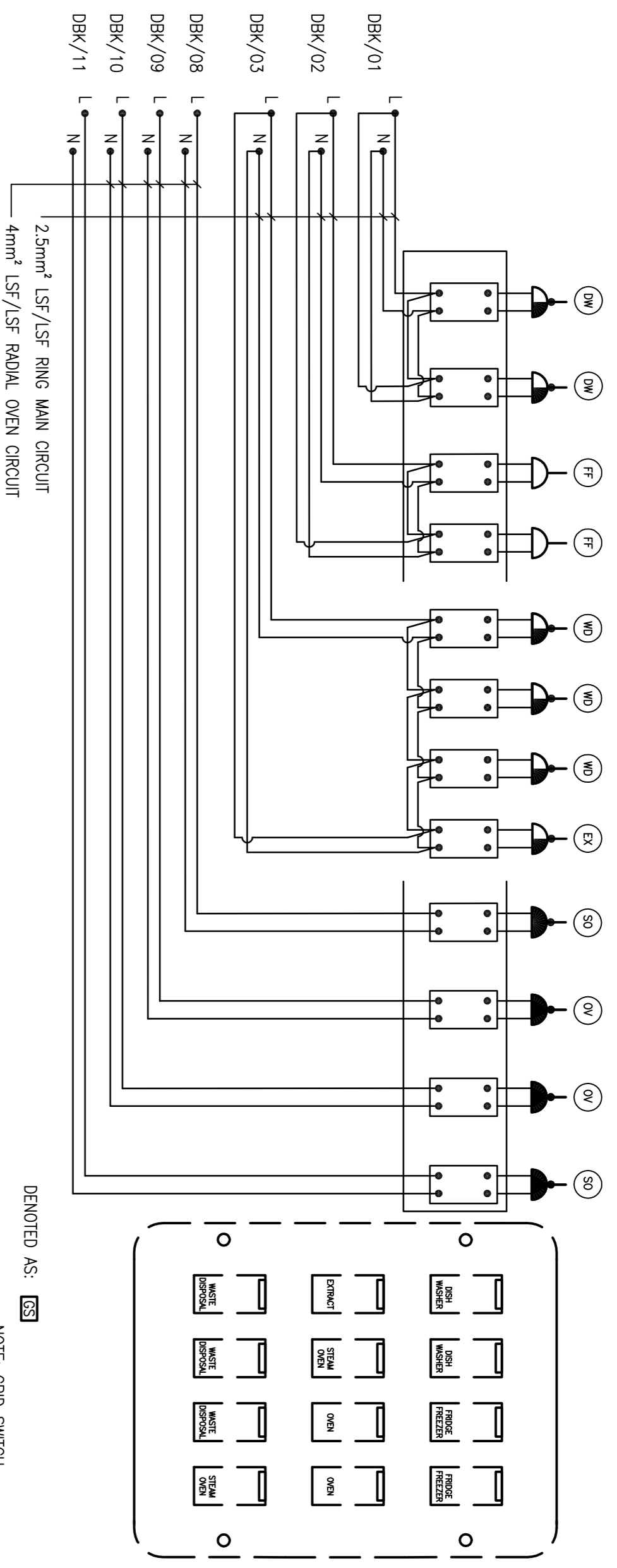


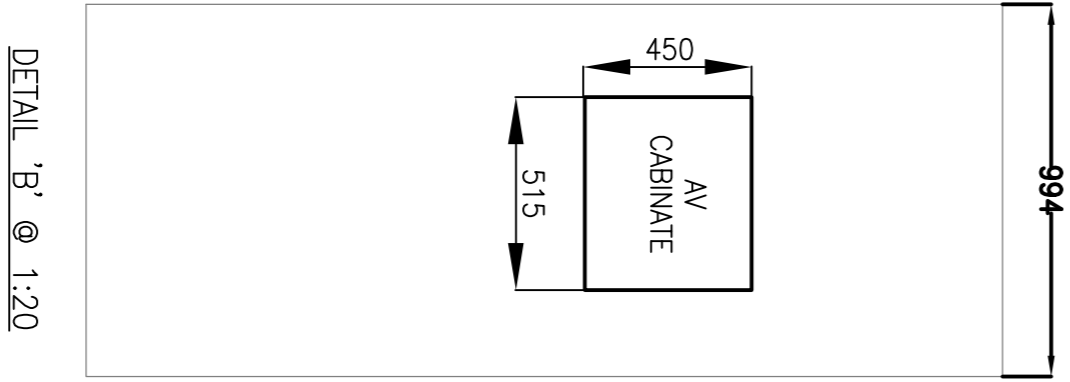
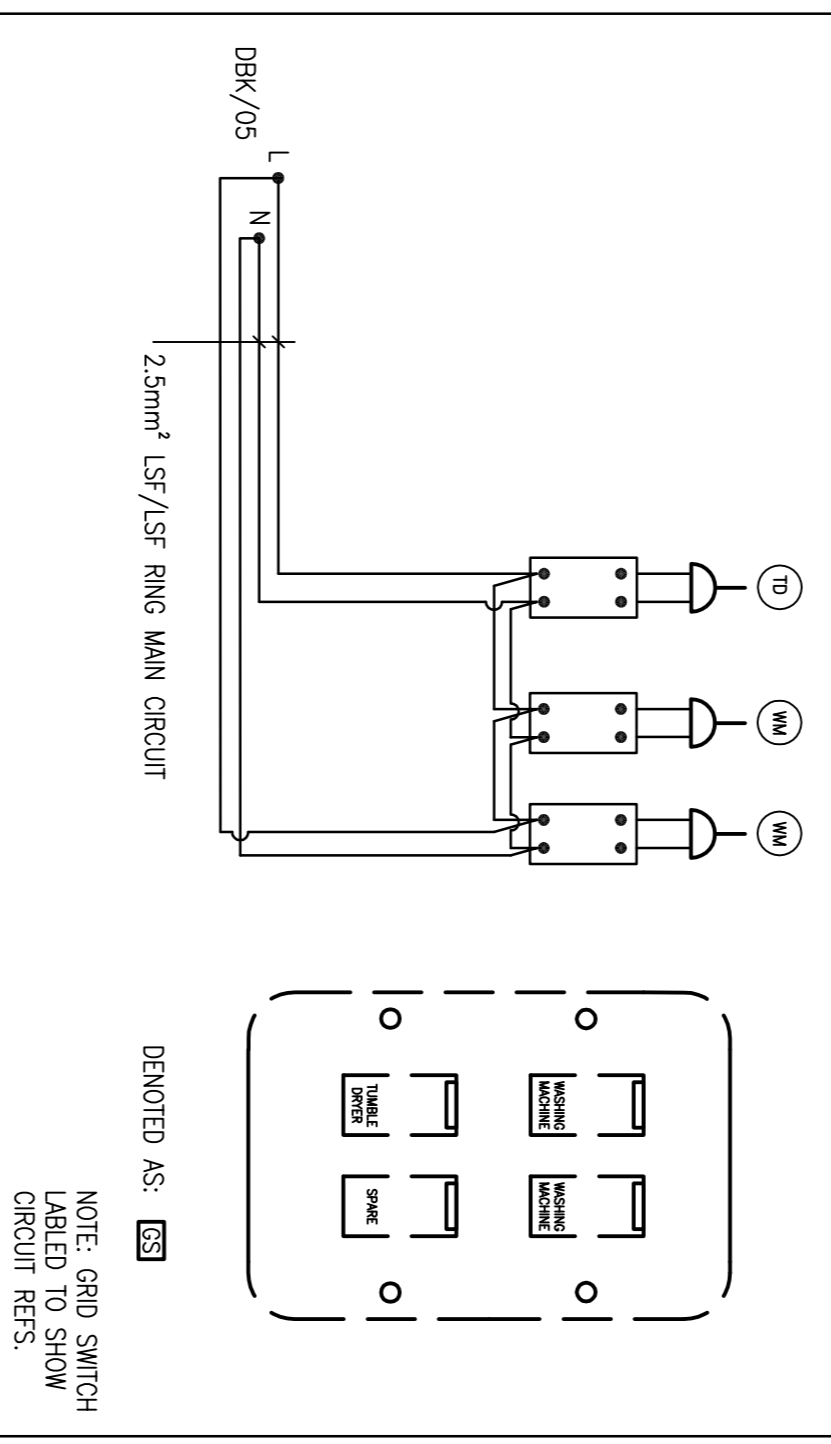
NOTES

THESE LAYOUTS ARE TO BE READ IN CONJUNCTION WITH ALL OTHER CONTRACT DOCUMENTS
 LV & EIV CABLES ARE TO BE KEPT AT LEAST 150mm APART AT ALL POINTS ALONG CABLE DISTRIBUTION ROUTES

DETAIL A:
 10 GANG 20A D.P. GRID SWITCH FOR KITCHEN APPLIANCE SWITCHING

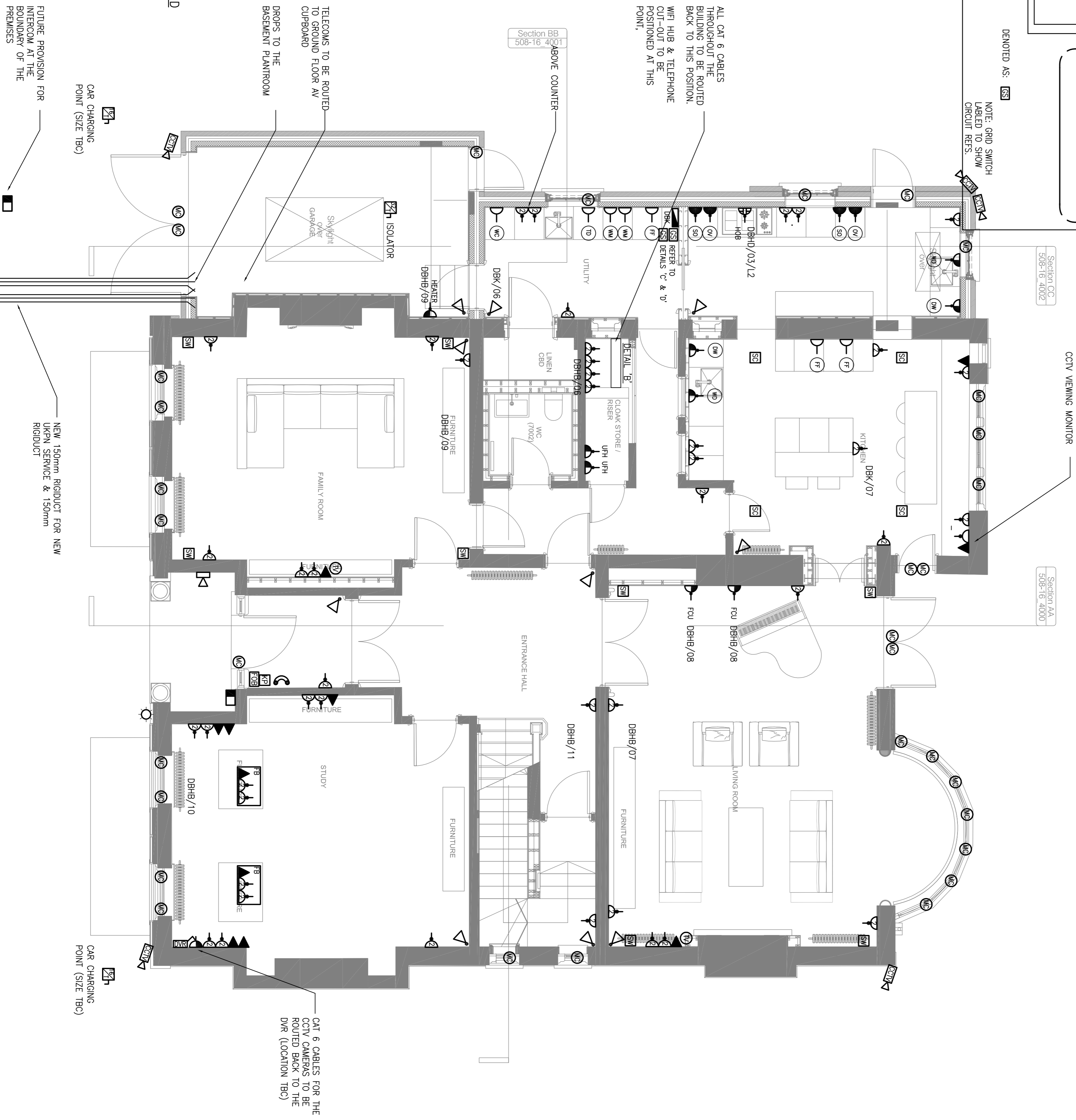


DETAIL D:
 4 GANG 20A D.P. GRID SWITCH FOR KITCHEN APPLIANCE SWITCHING



TYPICAL DETAIL OF CONDUIT PROTECTION TO LOW LEVEL OUTLET SERVED FROM CEILING VOID ABOVE:
 PLASTER FINISH
 BACK BOX FOR 5E OR TV CAT (ALL BACK BOXES BE PREPARED) (min. 35mm)
 20mm CONDUIT WITH BUSHED END
 CEILING VOID
 ACCESSORY- (ALL BACK BOXES BE PREPARED)
 PLASTER FINISH
 20mm STEEL CONDUIT WITH BUSHED END
 HOCKEY STICK
 POWER SA CAT (5E OR TV) (ALL BACK BOXES BE PREPARED) (min. 35mm)
 BACK BOX FOR 5E OR TV CAT (ALL BACK BOXES BE PREPARED)
 ACCESSORY- (ALL BACK BOXES BE PREPARED)
 PLASTER FINISH
 FLOOR/CEILING VOID
TYPICAL DETAIL OF CONDUIT PROTECTION TO LOW LEVEL OUTLET SERVED FROM FLOOR VOID

ELECTRICAL AND MECHANICAL FITTINGS AND/OR APPLIANCES, CONDUITS, PIPES, CABLES ETC. ARE INDICATED FOR TENDERING PURPOSES. GUIDANCE & COMPLETION OF INSTALLATION DRAWINGS, EXACT POSITIONS AND ROUTES SHALL BE SETTLED ON SITE IN RELATION TO OTHER SERVICES AND EXISTING AND PROPOSED STRUCTURE. THE ARCHITECT'S DETAILS GIVEN (ON THE DRAWING OR IN THE SPECIFICATION) FINAL POSITIONS OF LIGHTING POINTS, MECHANICAL AND ELECTRICAL FITTINGS, FIXTURES AND/OR APPLIANCES MUST BE CHECKED WITH THE CONTRACT ADMINISTRATION BEFORE PROCEEDING.



CAT 6 CABLES FOR THE CCTV CAMERAS TO BE ROUTED BACK TO THE DVR (LOCATION TBC)

CAR CHARGING POINT (SIZE TBC)

NEW 150mm RIGIDUCT FOR NEW URN SERVICE & 150mm RIGIDUCT

REV.	DESCRIPTION	DATE	BY	CHKD	APP'D
PL3	REVISED PLANNING ISSUE	1/6	M.W.	M.W.	
PL2	REVISED PLANNING ISSUE	SEPT'18/SEPT'18/SEPT'18	J.S.	M.W.	
PL1	INITIAL ISSUE (PLANNING)	FEB'18 FEB'18 FEB'18	J.S.	M.W.	
		JAN'18 JAN'18 JAN'18	J.S.	M.W.	

Edward Pearce
 CONSULTING ENGINEERS
 Edward Pearce LLP
 Oakwood House
 35 Ewell Road
 Sutton, Surrey KT6 6AF
 Tel: 020 8390 6244
 Fax: 020 8390 1329
 www.edwardpearce.com

THE ESTATE OFFICE
 24 HEATH DRIVE
 LONDON
 NW3 7SB

Electrical Services
 GROUND FLOOR
 SMALL POWER & ANCILLARIES

Scale: 1:50 @ A1 FOR PLANNING

Drawing No: 16/117-E04

Revision: PL3