

22 FROGNAL WAY

RETAINING WALL AMENDMENTS SEPTEMBER 2018

DESIGN SUMMARY

R A N D L E S I D D E L E Y

LANDSCAPE ARCHITECTURE & CONSTRUCTION

KITCHEN COURTYARD DESIGN DEVELOPMENT

RETAINING WALL = 2 TERRACES / CANTILEVERED CONCRETE STAIRS



PROPOSED RETAINING WALL TERRACES



CANTILEVERED STAIR PRECEDENT



LIVING WALL PRECEDENT

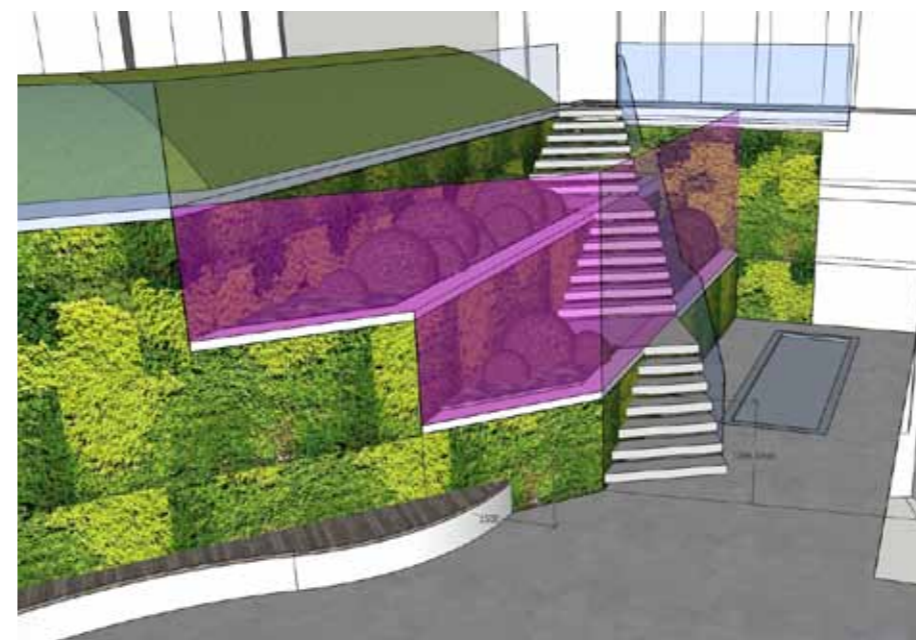
SUMMARY

The design of the kitchen courtyard has been revisited following project team and client discussions and testing the existing root structure of the protected trees. It was felt more could be done to create a better space than was first imagined.

The original scheme sought to bring light into the space but was heavily restricted by the root protection zone, which guarded the Lime and Beech tree's subterranean structure. Trial pits were dug around this area of expansion to provide an extensive analysis of the ground conditions and roots, carried out by the appointed Arboriculturalist. This provided a clearer picture of the extent of roots and how the previous development had prevented them spreading extensively to the south, with disruptive ground works.

This presented the opportunity to push the pile wall back, step the retaining wall into a series of terraces, and allow more light into the space and residence. This also provided a passive fire route out, connecting with the north garden. A number of options were tabled and it was agreed that having two terraces allowed for more planting width and interest per terrace, whilst maintaining a good spatial relationship with the building, roof light and stairs.

By cantilevering the step units from the retaining walls, the structure seems lighter. The singular glass balustrade also seems to float up out of the space, providing a clear line of egress in an emergency, where occupants can quickly move away from the building but also use it on a daily basis to access the garden. Shade tolerant planting will accentuate the terraces and living green walls and climbers will shroud the structural elements.



ORIGINAL POSITION OF PILE WALL (PINK) COMPARED TO AMENDMENT



PROPOSED PLAN