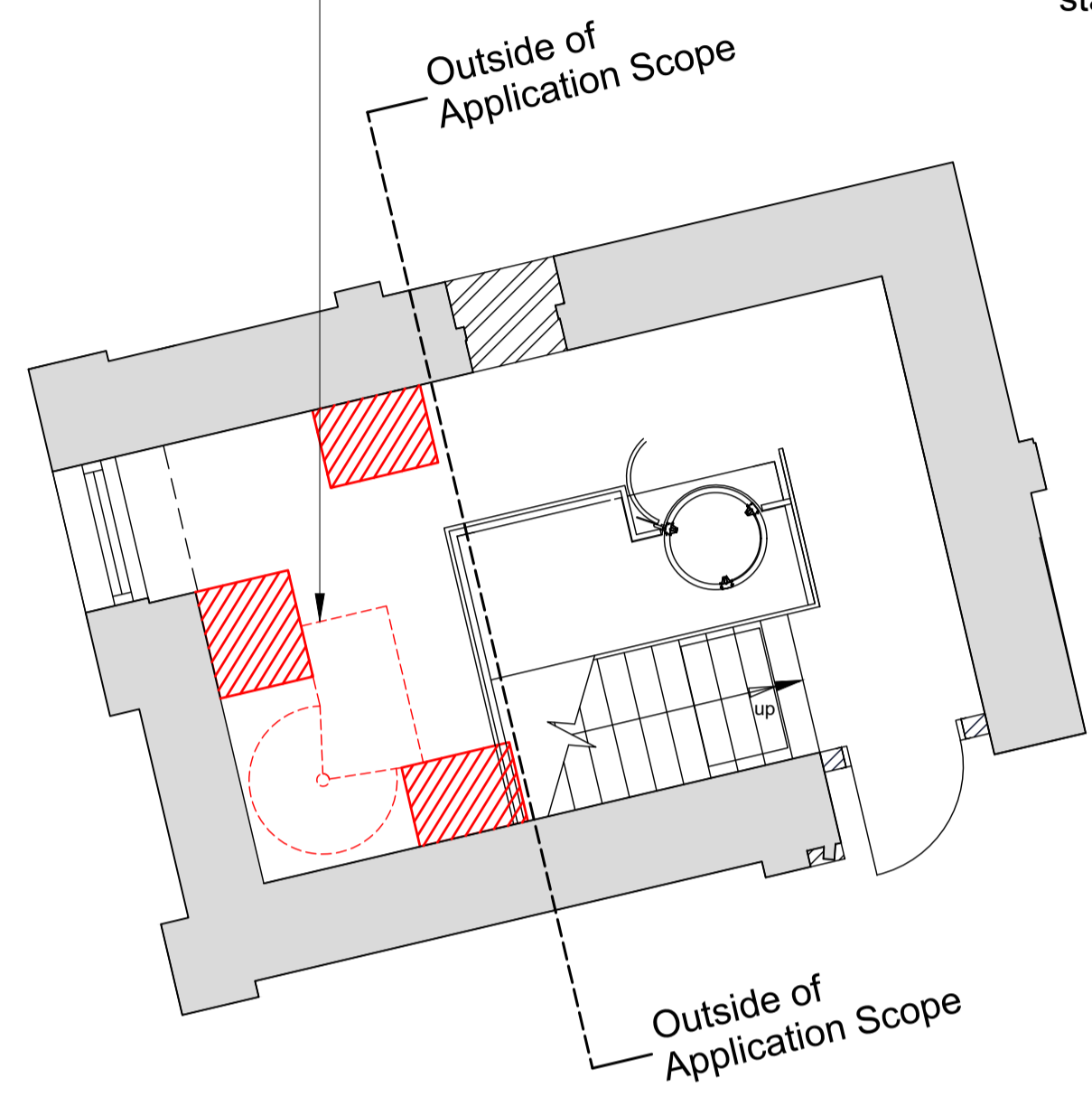
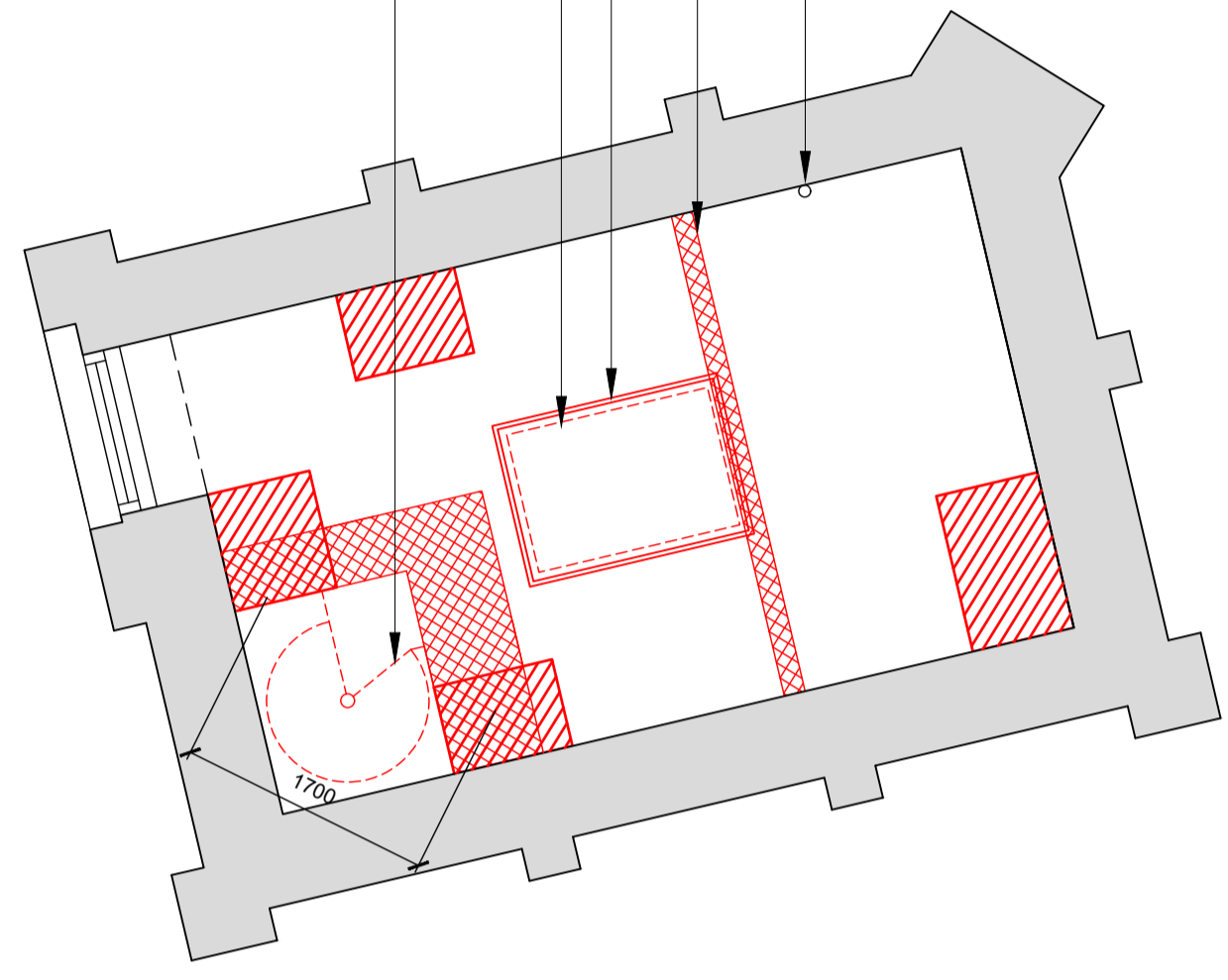


Existing metal platform and spiral staircase removed



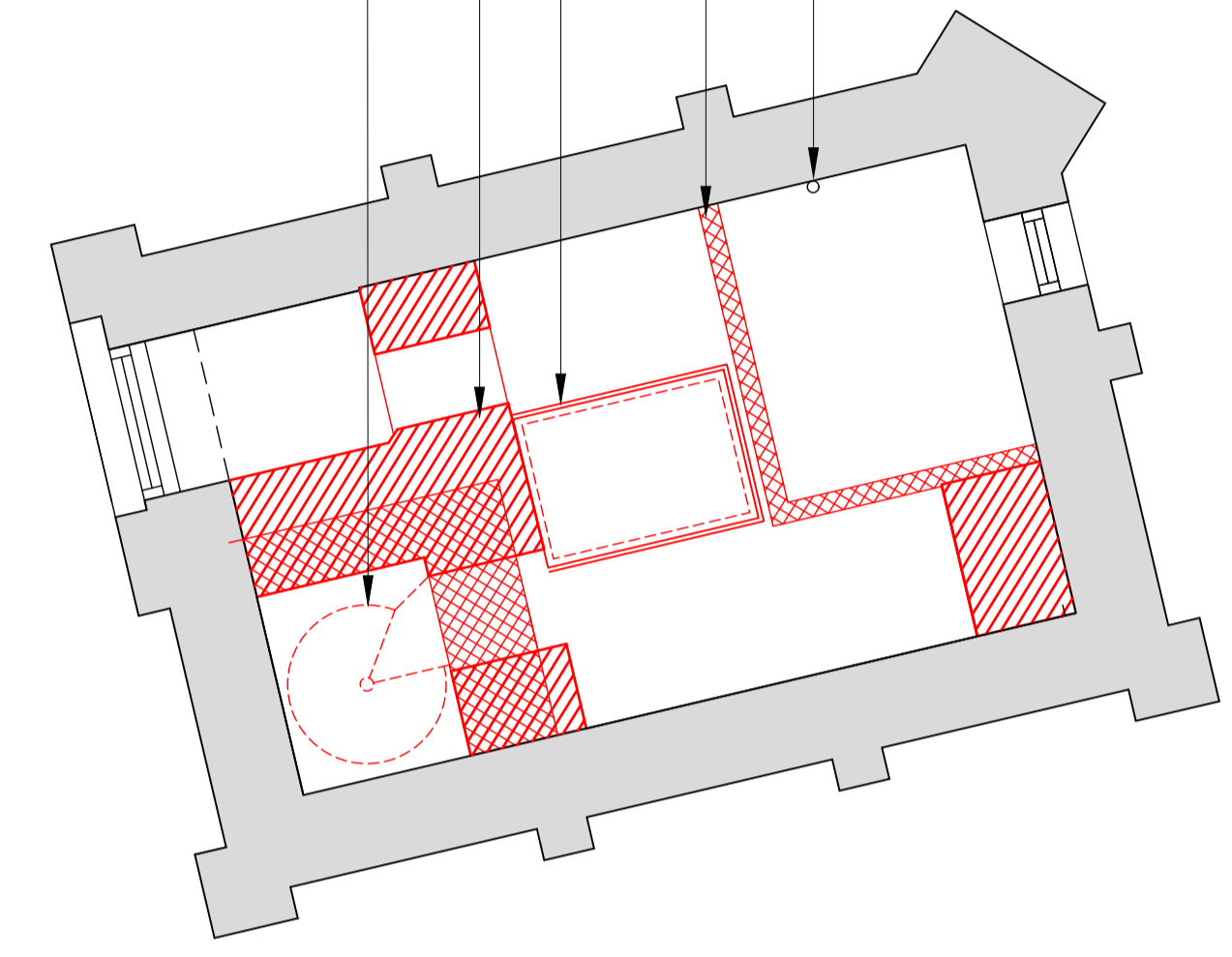
1 - SECOND FLOOR PLAN

Existing drainpipe retained
Existing floor upstand removed
Balustrade removed
Central void infilled as per BFS_THA_PR_AL_814
Existing metal spiral staircase removed



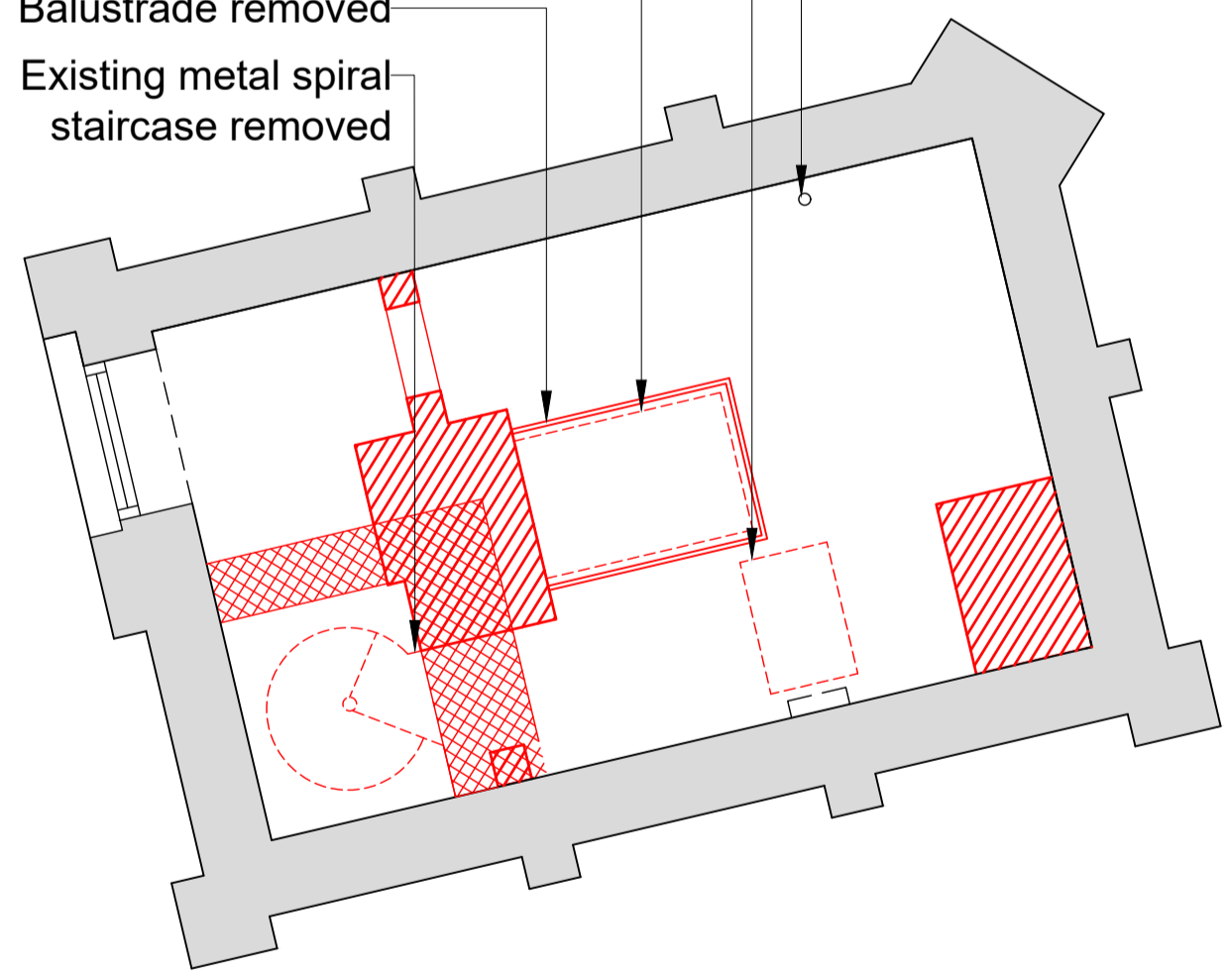
2 - THIRD FLOOR PLAN

Existing drainpipe retained
Floor upstand removed
Balustrade removed
Central void infilled as per BFS_THA_PR_AL_814
Existing metal spiral staircase removed



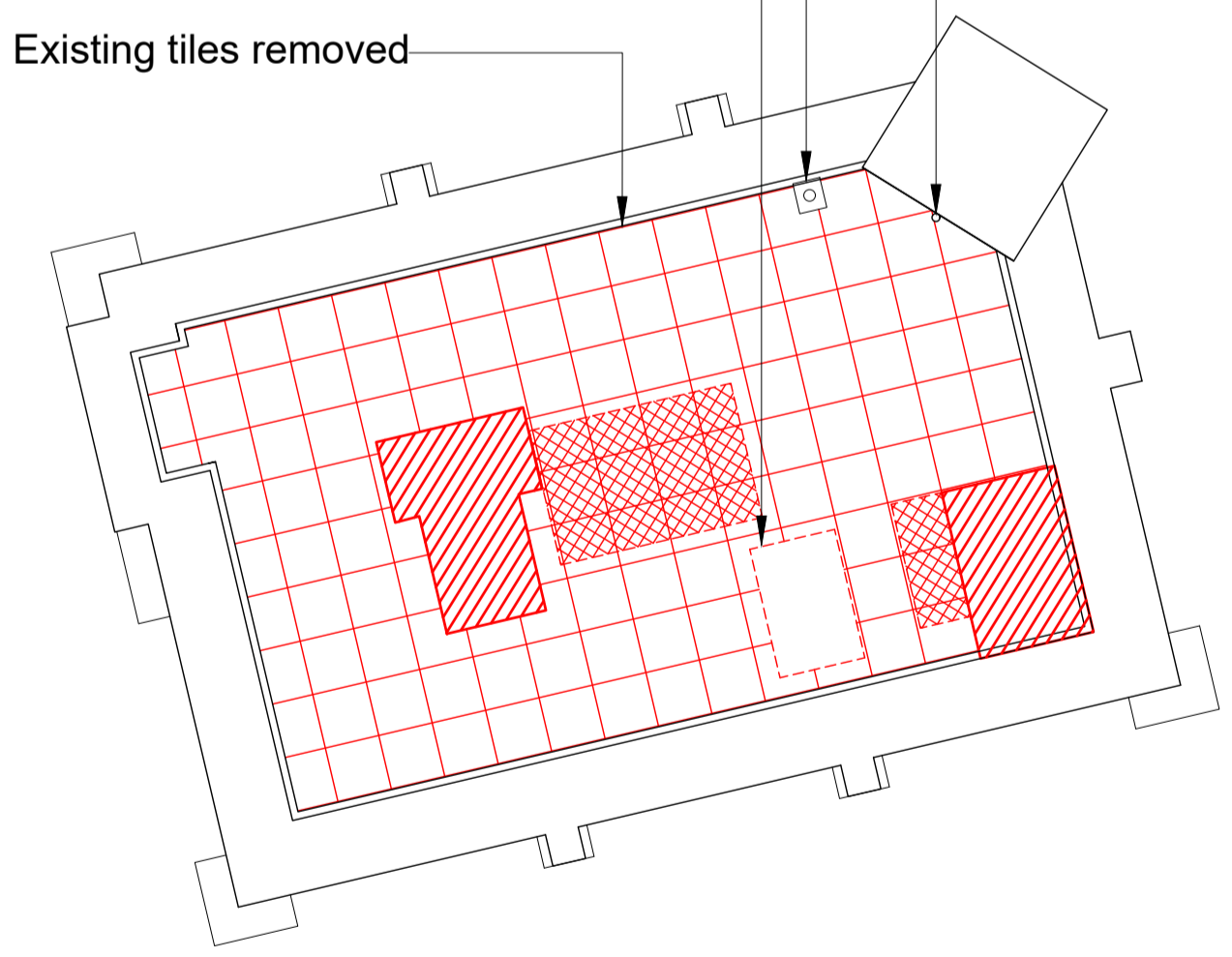
3 - FOURTH FLOOR PLAN

Existing drainpipe retained
Access hatch above removed
Central void infilled as per BFS_THA_PR_AL_814
Balustrade removed
Existing metal spiral staircase removed



4 - FIFTH FLOOR PLAN

Existing flagpole retained
Existing drainpipe retained
Access hatch removed
Existing tiles removed



5 - ROOF TERRACE



Revisions					Revisions						
Rev	Date	By	Description	Checked	Approved	Rev	Date	By	Description	Checked	Approved
P1	24.07.18	RB	Statutory Approvals	JM	RH						

KEY
 WALLS REMOVED
 FLOOR REMOVED
 BALUSTRADE REMOVED
 STAIR/HATCH REMOVED

A1

North ↑	Client: Tate Harmer	Unit G182, Stamford Works, 3 Gilt Street, London N16 8JH Tel: +44 (0)207 241 7481 Email: studio@tateharmer.com	Do not scale. All dimensions to be checked on site. This drawing is copyright.
	Client: Platinum Land	8 Overgate House, 1 Duke of York Square, Kings Road, London, SW3 4LY	
	Project: Belsize Park Firestation	Date of Origin: 28.11.17	Drawn By: ABF
	Drawing Title: Tower Unit Demolition Plans	Scale: 1:50 @A1	
Client Sign Off	Drawing Number: BFS_THA_DM_AL_130_P1	Revision	Drawing Status: Planning