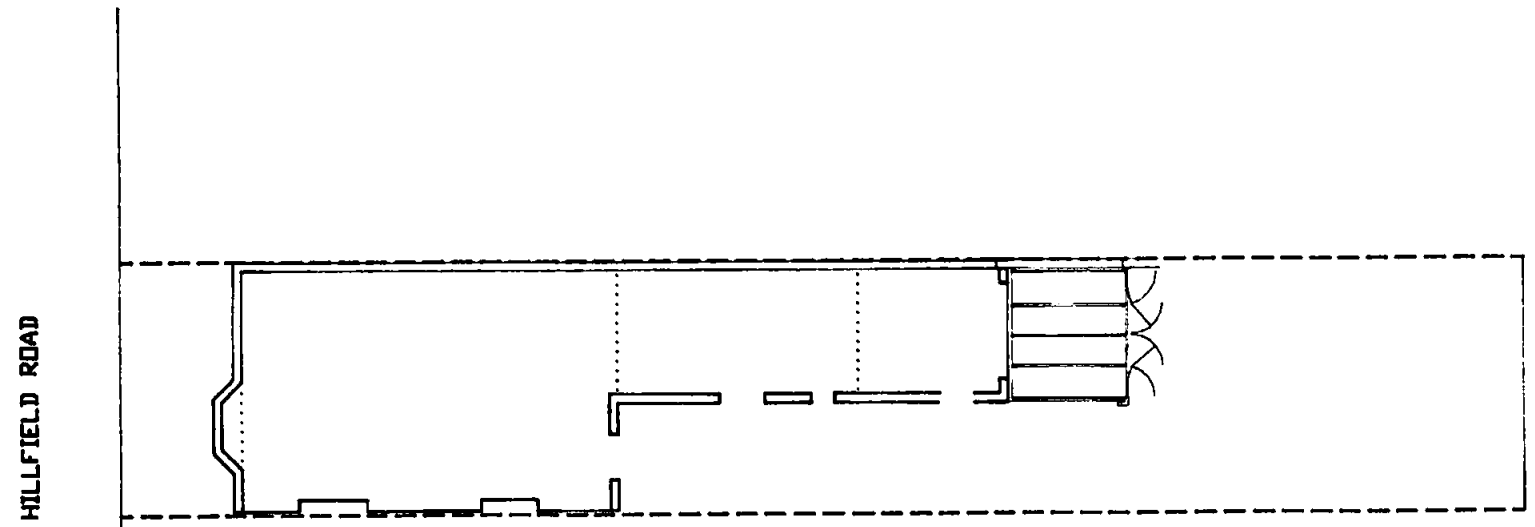
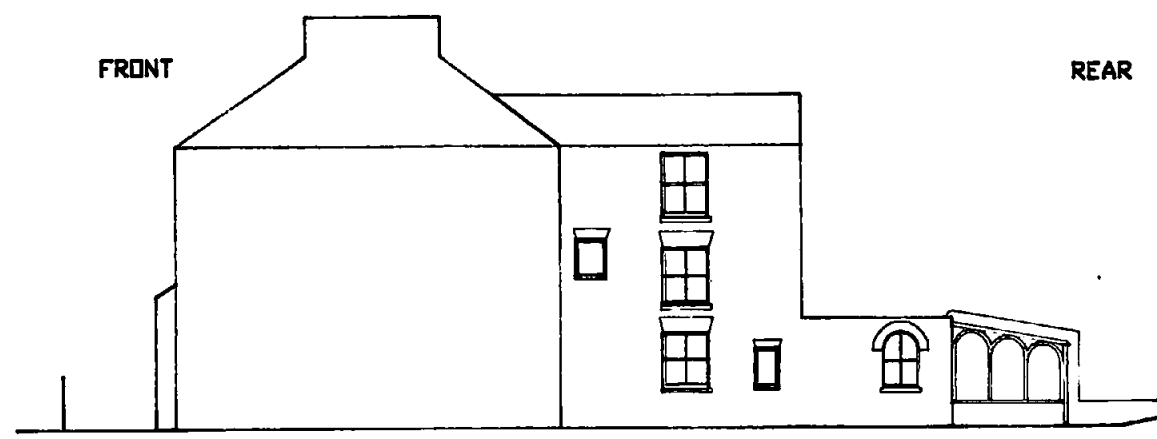


LONDON BOROUGH OF CAMDEN
TOWN AND COUNCIL PLANNING ACTS
06 DEC 1989
PLANS APPROVED
ON BEHALF OF THE COUNCIL



PLAN

PROJECT: 55 Hillfield Road NW6
TITLE: Proposed New Conservatory
SCALE:
DATE: 20 August 1989
DRAWING NUMBER: 89 HR02
REVISION:
PRODUCED BY: Simon Bocking Building Services
7 St Johns Grove
London N19 5RV
01-272 9250



SECTION / SIDE ELEVATION



REAR ELEVATION

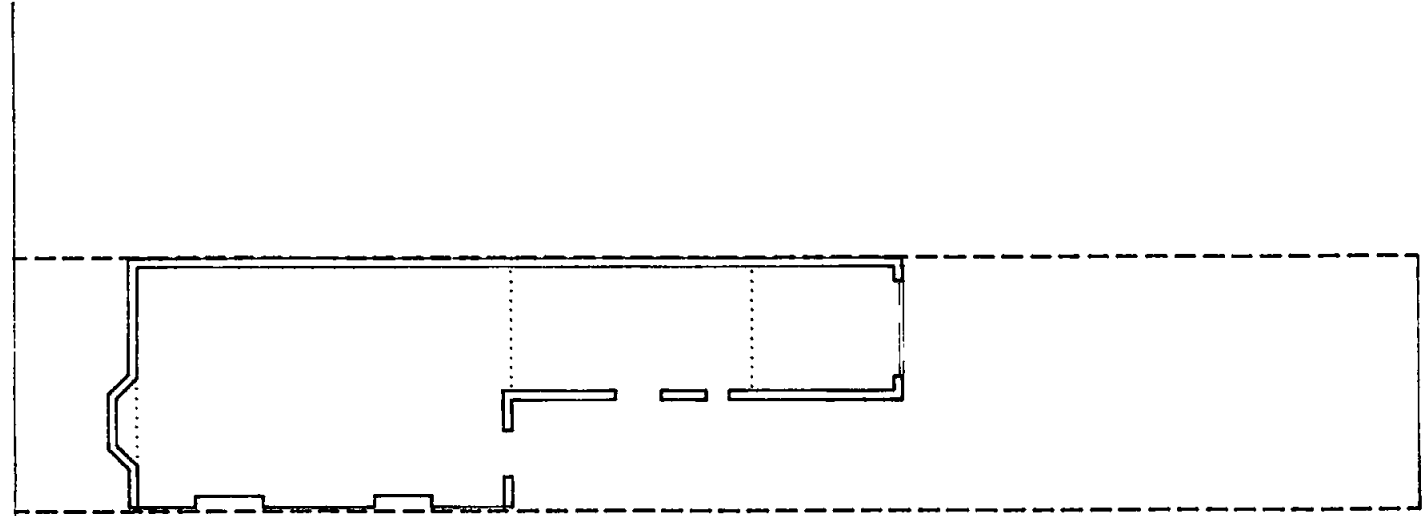
TP8905645

LONDON BOROUGH OF CAMDEN
 TOWN AND COUNTRY PLANNING ACTS
 06 DEC 1989
 PLANS APPROVED
 ON BEHALF OF THE COUNCIL

NORTH



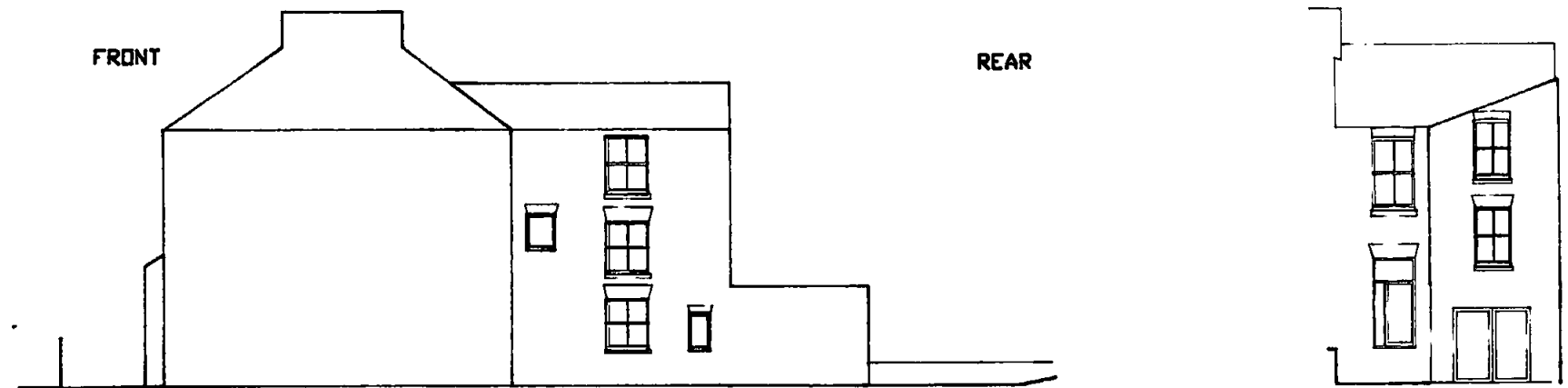
HILLFIELD ROAD



PLAN

FRONT

REAR



SECTION / SIDE ELEVATION

REAR ELEVATION

PROJECT: 55 Hillfield Road NW6

TITLE: Existing

SCALE: 1 : 200

DATE: 20 August 1989

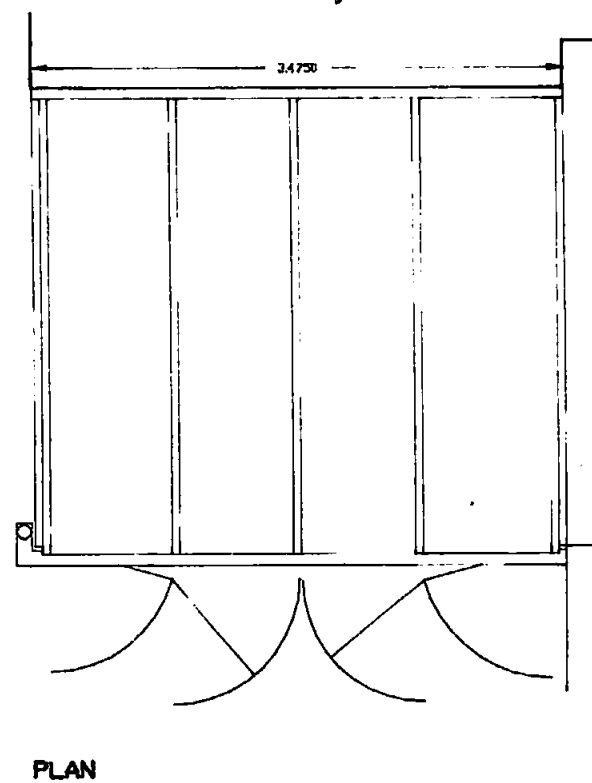
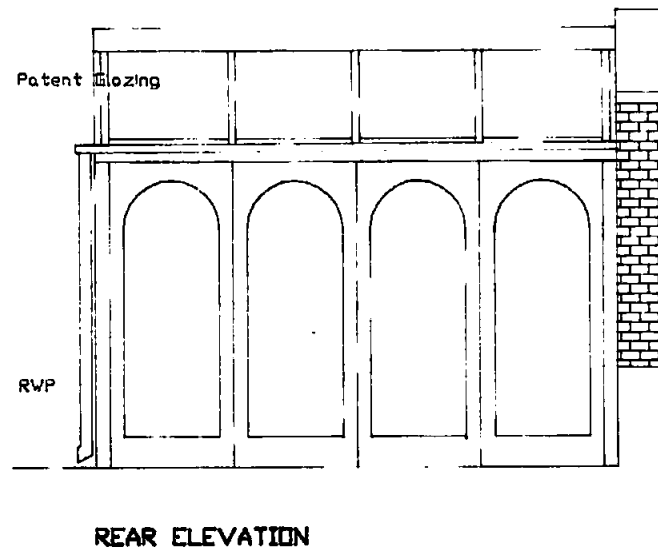
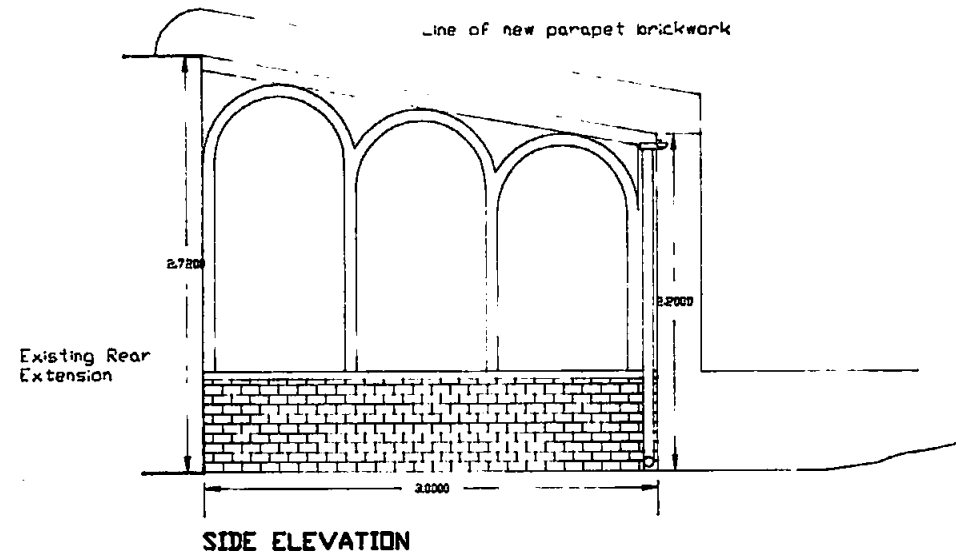
DRAWING NUMBER: 89 HR01

REVISION:

PRODUCED BY: Simon Bocking Building Services
 7 St Johns Grove
 London N19 5RW
 01-272 9250

55 HILLFIELD ROAD NW6
 TOWN AND COUNTRY PLANNING ACTS
 06 DEC 1989
 PLANS APPROVED
 ON BEHALF OF THE COUNCIL

FTP8905645



PROJECT: 55 Hillfield Road NW6
TITLE: Proposed New Conservatory
SCALE: 1 : 50
DATE: 20 August 1989
DRAWING NUMBER: 89 HR03
REVISION:

PRODUCED BY: Simon Bocking Building Services
 7 St Johns Grove
 London N19 5RW
 01-272 9250

LONDON BOROUGH OF CAMDEN
 TOWN AND COUNTRY PLANNING ACTS
 06 DEC 1989
 PLANS APPROVED
 ON BEHALF OF THE COUNCIL

TP8905645