

PROPOSED EXTERNAL ELEVATION
SCALE 1: 50

Allow to supply new vinyl to door logo of Berkshire Hathaway and Kay & CO. see drawings KC PS 31

BERKSHIRE HATHAWAY and Kay & Co made from perspex letters individually laser cut to match the brand cabinet colour all illuminated with leds illuminated at the front. The letters will need to be fixed to the rods to fit on existing brackets the rails will be black. The letters will need a cable from the frame for the illumination clear where possible. A sample will be required of one letter prior to manufacture of all. Home Service will also need to be illuminated.

Allow to remove existing letters and prepare the rods and glass for new signage

Projecting sign round frame made with a powdercoated steel carcass with acrylic panels at the front with applied vinyl the first round off white perspex section will be built up and the second internal section will be perspex with vinyl applied so that the logo is illuminated all fixed back as existing signage with an offset bracket.

Sign illuminated with internal leds feed fed through bracket main body of sign to match RAL 4007

The Contractor to advise on all details and ensure stability and strength of construction. The Contractor to provide setting out and rod drawings for approval prior to construction.

The Contractor to check all dimensions on site and relate to these drawings. The Contractor to report any discrepancies to Designers to construction.

All services to Local Authorities, BCO and Environmental Health requirements and to Service Engineer's details.

All structure to Structural Engineer's details and Local Authority and BCO requirements.

All construction and materials to comply

Contractor shall comply with:
The CDM 2007 Regulations
Fire Precautions Act 1971 ;
Code of Practice for the Prevention of Fires on Construction sites and Buildings Undergoing Refurbishment (workplace) regulations 1997

Health & Safety at Work Regulations 1974
Code of Welfare conditions as outlined in the National Working Rule Agreement for the Building Industry and any Statutory Rules and Orders relating to the provision and maintenance of welfare and safety measures and amenities for all work people employed on site.

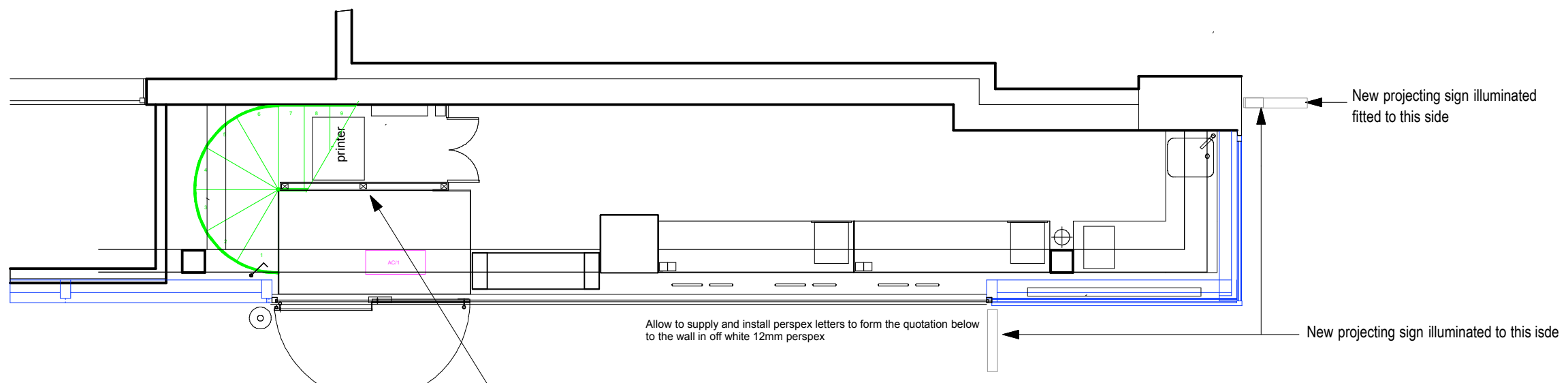
The workplace (Health , safety and welfare) Regulations 1992
The Construction (Health , safety and welfare) Regulations 1996

FOR INFORMATION
THE FACES

| | |
|--|--------------------------------------|
| amendments | |
| client | Kay & Co |
| project | Unit 5, 6 St Pancras SQ |
| title | Proposed Shopfront signage |
| scale | 1: 50 @ A3 |
| dwg by | |
| date | June 2018 |
| dwg no | K&C-PS 32 D_{rev} |
| The Faces Design Ltd Studio 25, Archer Street Studio 10 - 11 Archer Street London W1 D 7AZ info@thefaces.co.uk | |

This drawing is the property of The Faces, copyright is reserved by them and the drawing is issued on the condition that it is not copied, reproduced, retained or disclosed to any unauthorised person, either wholly or in part without the consent in writing from The Faces

REVA 11/7/18 Sign amended
REV B 16/8/18 Signage amended to round
REV C 22/8/18 Signage notes amended.
REV D 25/8/18 Revised quote and Home services now illuminated



PROPOSED GROUND FLOOR PLAN
SCALE 1: 50

"A home is one of the most important assets that most people will ever buy. Homes are also where memories are made and you want to work with someone you can trust"

Warren Buffet ,Chairman and CEO, Berkshire Hathaway Inc.



SCALE