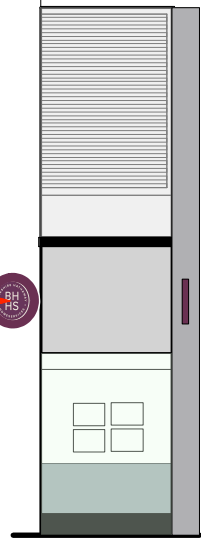
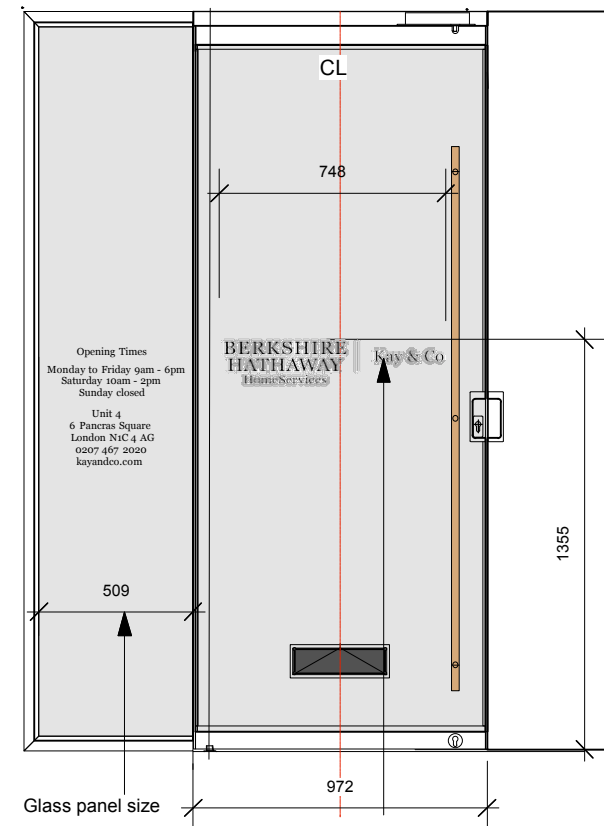


**PROPOSED ELEVATION
SCALE 1: 100**



**SIDE ELEVATION
SCALE 1: 100**

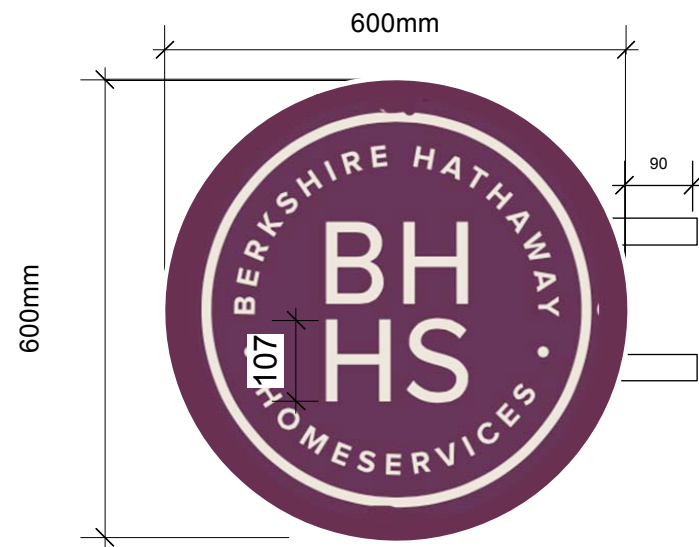
BERKSHIRE HATHAWAY and Kay & Co made from perspex letters individually laser cut to match the brand cabernet colour all illuminated with leds illuminated at the front. The letters will need to be fixed to the rods to fit on existing brackets the rails will be black. The letters will need a cable from the frame for the illumination clear where possible. A sample will be required of one letter prior to manufacture of all.



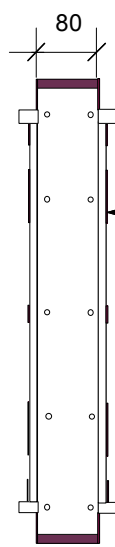
**DOOR ELEVATION VINYL
1: 25**

Vinyl to be sandblasted vinyl the door and side window with address and telephone number and opening hours.

Fixing bracket back to building facade in one location and shop frame in the other location all are in situ



**PROPOSED PROJECTING SIGN
DETAIL B - SCALE 1: 10**



Projecting sign round frame made with a powdercoated steel carcass with acrylic panels at the front with applied vinyl the first round off white perspex section will be built up and the second internal section will be perspex with vinyl applied so that the logo is illuminated all fixed back as existing signage with an offset bracket. Sign illuminated with internal leds feed fed through bracket main body of sign to match RAL 4007



**PROPOSED MAIN SIGN
SCALE 1: 20**

BERKSHIRE HATHAWAY and Kay & Co and HomeServices made from perspex letters individually laser cut to match the brand cabernet colour all illuminated with leds illuminated at the front. The letters to be illuminated at the front and a sample to be made first.

The letters will need to be fixed to the rods to fit on existing brackets the rails will be black. The letters will need a cable from the frame for the illumination clear where possible.

All setting out of brand artwork to be provided by the client

The Contractor to advise on all details and ensure stability and strength of construction. The Contractor to provide setting out and rod drawings for approval prior to construction.

The Contractor to check all dimensions on site and relate to these drawings. The Contractor to report any discrepancies to Designers to construction.

All services to Local Authorities, BCO and Environmental Health requirements and to Service Engineer's details.

All structure to Structural Engineer's details and Local Authority and BCO requirements.

All construction and materials to comply

Contractor shall comply with:
The CDM 2007 Regulations
Fire Precautions Act 1971 ;
Code of Practice for the Prevention of Fires on Construction sites and Buildings Undergoing Refurbishment (workplace) regulations 1997

Health & Safety at Work Regulations 1974
Code of Welfare conditions as outlined in the National Working Rule Agreement for the Building Industry and any Statutory Rules and Orders relating to the provision and maintenance of welfare and safety measures and amenities for all work people employed on site.

The workplace (Health , safety and welfare) Regulations 1992
The Construction (Health , safety and welfare) Regulations 1996

FOR INFORMATION

THE FACES

amendments	
client	Kay & Co
project	Unit 5 , 6 St Pancras Square
title	Proposed Shopfront Signage
scale	1: 100 & 1:10 @ A3
dwg by	
date	June 2018
dwg no	K&C-PS -31 rev D
The Faces Design Ltd Studio 25, Archer Street Studio, 10 - 11 Archer Street London W1 D 7AZ info@thefaces.co.uk	
This drawing is the property of The Faces, copyright is reserved by them and the drawing is issued on the condition that it is not copied, reproduced, retained or disclosed to any unauthorised person, either wholly or in part without the consent in writing from The Faces	
REV A 11/8/18 signage amended REV B signage amended to round REV C 22/8/18 Sign amended and door info added REV D 25/8/18 Home services noe illuminated .	