

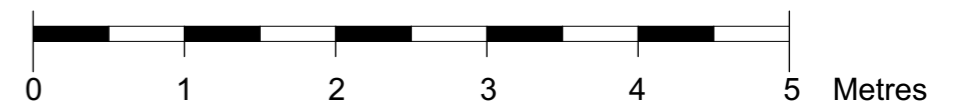
No.19

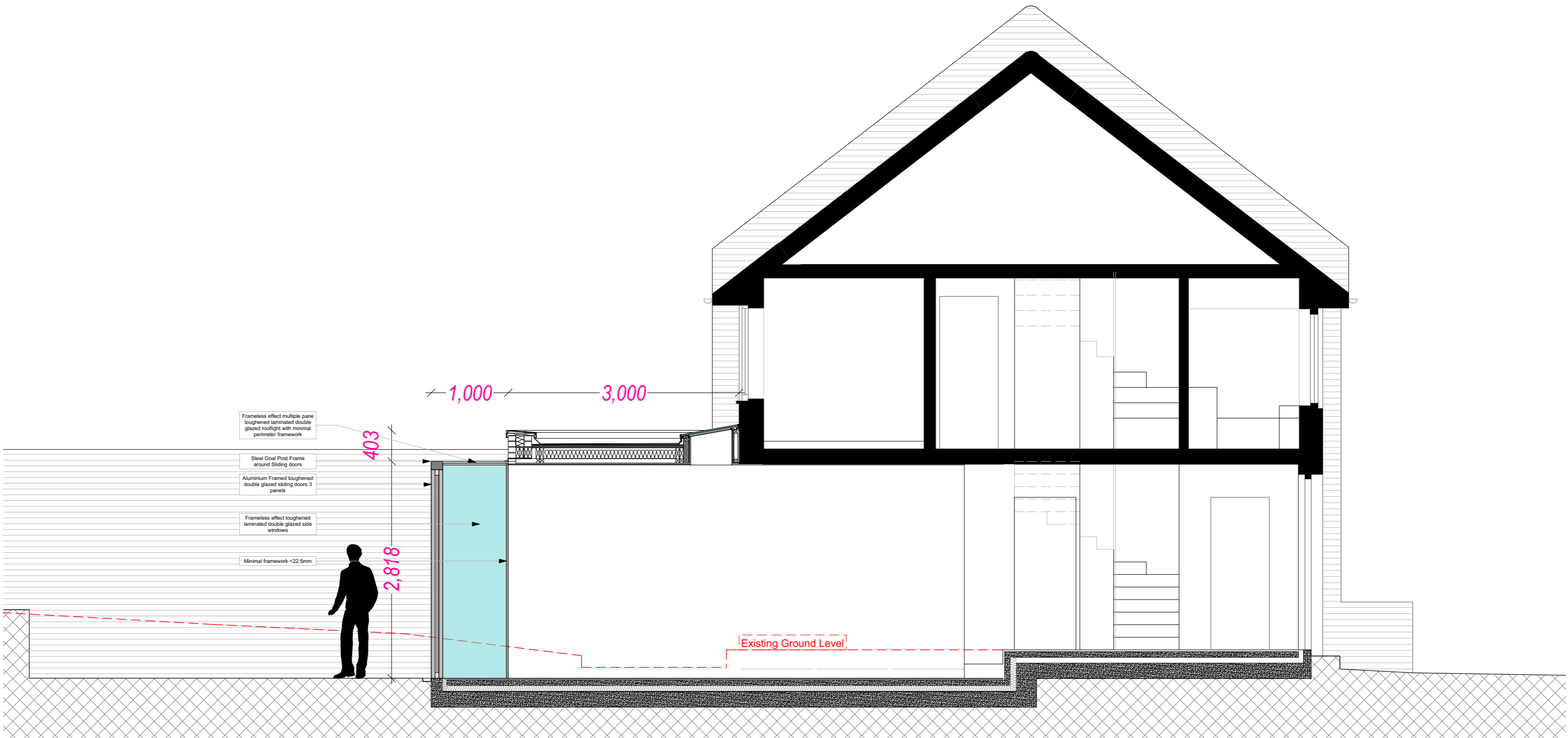
No.17

No.15

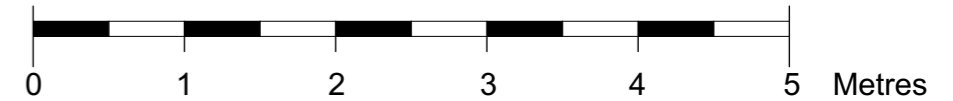


LIMITED VIEW



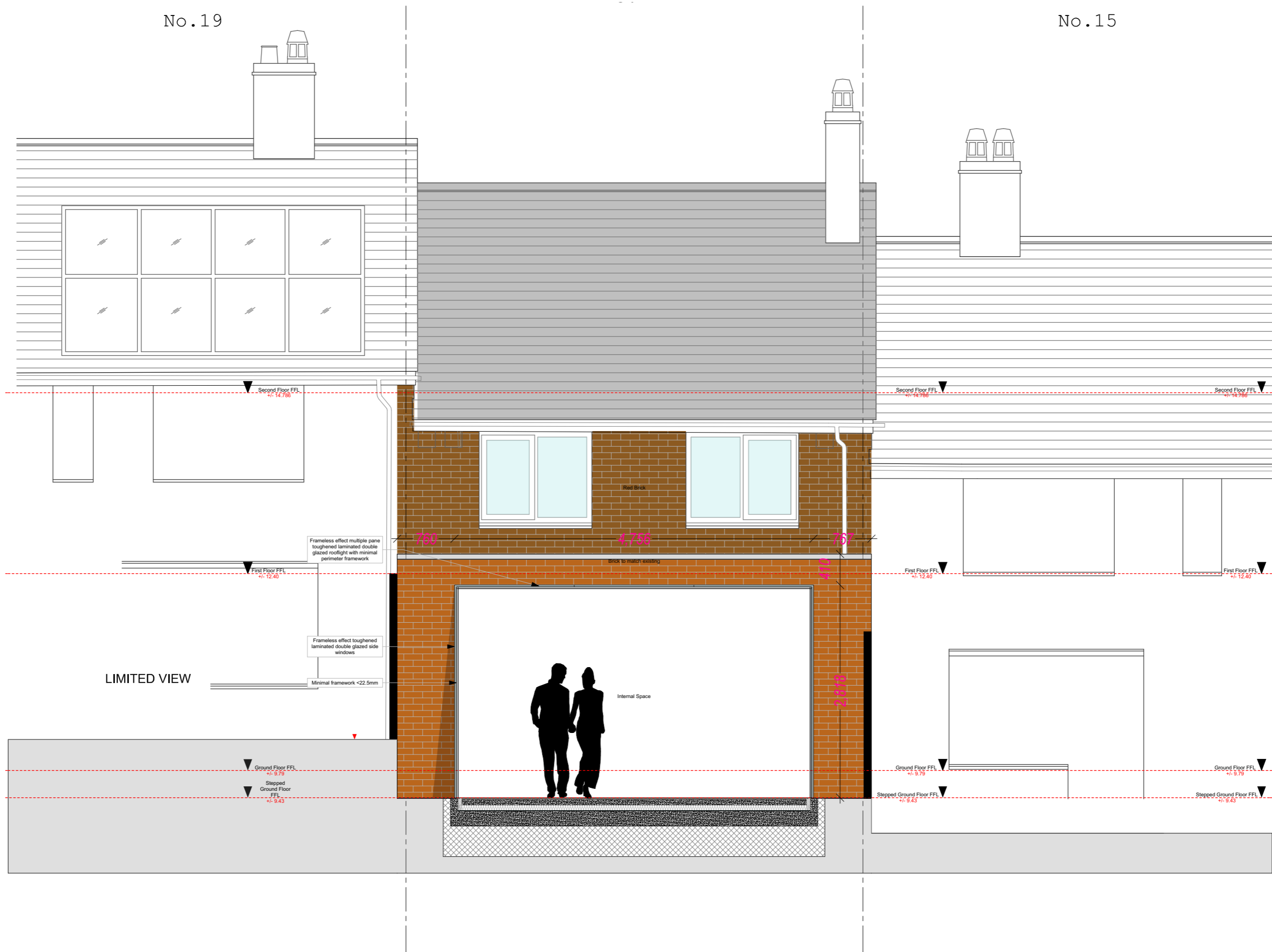


- Frameless effect multiple pane toughened laminated double glazed rooflight with minimal perimeter framework
- Steel Gost Post Frame around Sliding doors
- Aluminium Framed toughened double glazed sliding doors 3 panels
- Frameless effect toughened laminated double glazed side windows
- Minimal framework <22.5mm



No.19

No.15



LIMITED VIEW

Frameless effect multiple pane toughened laminated double glazed rooflight with minimal perimeter framework

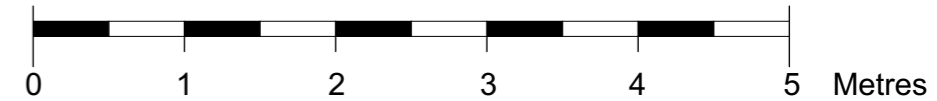
Frameless effect toughened laminated double glazed side windows

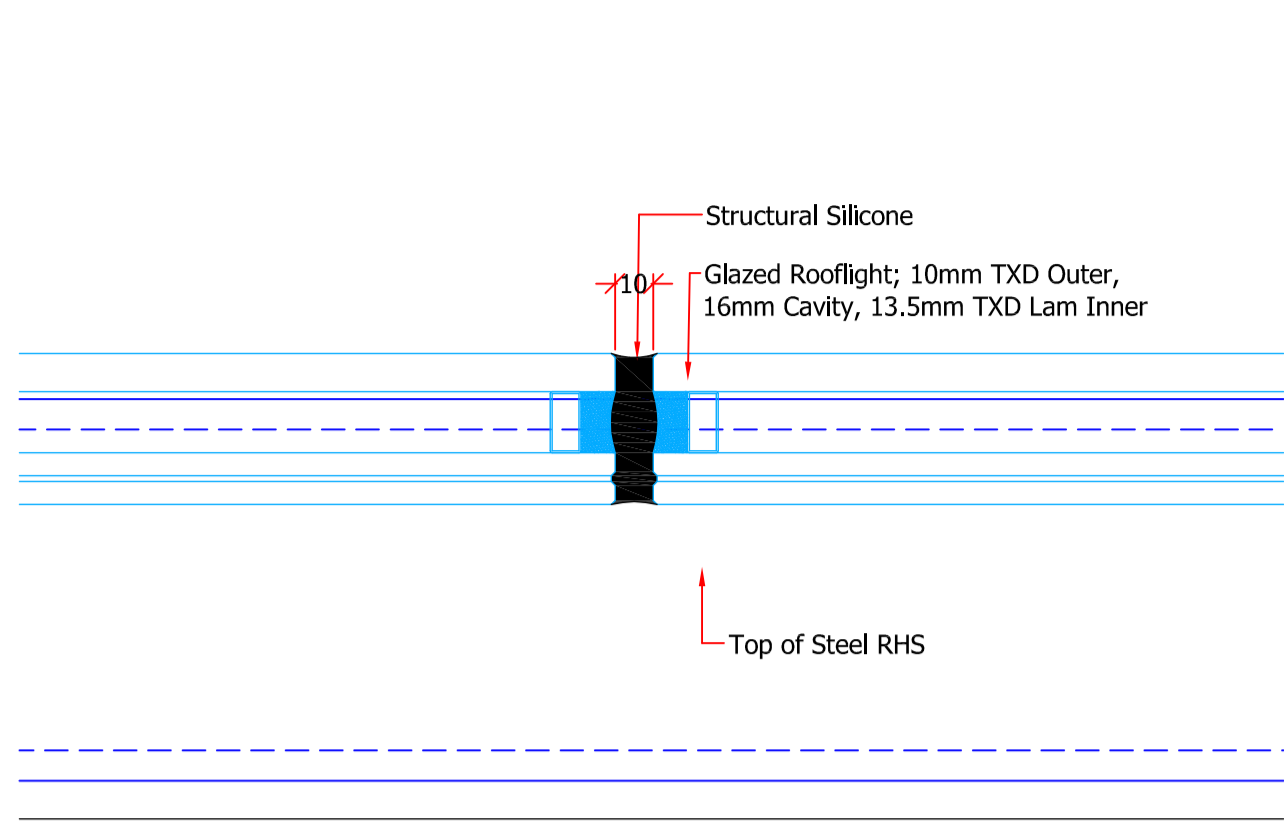
Minimal framework <22.5mm

Internal Space

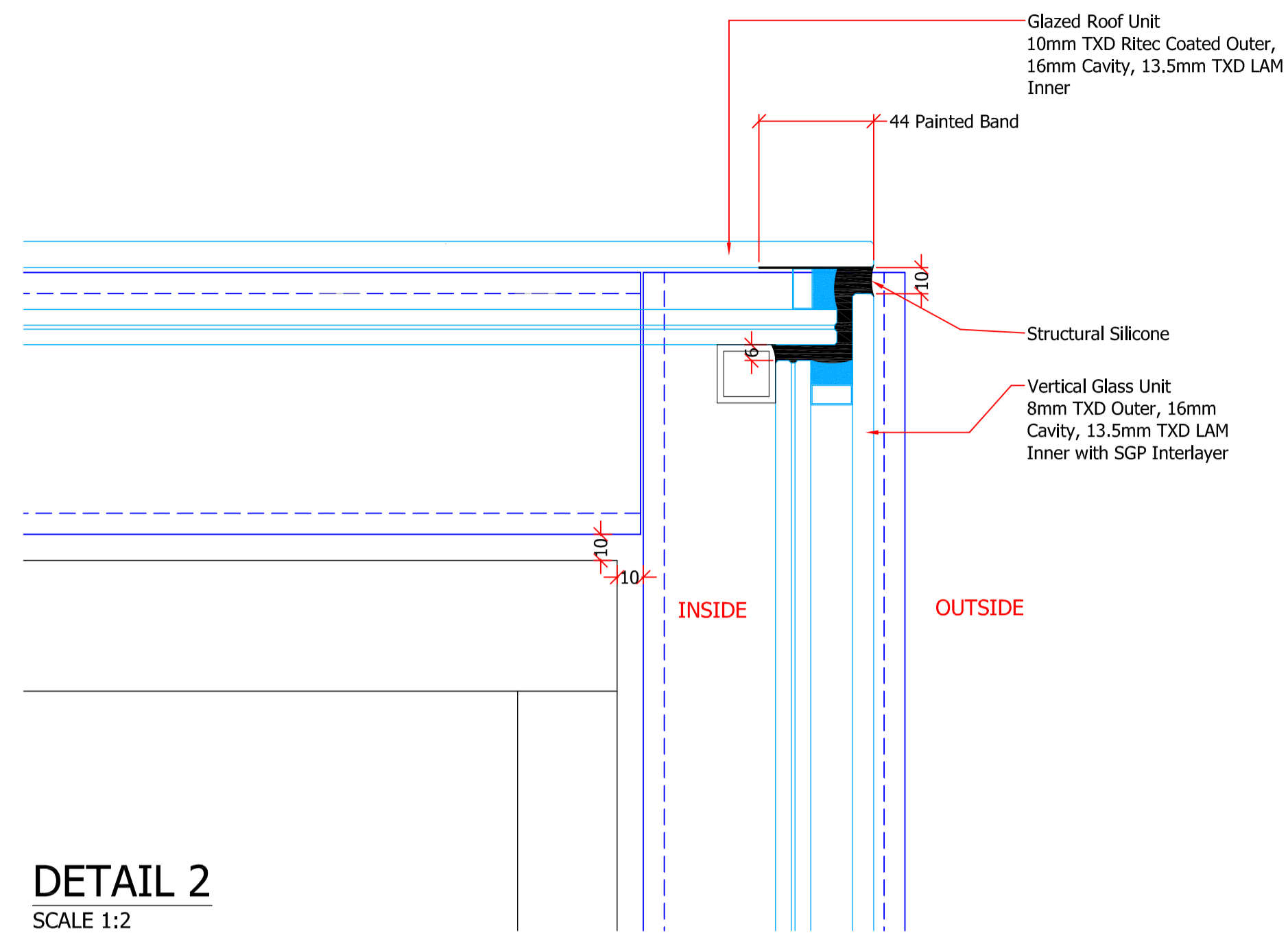
Red Brick

Brick to match existing

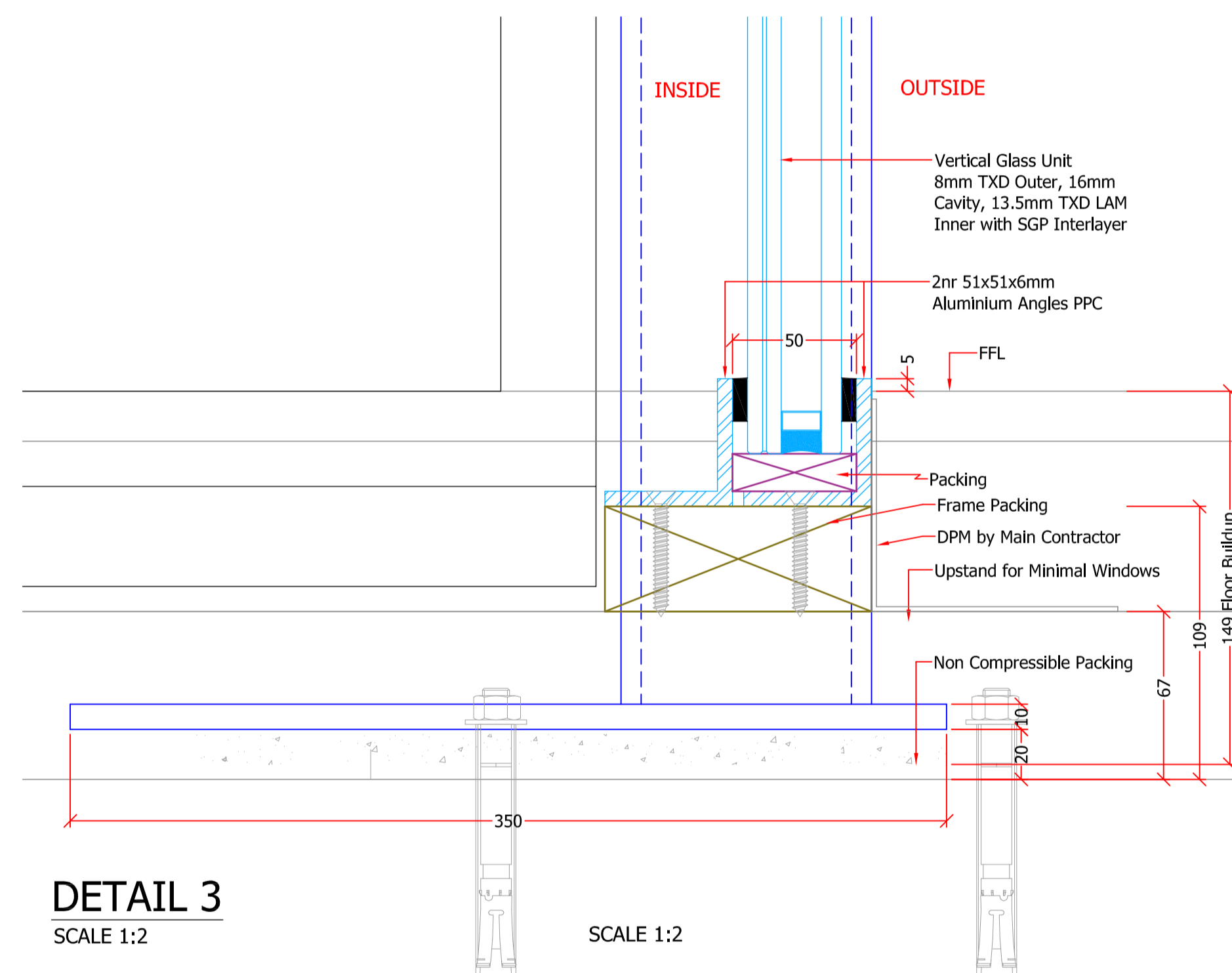




**DETAIL 1**  
SCALE 1:2

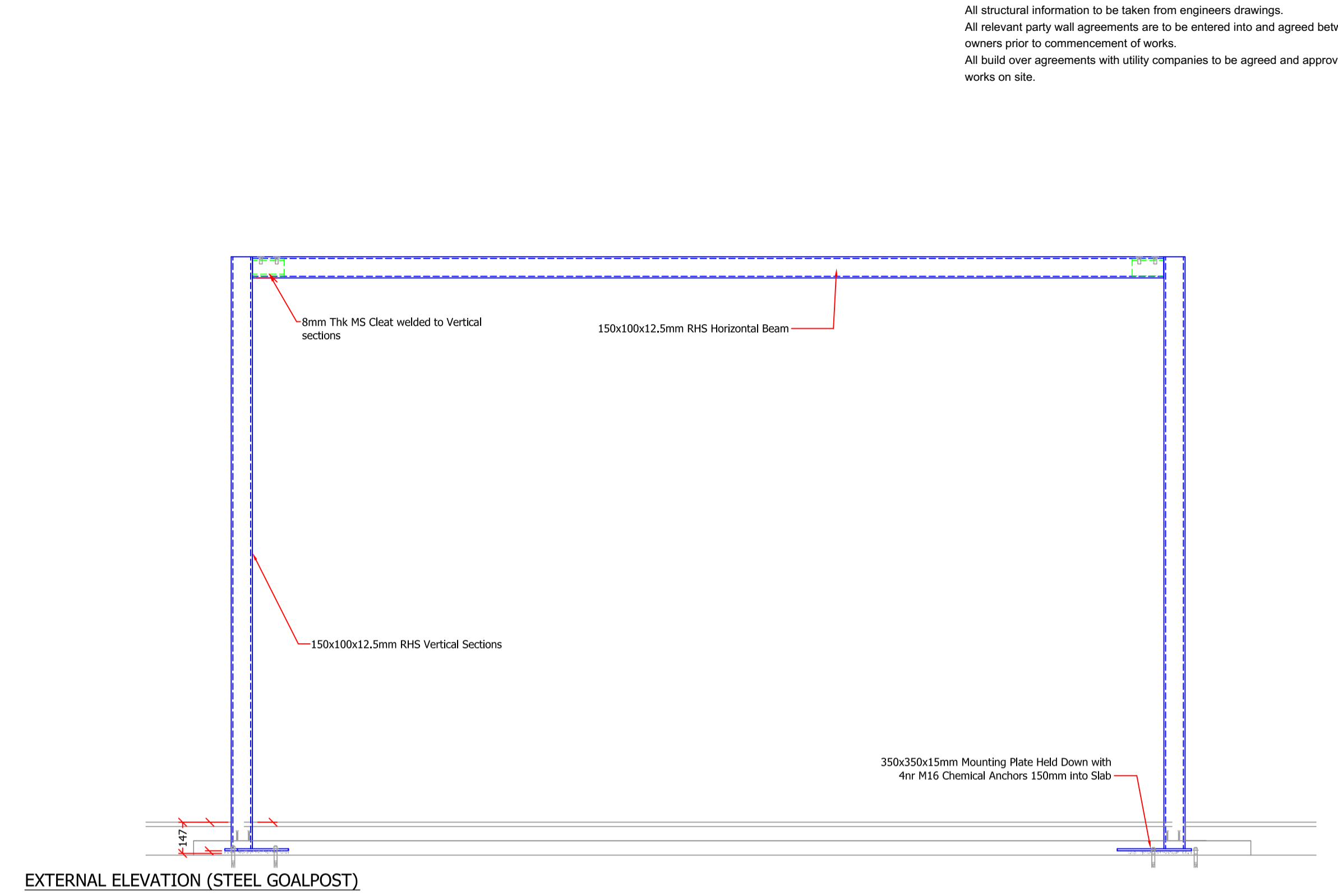


**DETAIL 2**  
SCALE 1:2

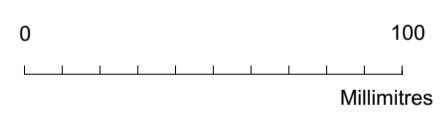


**DETAIL 3**  
SCALE 1:2

SCALE 1:2



EXTERNAL ELEVATION (STEEL GOALPOST)



**NOTES:**  
Report all errors and discrepancies promptly to architects before proceeding with the works.  
Do not scale drawing. Figured dimensions to be worked to in all cases.  
The contractor is responsible for checking dimensions, tolerances and references.  
All structural information to be taken from engineers drawings.  
All relevant party wall agreements are to be entered into and agreed between owners prior to commencement of works.  
All build over agreements with utility companies to be agreed and approved prior to works on site.

REV	DATE	REVISION / AUTHOR
PROJECT: 17 Kemplay Road		
DRAWING TITLE:		

**Roof and Side Glass Junction Detail, Goal Post Detail**

DRAWING NO.: Project number/208		REV: -
CLIENT: Anne Marie & Jon Seymour		
STATUS: Planning	CHECKED: AC	SCALE: 1:2, 1:20 @ A1
DRAWN: AK	CHECKED: AC	DATE: July 2018