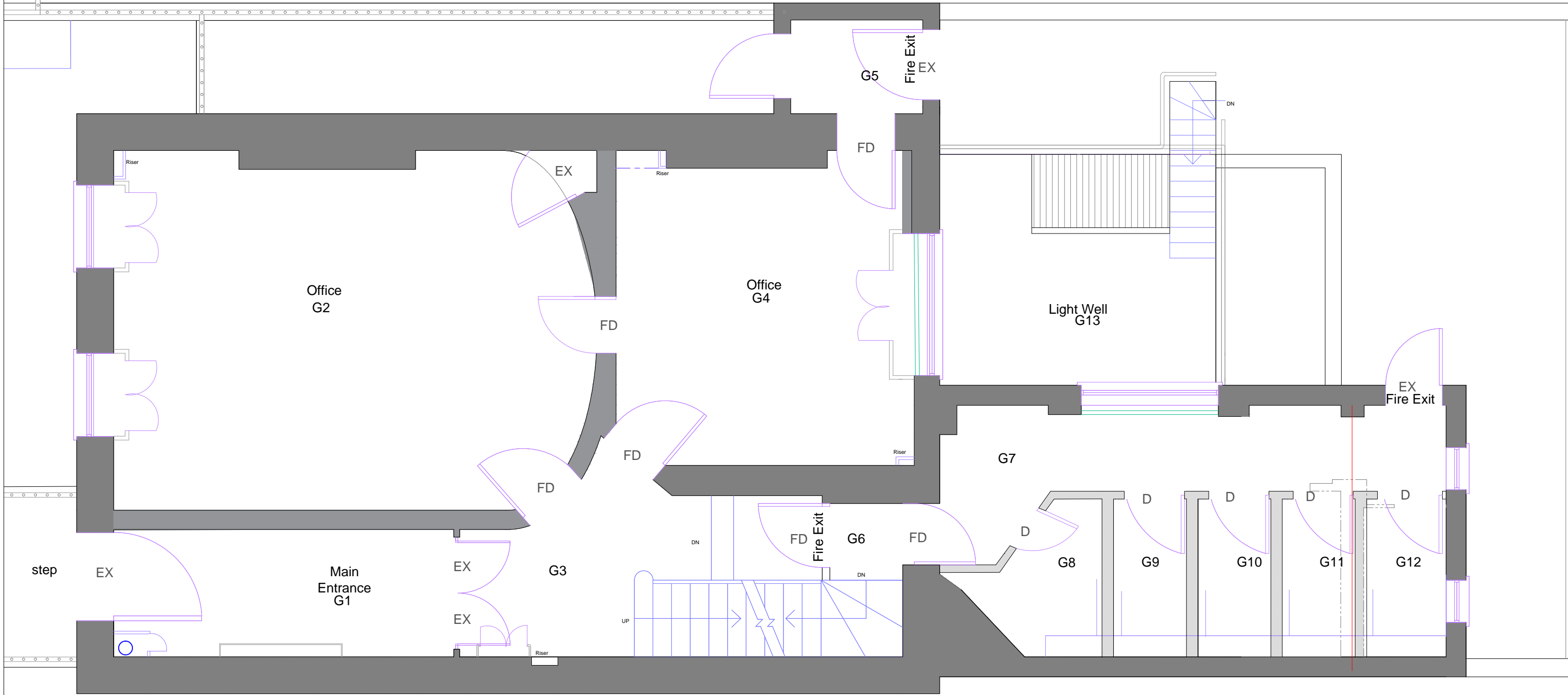


- Note:
1. This drawing is copyright.
  2. Contractors must check all dimensions on site.
  3. Figured dimensions are to be used in preference to scaled dimensions.
  4. Discrepancies must be reported immediately.

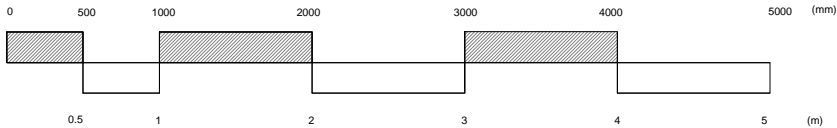


Title	
Surface mounted fluorescent light	
Light switch - single rocker	
Light switch - dimmer	
Light switch - double rocker	
Wall light fitting	
Double switch socket outlet	
Dome ceiling or wall mounted light	
Electric Panelled Radiator	
Fire alarm break glass call point	
Fire alarm panel	
Intruder alarm	
Distribution Board	
Smoke Detector	
Chandelier	
Air Cooling	
Emergency Light fitting	
Entry Phone	
Ventilation extract diffuser	
Fire extinguisher	
Fire alarm sounder	
Drainage gully	
M/H drainage inspection chamber	
Steel Beam	
Stud partition	
FD	Fire Door
EX	Existing Door
D	Door

Notes: Alteration works

- Remove the existing kitchen partitions and two toilets to the rear of the ground floor.
- Remove the load bearing wall from the rear toilets and construct new additional facilities G11 and G12 as per the engineers details.
- Construct new stud timber partitions approx 150mm width. Timber stud partitions to be built of 4x2 timber with vertical struts and noggins, fixed at ceiling level a 4x2 plate. With approved insulation, finished in plywood with plasterboard over, that will be screwed into timber. The joints scrimmed and skim finished. This will provide 5No W/C's.
- Remove the existing dropped ceilings and fix new plasterboard dropped ceilings to rooms G8 - G12.
- Construct new built in units for air cooling system and 1No electric panel radiator to G1, G2 and G4.
- All fireplaces to be retained to room numbers G2, G4 and G8.
- Fire doors (FD) Supply and fit new Georgian style 6 panel oak veneered doors to be 30 minute resistant. Complete with intumescent strips. Smoke seals routed into door edges, complete with new ironmongery and over head closer's.
- Existing doors (Ex) retain existing doors.

Scale



REVISION	DATE	DESCRIPTION	BY
PROJECT			
<b>MATTHEWS &amp; SON LLP</b> Chartered Surveyors			
26 Bedford Square, London, WC1B 3HP			
DETAIL			
<b>87 GOWER STREET, LONDON, WC1E 6AF</b>			
<b>Proposed Ground Floor Layout</b>			
DATE	08/05/2018	DRAWN BY	HAB
SCALE	1:50 @ A3	CHECKED BY	
DRAWING NUMBER		REVISION	
<b>13002/3/101</b>			