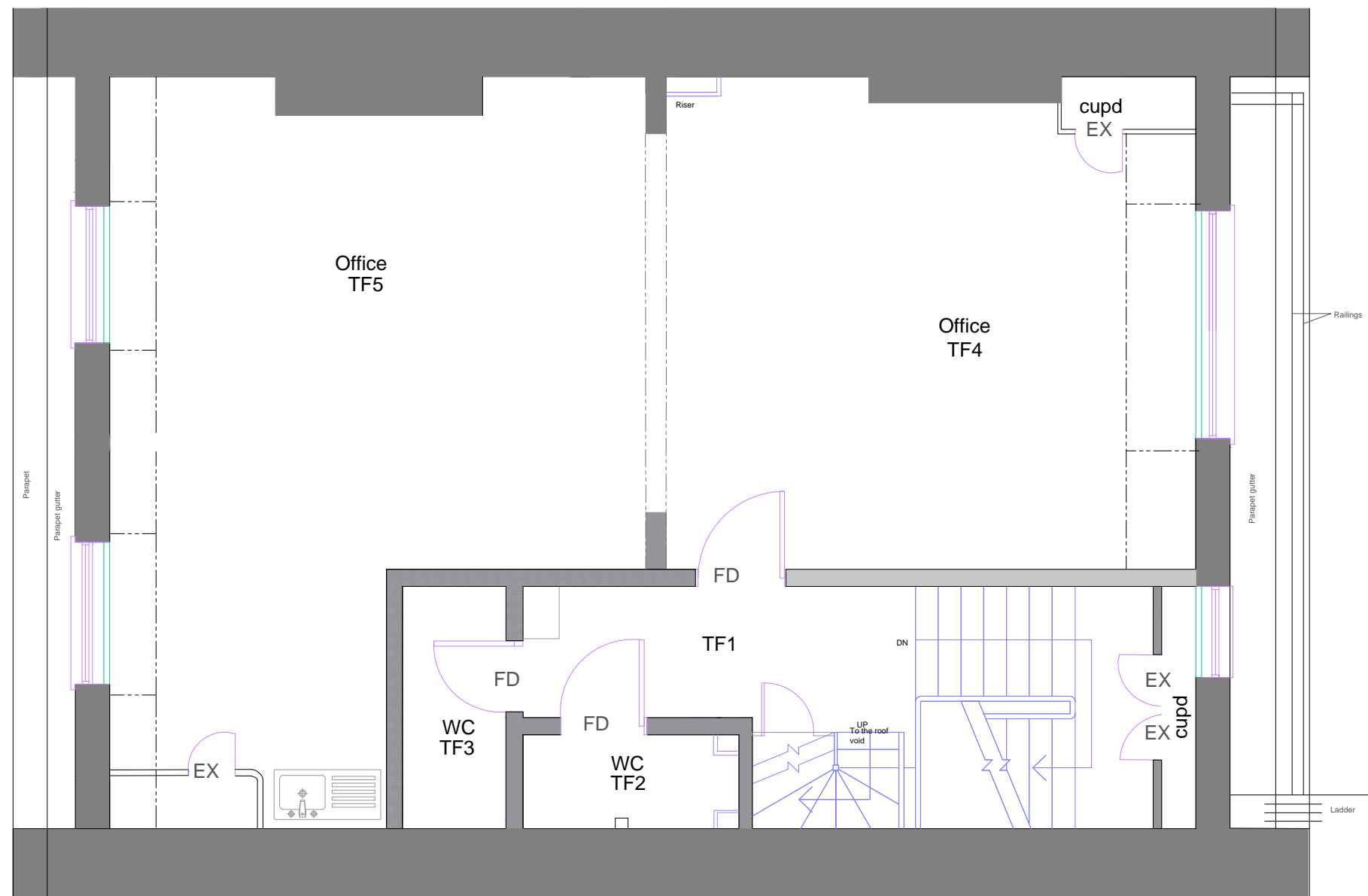
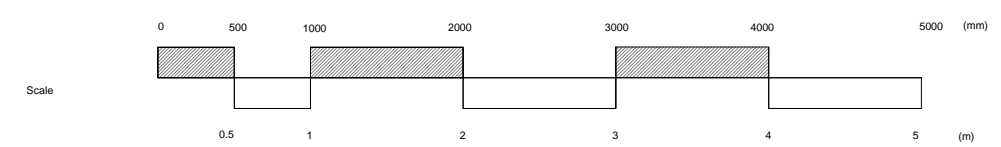


- Note:
1. This drawing is copyright.
 2. Contractors must check all dimensions on site.
 3. Figured dimensions are to be used in preference to scaled dimensions.
 4. Discrepancies must be reported immediately.



Title	Symbol
Surface mounted fluorescent light	[Symbol]
Light switch - single rocker	[Symbol]
Light switch - dimmer	[Symbol]
Light switch - double rocker	[Symbol]
Wall light fitting	[Symbol]
Double switch socket outlet	[Symbol]
Dome ceiling or wall mounted light	[Symbol]
Electric Paneled Radiator	[Symbol]
Fire alarm break glass call point	[Symbol]
Fire alarm panel	[Symbol]
Intruder alarm	[Symbol]
Distribution Board	[Symbol]
Smoke Detector	[Symbol]
Chandelier	[Symbol]
Air Cooling	[Symbol]
Emergency Light fitting	[Symbol]
Entry Phone	[Symbol]
Ventilation extract diffuser	[Symbol]
Fire extinguisher	[Symbol]
Fire alarm sounder	[Symbol]
Drainage gulley	[Symbol]
M/H drainage inspection chamber	[Symbol]
Steel Beam	[Symbol]
Stud partition	[Symbol]
FD	Fire Door
EX	Existing Door
D	Door

- Notes: Alteration works
- Removal of the stud partition wall to room TF5 creating an open plan office and kitchenette.
 - Carefully form an opening to the lateral walls between TF4 and TF5, leaving nib of 500mm as per engineers design with bespoke moulded architraves fitted all round to protect edges of existing lath and plaster walls.
 - Additional W/C will be created as shown to room TF3.
 - New stud partition will be at this level approx 140mm width, timber framed incorporating insulation. Finished with plywood and plasterboard over, with the joints scrimmed and skimmed.
 - Removal of the existing drop ceilings to restore original ceiling height.
 - Fireplaces to be retained to room numbers TF4 and TF5.
 - Fire doors (FD) Supply and fit new Georgian style 6 panel oak veneered doors to be 30 minute resistant. Complete with intumescent strips. Smoke seals routed into door edges, complete with new ironmongery and over head closer's.
 - Existing doors (Ex) retain existing doors.



REVISION	DATE	DESCRIPTION	BY

MATTHEWS & SON LLP
Chartered Surveyors
26 Bedford Square, London, WC1B 3HP

PROJECT
**87 GOWER STREET,
LONDON, WC1E 6AF**

DETAIL
**Proposed Third Floor
Layout**

DATE: 20/03/2018
DRAWN BY: HAB
CHECKED BY:

SCALE: 1:50 @ A3
DRAWING NUMBER: **13002/3/104**
REVISION: