

- **SP01**  
LOWER GROUND  
Hallway (panelled)
- **GROUND FLOOR**  
Entrance Hall (panelled)
- **FIRST FLOOR**  
First Floor Landing (panelled)

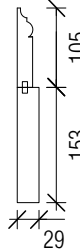


Profile taken from  
No.15 Elder Street. c.1727  
(Cruikshank, 1990)

- **SP02**  
GROUND / FIRST FLOOR  
Main Stair (panelled)

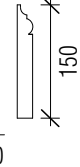


- **SP03**  
GROUND FLOOR  
Dining Room (panelled)
- **FIRST FLOOR**  
Bedrooms



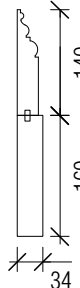
Profile taken from  
No.15 Elder Street. c.1727  
(Cruikshank, 1990)

- **SP04**  
GROUND FLOOR  
Library (panelled - pine)



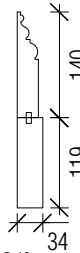
Profile taken from  
No.15 Elder Street. c.1727  
(Cruikshank, 1990)

- **SP05**  
GROUND FLOOR  
Reception Rooms



Profile taken from  
no.s 5-13 Queen Anne's Gate, c.1770  
(Cruikshank, 1990)

- **SP06**  
LOWER GROUND FLOOR  
Reception Rooms

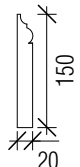


- **GROUND FLOOR**  
Kitchen  
Guest WC

- **FIRST FLOOR**  
Master Suite

Profile taken from no.s 5-13  
Queen Anne's Gate, c.1770  
(Cruikshank, 1990)

- **SP07**  
LOWER GROUND  
Spa / Service Areas  
Gymnasium

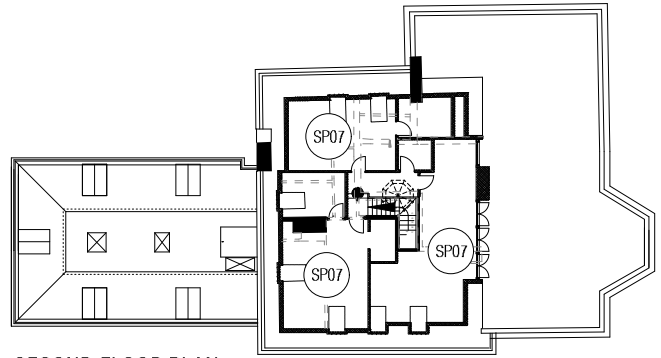


- **FIRST FLOOR**  
Bathrooms and Corridors
- Master En-suite and Closet
- All Areas

Profile taken from  
No.15 Elder Street. c.1727  
(Cruikshank, 1990)

- **SECOND FLOOR**  
All Areas

- ● ● **SP08**  
LOWER GROUND  
FIRST FLOOR  
SECOND FLOOR  
Various support /  
ancillary spaces

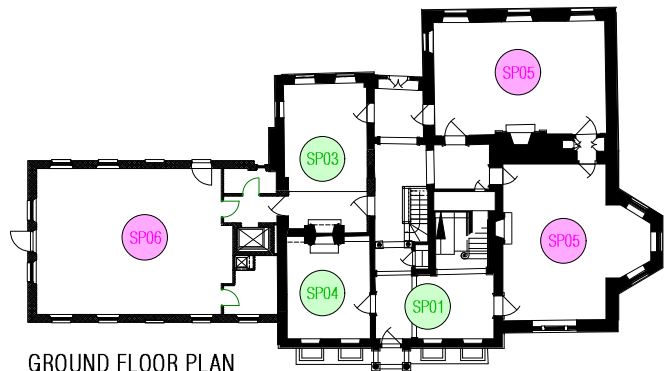


SECOND FLOOR PLAN

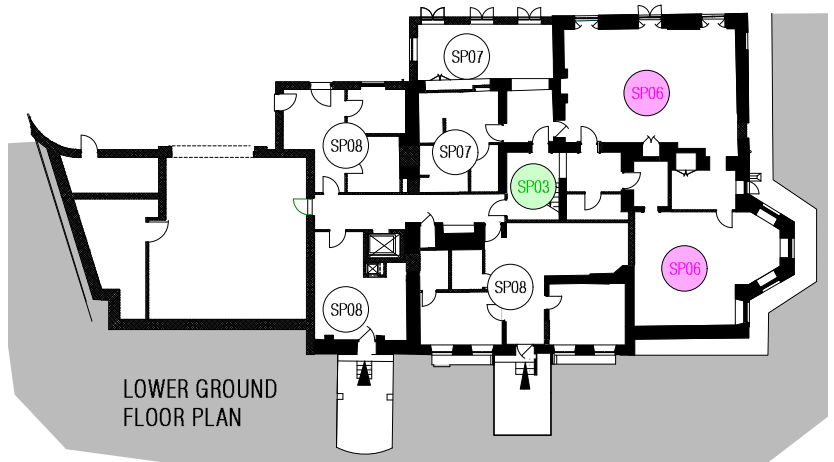


FIRST FLOOR PLAN

1950s above window head level only



GROUND FLOOR PLAN



LOWER GROUND FLOOR PLAN

## PLANNING

FOR 1:1 SKIRTING BOARD DETAILS PLEASE REFER  
TO SUBMITTED DRAWING HH-823 AND HH-824

Project HEATH HOUSE, NORTH END WAY, HAMPSTEAD, NW3 7ET		
Drawing INTERIOR ARCHITECTURAL DETAILS: SKIRTING BOARDS: VISUAL GUIDE		
Drawing No. HH-PL04	Scale 1:10 / PLANS NTS	Date 10.08.2018

**CLIVE CHAPMAN**  
ARCHITECTS  
SUSTAINABILITY CONSULTANTS  
4 EEL PIE ISLAND  
TWICKENHAM MIDDX  
TWI 3DY  
TELEPHONE 020 8891 4837  
EMAIL INFO@CCAR.CO.UK  
WEBSITE WWW.CCAR.CO.UK