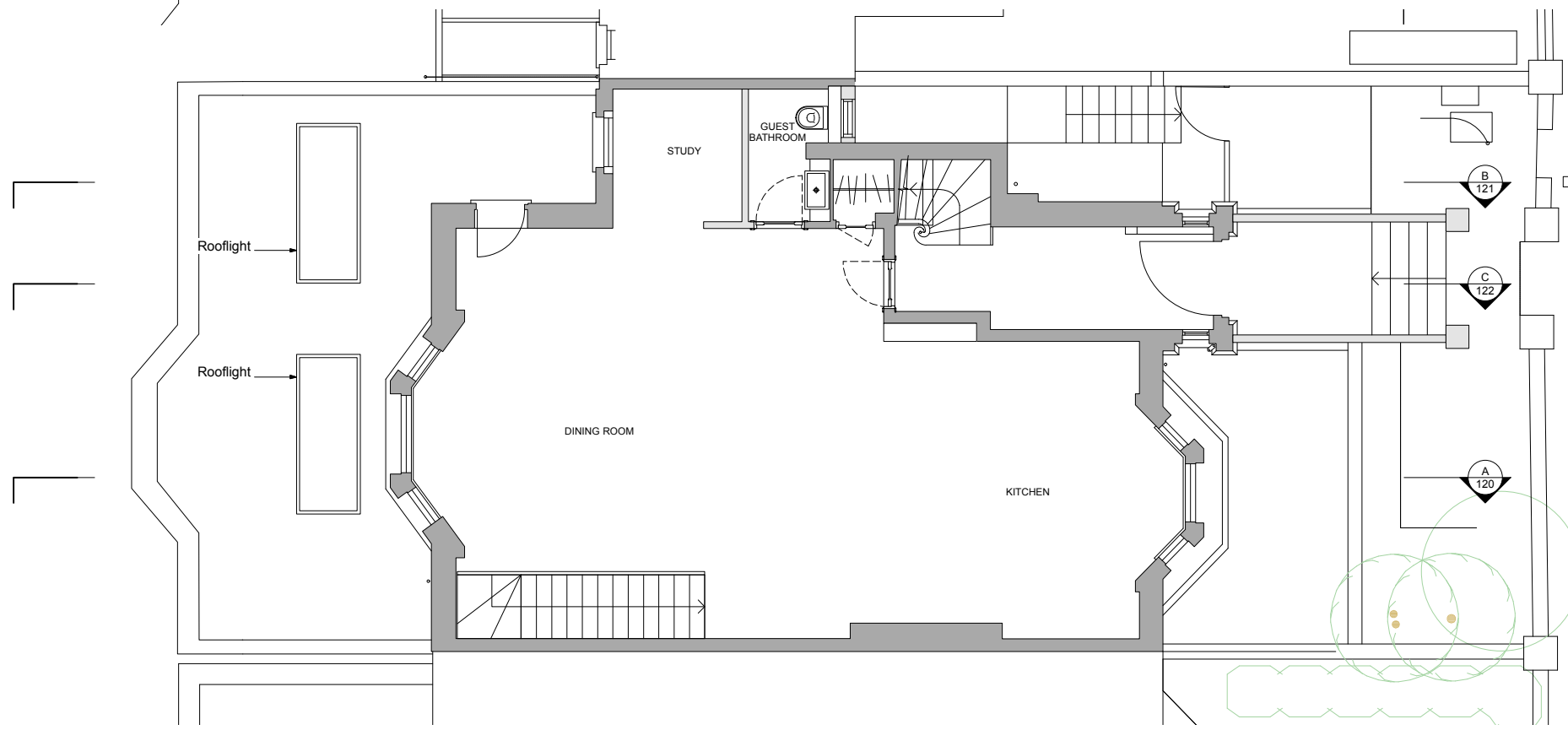
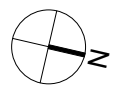


1 PROPOSED LOWER GROUND FLOOR
1:100 @ A3



2 PROPOSED RAISED GROUND FLOOR
1:100 @ A3



KEY:
 ■ EXISTING
 ■ PROPOSED

P5 17.08.18 Issued for Planning
 P4 17.08.18 Issued for Planning
 P3 09.08.18 Issued for Planning
 P2 27.07.18 Issued for Planning
 P1 22.05.18 Issued for Planning
 PPH 20.03.18 Issued for Pre-Planning
 REV DATE REVISION
 Do not scale drawing copyright © architects ltd

PLANNING

tffa ARCHITECTS
 250 Kennington Lane
 London SE11 5RD
 t: 020 7091 9800
 f: 020 7091 9830
 office@tffa.co.uk
 www.tffa.co.uk

project
 121 KING HENRY'S ROAD
 LONDON NW3 3RB

drawing
 PROPOSED PLANS:
 LOWER GROUND AND
 RAISED GROUND FLOOR

date 15.08.18 dep no 230 100
 scale 1:100 @ A3 rev P5