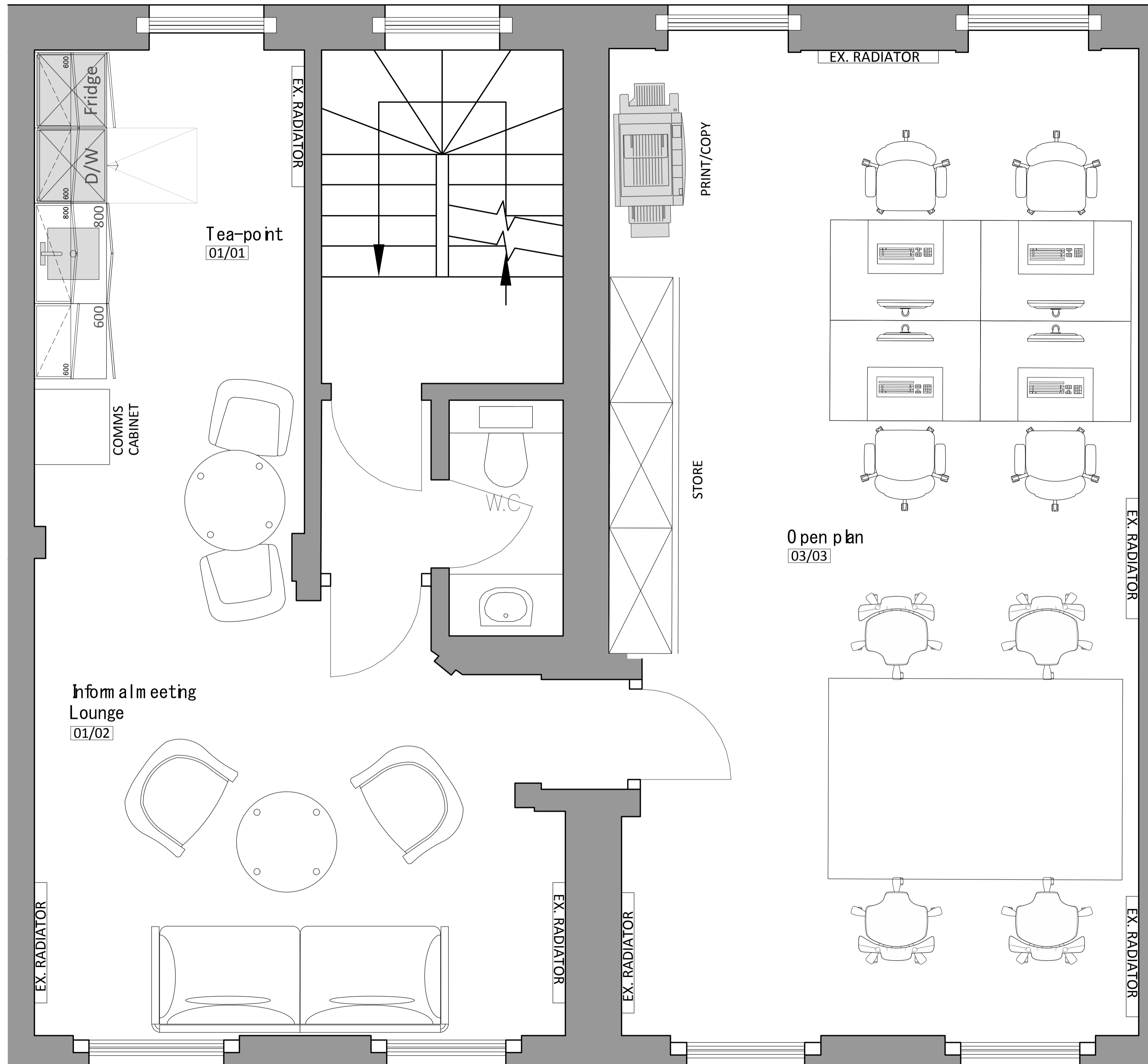


CHING COURT



MONMOUTH STREET

General Arrangement Legend

- Existing Door to remain
- New Single Leaf Door
- Existing Partition to Remain
- New 100mm solid partition constructed from FFL to suspended ceiling level.
- Existing Glazing to Remain.
- New full height, single glazed partition.
- Storage Wall Unit - 500mm deep.
- Storage Wall Unit - 600mm deep.
- Storage Wall Unit - 600mm deep with coat rail and hat shelf.
- Room Label - Floor / Room No.
- Door Label - Floor / Room No.
- Vision Panel
- Self Closing Device
- Digital Keypad Lock
- Electronic Access Control
- 60 Minute Fire Rated Door
- 30 Minute Fire Rated Door

THIS DRAWING IS PROTECTED UNDER COPYRIGHT. THIS DRAWING IS NOT TO BE REPRODUCED IN WHOLE OR PART UNLESS AUTHORISED BY **area** © COPYRIGHT. THIS DRAWING IS NOT TO BE SCALED. THE GENERAL CONTRACTOR IS TO CHECK ALL DIMENSIONS AND NOTIFY THE DESIGNERS OF ANY DISCREPANCIES OR OMISSIONS.

DRAWING TO BE READ IN CONJUNCTION WITH SCOPE OF WORKS

CEILING HEIGHT	
BEAM HEIGHT	
WINDOW HEIGHT	
SILL HEIGHT	

23.08.18	CONTRACT ISSUE	IB	SO
DATE	REV	REVISIONS	SIGN / CHKD

area

The Old Post Office
33 Station Road,
Egham,
Surrey TW20 9LA
T. 01784 274000
info@areasq.co.uk

5th Floor,
Counting House,
53 Tooley Street,
London SE1 2QN
T. 020 7089 6000
www.areasq.co.uk

DRAWING STATUS
CONTRACT

CLIENT
SHAFTESBURY ESTATES

PROJECT
57 MONMOUTH STREET
4 CHING COURT
LONDON
WC2H 9EY

TITLE
FIRST FLOOR
GENERAL ARRANGEMENT PLAN

SCALE	1:20@ A1
DATE	19.07.18
DRAWN	SO
CHECKED	GW

PROJECT NO	BLDG.	FLOOR	DETAIL	REV.
AR23774	2	1	GA	-

BLUE STATUS

DRAWING APPROVED FOR CONTRACT