

Facade Scope Legend

CURTAIN WALL SYSTEMS

UNITISED CURTAIN WALL SYSTEMS

- EWS-250

Floor to floor curtain wall system with screen and access way. Internal blind and openable outer screen
- EWS-225

Floor to floor curtain wall system fixed to face of slab with interstitial blinds.
- IWS-200

Internal curtain wall system. As EWS-250, without screen and access way.
- EWS-200

Curtain wall system. As EWS-250 but without access way.
- EWS-700

Curtain wall system spanning floor to soffit with interstitial blinds and external doors. EWS-700 to lightwells to incorporate obscure glazing instead of interstitial blinds.
- IWS-300

Internal curtain wall system. As EWS-700 but internal with integrated doors.
- IWS-350

Internal curtain wall system. As IWS-300 but incorporating back painted glazing instead of interstitial blinds.
- IWS-360

Internal curtain wall system. As IWS-350 but clear instead of back painted, and with integrated doors.

STICK CURTAIN WALL SYSTEMS

- EWS-300

Curtain wall with 'T' shaped aluminum mullion system with walkway, integrated louvre panels concealed frame glass doors and louvre parapet. Glazing to level 5 g/ 8H back painted.
- EWS-100

Curtain wall with 'T' shaped steel or aluminium or aluminium frame system.
- IWS-100

Curtain wall with 'T' shaped steel or aluminium frame as EWS-100 but internal.
- EWS-500

Curtain wall with external 'T' shape steel or aluminium frame system and ventilation panels at ground floor level.
- EWS-550

Curtain wall with external 'T' shape steel or aluminium frame system as EWS-500 but with external brise soleil and integrated doors.
- EWS-400

Aluminium curtain wall with re-inforced frames. Includes roller blind,insulated aluminium spandrel panels and integrated doors.

NON-ALUMINIUM CLADDING

- EWS-600

Pre-cast concrete cladding system. (GRC)
- EWS-650

Pre-cast concrete soffit/ fascia panels. (GRC)
- EWS-650A

Acoustic soffit insert panels. Hardwood panels with integrated services and lights.
- EWS-750

Pre-cast unitised concrete cladding with aluminium feature frame.(GRC)

RAINSCREEN SYSTEMS

- EWS-450

Aluminium rainscreen cladding to steel frame with PV panels/louvres/standing seam cladding with external walkway and access.
- EWS-800

PPC aluminium rainscreen cladding to suit structural framing system (SFS) backing wall.
- IWS-800

Internal aluminium panel cladding to suit SFS backing wall.
- EWS-810

Aluminium rainscreen cladding to suit concrete backing wall.
- EWS-820

Aluminium rainscreen ductwork cladding to steel frame.
- EWS-850

PPC Aluminium insulated Spandrel Panels to suit SFS backing wall.

LOUVRE PANEL SYSTEMS

- EWS-151

Open and closed louvre system with integrated concealed frame doors and windows.

BRISE SOLEIL VEIL SYSTEMS

- EWS-250

Brise soleil shading system.
- EWS-700A

Brise soleil shading system.
- EWS-550A

Brise soleil shading system.

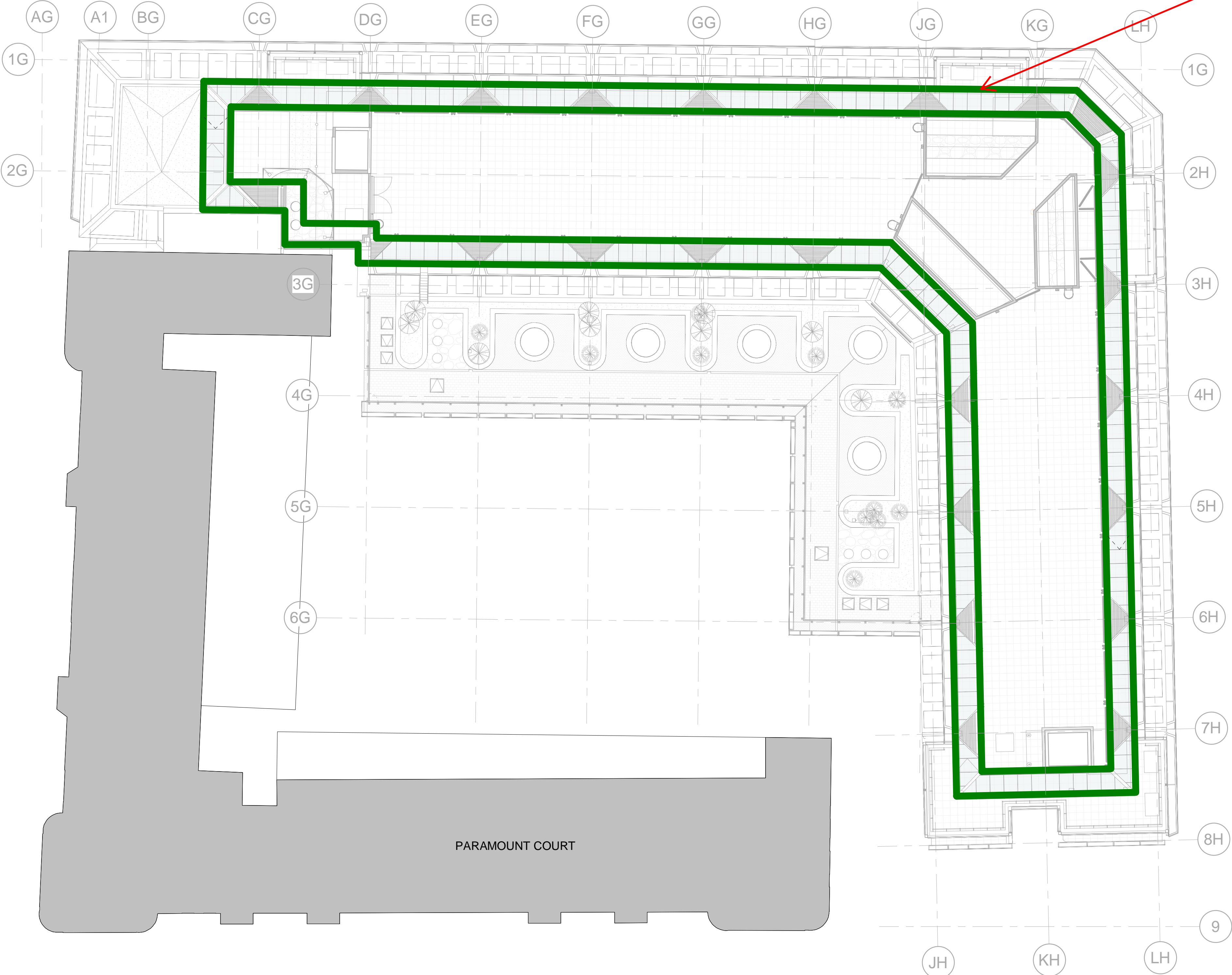
BALUSTRADING

- BAR-004

Ext anti-climb glazed balustrading.
- EXT-008

Ext aluminium roof planter with balustrade.
- CAN-001

Ext. Glass canopy.
- PPC aluminium cladding to close off party wall void.



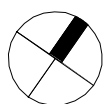
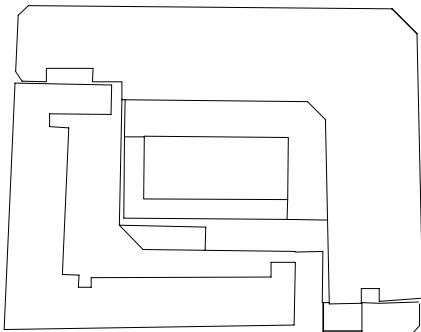
SCOPE OF PHOTOVOLTAIC PANELS SHOWN IN GREEN.

SEE FACADE SUBCONTRACTORS DRAWINGS FOR MORE DETAILED INFORMATION.

DRAWING SUBMITTED TO SUPPORT THE DICHARGE OF PLANNING CONDITION 16.

STW 17/08/2018

NOTES:



ALL REVISIONS

G	08/12/17	STAGE F ISSUE	STW	STW	BYUK	BYUK
F	2016.11.11	100% Stage E issue.	RM	RM	BYUK	BYUK
E	18/07/16	Issued For Facade Tender	STW	RM	KB	KB
D	2016.07.06	Issued For Facade Tender	BB	RM	KB	KB
C	03/06/16	Issued for 50% facade package review	STW	DW	RM	KB
B	22/04/16	Curtain wall scope legend updated for clarity.	STW	DW	RM	KB
A	14/12/15	Preliminary issue.	STW	DW	RM	KB
Re	DATE	REVISION HISTORY	Dsg	Drw	Chk	App
v						



Head Office:  
Elizabeth House,  
39 York Road,  
London, SE1 7NQ.  
Tel:020 7401 0020  
Fax:020 7401 0030

www.bouygues-uk.com

University College London Hospitals NHS Foundation Trust

Name	Signature	Date
Designed by	STW	2017.12.08
Drawn by	RM	2017.12.08
Checked	KB	2017.12.08
Approved	KB	2017.12.08

ORIGINATOR  
Scott Tallon Walker Architects  
NG Bailey CampbellReith

SCALE	@ A1	BIM FILE NAME
1 : 200		P4PBT-STW-AAG-SL-M3-A31-100060
FIRST ISSUE DATE	14.12.2015	PROPOSED STATUS
		S4 - Issued for stage approval



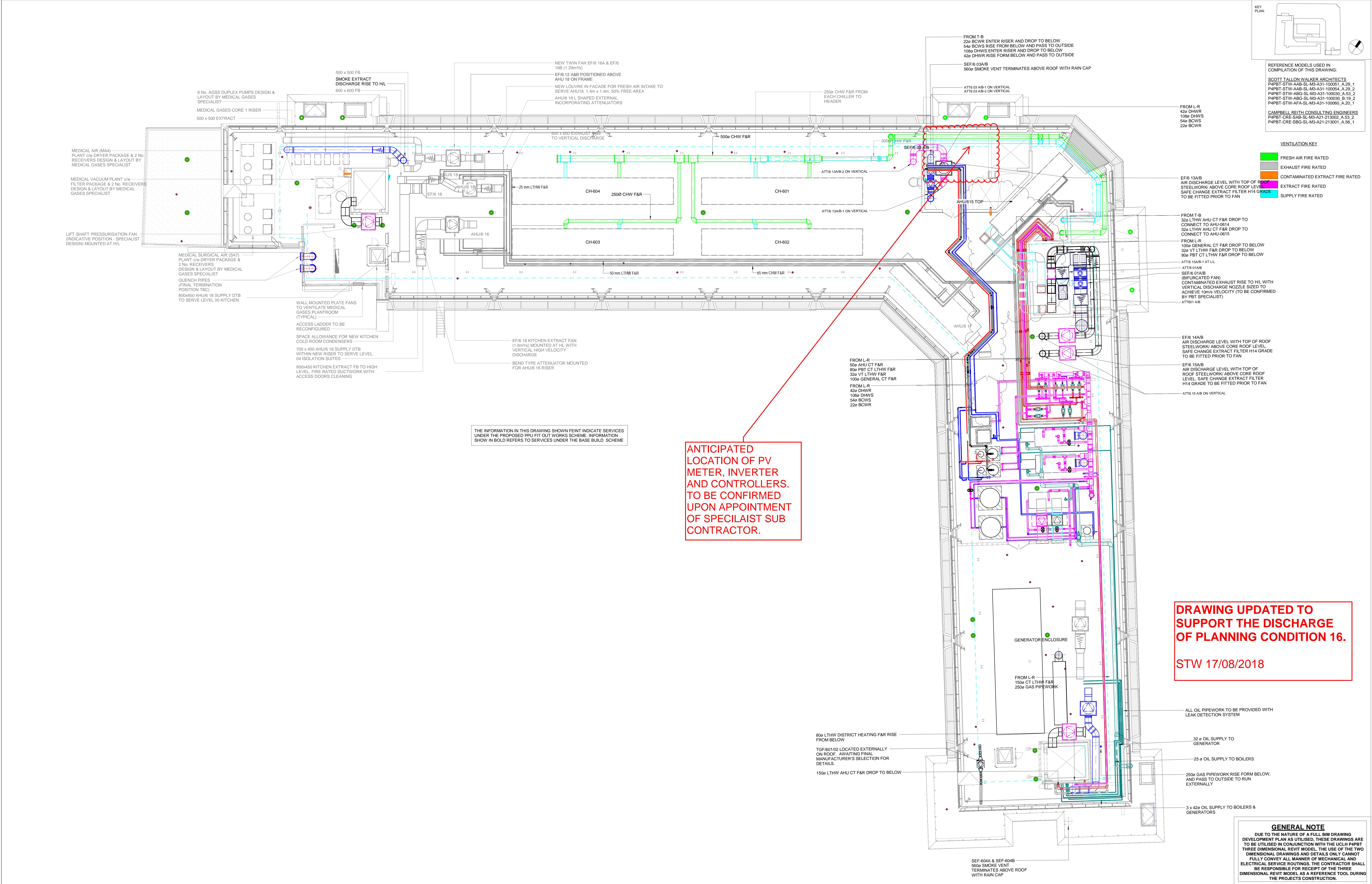
DRAWING TITLE

Proton Beam Therapy - Phase 4

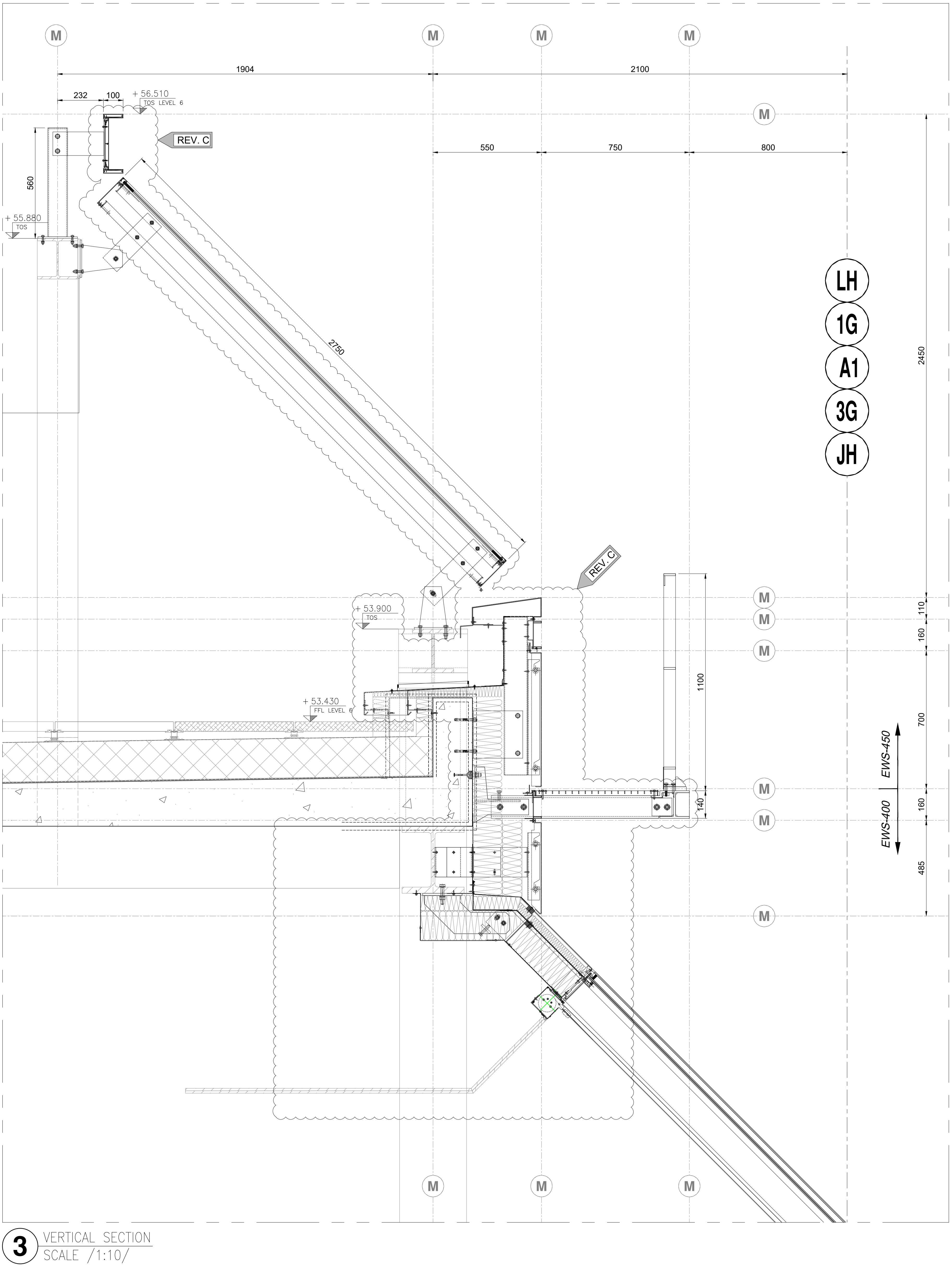
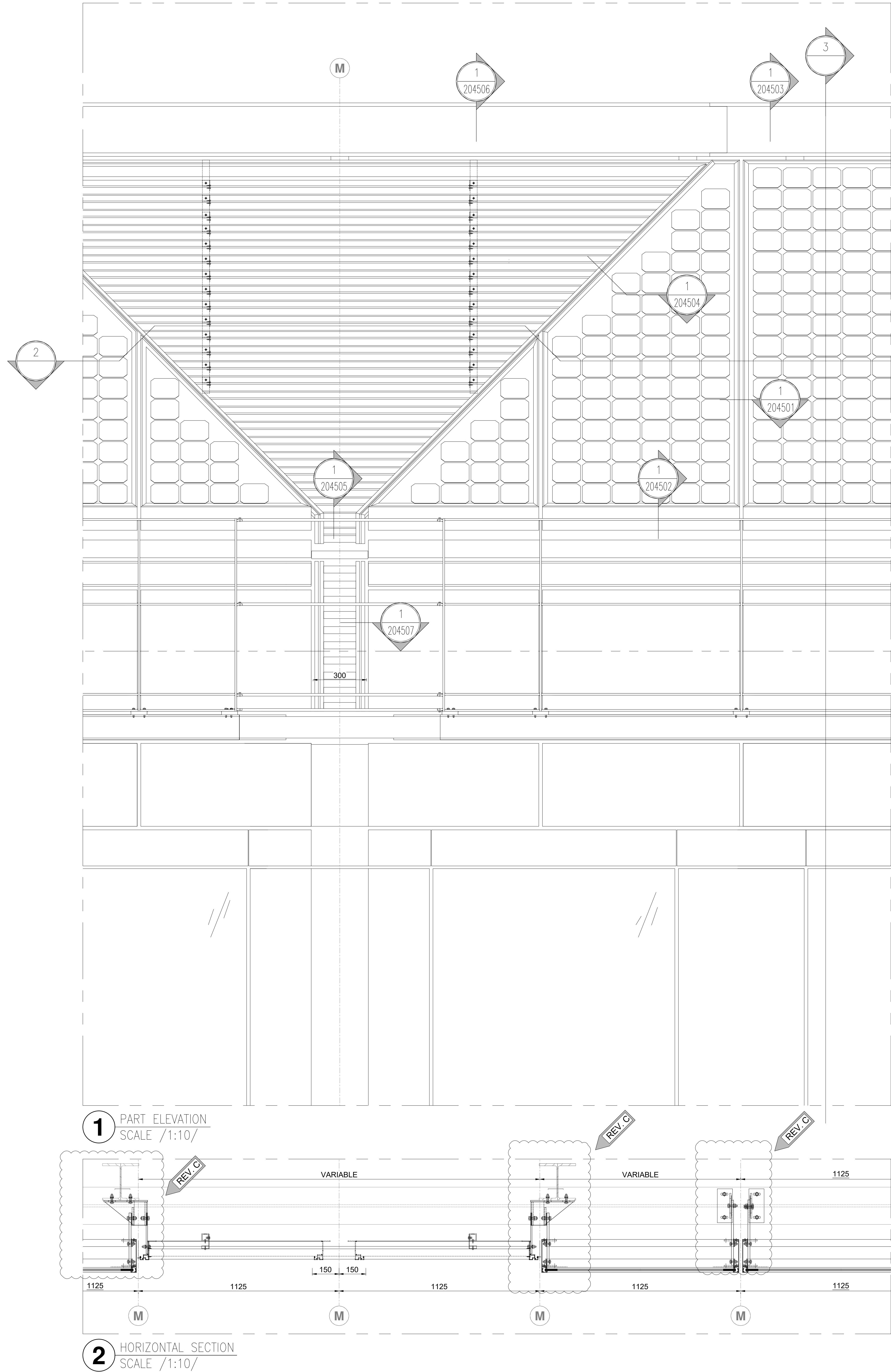
External Envelope Scope Plans - Roof Floor Level

PROJECT	ISSUER	AREA	LEVEL	TYPE	TRADE	SEQUENCE	REV
P4PBT	STW	AFA	RF	SOW	A31	137140	G









Interface with steel to be revised once conclusion about movements, tolerances and intumescent paint expansion zone is provided.

LAYOUTS FOR PV CELLS TO BE DEVELOPED BY SUPPLIER

C	20.07.18	REVISED AS CLOUED	AP	AW	WA	GK
B	11.04.18	REVISED AS CLOUED	AP	AP	AP	GK
A	27.09.17	FIRST ISSUE	AK	AK	AK	GK
Rev	DATE	REVISION HISTORY	Des	Drw	CHK	App

Head Office:  
Rynek Główny  
38-100 Kraków  
tel. 012 255 10 00  
fax 012 255 10 01  
www.kyotec.pl

CLIENT LOGO

University College London Hospitals

KEY PLAN

PROJECT IMAGE

ORIGINATOR

KYOTEC POLSKA  
MEMBER OF KYOTEC GROUP

DRAWING TITLE

UCLH Phase 4 & PBT

Partial elevation EWS-450

Name	Signature	Date
Designed by Artur Kociaszewski		27.09.2017
Drawn by Artur Kociaszewski		27.09.2017
Checked Artur Kociaszewski		27.09.2017
Approved Grzegorz Kolodziej		27.09.2017

SCALE	@ A0	BIM FILE NAME
1:10		P4PBT-KYO-ALL-06-ELV-3.01-104501
FIRST ISSUE DATE	PROPOSED STATUS	
27.09.2017	S3	

PROJECT	ISSUER	AREA	LEVEL	TYPE	TRADE	SEQUENCE	REV
P4PBT	KYO	ALL	06	ELV	3.01	104501	C