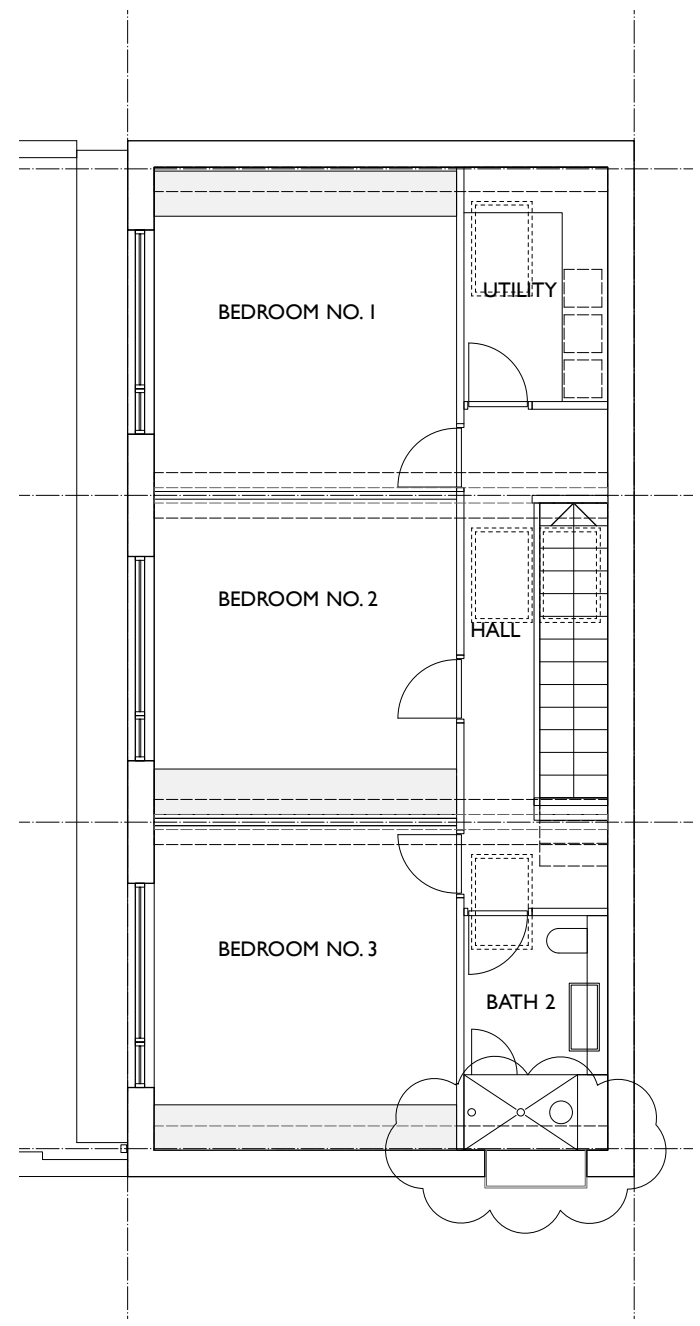


01 GROUND FLOOR PLAN AMENDMENT



02 FIRST FLOOR PLAN AMENDMENT



Mador & Partners Chartered Architects Ltd.

Studio 102
1 Thane Villas
London N7 7PH

telephone 0207 281 5550
fax 0207 272 3959

PLANNING

| | | |
|--------------------------------|-----------|-----------------|
| 11 Rochester Mews | | Project |
| Proposed House Plans Amendment | | Drawing |
| 1:50 at A1 | scale | August 2018 |
| 1:100 at A3 | date | |
| 172 | job P-25a | no. revision LB |
| | | drawn |