

ALL REVISIONS									
Rev	DATE	REVISION HISTORY	Dsg	Drw	Chk	App	SL	RM	KB
C	15/08/16	Revised 90% issue in response to comments.	STW	RM	KB	KB			
B	18/07/16	Issued For Facade Tender	STW	SL	RM	KB			
A	06/07/16	Issued For Facade Tender	STW	MB	RM	KB			

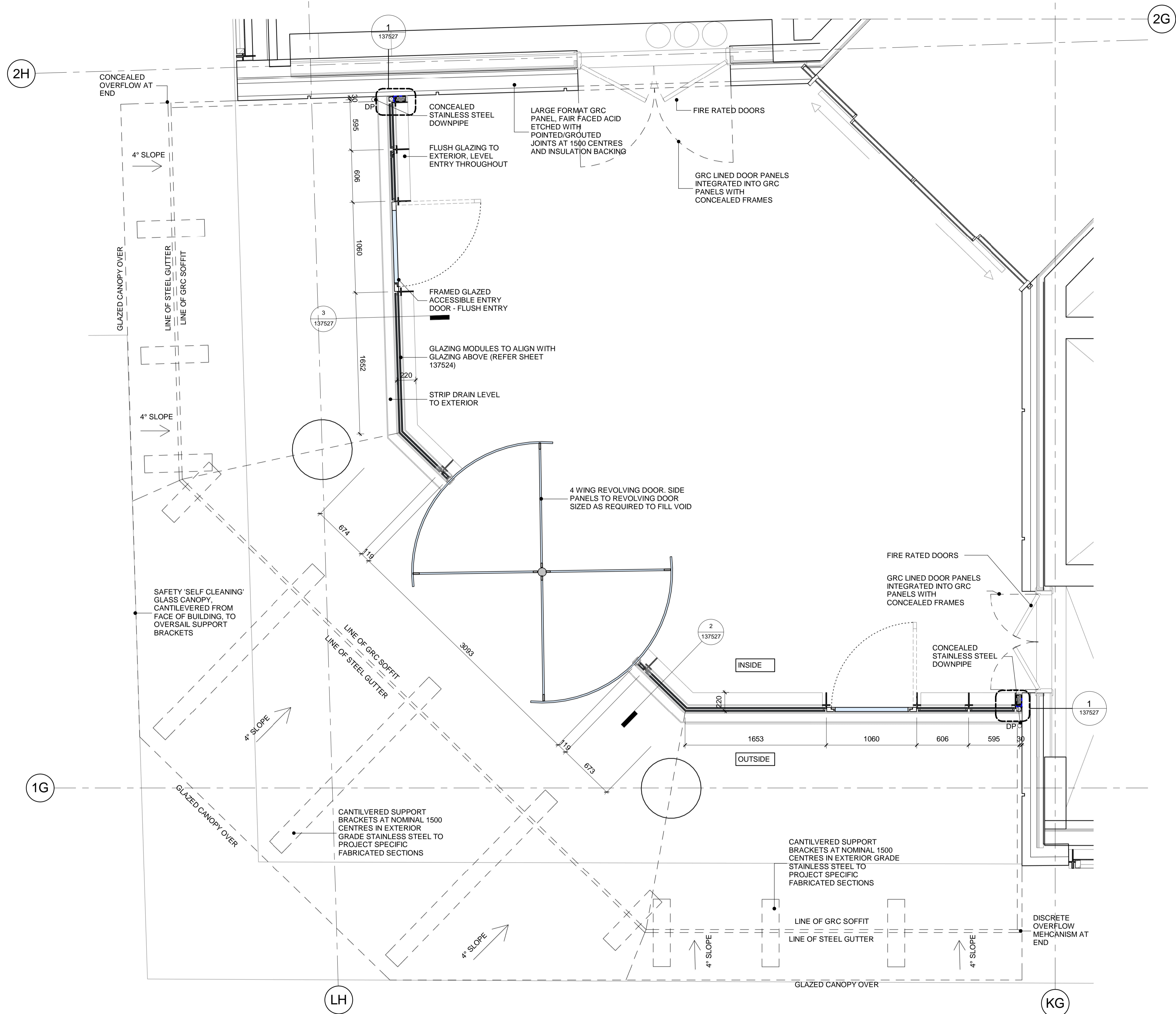


**BOUYGUES**  
Head Office:  
Elizabeth House,  
39 York Road,  
London, SE1 7NQ.  
Tel: 020 7401 0020  
Fax: 020 7401 0030  
www.bouygues-uk.com

University College London Hospitals NHS Foundation Trust			
Name	Signature	Date	
Designed by	STW	15/08/16	
Drawn by	SL	15/08/16	
Checked	RM	15/08/16	
Approved	KB	15/08/16	

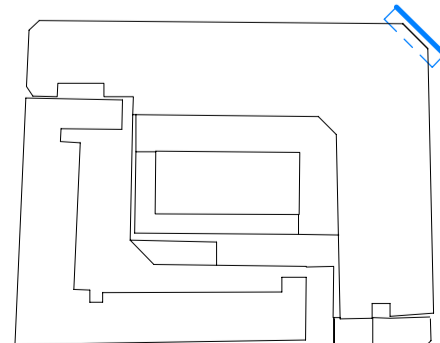
ORIGINATOR		SCALES		BIM FILE NAME	
Scott Tallon Walker Architects		As indicated		P4PBT-STW-AAG-SL-M3-A31-100060	
NG Bailey CampbellReith		FIRST ISSUE DATE		PROPOSED STATUS	
VARIAN medical systems		2016.07.06		For Procurement	

DRAWING TITLE									
UCLH Phase 4 & PBT									
TYPICAL ADMIN CURTAIN WALL - ABOVE CORNER ENTRANCE (EWS-225)									
PROJECT	ISSUER	AREA	LEVEL	TYPE	TRADE	SEQUENCE	REV		
P4PBT	STW	AAB	SL	DET	A31	137525	C		



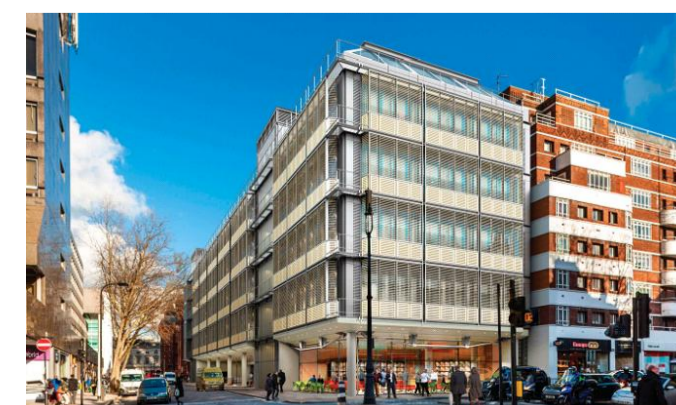
1 ENTRANCE CORNER PLAN  
1:25

NOTES:



ALL REVISIONS

Rev	DATE	REVISION HISTORY	Dsg	Drw	Chk	App
C	11.11.16	100% Stage E issue.	STW	SL	RM	KB
B	18/07/16	Issued For Facade Tender	STW	SL	RM	KB
A	06/07/16	Issued For Facade Tender	STW	SL	RM	KB

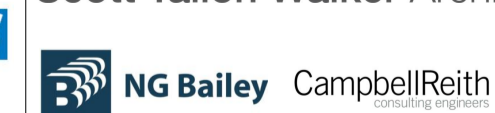


Head Office:  
Elizabeth House,  
39 York Road,  
London, SE1 7NQ.  
Tel: 020 7401 0020  
Fax: 020 7401 0030  
www.bouygues-uk.com

University College London Hospitals NHS Foundation Trust

Name	Signature	Date
Designed by	STW	11.11.16
Drawn by	SL	11.11.16
Checked	RM	11.11.16
Approved	KB	11.11.16

ORIGINATOR  
Scott Tallon Walker Architects



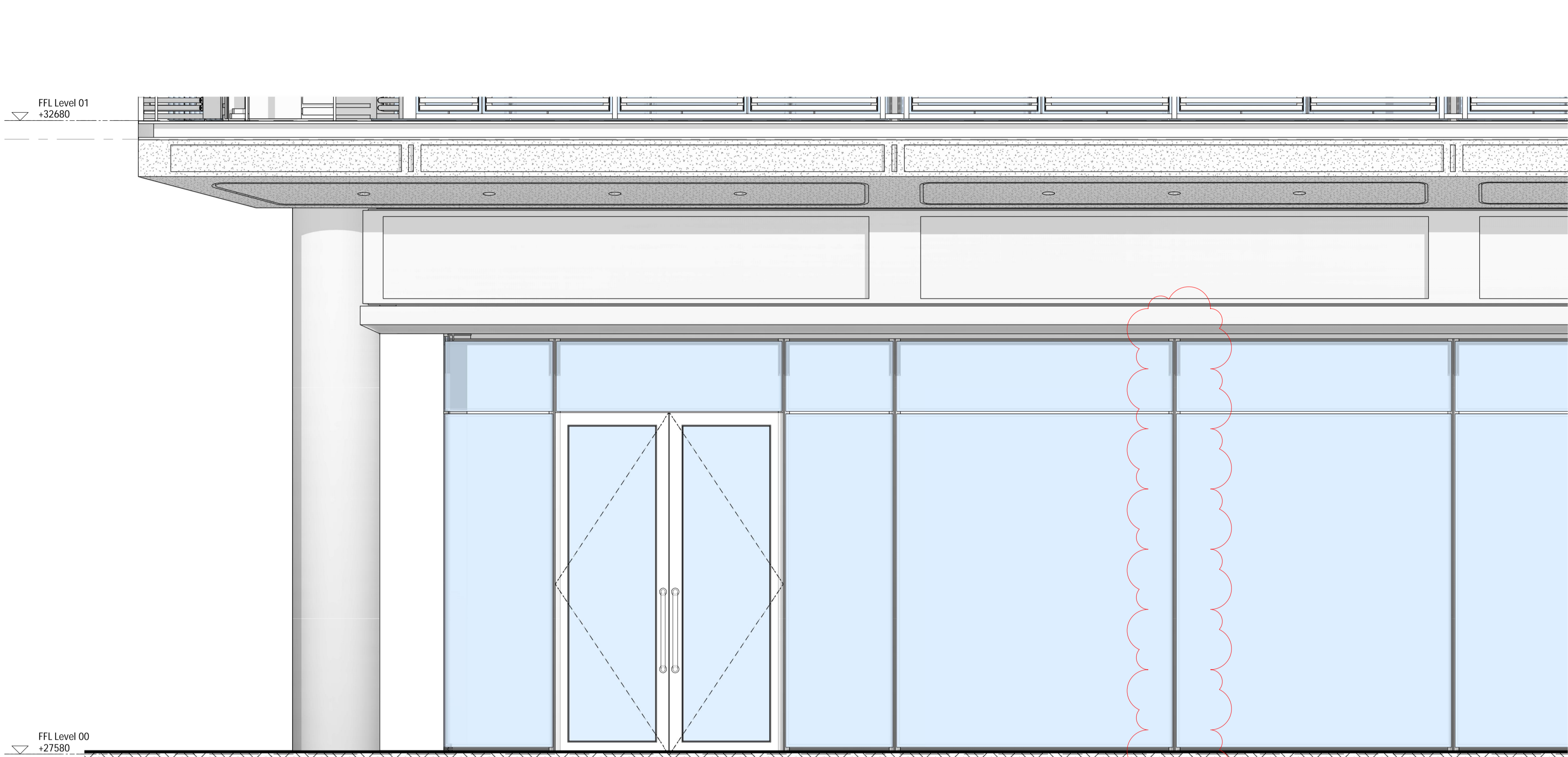
SCALE	@ A1	BIM FILE NAME
1 : 25		P4PBT-STW-AAG-SL-M3-A31-100060
FIRST ISSUE DATE	PROPOSED STATUS	
2016.07.06	For Procurement	

DRAWING TITLE

UCLH Phase 4 & PBT  
ENTRANCE CORNER PLAN (EWS-100)

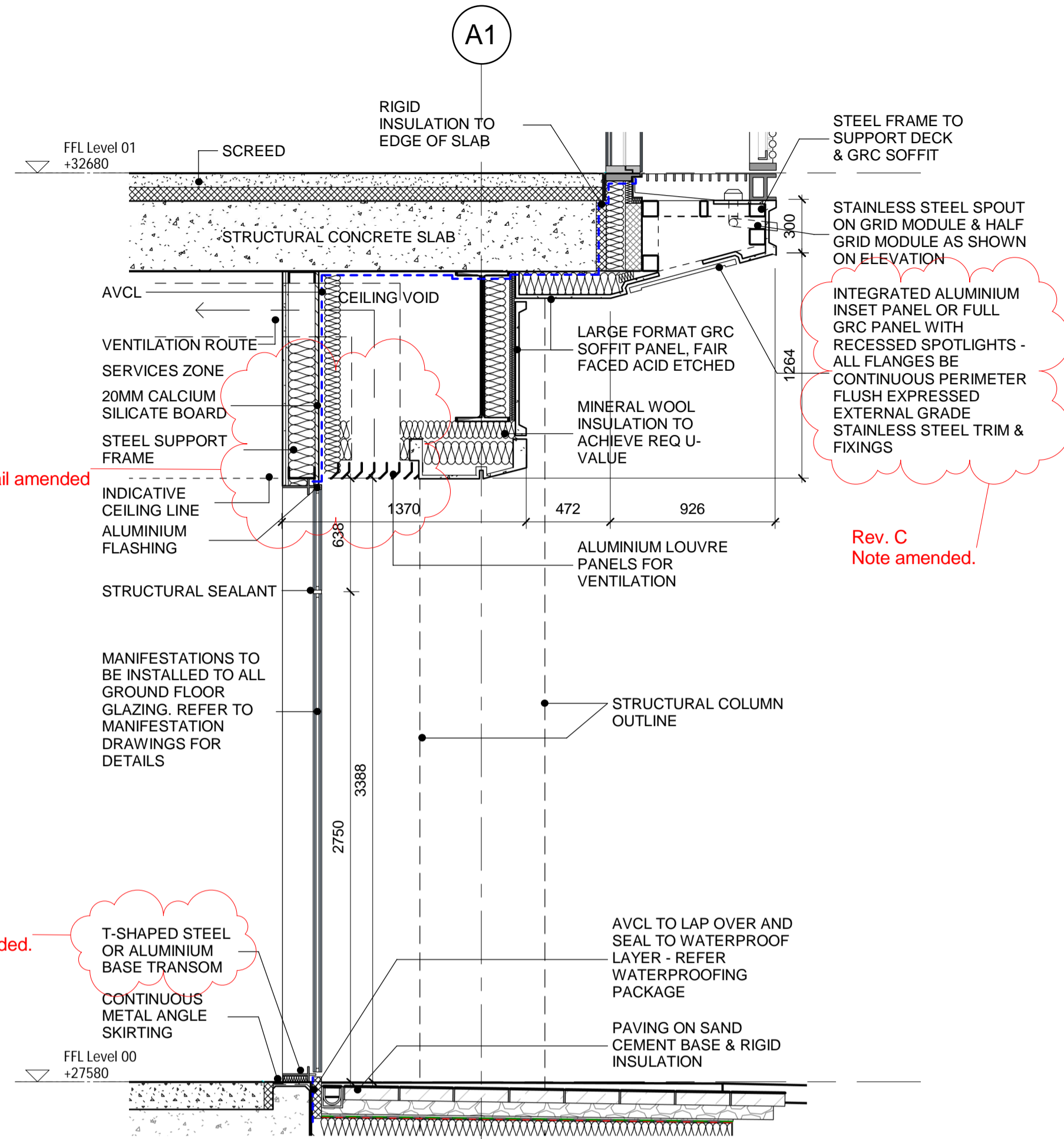
PROJECT	ISSUER	AREA	LEVEL	TYPE	TRADE	SEQUENCE	REV
P4PBT	STW	AAB	SL	DET	A31	137526	C





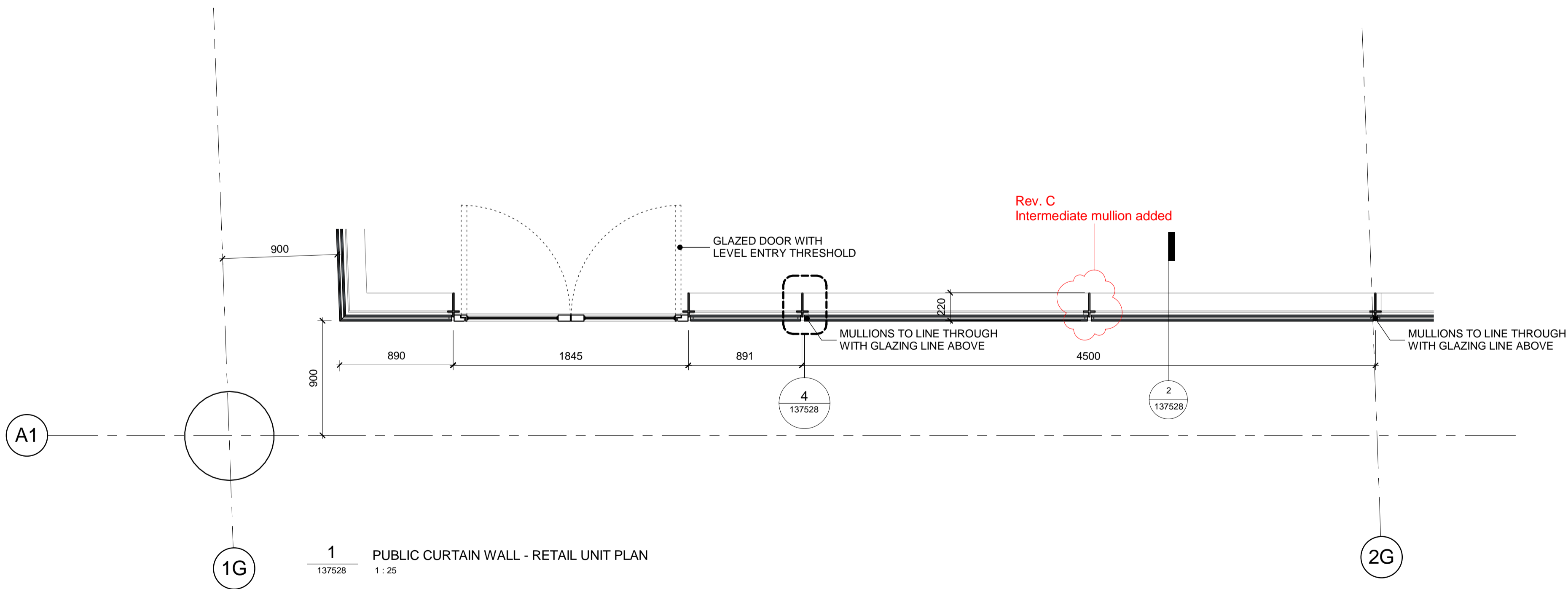
3 137528 - ELEVATION  
137528 1:25

Rev. C  
Intermediate mullion added

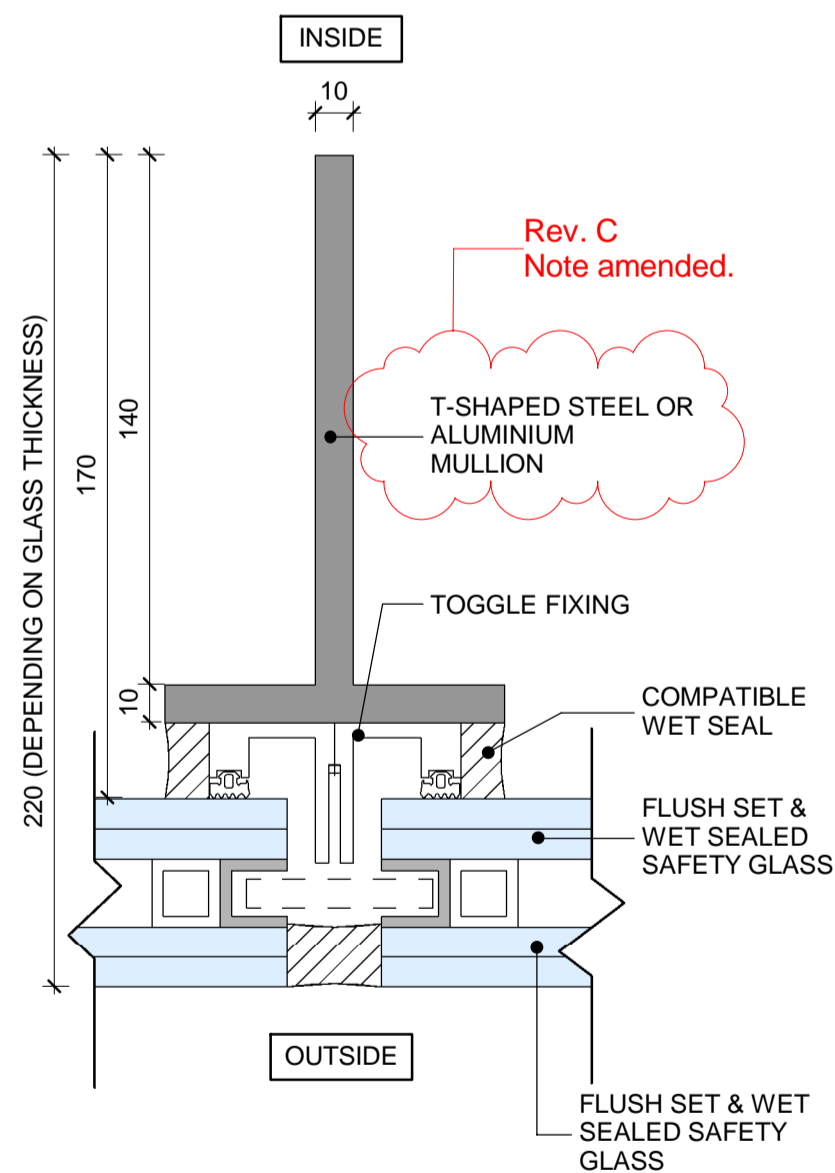


2 137528 - SECTION  
137528 1:25

Rev. C  
Note amended.



1 PUBLIC CURTAIN WALL - RETAIL UNIT PLAN  
137528 1:25



4 137528 - PLAN - DETAIL  
137528 1:2

Rev. C  
Note amended.

NOTES:



ALL REVISIONS

Rev	DATE	REVISION HISTORY	Dsg	Drw	Chk	App
C	11.11.16	100% Stage E issue.	STW	SL	RM	KB
B	18/07/16	Issued For Facade Tender	STW	SL	RM	KB
A	06/07/16	Issued For Facade Tender	STW	SL	RM	KB



Head Office:  
Elizabeth House,  
39 York Road,  
London, SE1 7NQ.  
Tel: 020 7401 0020  
Fax: 020 7401 0030  
www.bouygues-uk.com

University College London Hospitals NHS Foundation Trust

Name	Signature	Date
Designed by	STW	11.11.16
Drawn by	SL	11.11.16
Checked	RM	11.11.16
Approved	KB	11.11.16

ORIGINATOR  
Scott Tallon Walker Architects



SCALE  
As indicated

FIRST ISSUE DATE  
2016.07.06



BIM FILE NAME  
P4PBT-STW-AAG-SL-M3-A31-100060

PROPOSED STATUS  
For Procurement

DRAWING TITLE

UCLH Phase 4 & PBT  
TYPICAL PUBLIC CURTAIN WALL - RETAIL CORNER (EWS-100)

PROJECT	ISSUER	AREA	LEVEL	TYPE	TRADE	SEQUENCE	REV
P4PBT	STW	AAB	SL	DET	A31	137528	C