

NOTES:



ALL REVISIONS

Rev	DATE	REVISION HISTORY	Dsg	Drw	Chk	App
E	11.11.16	100% Stage E issue.	STW	SL	RM	KB
D	15/08/16	Revised 90% issue in response to comments.	STW	RM	KB	KB
C	18/07/16	Issued For Facade Tender	STW	MB	RM	KB
B	06/07/16	Issued For Facade Tender	STW	MB	RM	KB
A	03/06/16	Issued for 50% facade package review	STW	MB	RM	KB



BOUYGUES
Head Office:
Elizabeth House,
39 York Road,
London, SE1 7NQ.
Tel: 020 7401 0020
Fax: 020 7401 0030
www.bouygues-uk.com

University College London Hospitals NHS Foundation Trust

Name	Signature	Date
Designed by	STW	11.11.16
Drawn by	SL	11.11.16
Checked	RM	11.11.16
Approved	KB	11.11.16

ORIGINATOR
Scott Tallon Walker Architects

NG Bailey CampbellReith

VARIAN medical systems Particle Therapy

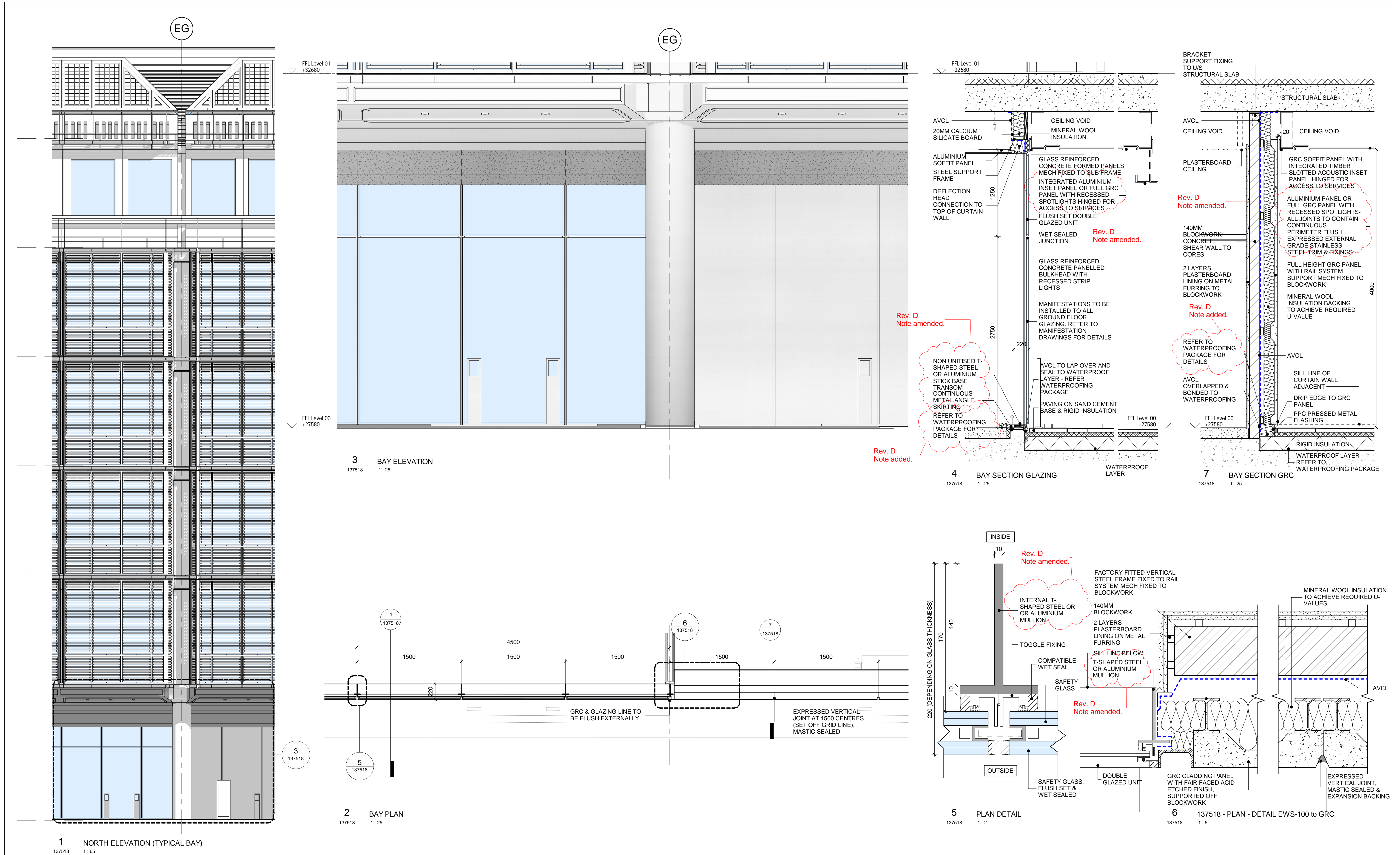
SCALE: As indicated @ A1
FIRST ISSUE DATE: 2016.06.03
PROPOSED STATUS: For Procurement

DRAWING TITLE

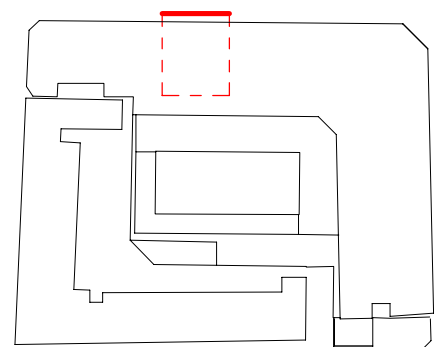
UCLH Phase 4 & PBT

TYPICAL PUBLIC CURTAIN WALL - CORES (EWS-300)

PROJECT	ISSUER	AREA	LEVEL	TYPE	TRADE	SEQUENCE	REV
P4PBT	STW	AAB	SL	DET	A31	137517	E



NOTES:



ALL REVISIONS

Rev	DATE	REVISION HISTORY	Dsg	Drw	Chk	App
D	11.11.16	100% Stage E issue.	STW	SL	RM	KB
C	18/07/16	Issued For Facade Tender	STW	SL	RM	KB
B	06/07/16	Issued For Facade Tender	STW	SL	RM	KB
A	03/06/16	Issued for 50% facade package review	STW	SL	RM	KB



BOUYGUES
Head Office:
Elizabeth House,
39 York Road,
London, SE1 7NQ.
Tel: 020 7401 0020
Fax: 020 7401 0030
www.bouygues-uk.com

University College London Hospitals **NHS**
NHS Foundation Trust

Name	Signature	Date
Designed by	STW	11.11.16
Drawn by	SL	11.11.16
Checked	RM	11.11.16
Approved	KB	11.11.16

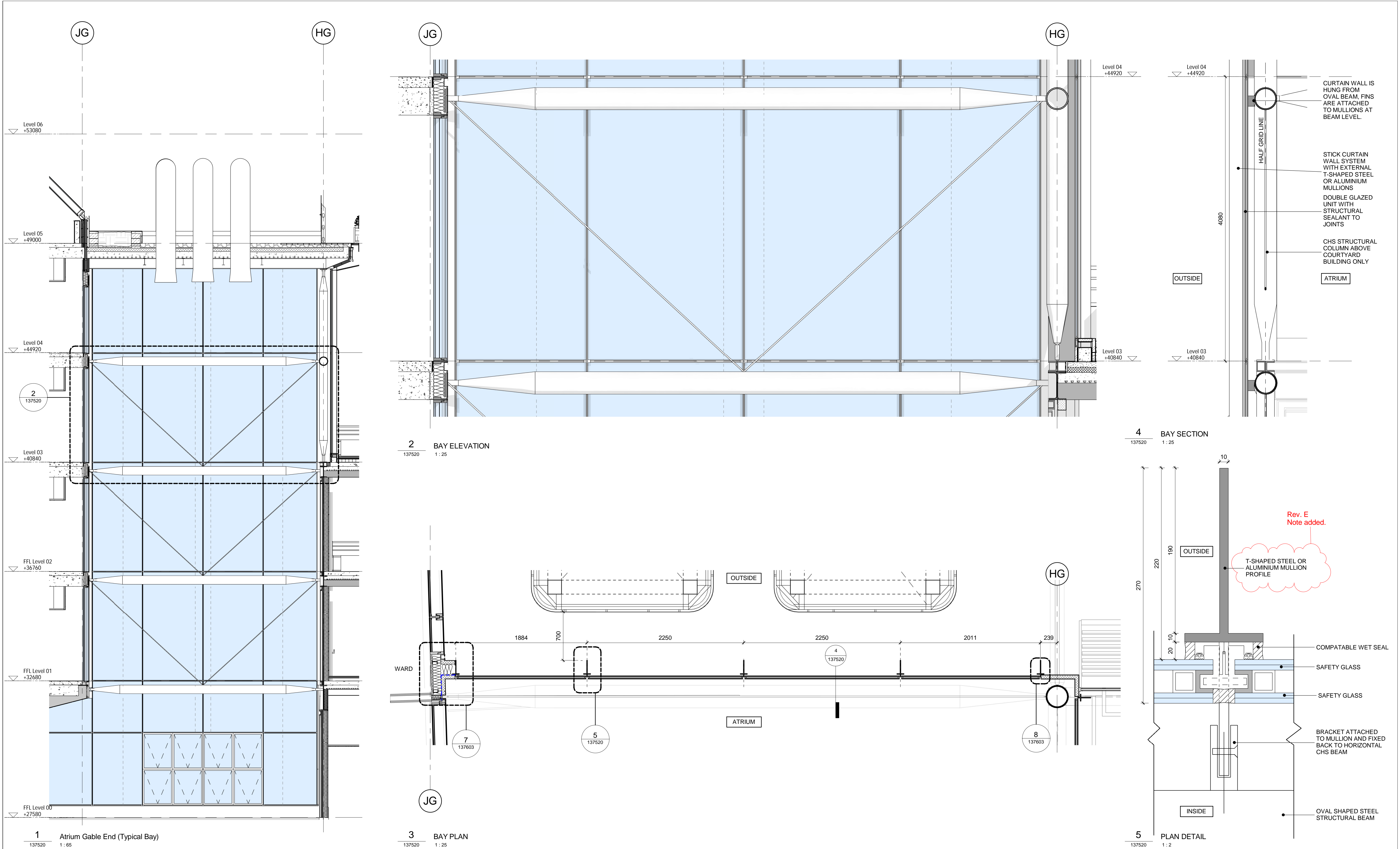
ORIGINATOR
Scott Tallon Walker Architects
NG Bailey CampbellReith

SCALE	@ A1	BIM FILE NAME
As indicated		P4PBT-STW-AAG-SL-M3-A31-100060
FIRST ISSUE DATE		2016.06.03
PROPOSED STATUS		For Procurement

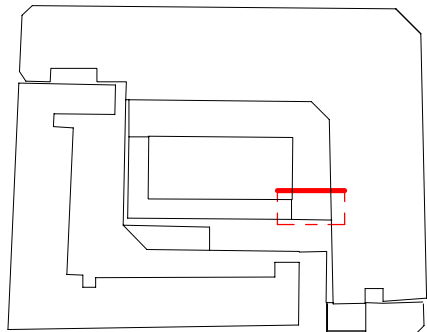


DRAWING TITLE

UCLH Phase 4 & PBT						
TYPICAL PUBLIC CURTAIN WALL - DROP-OFF AREA (EWS-100)						
PROJECT	ISSUER	AREA	LEVEL	TYPE	TRADE	SEQUENCE
P4PBT	STW	AAB	SL	DET	A31	137518 D



NOTES:



ALL REVISIONS

Rev	DATE	REVISION HISTORY	Dsg	Drw	Chk	App
E	11.11.16	100% Stage E issue.	STW	SL	RM	KB
D	15/08/16	Revised 90% issue in response to comments.	STW	RM	KB	KB
C	18/07/16	Issued For Facade Tender	STW	DW	RM	KB
B	06/07/16	Issued For Facade Tender	STW	DW	RM	KB
A	03/06/16	Issued for 50% facade package review	STW	DW	RM	KB



Head Office:
Elizabeth House,
39 York Road,
London, SE1 7NQ.
Tel: 020 7401 0020
Fax: 020 7401 0030
www.bouygues-uk.com

University College London Hospitals NHS Foundation Trust

Name	Signature	Date
Designed by	STW	11.11.16
Drawn by	SL	11.11.16
Checked	RM	11.11.16
Approved	KB	11.11.16

ORIGINATOR
Scott Tallon Walker Architects
NG Bailey CampbellReith

SCALE	@ A1	BIM FILE NAME
As indicated		P4PBT-STW-AAG-SL-M3-A31-100060
FIRST ISSUE DATE	2016.06.03	PROPOSED STATUS
		For Procurement



DRAWING TITLE

UCLH Phase 4 & PBT
TYPICAL PUBLIC CURTAIN WALL - ATRIUM
GABLE ENDS (EWS-500)

PROJECT	ISSUER	AREA	LEVEL	TYPE	TRADE	SEQUENCE	REV
P4PBT	STW	AAB	SL	DET	A31	137520	E

1 Atrium - Courtyard (Typical Bay)
137521 1 : 65

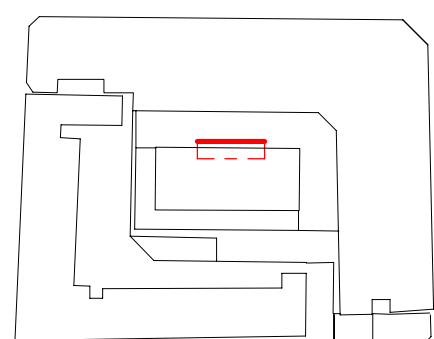
2 BAY ELEVATION
137521 1 : 25

Rev. D
Detail amended for clarity

4 BAY SECTION
137521 1 : 25

5 PLAN DETAIL
137521 1 : 2

NOTES:



ALL REVISIONS

D	11.11.16	100% Stage E issue.	STW	SL	RM	KB
C	18/07/16	Issued For Facade Tender	STW	DW	RM	KB
B	06/07/16	Issued For Facade Tender	STW	DW	RM	KB
A	03/06/16	Issued for 50% facade package review	STW	DW	RM	KB
Rev	DATE	REVISION HISTORY	Dsq	Drw	Chk	App



Head Office:
Elizabeth House,
39 York Road,
London, SE1 7NQ.
Tel:020 7401 0020
Fax:020 7401 0030
www.bouygues-uk.com

University College London Hospitals 
NHS Foundation Trust

	Name	Signature	Date
Designed by	STW		11.11.16
Drawn by	SL		11.11.16
Checked	RM		11.11.16
Approved	KB		11.11.16

ORIGINATOR	
------------	--

Scott Tallon Walker Architects



VARIAN | Particle Therapy

SCALE	@ A1
-------	------

As indicated

FIRST ISSUE DATE	2016.06.03
------------------	------------

1	BIM FILE NAME
---	---------------

P4PBT-STW-AAG-SL-M3-A31-10006

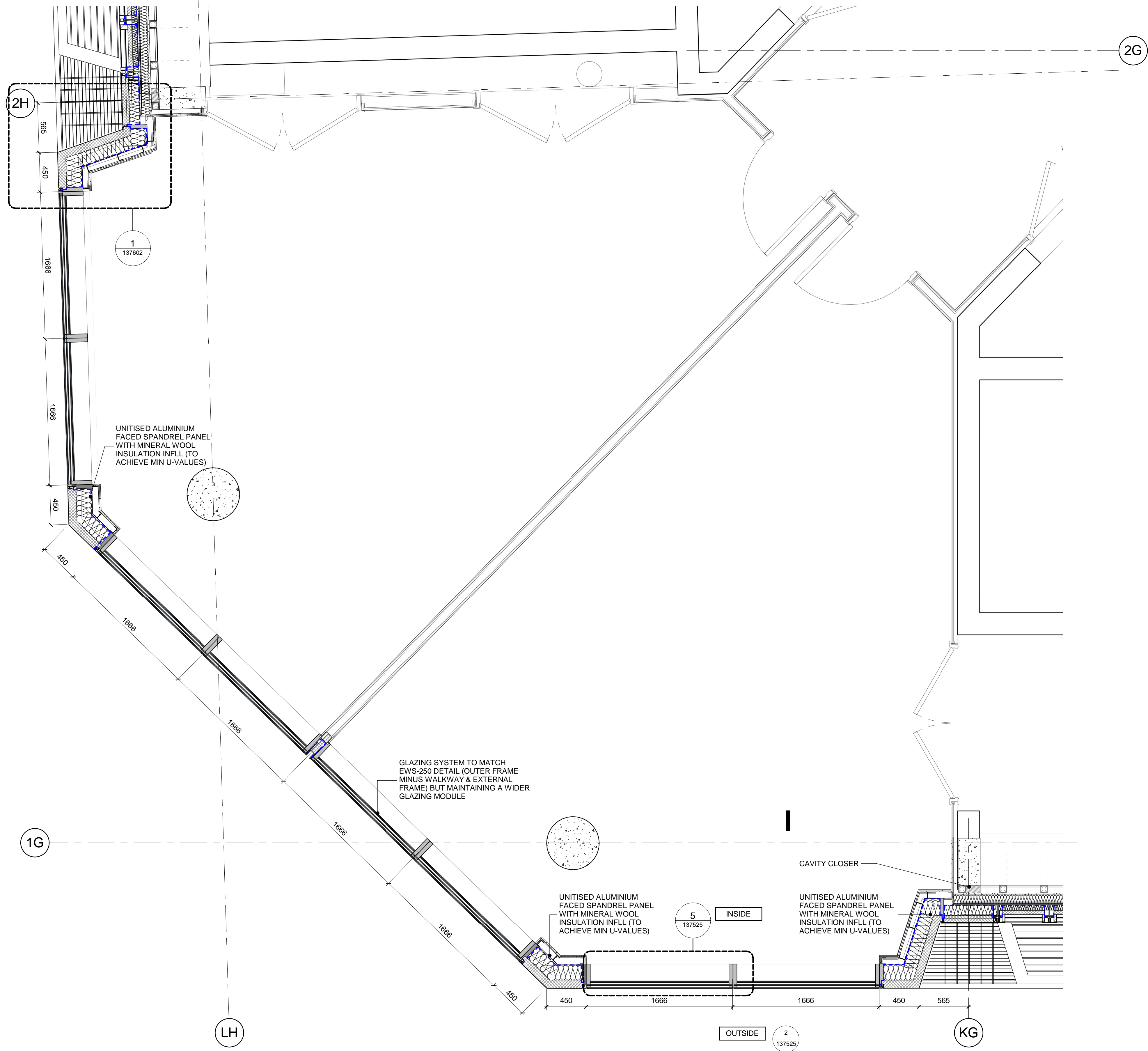
PROPOSED STATUS	For Procurement
-----------------	-----------------

	DRAWING TITLE
--	---------------

UCLH Phase 4 & PBT

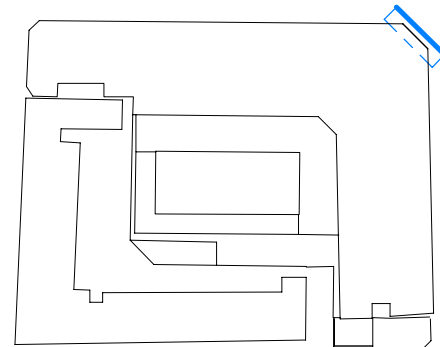
TYPICAL CURTAIN WALL - ATRIUM OVER
COURTYARD BUILDING (EWS-550)

PROJECT	ISSUER	AREA	LEVEL	TYPE	TRADE	SEQUENCE	REVISION
P4PBT	STW	AAB	SL	DET	A31	137521	D



1 137524 - PLAN
137524 1 : 25

NOTES:



ALL REVISIONS

Rev	DATE	REVISION HISTORY	Dsg	Drw	Chk	App
C	11.11.16	100% Stage E issue.	STW	SL	RM	KB
B	18/07/16	Issued For Facade Tender	STW	SL	RM	KB
A	06/07/16	Issued For Facade Tender	STW	SL	RM	KB



Head Office:
Elizabeth House,
39 York Road,
London, SE1 7NQ.
Tel: 020 7401 0020
Fax: 020 7401 0030
www.bouygues-uk.com

University College London Hospitals NHS Foundation Trust

Name	Signature	Date
Designed by	STW	11.11.16
Drawn by	SL	11.11.16
Checked	RM	11.11.16
Approved	KB	11.11.16

ORIGINATOR
Scott Tallon Walker Architects
NG Bailey CampbellReith

SCALE	@ A1	BIM FILE NAME
1 : 25		P4PBT-STW-AAG-SL-M3-A31-100060
FIRST ISSUE DATE	PROPOSED STATUS	
2016.07.06	For Procurement	



DRAWING TITLE

UCLH Phase 4 & PBT
LEVELS 01-04 ABOVE ENTRANCE CORNER
PLAN (EWS-225)

PROJECT	ISSUER	AREA	LEVEL	TYPE	TRADE	SEQUENCE	REV
P4PBT	STW	AAB	SL	DET	A31	137524	C