

NOTES:

ALL REVISIONS

Rev	DATE	REVISION HISTORY	Dsg	Drw	Chk	App
D	11.11.16	100% Stage E issue.	STW	SL	RM	KB
C	18/07/16	Issued For Facade Tender	STW	MB	RM	KB
B	06/07/16	Issued For Facade Tender	STW	MB	RM	KB
A	03/06/16	Issued for 50% facade package review	STW	MB	RM	KB



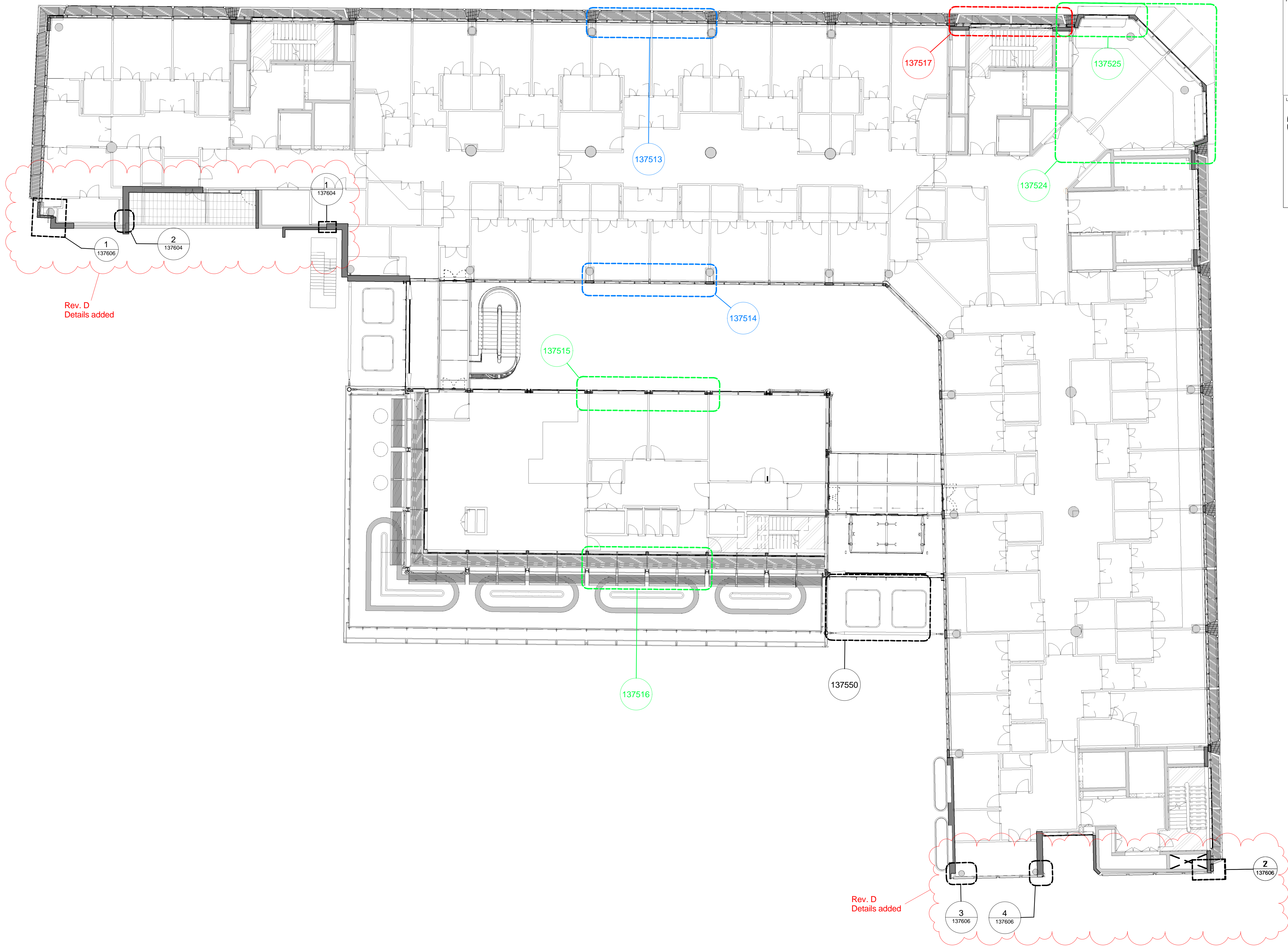
Head Office:
Elizabeth House,
39 York Road,
London, SE1 7NQ.
Tel: 020 7401 0020
Fax: 020 7401 0030
www.bouygues-uk.com

University College London Hospitals **NHS**
NHS Foundation Trust

	Name	Signature	Date
Designed by	STW		11.11.16
Drawn by	SL		11.11.16
Checked	RM		11.11.16
Approved	KB		11.11.16

ORIGINATOR Scott Tallon Walker Architects	SCALE As indicated	BIM FILE NAME P4PBT-STW-AAG-SL-M3-A31-100060
NG Bailey CampbellReith	FIRST ISSUE DATE 2016.06.03	PROPOSED STATUS For Procurement
VARIAN medical systems		

DRAWING TITLE									
UCLH Phase 4 & PBT									
CURTAIN WALL SYSTEMS - LEVEL 0									
PROJECT	ISSUER	AREA	LEVEL	TYPE	TRADE	SEQUENCE	REV		
P4PBT	STW	AAB	GND	DET	A31	137510	D		



KEY PLAN:

LEGEND:

1375XX

SHEET NUMBER FOR FACADE SYSTEM DETAILS

SYSTEM AREAS:
ATRIUM / PUBLIC
ADMIN
CLINICAL
RAINSCREEN CLADDING

NOTES:

ALL REVISIONS

Rev	DATE	REVISION HISTORY	Dsg	Drw	Chk	App
D	11.11.16	100% Stage E issue.	STW	SL	RM	KB
C	18/07/16	Issued For Facade Tender	STW	MB	RM	KB
B	06/07/16	Issued For Facade Tender	STW	MB	RM	KB
A	03/06/16	Issued for 50% facade package review	STW	MB	RM	KB



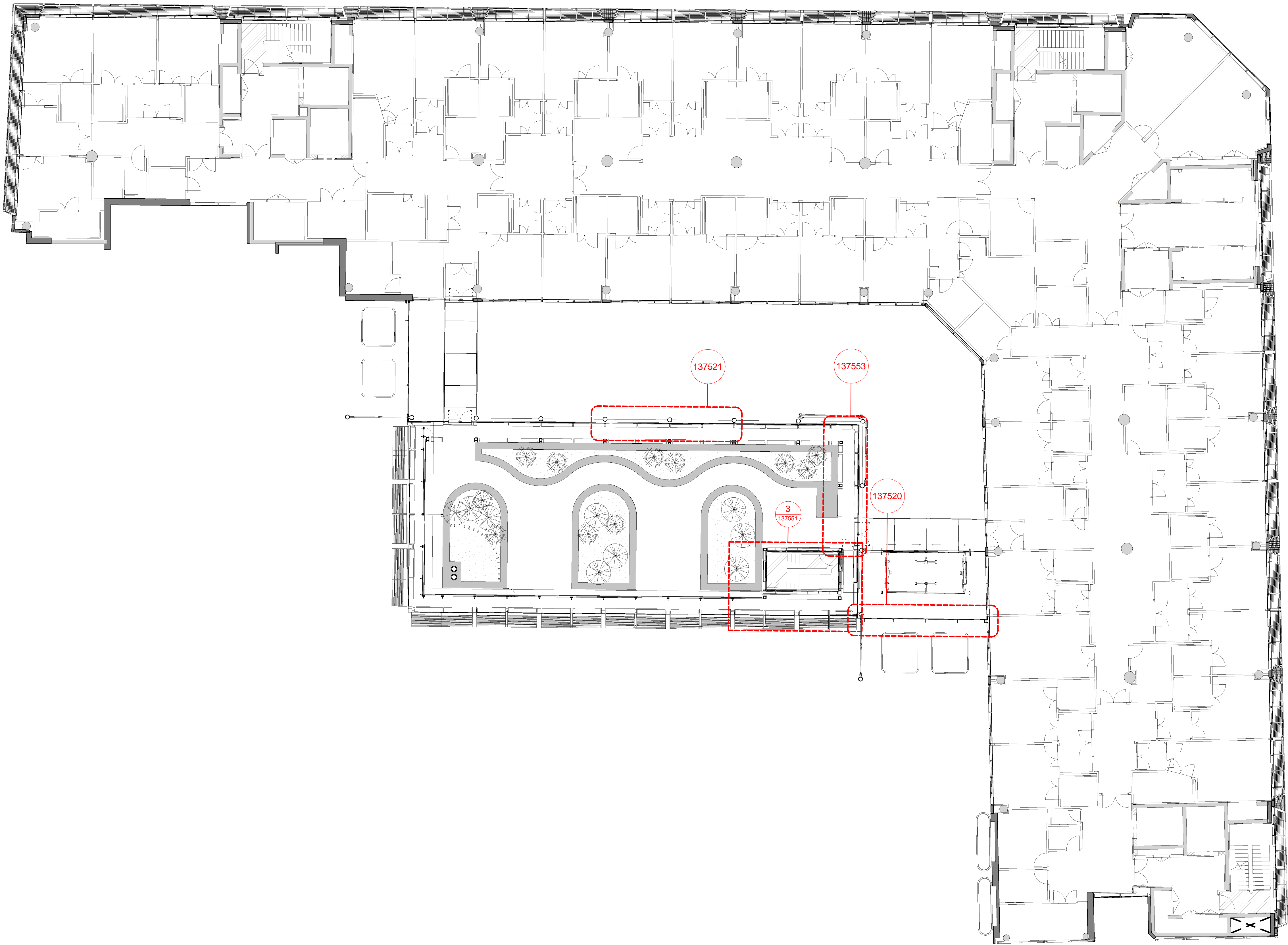
Head Office:
Elizabeth House,
39 York Road,
London, SE1 7NQ.
Tel: 020 7401 0020
Fax: 020 7401 0030
www.bouygues-uk.com

University College London Hospitals NHS Foundation Trust

	Name	Signature	Date
Designed by	STW		11.11.16
Drawn by	SL		11.11.16
Checked	RM		11.11.16
Approved	KB		11.11.16

ORIGINATOR Scott Tallon Walker Architects NG Bailey CampbellReith ccrd VARIAN medical systems Particle Therapy	SCALE As indicated @ A1 FIRST ISSUE DATE 2016.06.03	BIM FILE NAME P4PBT-STW-AAG-SL-M3-A31-100060 PROPOSED STATUS For Procurement
--	--	---

DRAWING TITLE		UCLH Phase 4 & PBT CURTAIN WALL SYSTEMS - LEVEL 2									
PROJECT	ISSUER	AREA	LEVEL	TYPE	TRADE	SEQUENCE	REV				
P4PBT	STW	AAB	02	DET	A31	137511	D				



KEY PLAN:

LEGEND:

1375XX ← SHEET NUMBER FOR FACADE SYSTEM DETAILS

SYSTEM AREAS:

- ATRIUM / PUBLIC
- ADMIN
- CLINICAL
- RAINSCREEN CLADDING

NOTES:

ALL REVISIONS





Rev	DATE	REVISION HISTORY	Dsg	Drw	Chk	App
D	11.11.16	100% Stage E issue.	STW	SL	RM	KB
C	18/07/16	Issued For Facade Tender	STW	MB	RM	KB
B	06/07/16	Issued For Facade Tender	STW	MB	RM	KB
A	03/06/16	Issued for 50% facade package review	STW	MB	RM	KB



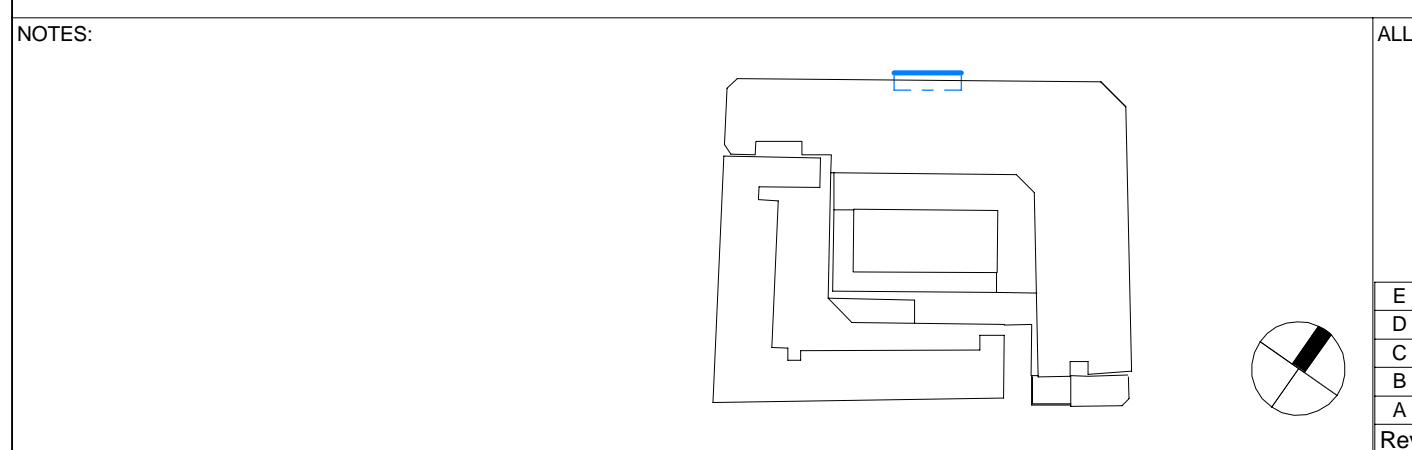
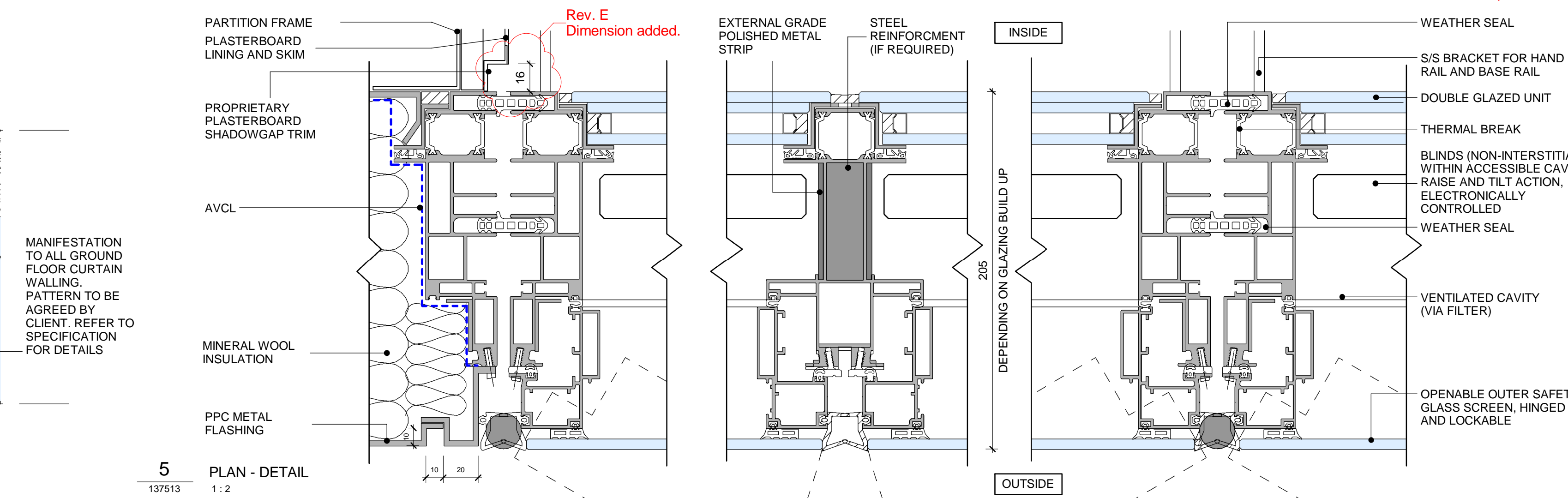
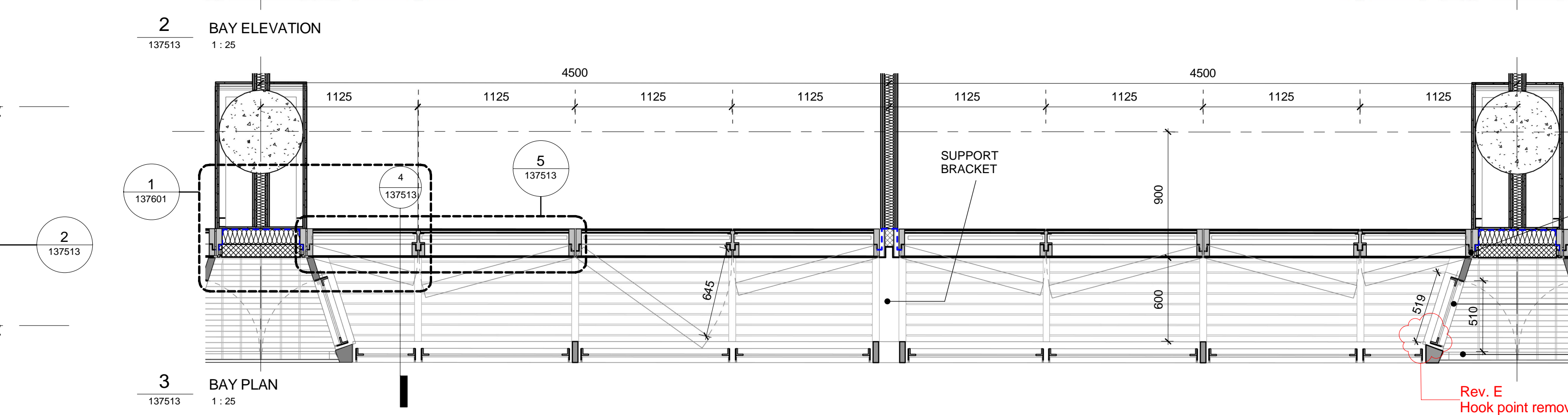
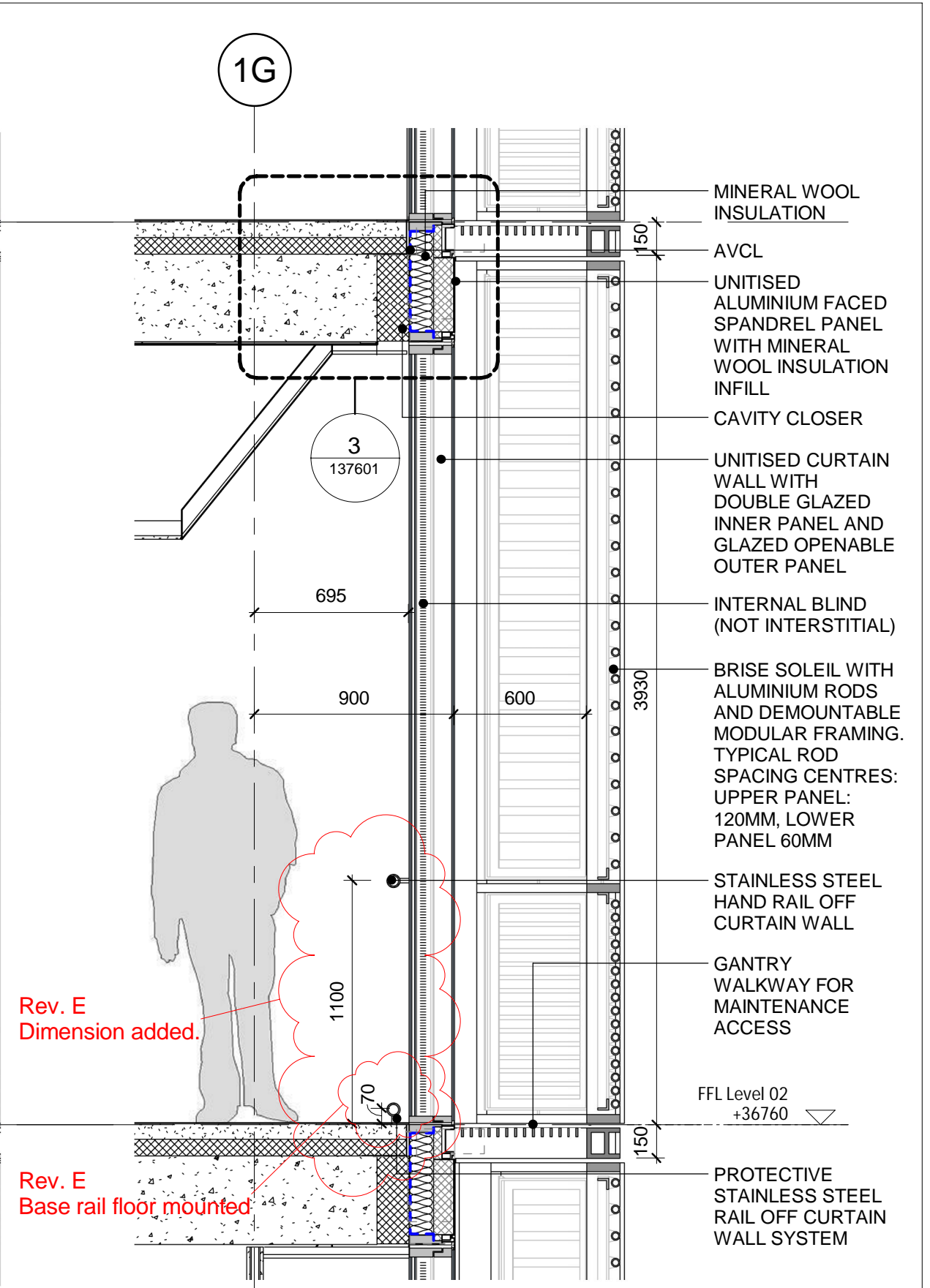
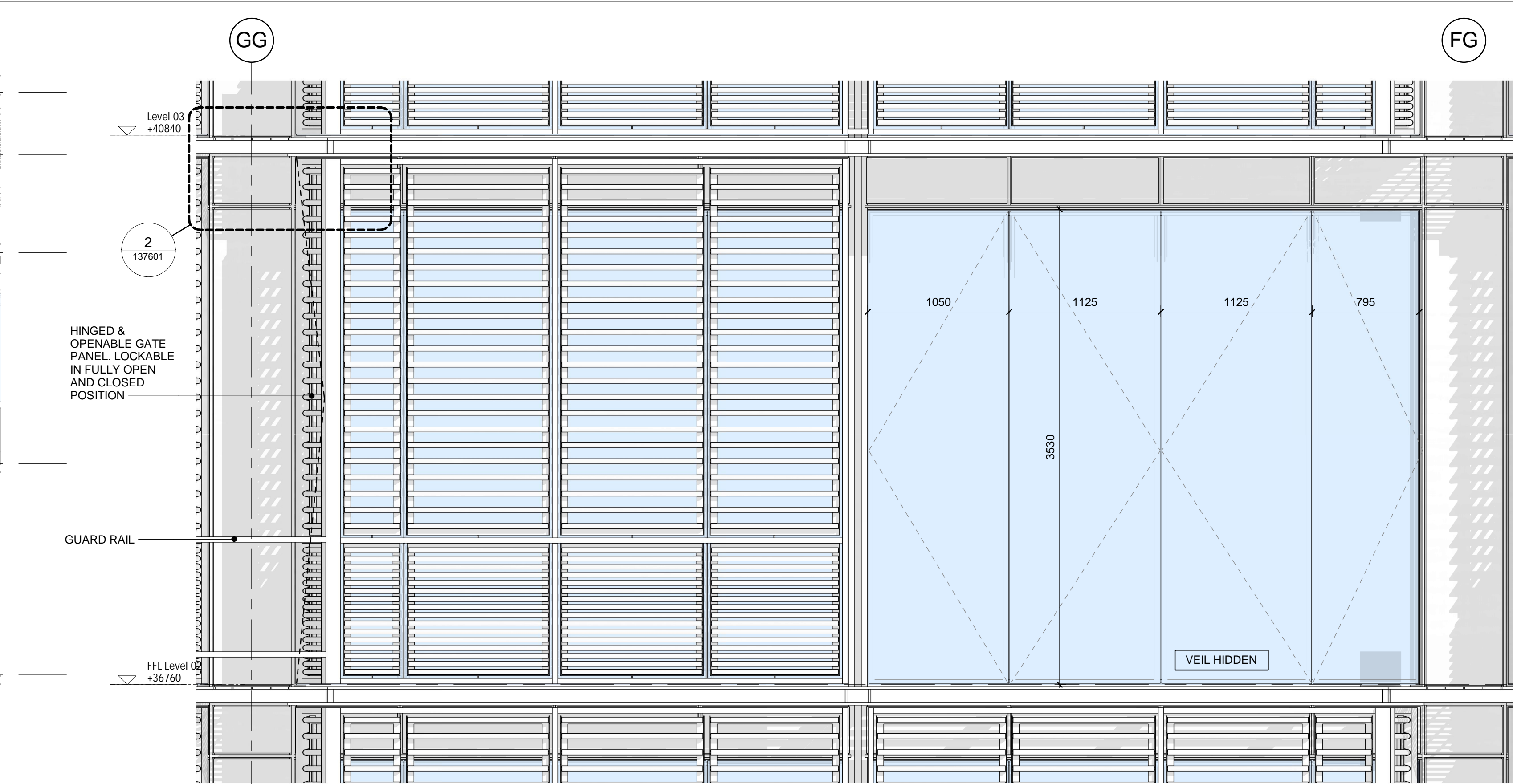
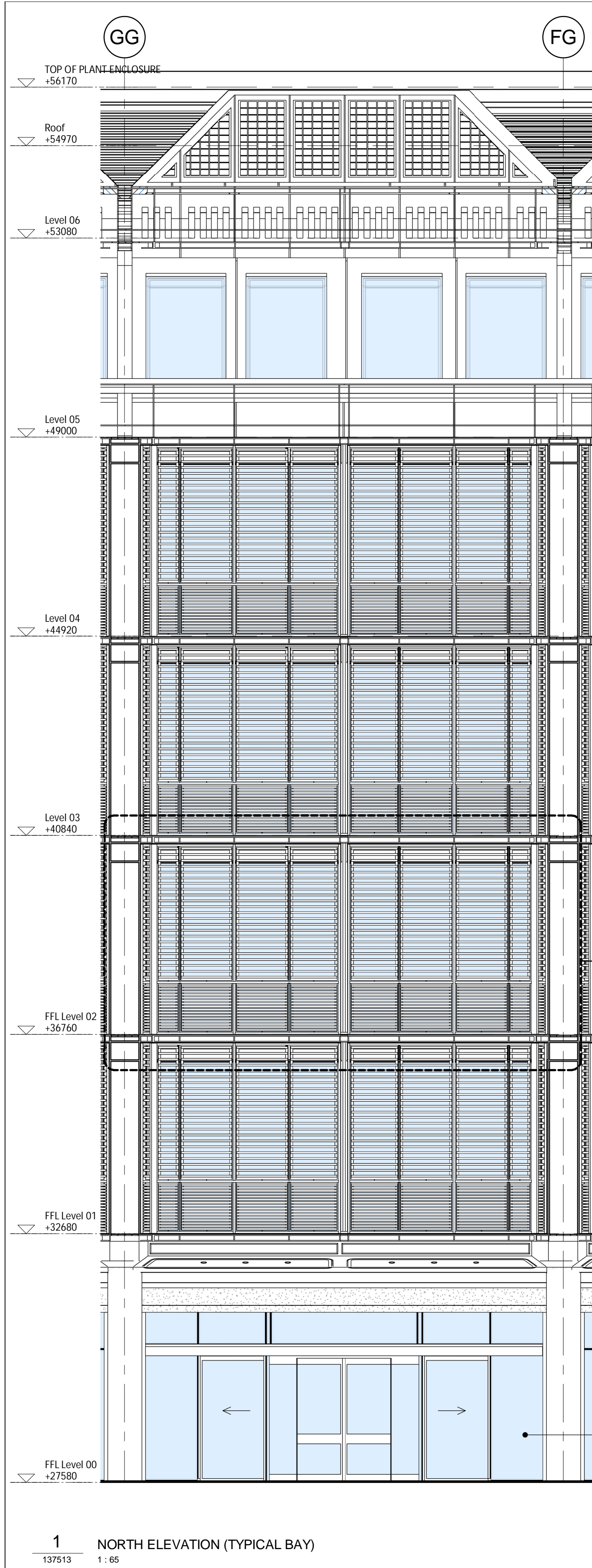
Head Office:
Elizabeth House,
39 York Road,
London, SE1 7NQ.
Tel: 020 7401 0020
Fax: 020 7401 0030
www.bouygues-uk.com

University College London Hospitals NHS Foundation Trust

	Name	Signature	Date
Designed by	STW		11.11.16
Drawn by	SL		11.11.16
Checked	RM		11.11.16
Approved	KB		11.11.16

ORIGINATOR Scott Tallon Walker Architects		 NG Bailey		 CampbellReith	 ccrd	 h HARRIS HARRIS HARRIS	
SCALE As indicated		@ A1	BIM FILE NAME P4PBT-STW-AAG-SL-M3-A31-100060		VARIAN medical systems		Particle Therapy
FIRST ISSUE DATE 2016.06.03		PROPOSED STATUS For Procurement					

DRAWING TITLE									
UCLH Phase 4 & PBT									
CURTAIN WALL SYSTEMS - LEVEL 3									
PROJECT	ISSUER	AREA	LEVEL	TYPE	TRADE	SEQUENCE	REV		
P4PBT	STW	AAB	03	DET	A31	137512	D		





ALL REVISIONS									
Rev	DATE	REVISION HISTORY	Dsg	Drw	Chk	App			
E	11.11.16	100% Stage E issue.	STW	SL	RM	KB			
D	15/08/16	Revised 90% issue in response to comments.	STW	RM	KB	KB			
C	18/07/16	Issued For Facade Tender	STW	DW	RM	KB			
B	06/07/16	Issued For Facade Tender	STW	DW	RM	KB			
A	03/06/16	Issued for 50% facade package review	STW	DW	RM	KB			



BOUYGUES
Head Office:
Elizabeth House,
39 York Road,
London, SE1 7NQ.
Tel: 020 7401 0020
Fax: 020 7401 0030
www.bouygues-uk.com

University College London Hospitals NHS Foundation Trust			
Designed by	Name	Signature	Date
Drawn by	SL		11.11.16
Checked	RM		11.11.16
Approved	KB		11.11.16

ORIGINATOR Scott Tallon Walker Architects		 	
 NG Bailey	CampbellReith <small>ARCHITECTS</small>	VARIAN medical systems Particle Therapy	
SCALE As indicated	@ A1	BIM FILE NAME P4PBT-STW-AAG-SL-M3-A31-100060	
FIRST ISSUE DATE 2016.06.03	PROPOSED STATUS For Procurement		

DRAWING TITLE									
UCLH Phase 4 & PBT									
TYPICAL CLINICAL CURTAIN WALL - STREET FACING (EWS-250)									
PROJECT	ISSUER	AREA	LEVEL	TYPE	TRADE	SEQUENCE	REV		
P4PBT	STW	AAB	SL	DET	A31	137513	E		

