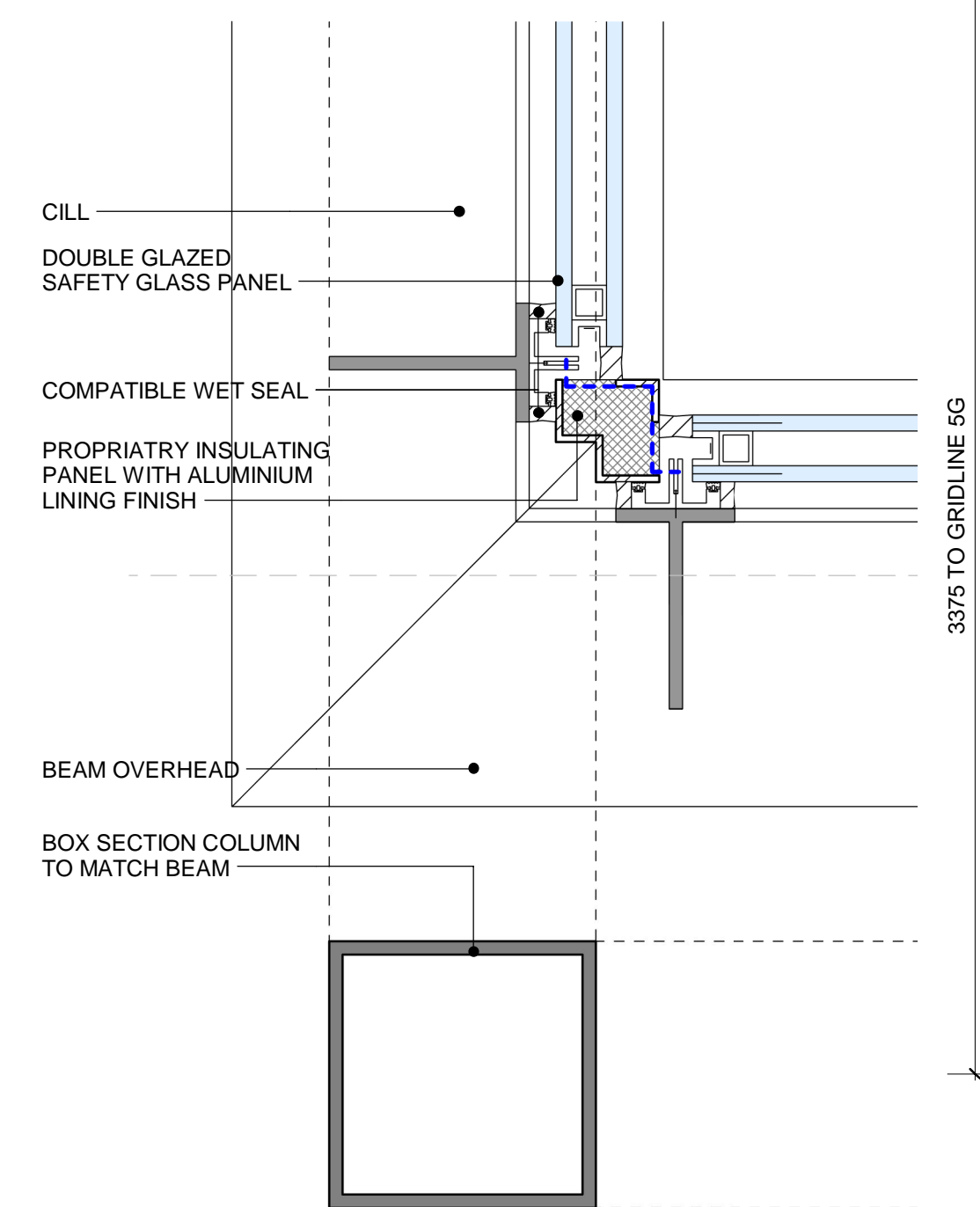
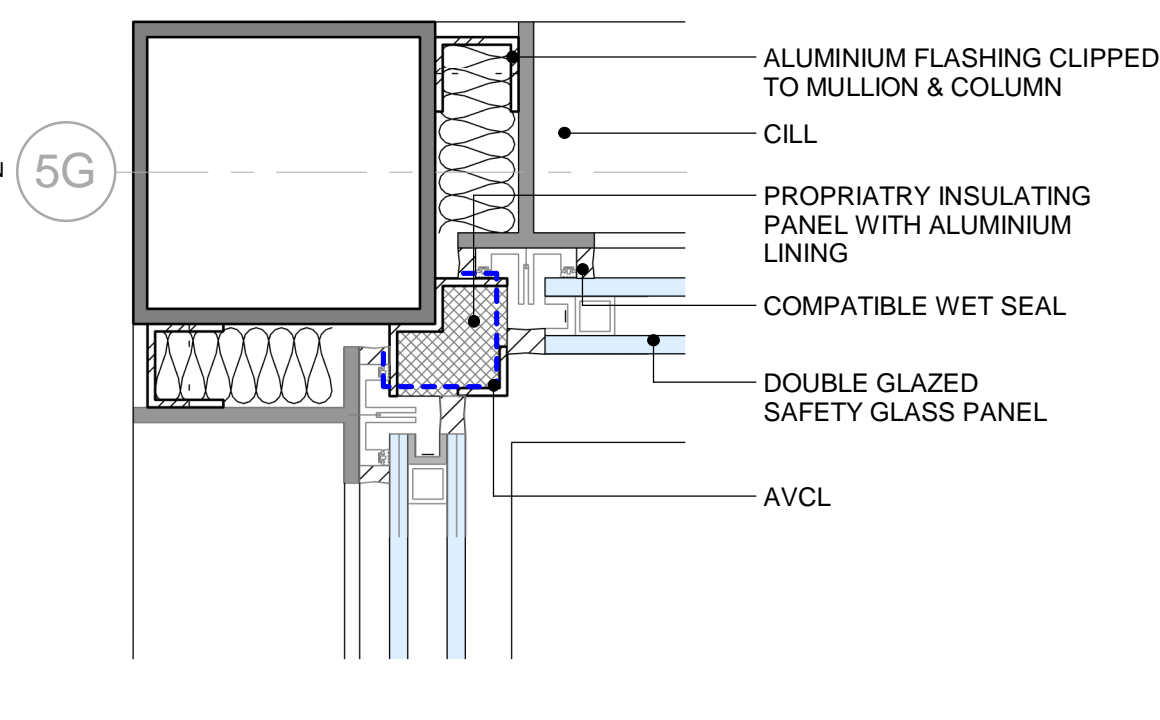
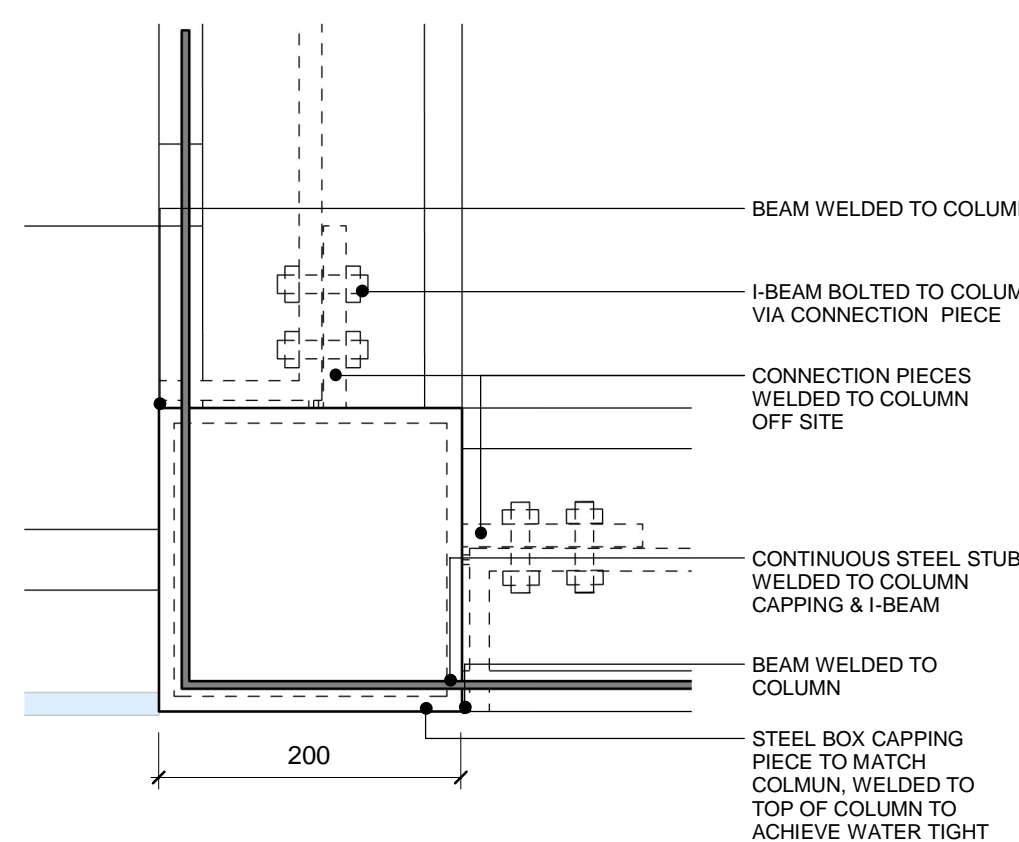
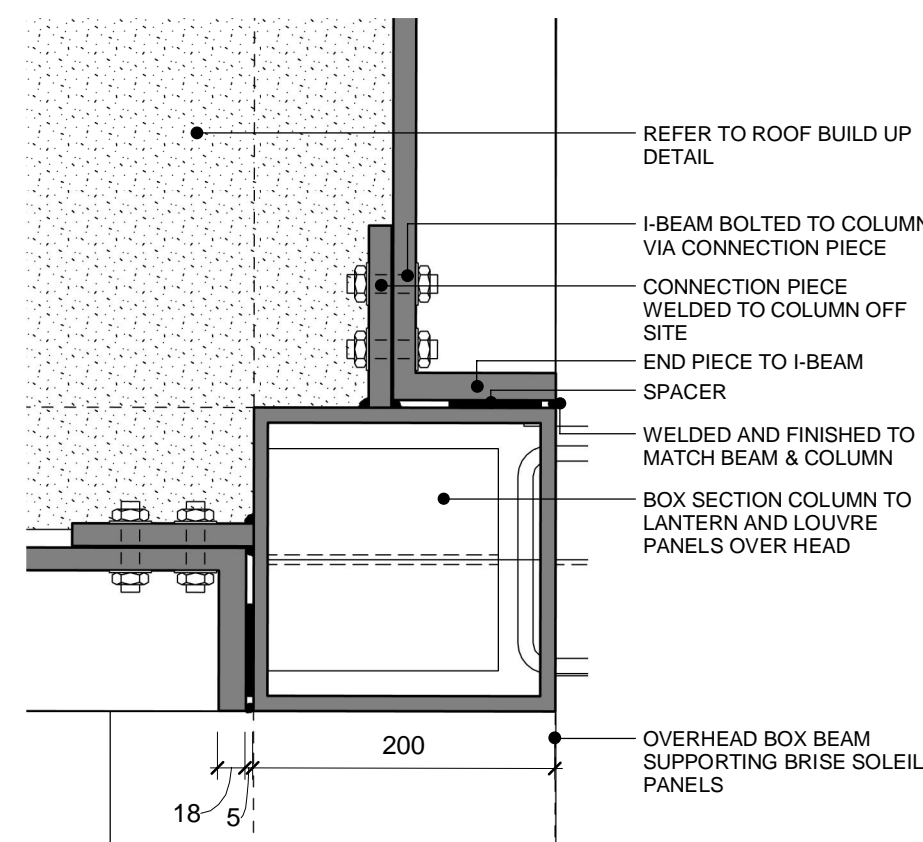
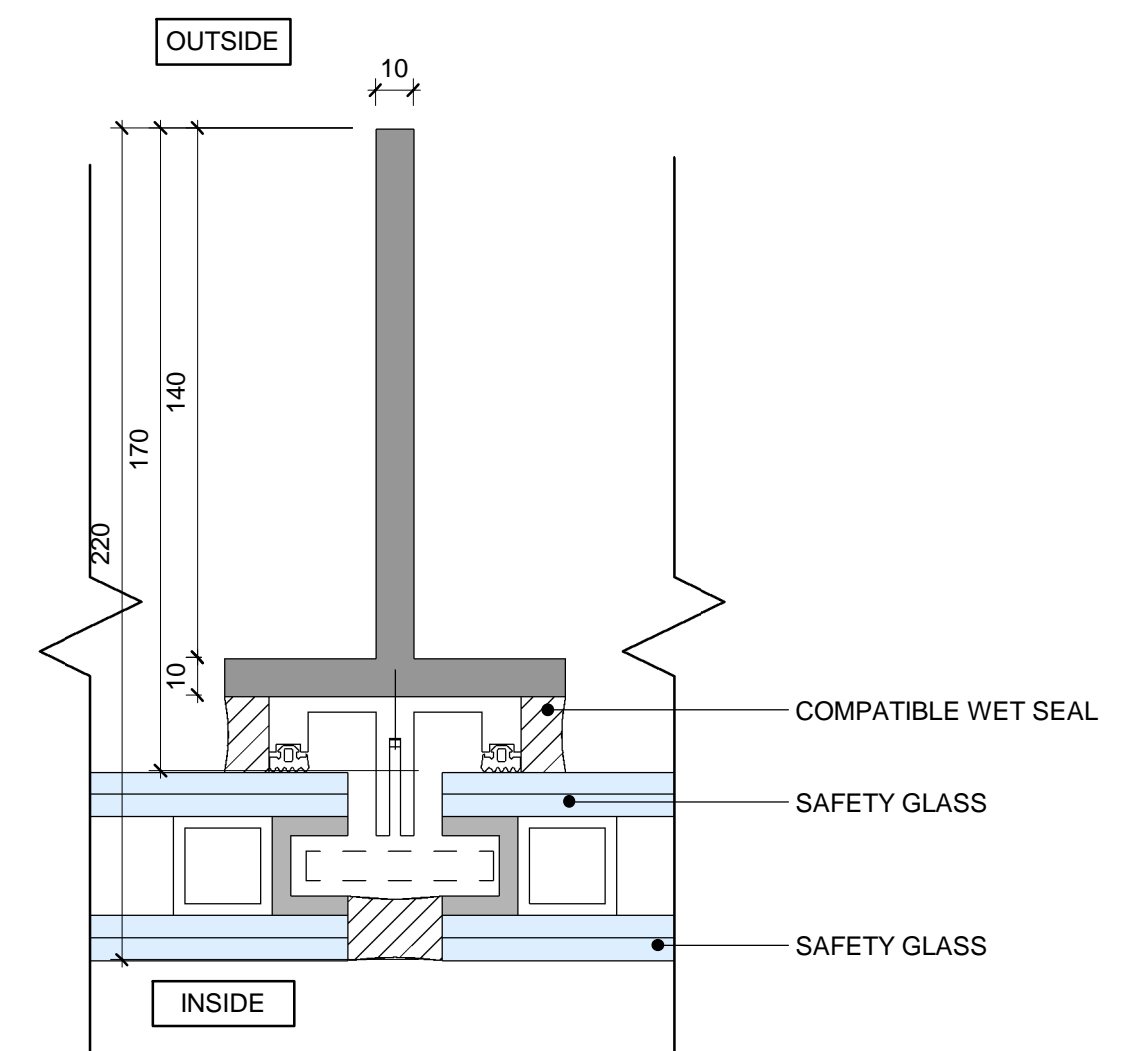


1 LANTERN ROOF PLAN
137552 1:25



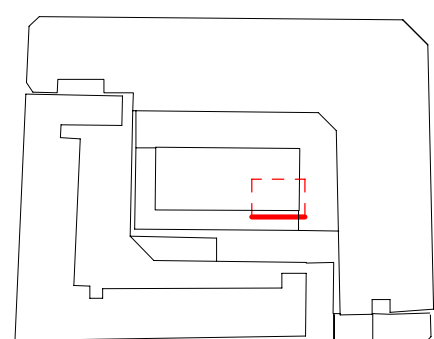
8 UPSTAND TO PLANTER AND ROOF RAIN DRAIN DETAIL
137552 1:10



9 PLAN - CURTAIN WALL CORNER
137552 1:5

10 PLAN DETAIL
137552 1:2

NOTES:



ALL REVISIONS

Rev	DATE	REVISION HISTORY	Dsg	Drw	Chk	App
D	11.11.16	100% Stage E issue.	STW	SL	RM	KB
C	15/08/16	Revised 90% issue in response to comments.	STW	FL	RM	KB
B	18/07/16	Issued For Facade Tender	STW	FL	RM	KB
A	06/07/16	Issued For Facade Tender	STW	FL	RM	KB



BOUYGUES
Head Office:
Elizabeth House,
39 York Road,
London, SE1 7NQ.
Tel: 020 7401 0020
Fax: 020 7401 0030
www.bouygues-uk.com

University College London Hospitals **NHS**
NHS Foundation Trust

Name	Signature	Date
Designed by	STW	11.11.16
Drawn by	SL	11.11.16
Checked	RM	11.11.16
Approved	KB	11.11.16

ORIGINATOR
Scott Tallon Walker Architects
NG Bailey CampbellReith

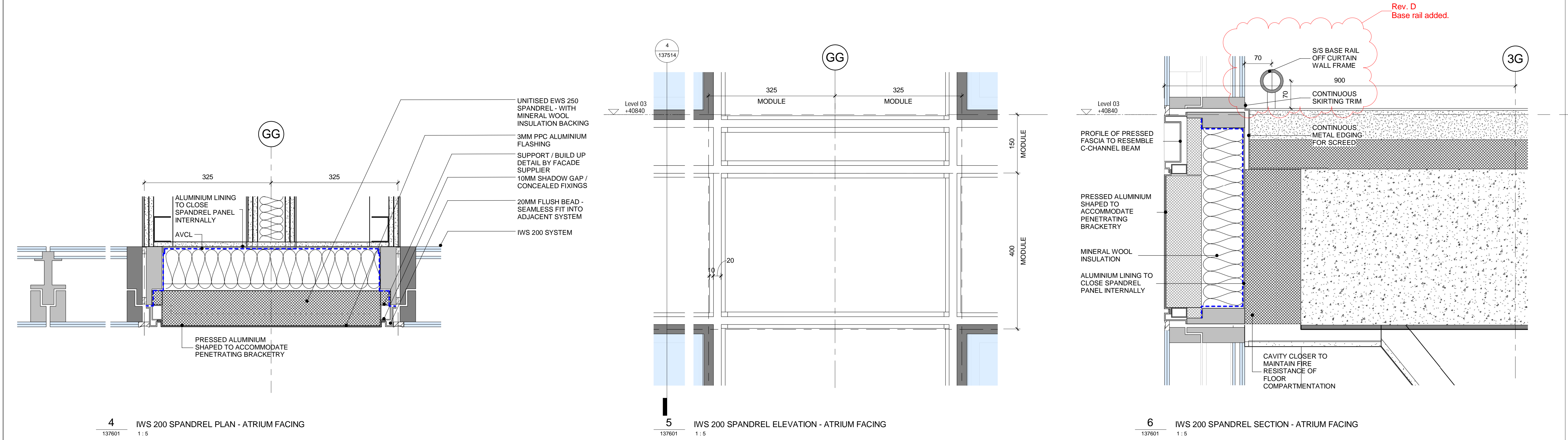
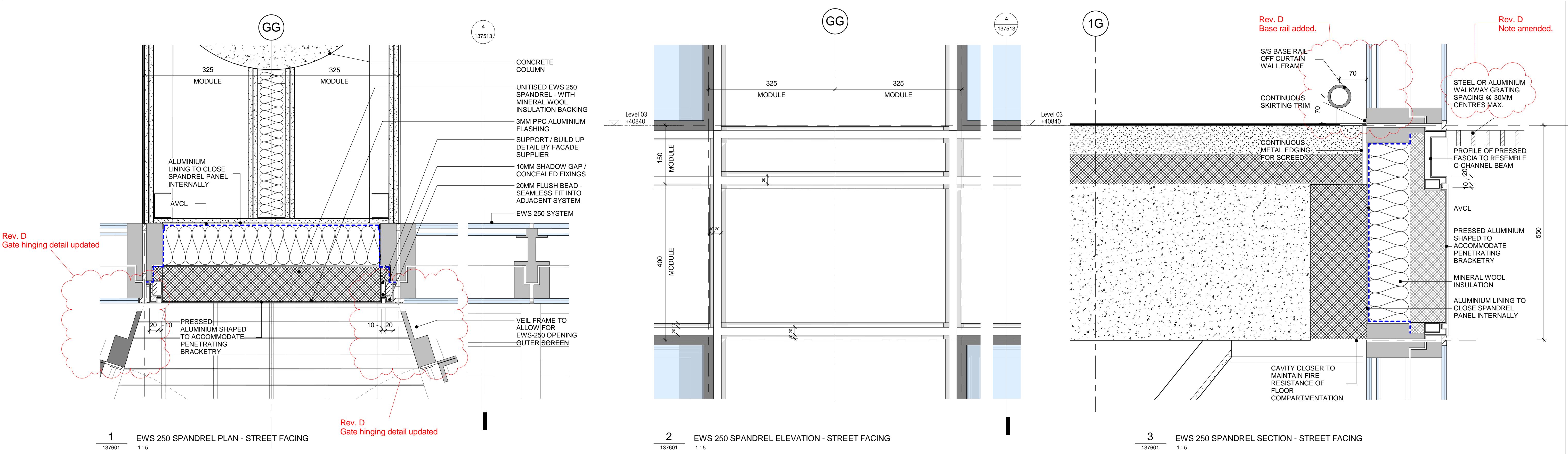
SCALE	@ A1	BIM FILE NAME
As indicated		P4PBT-STW-AAG-SL-M3-A31-100060
FIRST ISSUE DATE		2016.07.06
PROPOSED STATUS		For Procurement

VARIAN medical systems
Particle Therapy

DRAWING TITLE

UCLH Phase 4 & PBT
LANTERN EWS-550 DETAILS

PROJECT	ISSUER	AREA	LEVEL	TYPE	TRADE	SEQUENCE	REV
P4PBT	STW	AAB	03	DET	A31	137552	D



NOTES:

ALL REVISIONS

Rev	DATE	REVISION HISTORY	Dsg	Drw	Chk	App
D	11.11.16	100% Stage E issue.	STW	SL	RM	KB
C	15/08/16	Revised 90% issue in response to comments.	STW	RM	KB	KB
B	18/07/16	Issued For Facade Tender	STW	MB	RM	KB
A	06/07/16	Issued For Facade Tender	STW	MB	RM	KB

Head Office:
Elizabeth House,
39 York Road,
London, SE1 7NQ.
Tel: 020 7401 0020
Fax: 020 7401 0030
www.bouygues-uk.com

University College London Hospitals NHS Foundation Trust

	Name	Signature	Date
Designed by	STW		11.11.16
Drawn by	SL		11.11.16
Checked	RM		11.11.16
Approved	KB		11.11.16

ORIGINATOR
Scott Tallon Walker Architects

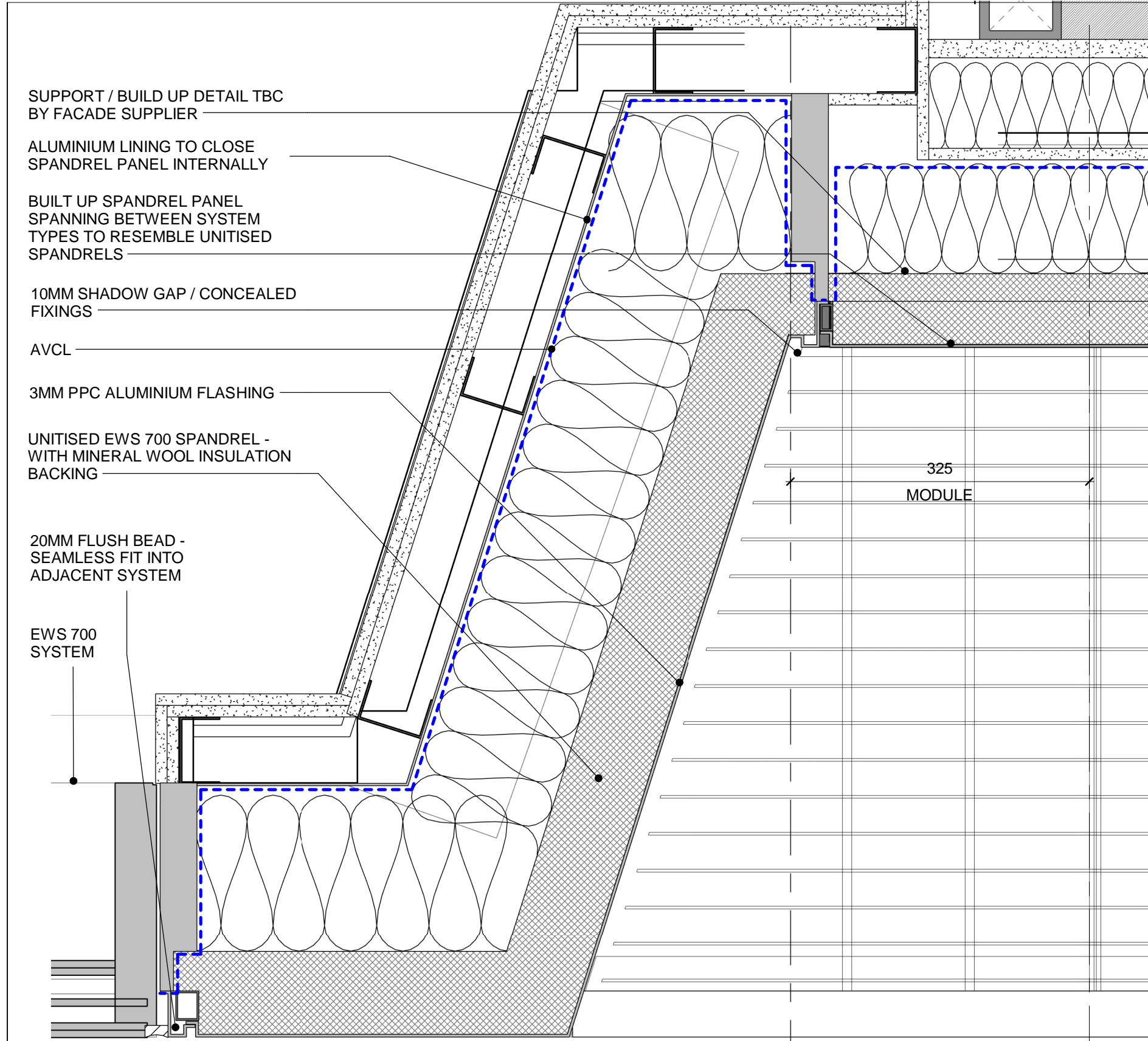
SCALE
1:5

FIRST ISSUE DATE
2016.07.06

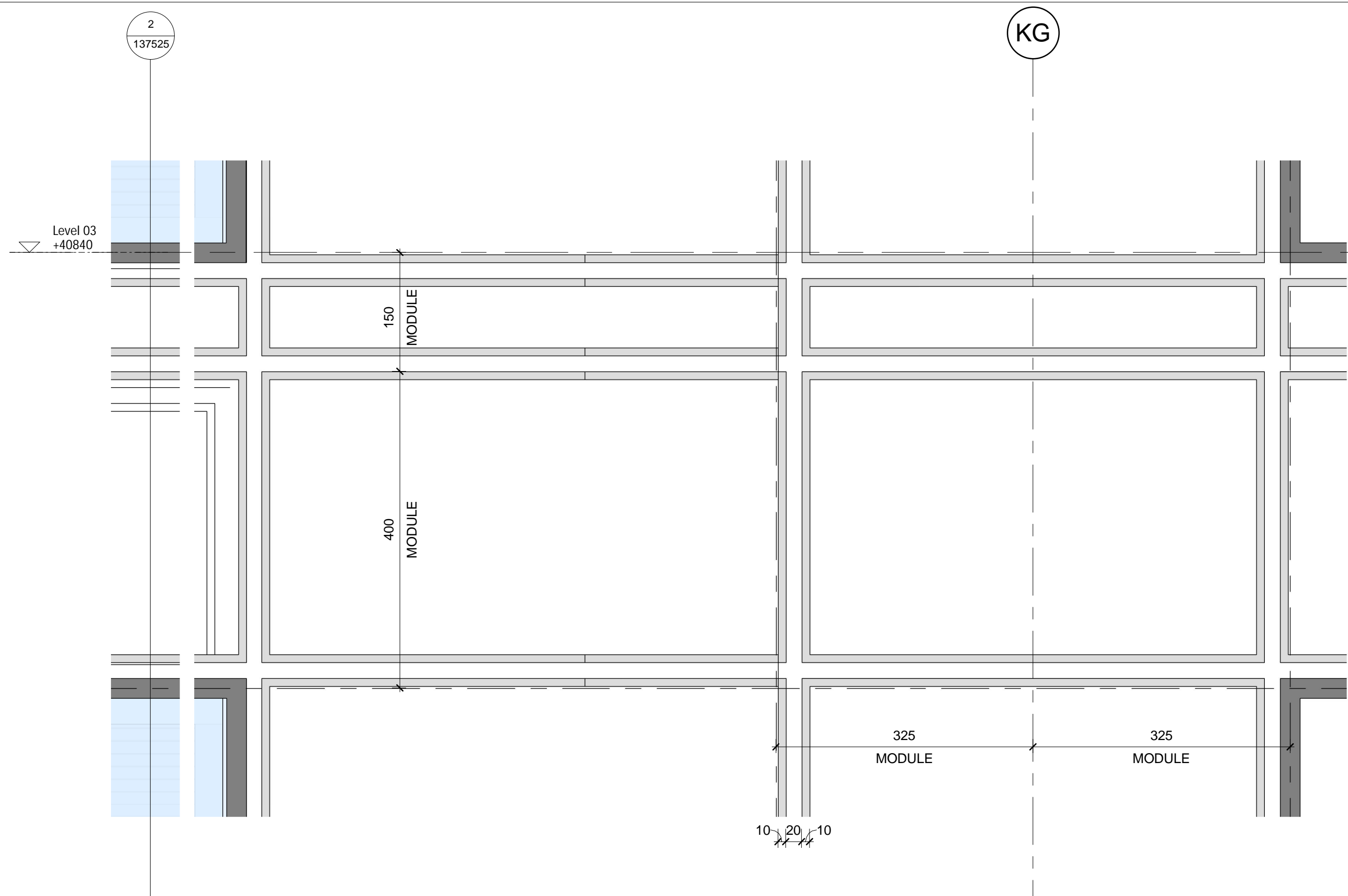
PROPOSED STATUS
For Procurement

DRAWING TITLE
UCLH Phase 4 & PBT
TYPICAL SPANDREL PANELS 1

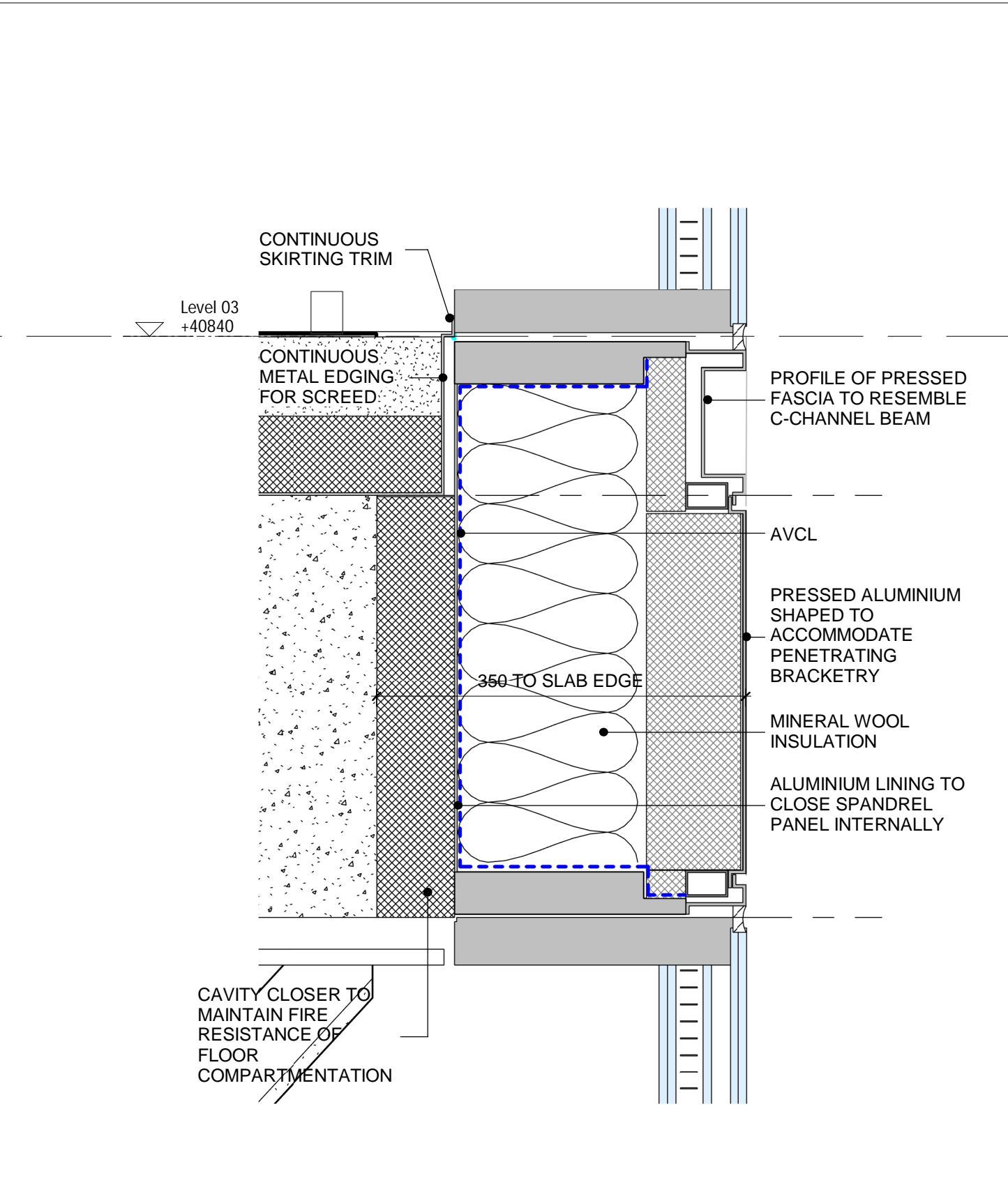
PROJECT	ISSUER	AREA	LEVEL	TYPE	TRADE	SEQUENCE	REV
P4PBT	STW	AAB	SL	DET	A31	137601	D



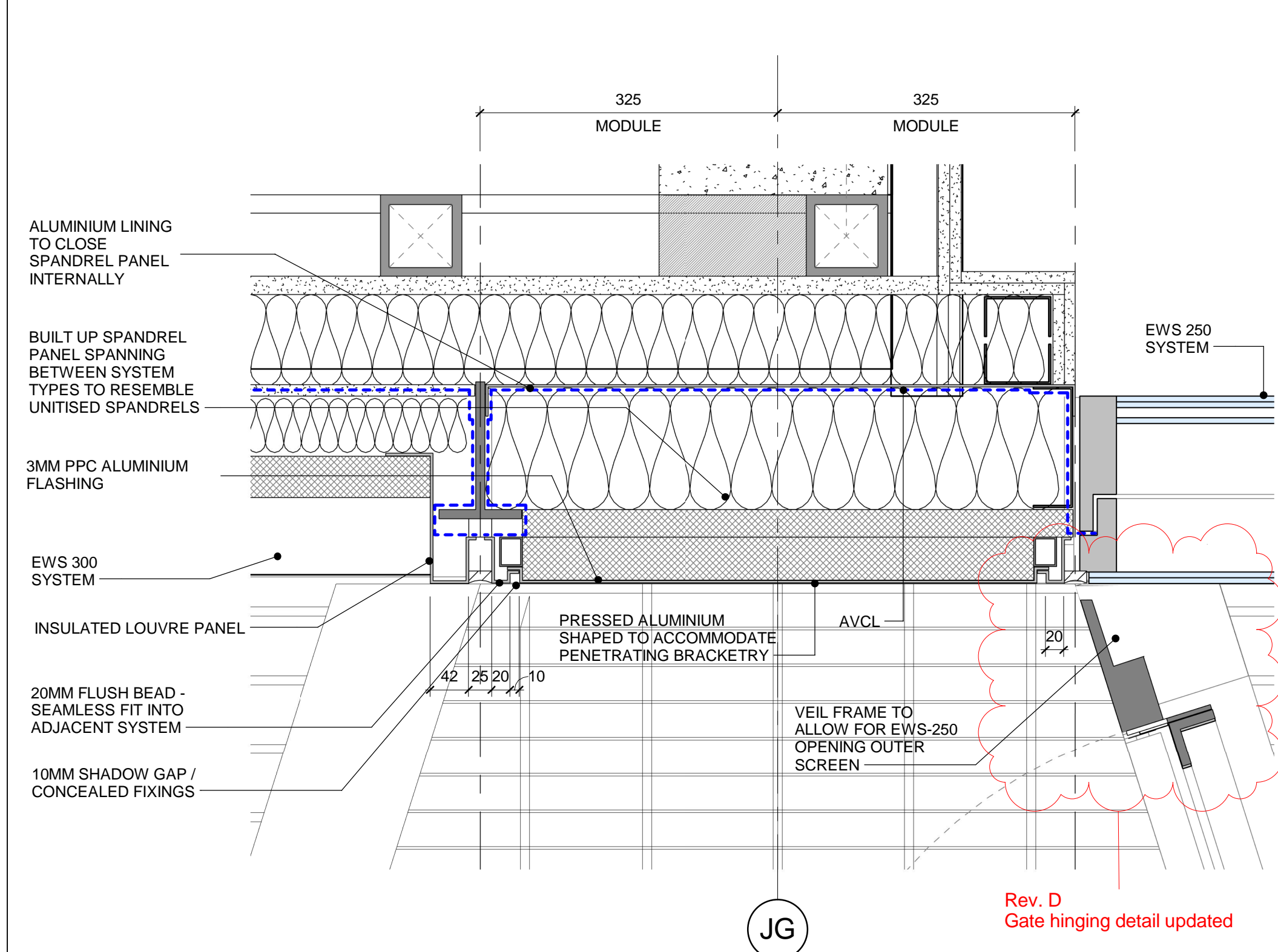
1 EWS 300/700 SPANDREL PLAN - STREET FACING
137602 1:5



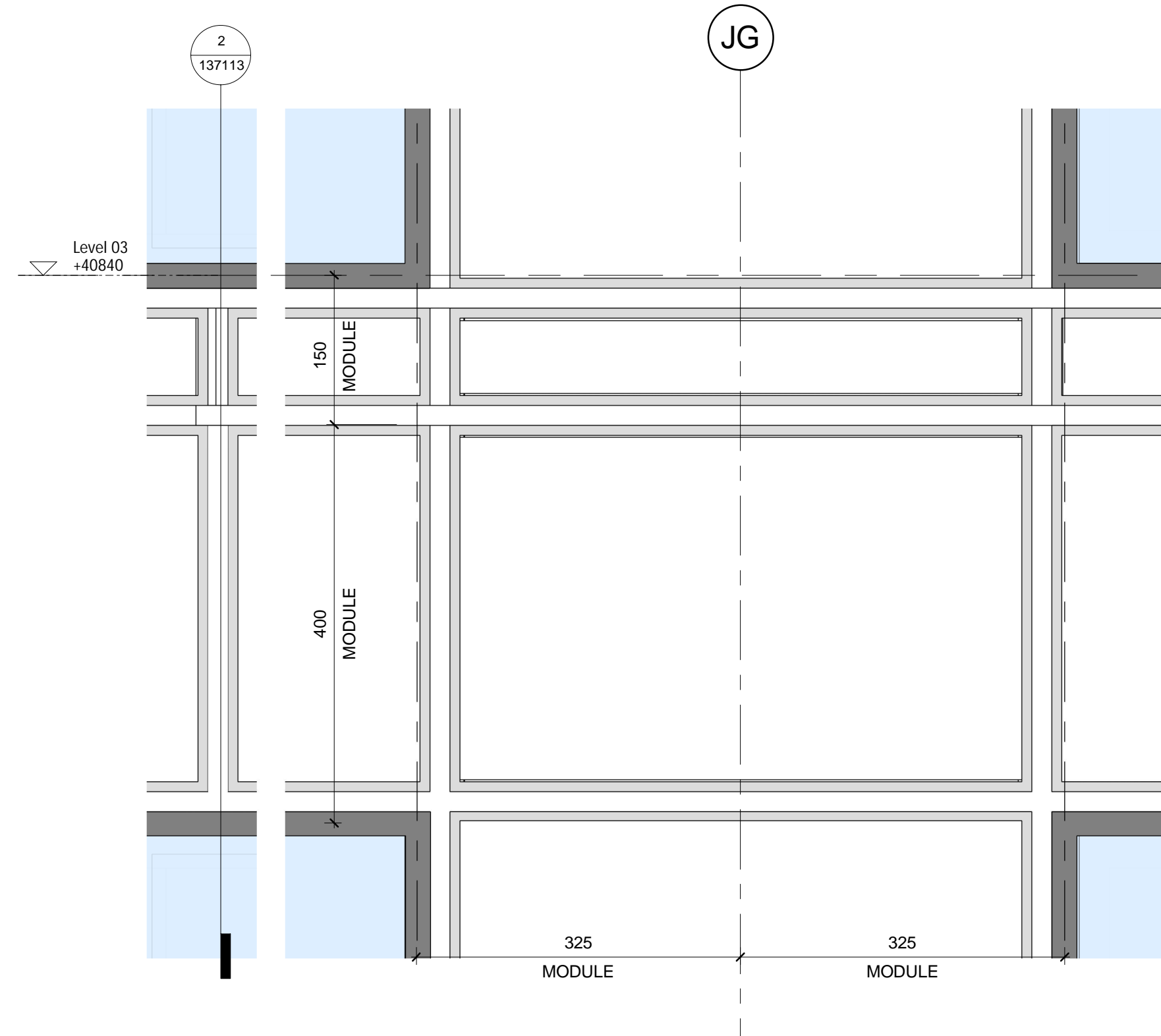
2 EWS 300/700 SPANDREL ELEVATION - STREET FACING
137602 1:5



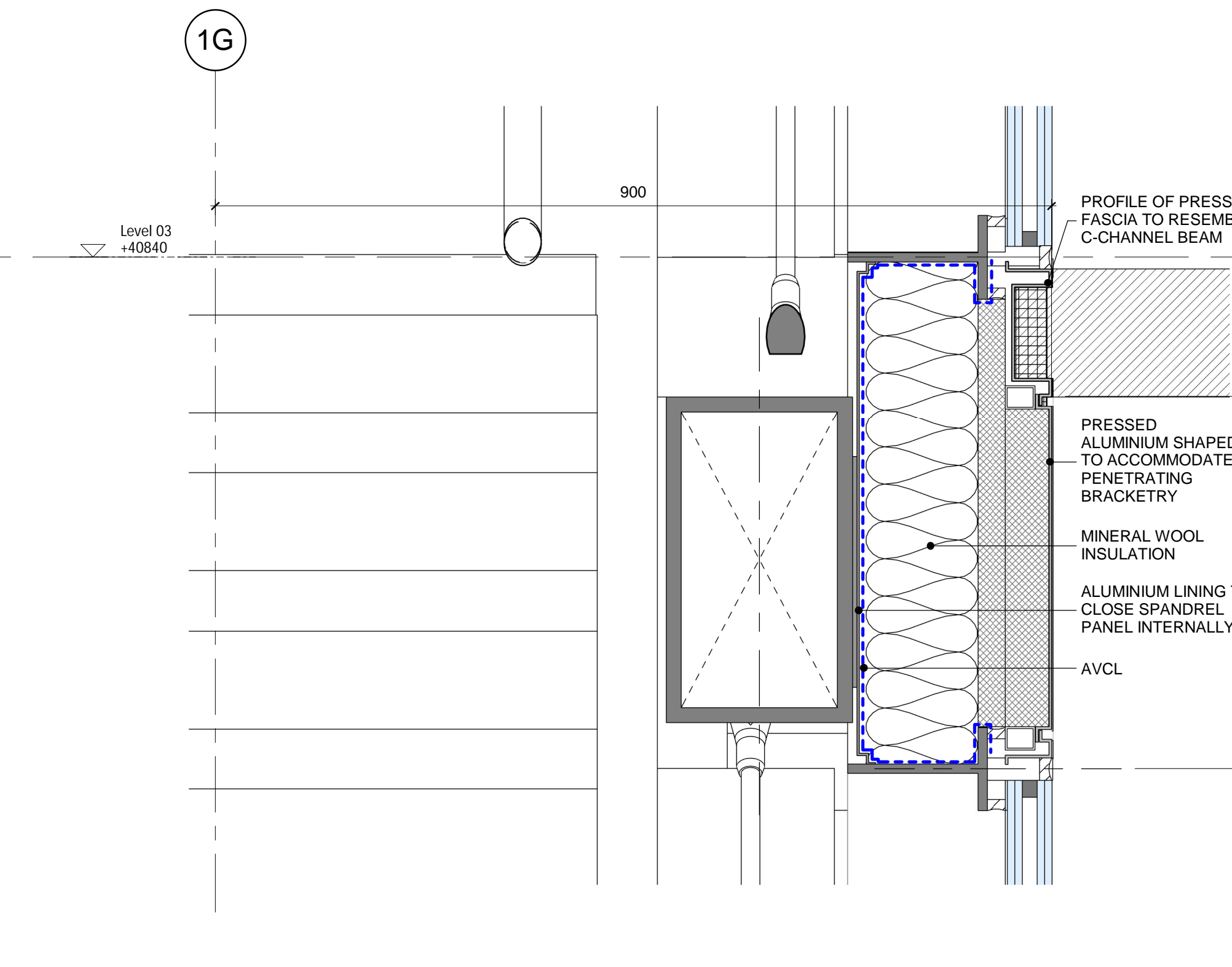
3 EWS 225 SPANDREL SECTION - STREET FACING
137602 1:5



4 EWS 300/250 SPANDREL PLAN - STREET FACING
137602 1:5

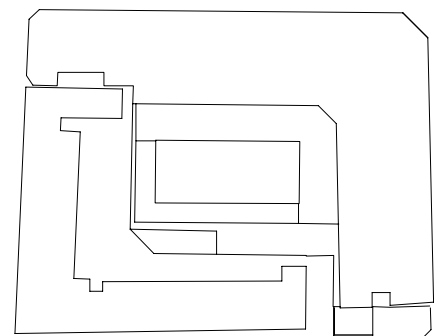


5 EWS 300/250 SPANDREL ELEVATION - STREET FACING
137602 1:5



6 EWS 300 SPANDREL SECTION - STREET FACING
137602 1:5

NOTES:



ALL REVISIONS

Rev	DATE	REVISION HISTORY	Dsg	Drw	Chk	App
D	11.11.16	100% Stage E issue.	STW	SL	RM	KB
C	15/08/16	Revised 90% issue in response to comments.	STW	RM	KB	KB
B	18/07/16	Issued For Facade Tender	STW	MB	RM	KB
A	06/07/16	Issued For Facade Tender	STW	MB	RM	KB



Head Office:
Elizabeth House,
39 York Road,
London, SE1 7NQ.
Tel: 020 7401 0020
Fax: 020 7401 0030
www.bouygues-uk.com

University College London Hospitals NHS Foundation Trust

Name	Signature	Date
Designed by	STW	11.11.16
Drawn by	SL	11.11.16
Checked	RM	11.11.16
Approved	KB	11.11.16

ORIGINATOR
Scott Tallon Walker Architects
NG Bailey CampbellReith

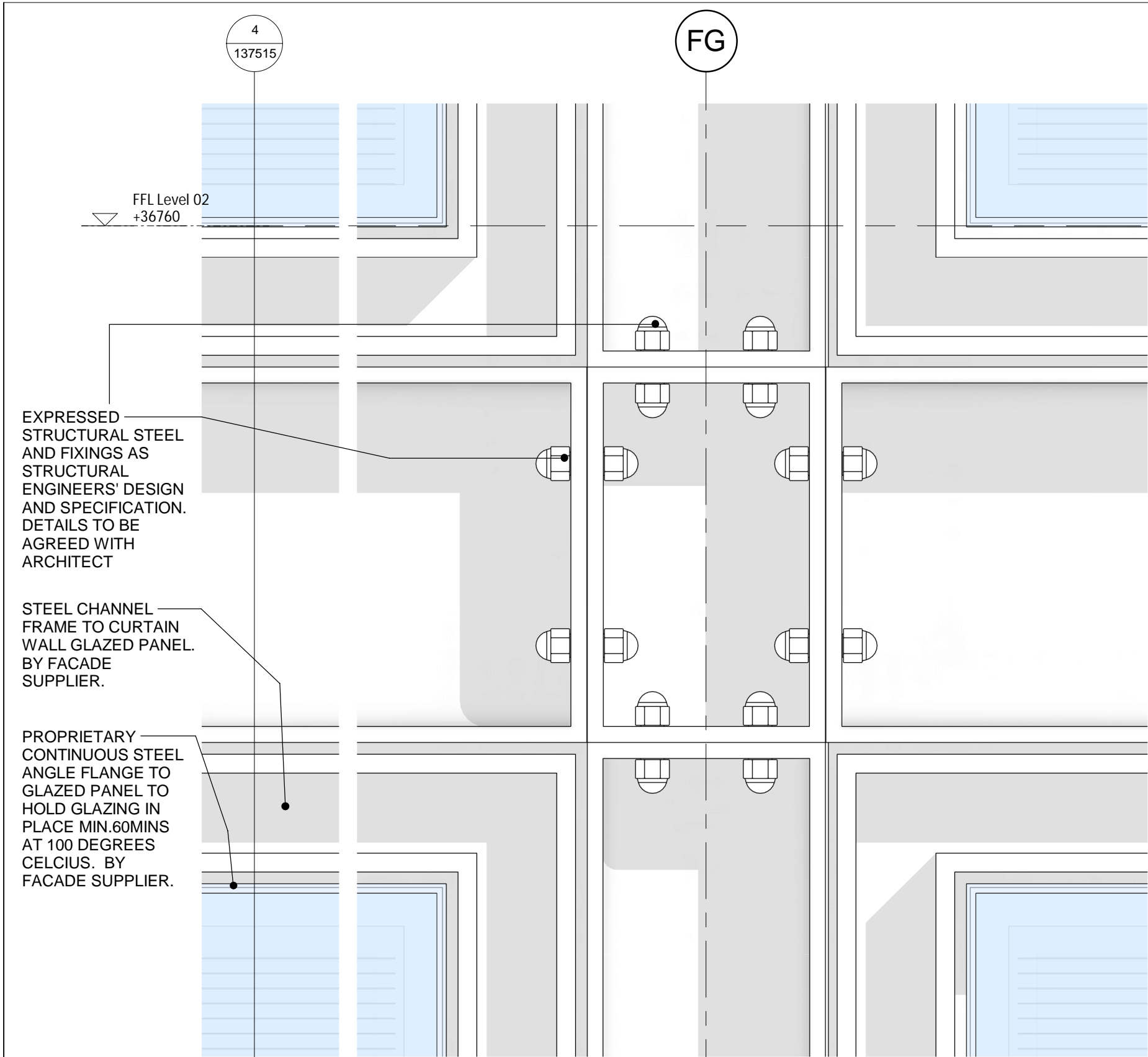
SCALE	@ A1	BIM FILE NAME
1:5		P4PBT-STW-AAG-SL-M3-A31-100060
FIRST ISSUE DATE	PROPOSED STATUS	
2016.07.06	For Procurement	



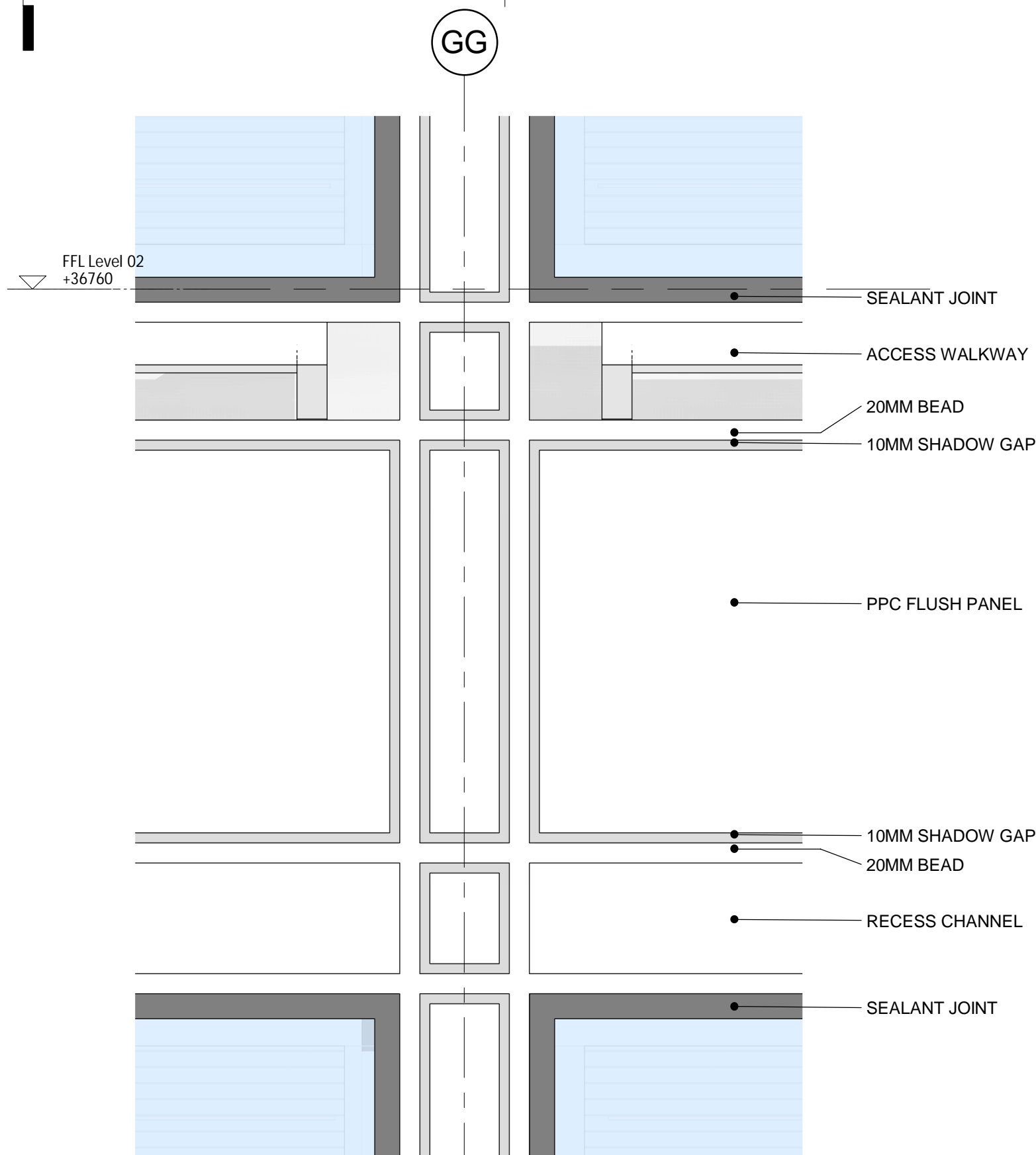
DRAWING TITLE

UCLH Phase 4 & PBT
TYPICAL SPANDREL PANELS 2

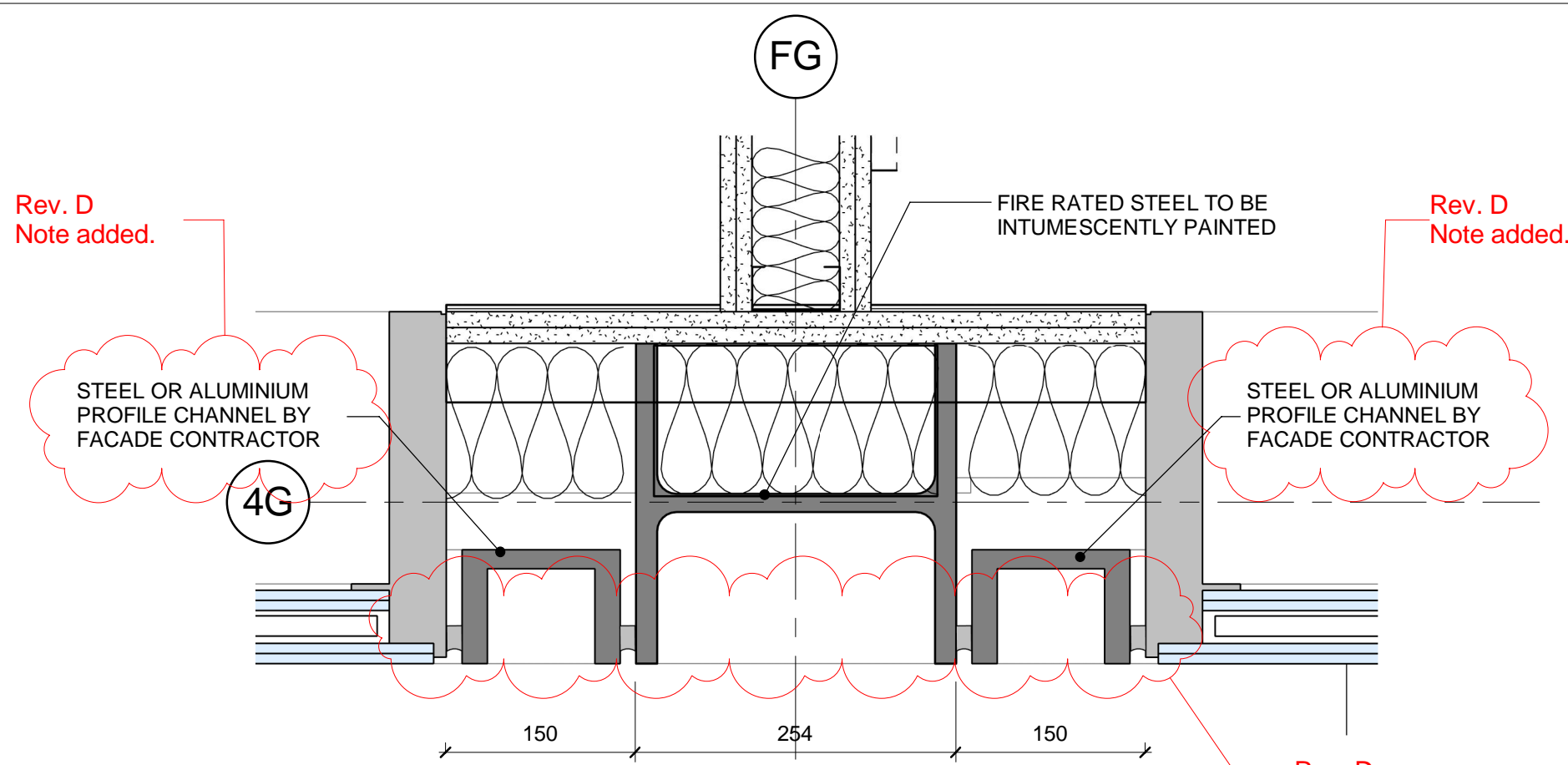
PROJECT	ISSUER	AREA	LEVEL	TYPE	TRADE	SEQUENCE	REV
P4PBT	STW	AAB	SL	DET	A31	137602	D



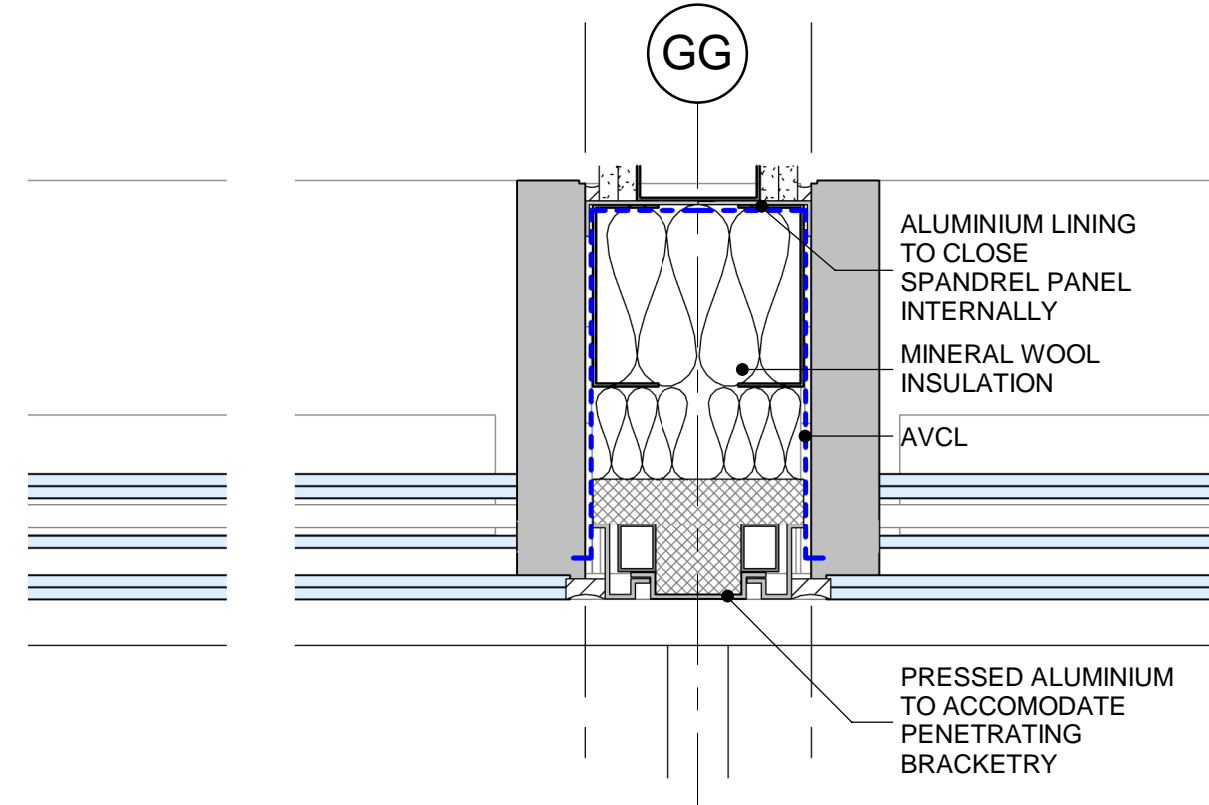
2 137603 - ATRIUM FACING COURTYARD SPANDREL ELEVATION
1:5



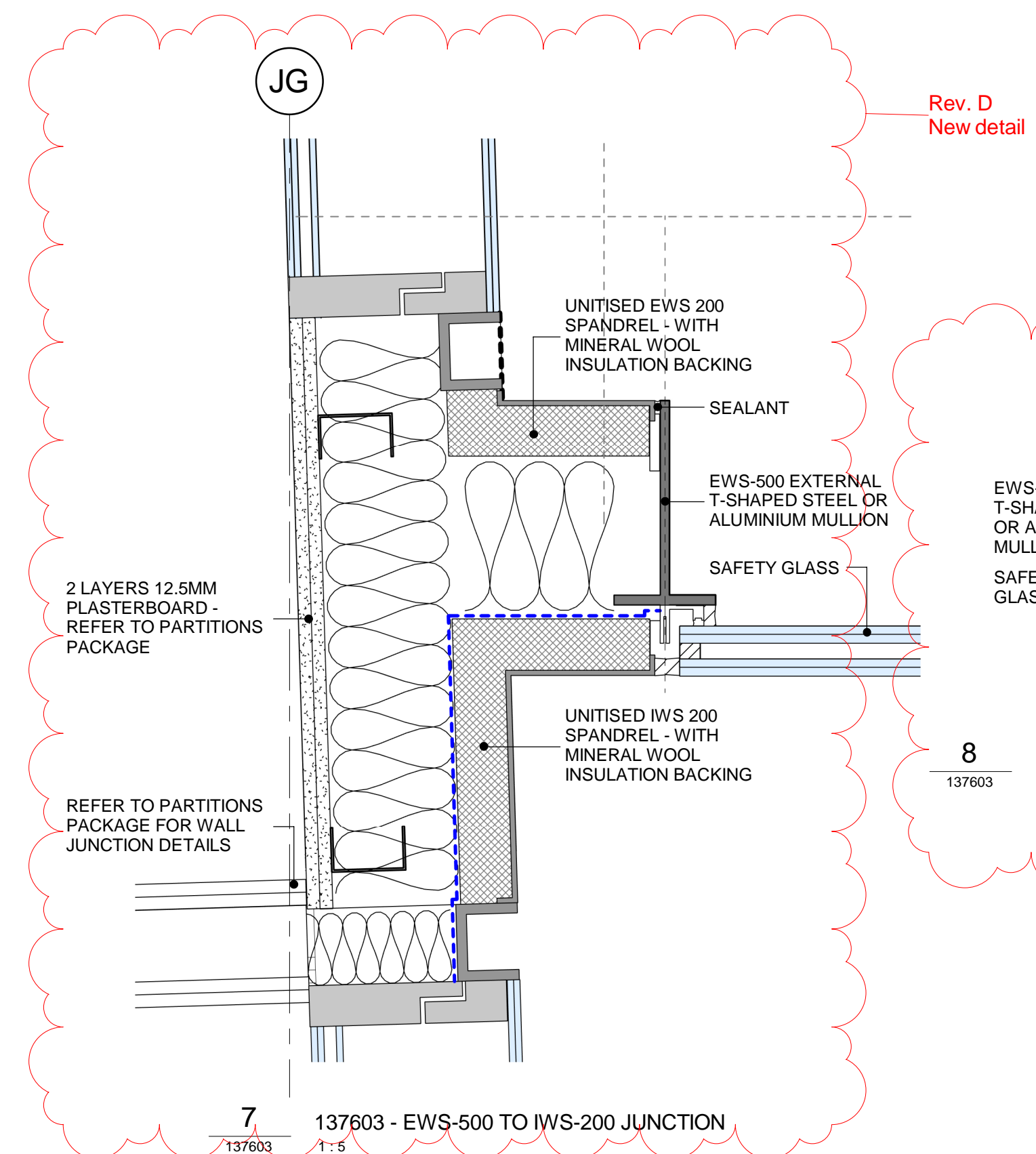
4 137603 - COUTYARD EXTERNAL SPANDREL ELEVATION
1:5



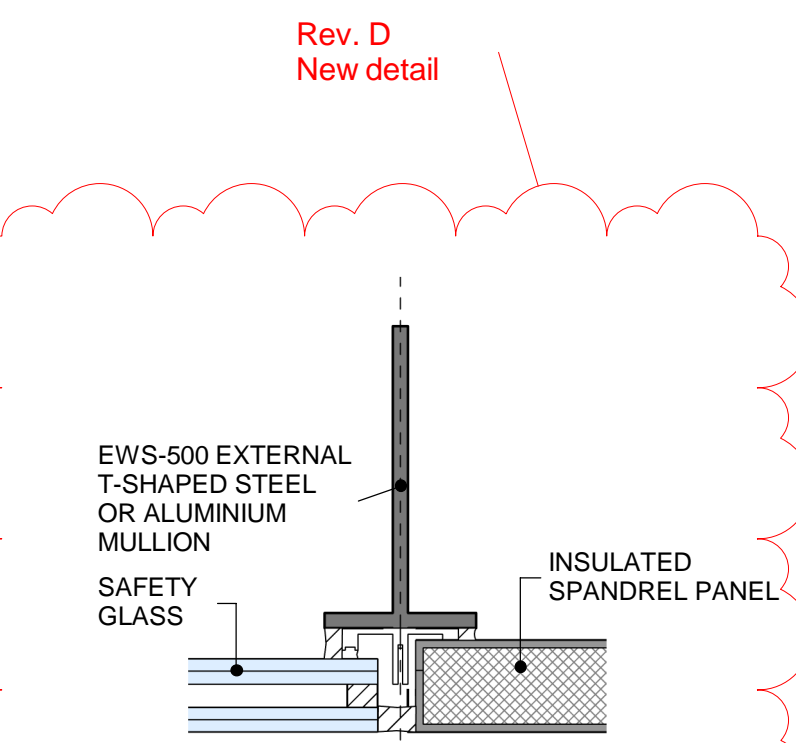
1 137603 - ATRIUM FACING COURTYARD SPANDREL PLAN
1:5



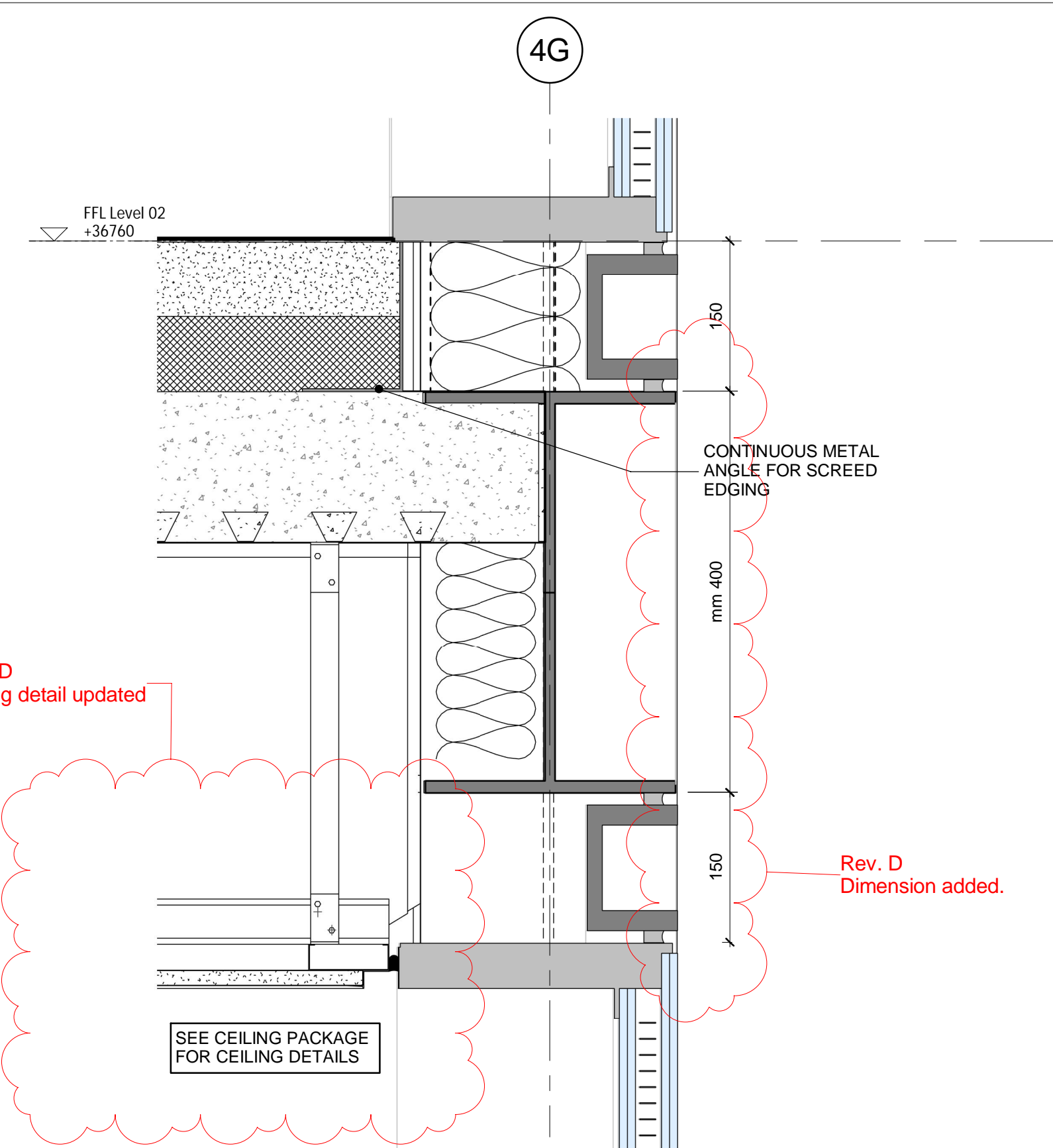
5 137603 - COURTYARD EXTERNAL SPANDREL PLAN
1:5



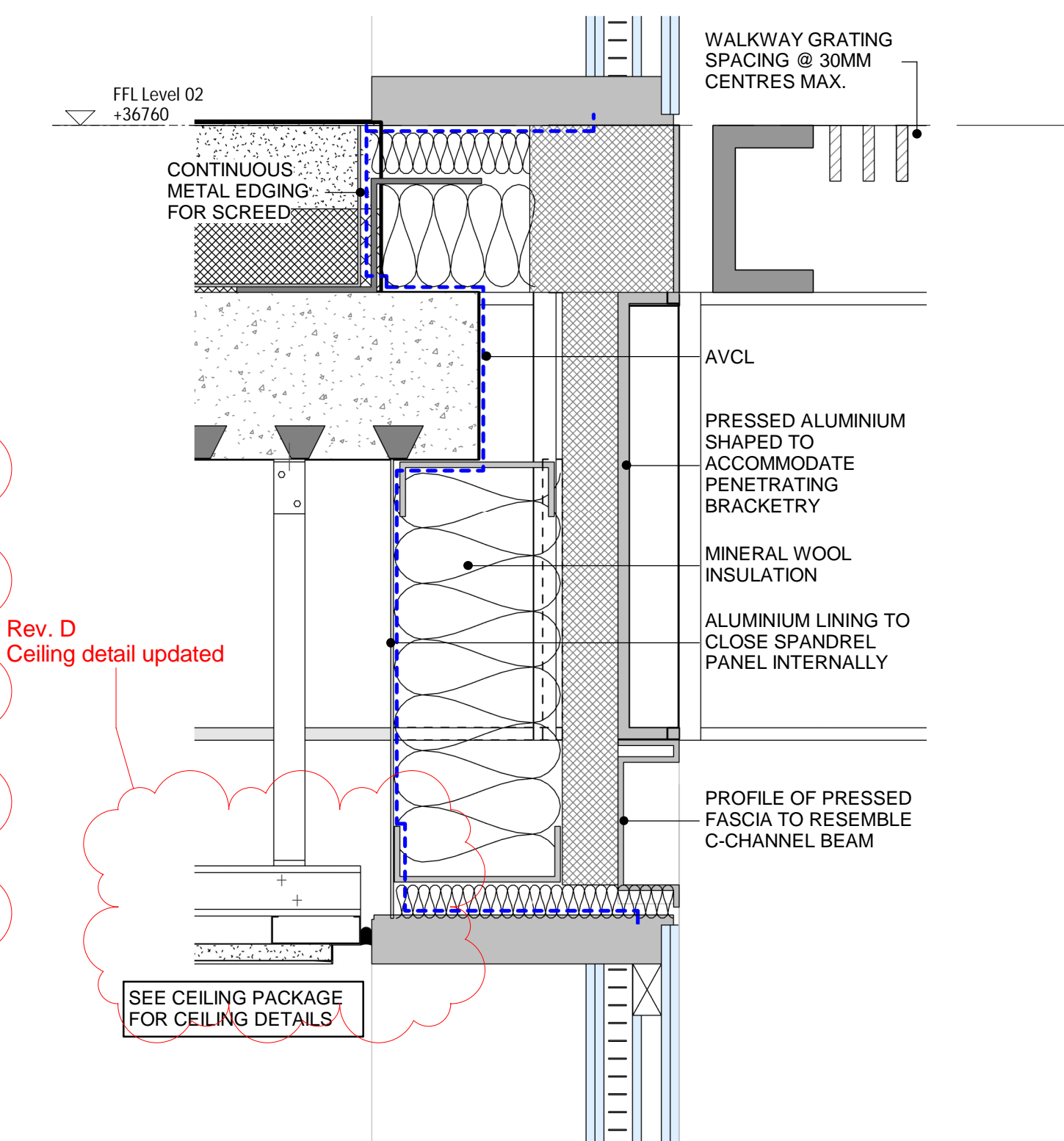
7 137603 - EWS-500 TO IWS-200 JUNCTION
1:5



8 137603 - EWS-500 CORNER SPANDREL
1:5

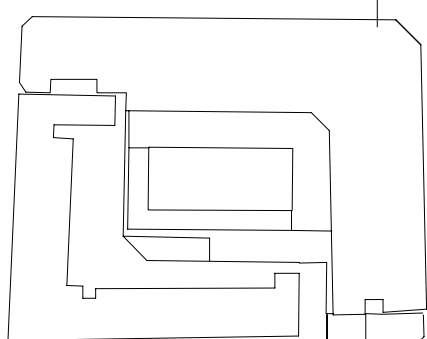


3 137603 - ATRIUM FACING COURTYARD SPANDREL SECTION
1:5



6 137603 - COURTYARD EXTERNAL SPANDREL SECTION
1:5

NOTES:



ALL REVISIONS





Rev	DATE	REVISION HISTORY	Dsg	Drw	Chk	App
D	11.11.16	100% Stage E issue.	STW	SL	RM	KB
C	15/08/16	Revised 90% issue in response to comments.	STW	RM	KB	KB
B	18/07/16	Issued For Facade Tender	STW	MB	RM	KB
A	06/07/16	Issued For Facade Tender	STW	MB	RM	KB



Head Office:
Elizabeth House,
39 York Road,
London, SE1 7NQ.
Tel:020 7401 0020
Fax:020 7401 0030
www.bouygues-uk.com

University College London Hospitals NHS Foundation Trust

Name	Signature	Date
Designed by	STW	11.11.16
Drawn by	SL	11.11.16
Checked	RM	11.11.16
Approved	KB	11.11.16

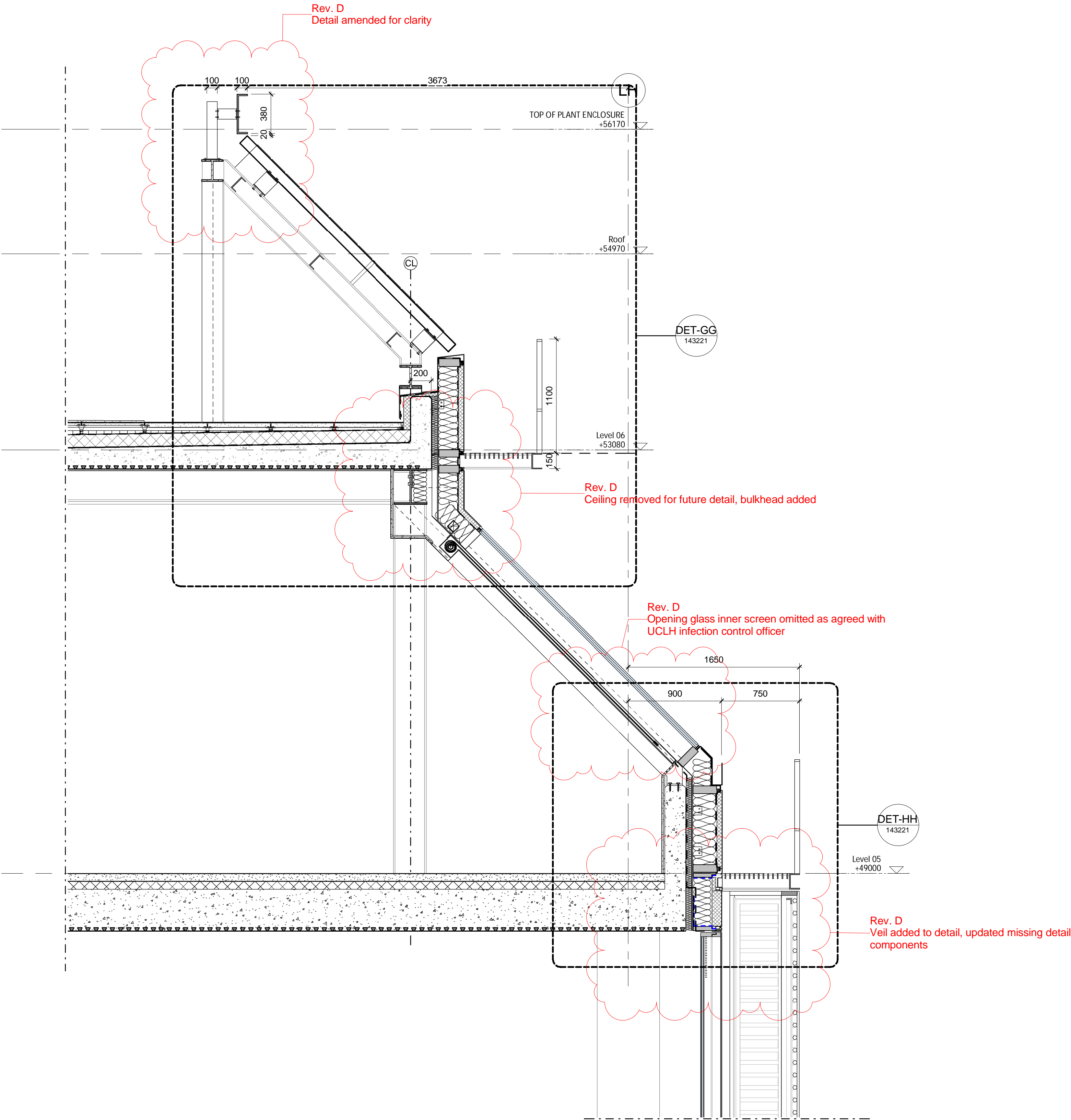
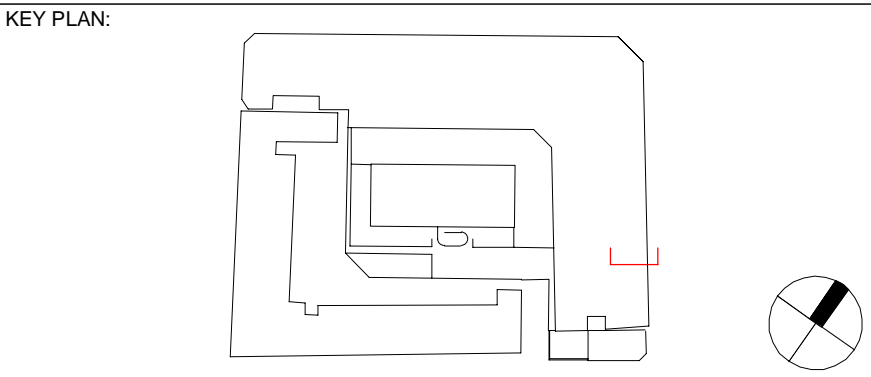
ORIGINATOR Scott Tallon Walker Architects		 	
	NG Bailey	CampbellReith	 Particle Therapy
SCALE 1 : 5	@ A1	BIM FILE NAME P4PBT-STW-AAG-SL-M3-A31-100060	
FIRST ISSUE DATE 2016.07.06	PROPOSED STATUS For Procurement		

DRAWING TITLE

UCLH Phase 4 & PBT

TYPICAL SPANDREL PANELS 3

PROJECT	ISSUER	AREA	LEVEL	TYPE	TRADE	SEQUENCE	REV
P4PBT	STW	AAB	SL	DET	A31	137603	D



SEC-AA Roof-5th and 6th Floor
143215 1 : 25

NOTES:

ALL REVISIONS

D	11.11.16	100% Stage E issue.	STW	SL	RM	KB
C	01/08/16	Updated to Byuk Comments and Issued for 90% Review	STW	CB	MK	KB
B	18/07/16	Issued For Tender	STW	STW	BYUK	BYUK
A	06/07/16	Issued For Facade and Roof Tender	STW	STW	BYUK	BYUK
Rev	DATE	REVISION HISTORY	Dsg	Drw	Chk	App



Head Office:
Elizabeth House,
39 York Road,
London, SE1 7NQ.
Tel: 020 7401 0020
Fax: 020 7401 0030
www.bouygues-uk.com

University College London Hospitals **NHS**
NHS Foundation Trust

	Name	Signature	Date
Designed by	STW		11.11.16
Drawn by	SL		11.11.16
Checked	RM		11.11.16
Approved	KB		11.11.16

ORIGINATOR

Scott Tallon Walker Architects
NG Bailey CampbellReith
VARIAN medical systems Particle Therapy

SCALE	@ A1	BIM FILE NAME
1 : 25		P4PBT-STW-AFA-SL-M3-A31-100060
FIRST ISSUE DATE	PROPOSED STATUS	
2016/07/06	For Procurement	

DRAWING TITLE

UCLH Phase 4 & PBT
Roof Package Section AA Through 5th and 6th Floor

PROJECT	ISSUER	AREA	LEVEL	TYPE	TRADE	SEQUENCE	REV
P4PBT	STW	AFA	06	SEC	A31	143215	D