

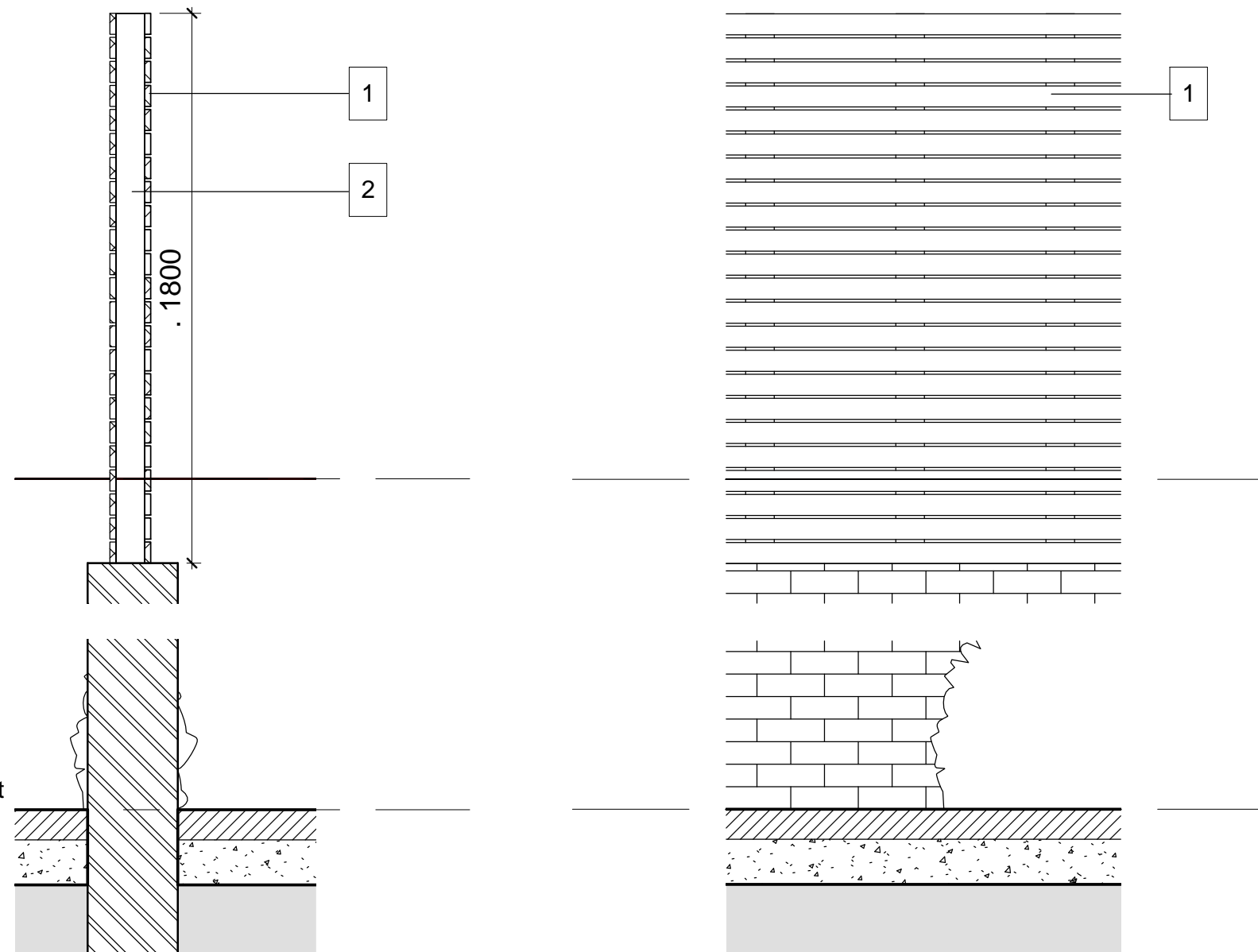
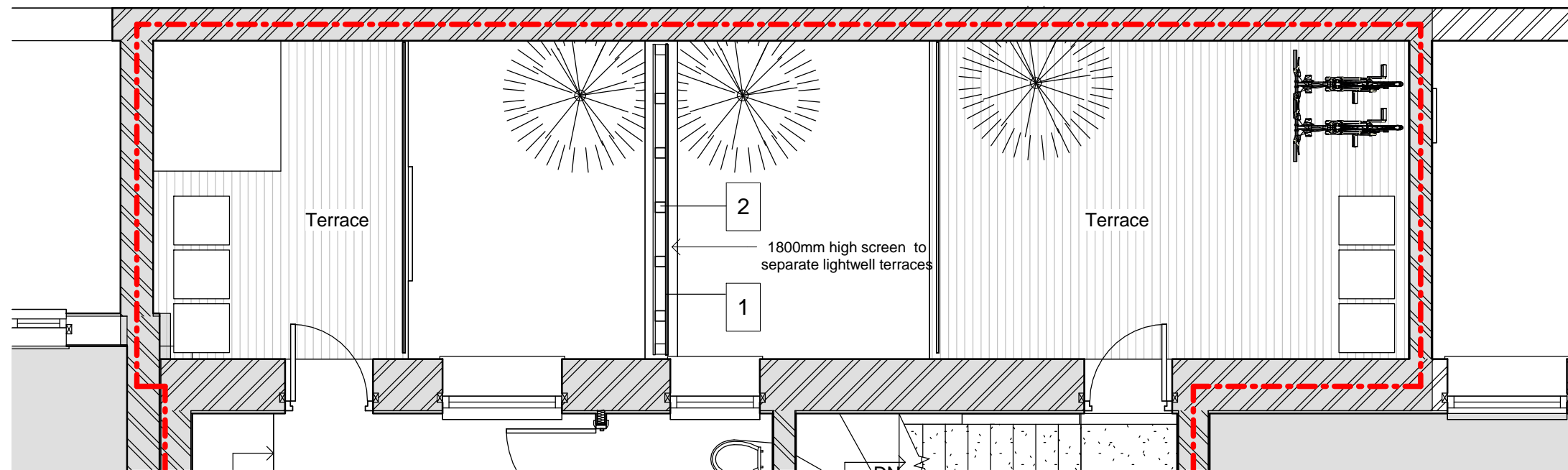
DO NOT SCALE FROM THE DRAWING.  
ALL DIMENSION TO BE CHECKED ON SITE.  
COPYRIGHT RESERVED.

KEY:

- 1 70 x 20 mm Red cedar timber boards
- 2 95x95mm treated timber battens



Treated Red Cedar



00 - Level 0  
0

-01 - Basement  
-2780

REV/ISSUE	NOTE	DRN	DATE

SCALE	DATE	DRN	CHK
1:20@A3	11.01.2018	SR	MH

PROJECT  
17, New North Street,  
WC1N 3PJ

DRAWING  
Planning Condition No 6 -  
Amenity Space screening

**bubble** architects  
STUDIO 205 THE BUSWORKS  
39-41 NORTH ROAD  
LONDON N7 9DP  
WWW.BUBBLEARCHITECTS.CO.UK

JOB NO	DRAWING NO	REV
017017	P-00-PL-006	