

DO NOT SCALE FROM THIS DRAWING. CONTRACTOR TO CHECK ALL DIMENSIONS ON SITE. ANY DISCREPANCIES TO BE REPORTED TO THE ARCHITECT IMMEDIATELY.

WT A1/A2  
LE.W.1.02

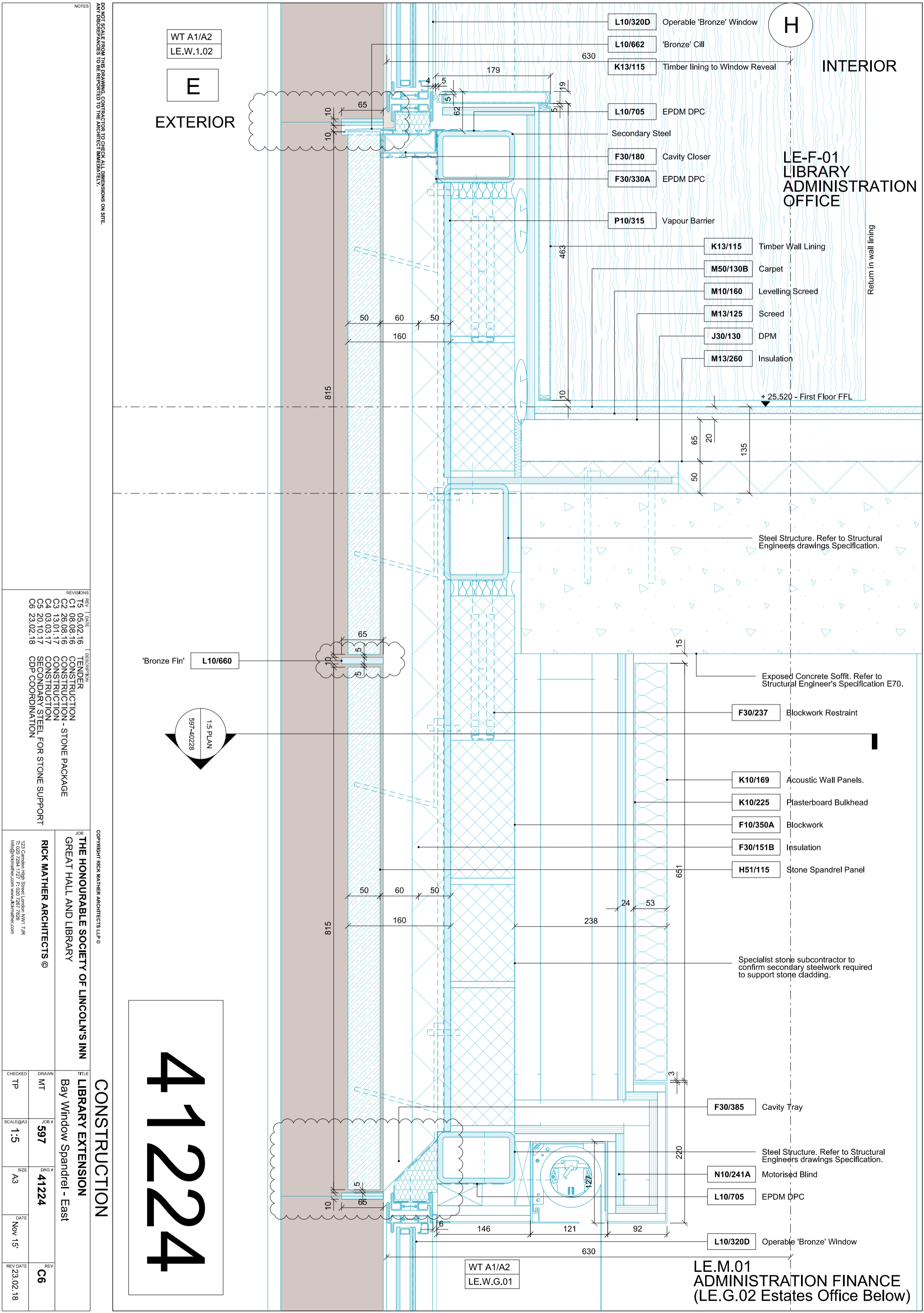
**E**

EXTERIOR

**H**

INTERIOR

LE-F-01  
LIBRARY  
ADMINISTRATION OFFICE



| REV | DATE     | DESCRIPTION                       |
|-----|----------|-----------------------------------|
| T5  | 05.02.16 | TENDER                            |
| C1  | 08.08.16 | CONSTRUCTION - STONE PACKAGE      |
| C2  | 26.08.16 | CONSTRUCTION                      |
| C3  | 13.01.17 | CONSTRUCTION                      |
| C4  | 03.03.17 | CONSTRUCTION                      |
| C5  | 20.10.17 | SECONDARY STEEL FOR STONE SUPPORT |
| C6  | 23.02.18 | CDP COORDINATION                  |

COPYRIGHT RICK MATHER ARCHITECTS LLP ©

THE HONOURABLE SOCIETY OF LINCOLN'S INN  
GREAT HALL AND LIBRARY

RICK MATHER ARCHITECTS ©

123 Camden High Street London, NW1 7AR  
T: 020 7284 1727 F: 020 7287 7828  
info@rickmather.com www.rickmather.com

| CHECKED  | DRAWN | TITLE   |
|----------|-------|---|
| TP       | MT    | LIBRARY EXTENSION<br>Bay Window Spandrel - East |
| SCALE    | JOB # |   |
| A3       | 597   |   |
| SIZE     | DRG # |   |
| A3       | 41224 |   |
| DATE     | REV   |   |
| Nov '15  | C6    |   |
| REV DATE |       |   |
| 23.02.18 |       |   |

**41224**

LE.M.01  
ADMINISTRATION FINANCE  
(LE.G.02 Estates Office Below)

WT A1/A2  
LE.W.G.01