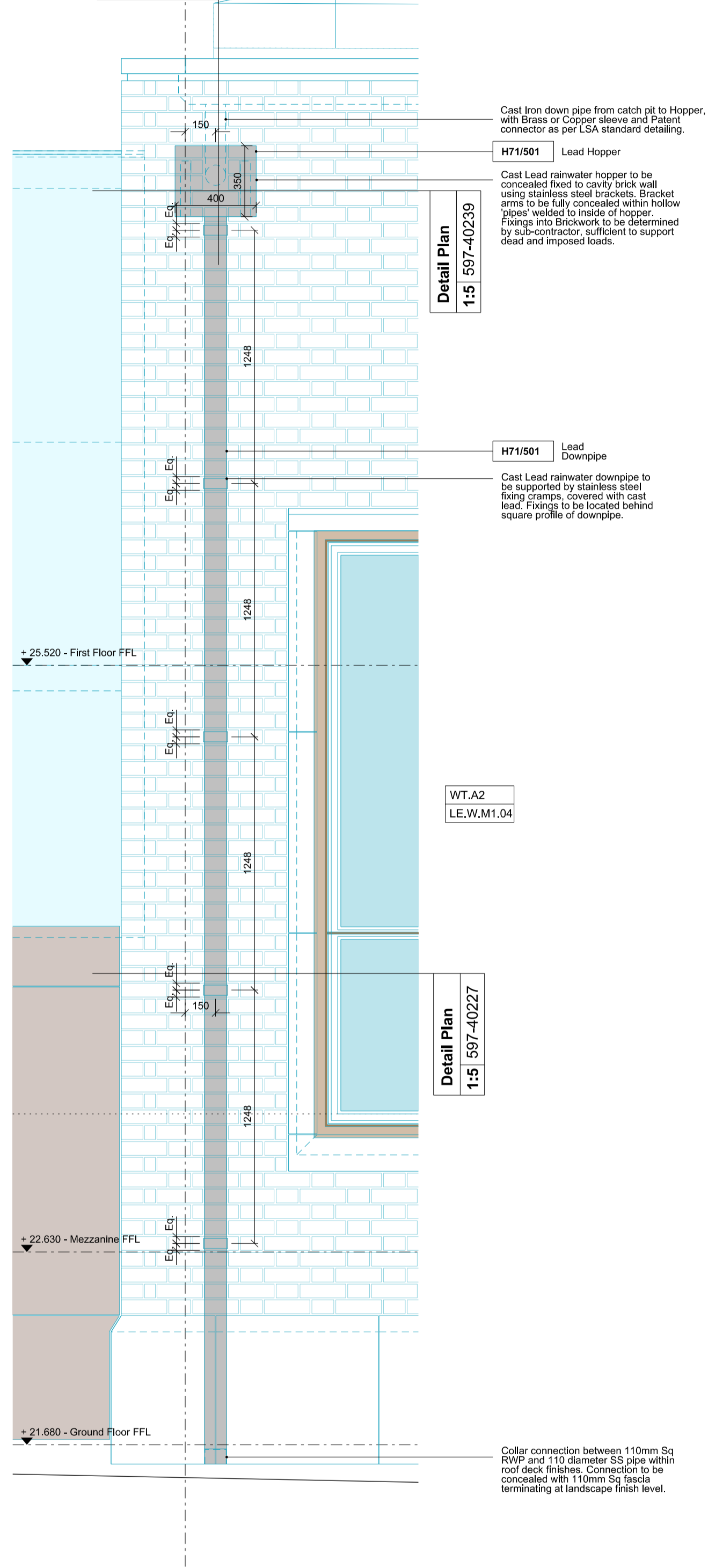


15

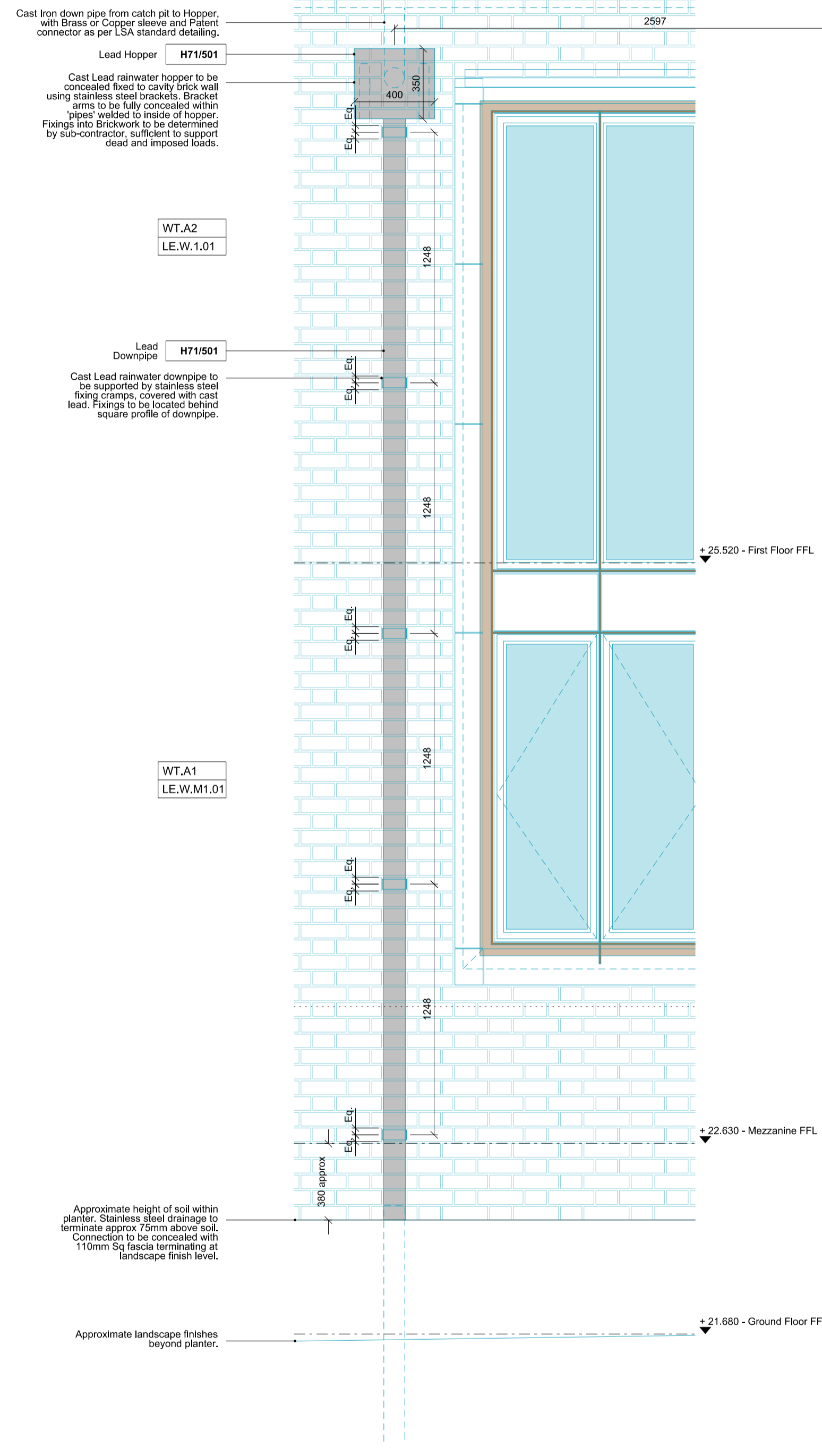
1:5 597-41213
Detail Section



Lead Downpipe & Hopper - EAST ELEVATION

01 597-15215

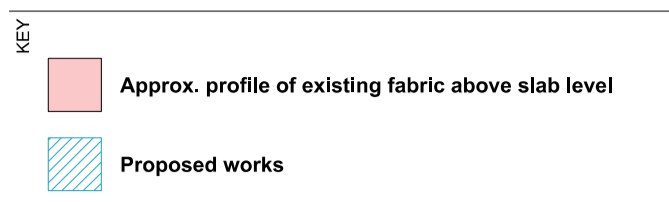
15



Lead Downpipe & Hopper - NORTH ELEVATION

02 597-15215

NOTES
DO NOT SCALE FROM THIS DRAWING.
CONTRACTOR TO CHECK ALL DIMENSIONS ON SITE.
ANY DISCREPANCIES TO BE REPORTED TO THE ARCHITECT IMMEDIATELY.
COPYRIGHT RICK MATHER ARCHITECTS LLP ©



This drawings is to be used for coordination only, and must be read in conjunction with all relevant RMA Construction Issue specifications, schedules and drawings, notably:

- Refer to 13200 Series for Internal Room Elevations
- Refer to 14200 Series for Internal Component Drawings
- Refer to 15200 Series for External Component Drawings
- Refer to 16200 Series for Furniture
- Refer to 17200 Series for Landscape Drawings
- Refer to Schedule 51001 for Internal Door Schedule
- Refer to Schedule 51002 for Window Schedule
- Refer to Schedule 51003 for Rooflight Schedule
- Refer to Schedule 51004 for Glazed Screen Schedule
- Refer to Schedule 51005 for External Louvre Schedule
- Refer to Schedule 51008 for Sanitaryware Schedule
- Refer to Schedule 51007 for Ironmongery Schedule
- Refer to Schedule 51006 for Access Control Schedule

- Grid & slab setting-out plans - 14600'S SERIES
- Visual formwork setting-out plans - 14610'S SERIES
- Brick blockwork 14620'S SERIES & stonework 14630'S SERIES setting-out plans
- Partition setting-out plans - 14640'S SERIES
- Floor finishes & raised access floor setting-out plans - 14650'S SERIES
- Reflected ceiling plans - 14660'S SERIES
- Builders work drawings - 14670'S SERIES
- Relevant Architect's details

All East Terrace & Library Extension structural elements are indicated for setting-out purposes only, and should be read in conjunction with:

- EOC's full Construction Issue drawing package and specification (including the EOC visual concrete spec.)
- AECOM's full Construction Issue drawing package and specification

All below ground drainage elements are indicated for the setting-out of penetrations through structural elements only, and should be read in conjunction with:

- IDS's full Construction Issue drawing package and specification.

All slab penetrations have been set out in accordance with the above ground drainage design as described in MMD's Technical Design Issue dated 16.06.16.

PLEASE NOTE:
Drawings of the existing buildings have been based on survey information known to include inaccuracies. Do not dimension from the existing building for setting-out purposes.

Report any dimensional discrepancies found on site to the Architect immediately

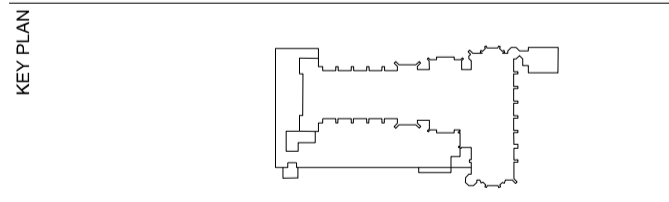
Checking dimensions are stated for coordination only, not for primary setting out principles.

Unless noted otherwise, columns and shear walls are to be set out centred on grid.

This drawing is to be read in colour.

REVISIONS

REV	DATE	DESCRIPTION
C1	20.08.18	CONSTRUCTION



STATUS
CONSTRUCTION

RICK MATHER ARCHITECTS ©

123 Gordon Way, Street London N1 1AA
T: 020 7248 1232 F: 020 7248 1233
R.M.A@rma-architects.com www.rma-architects.com

JOB
**THE HONOURABLE SOCIETY OF LINCOLN'S INN
GREAT HALL AND LIBRARY**

TITLE
**LIBRARY EXTENSION
LEAD DOWNPIPES & HOPPERS**

DRAWN	JOB #	DRG #	REV
MT	597	51215	C1

CHECKED	SCALE@A1	SIZE	DATE	REV/DATE
TP	1:20 1:40	A1 A3	AUG 18'	20.08.18