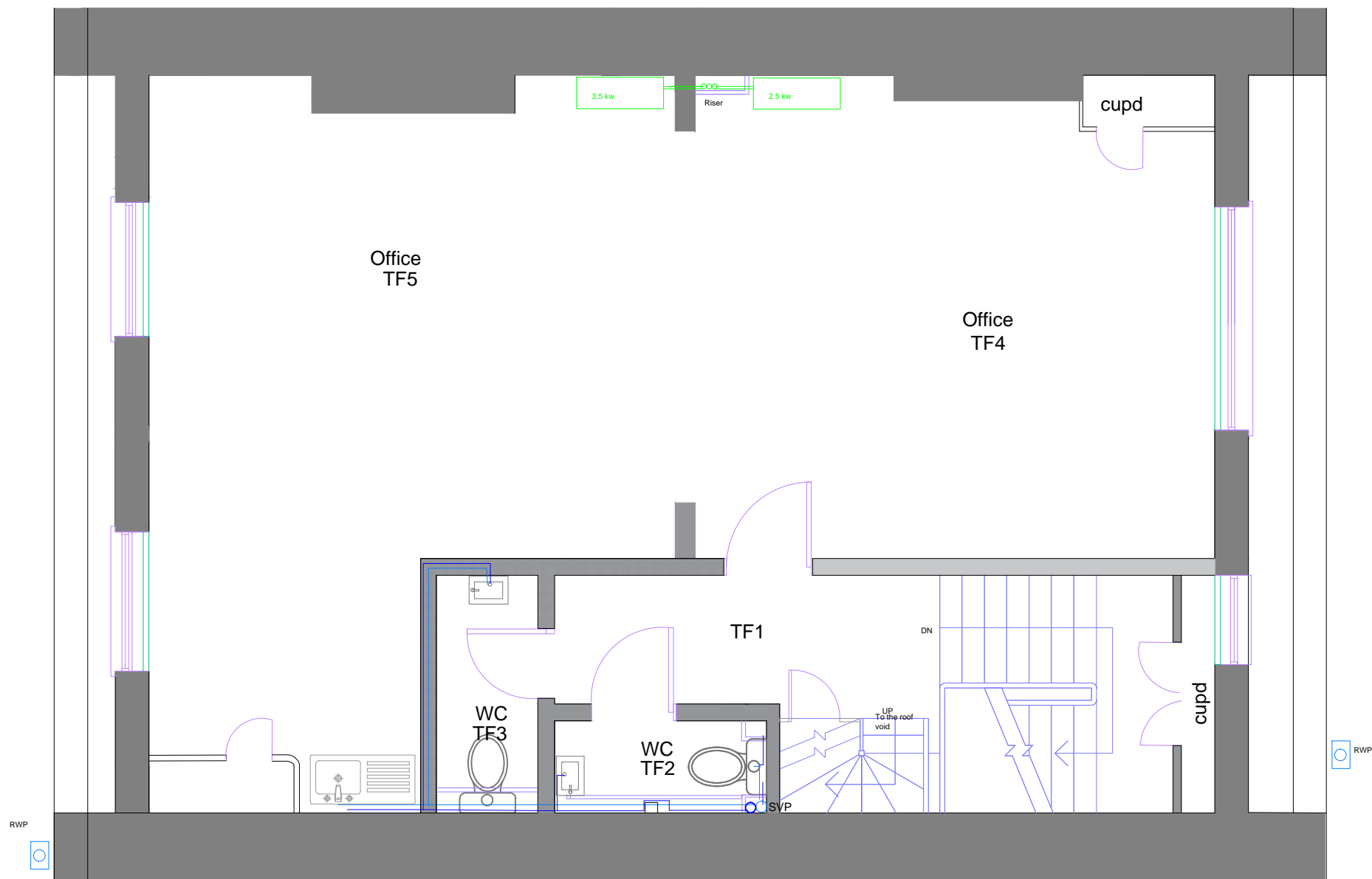


- Note:
1. This drawing is copyright.
 2. Contractors must check all dimensions on site.
 3. Figured dimensions are to be used in preference to scaled dimensions.
 4. Discrepancies must be reported immediately.



| Tills | |
|------------------------------------|---------------|
| Surface mounted fluorescent light | |
| Light switch - single rocker | |
| Light switch - dimmer | |
| Light switch - double rocker | |
| Wall light fitting | |
| Double switch socket outlet | |
| Dome ceiling or wall mounted light | |
| Electric Paneled Radiator | |
| Fire alarm break glass call point | |
| Fire alarm panel | |
| Intruder alarm | |
| Distribution Board | |
| Smoke Detector | |
| Chandelier | |
| Air Cooling | |
| Emergency Light fitting | |
| Entry Phone | |
| Ventilation extract diffuser | |
| Fire extinguisher | |
| Fire alarm sounder | |
| Drainage gully | |
| MH drainage inspection chamber | |
| Steel Beam | |
| Stud partition | |
| FD | Fire Door |
| EX | Existing Door |
| D | Door |

| REVISION | DATE | DESCRIPTION | BY |
|----------|------|-------------|----|
| | | | |

MATTHEWS & SON LLP
Chartered Surveyors
26 Bedford Square, London, WC1B 3HP

PROJECT
**87 GOWER STREET,
LONDON, WC1E 6AF**

DETAIL
**Proposed Third Floor
Mechanical Services**

DATE 27/04/2018 DRAWN BY HAB
CHECKED BY

SCALE 1:50 @ A3

DRAWING NUMBER REVISION
13002/3/125

