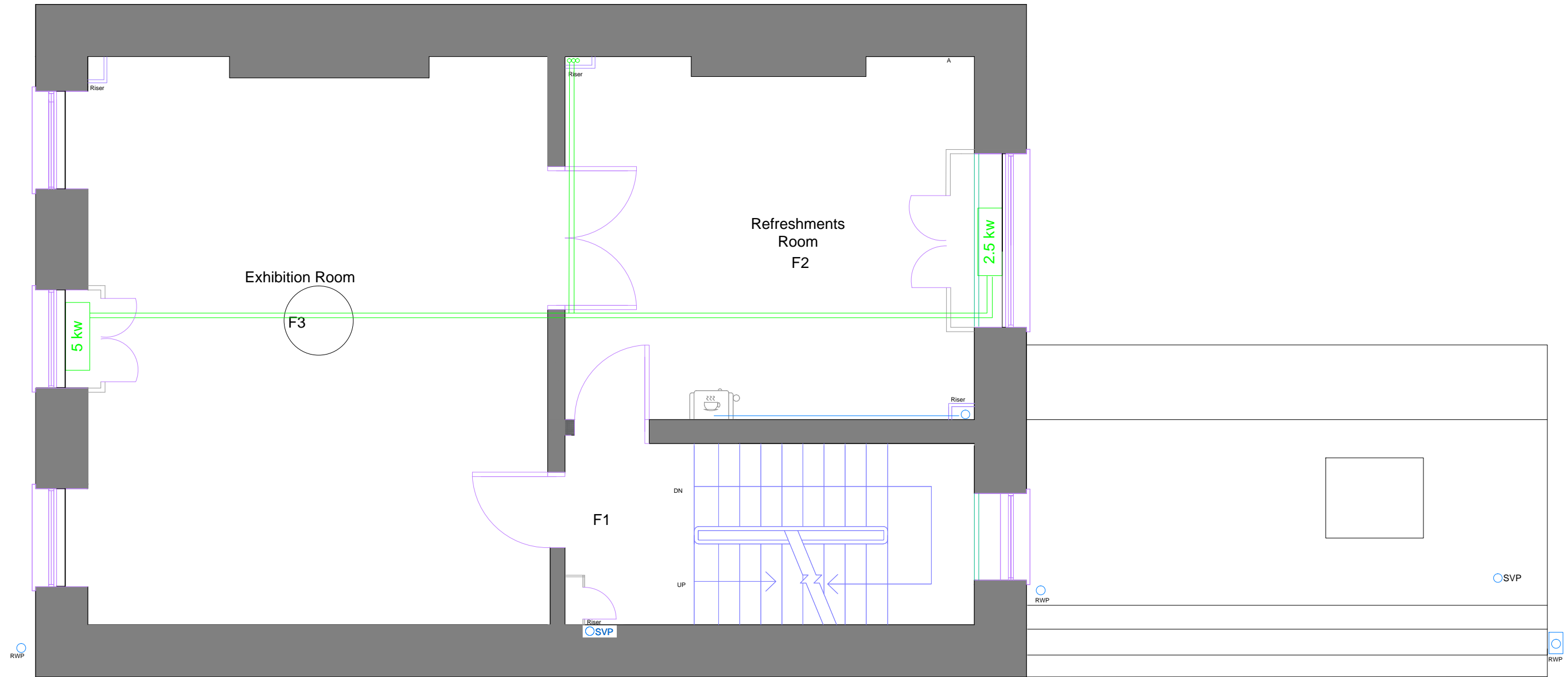


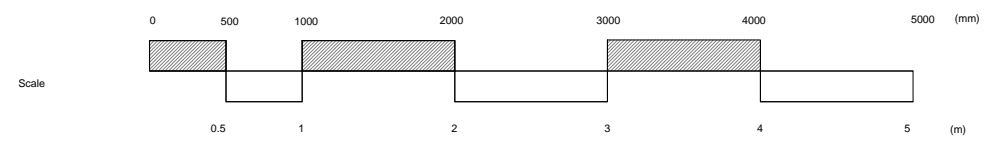
- Note:
1. This drawing is copyright.
 2. Contractors must check all dimensions on site.
 3. Figured dimensions are to be used in preference to scaled dimensions.
 4. Discrepancies must be reported immediately.



Title	Symbol
Surface mounted fluorescent light	[Symbol]
Light switch - single rocker	[Symbol]
Light switch - dimmer	[Symbol]
Light switch - double rocker	[Symbol]
Wall light fitting	[Symbol]
Double switch socket outlet	[Symbol]
Dome ceiling or wall mounted light	[Symbol]
Electric Panelled Radiator	[Symbol]
Fire alarm break glass call point	[Symbol]
Fire alarm panel	[Symbol]
Intruder alarm	[Symbol]
Distribution Board	[Symbol]
Smoke Detector	[Symbol]
Chandelier	[Symbol]
Air Cooling	[Symbol]
Emergency Light fitting	[Symbol]
Entry Phone	[Symbol]
Ventilation extract diffuser	[Symbol]
Fire extinguisher	[Symbol]
Fire alarm sounder	[Symbol]
Drainage gully	[Symbol]
M/H drainage inspection chamber	[Symbol]
Steel Beam	[Symbol]
Stud partition	[Symbol]
FD	Fire Door
EX	Existing Door
D	Door

Notes: Alteration works

- Remove existing heating system, radiators, including all pipework and associated goods.
- Install new comfort cooling system to rooms F2 and F3, 2no units to be positioned to the window recess. Pipework to be routed within the pre cut notches to the floor joists. Any fixings to the solid walls, these holes to be of minimum necessary size.
- Run pipework to cooling system through the exiting riser to the corner of F2 via existing pipework routes.
- Retain existing soil vent pipes.
- Underground drainage retained as existing.



REVISION	DATE	DESCRIPTION	BY

MATTHEWS & SON LLP
Chartered Surveyors

26 Bedford Square, London, WC1B 3HP

PROJECT
**87 GOWER STREET,
LONDON, WC1E 6AF**

DETAIL
**Proposed First Floor
Mechanical Services**

DATE: 20/03/2018 DRAWN BY: HAB
CHECKED BY:

SCALE: 1:50 @ A3

DRAWING NUMBER: **13002/3/123** REVISION: