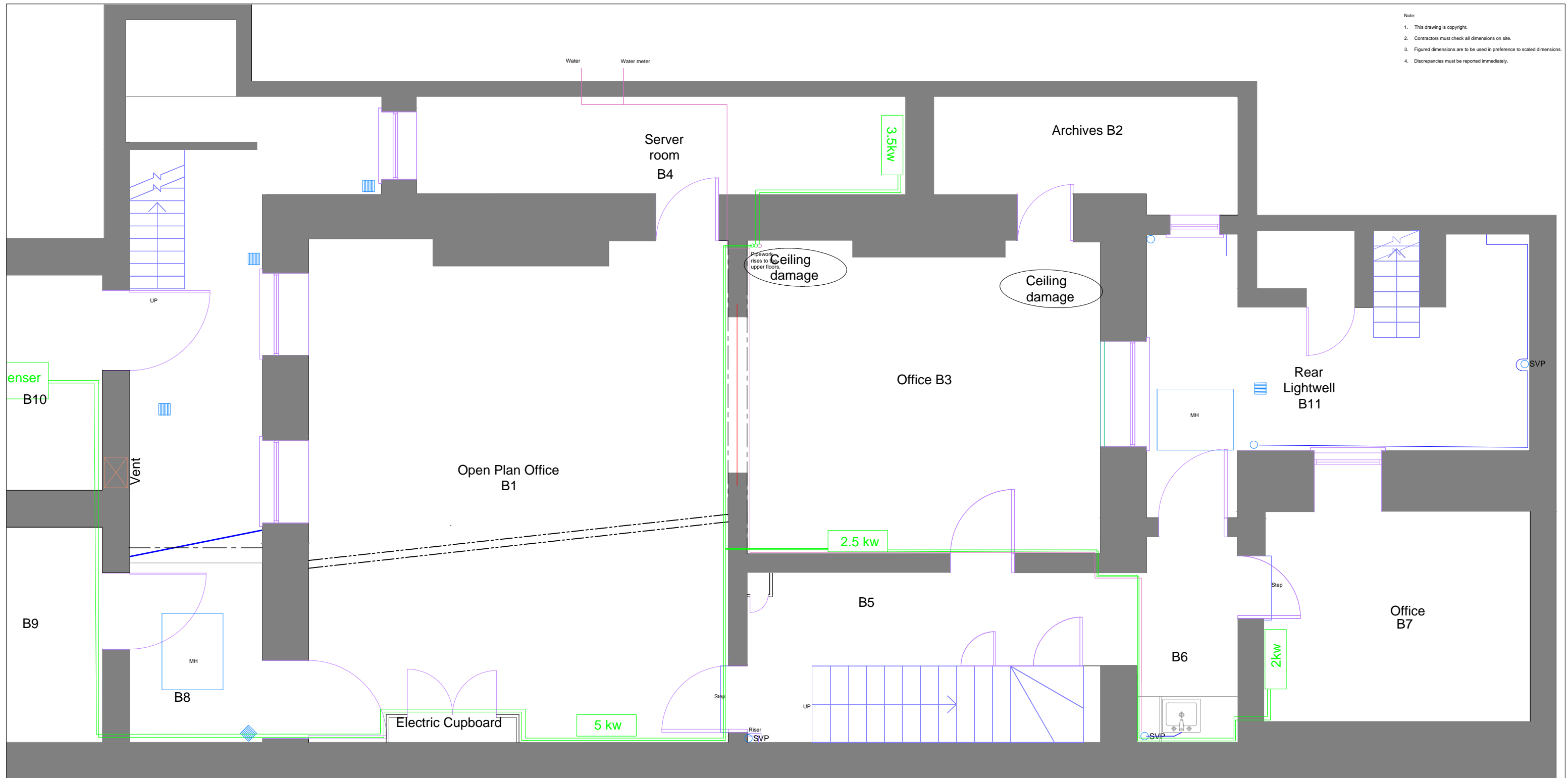
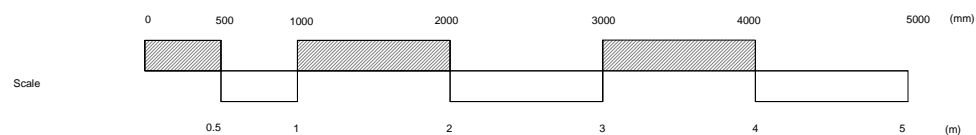


Note:  
 1. This drawing is copyright.  
 2. Contractors must check all dimensions on site.  
 3. Figured dimensions are to be used in preference to scaled dimensions.  
 4. Discrepancies must be reported immediately.



Title	Symbol
Surface mounted fluorescent light	[Symbol]
Light switch - single rocker	[Symbol]
Light switch - dimmer	[Symbol]
Light switch - double rocker	[Symbol]
Wall light fitting	[Symbol]
Double switch socket outlet	[Symbol]
Dome ceiling or wall mounted light	[Symbol]
Electric Panelled Radiator	[Symbol]
Fire alarm break glass call point	[Symbol]
Fire alarm panel	[Symbol]
Intruder alarm	[Symbol]
Distribution Board	[Symbol]
Smoke Detector	[Symbol]
Chandeller	[Symbol]
Air Cooling	[Symbol]
Emergency Light fitting	[Symbol]
Entry Phone	[Symbol]
Ventilation extract diffuser	[Symbol]
Fire extinguisher	[Symbol]
Fire alarm sounder	[Symbol]
Drainage gully	[Symbol]
MH drainage inspection chamber	[Symbol]
Steel Beam	[Symbol]
Stud partition	[Symbol]
FD	Fire Door
EX	Existing Door
D	Door

- Notes: Alteration works
- Remove existing heating system, boiler and radiators, including all pipework and associated goods.
  - Cut back gas supply and cap off at meter.
  - Retain existing water entry point and meter, supply pipework and re route to new kitchenette B6.
  - Install new comfort cooling system with condenser in under pavement vault to the front of the building and 4no internal units at high level. Pipework to be routed at high level tight to the ceiling with fixings into the solid wall and not into the lathe and plaster ceiling. Holes for pipework to be of minimum necessary size.
  - Run pipework to cooling system through the exiting riser to the corner of B3 via existing pipework routes.
  - Install kitchenette to (B6) width of unit to be 1000mm x approx depth 600, connected to the existing soil pipe.
  - Retain existing soil vent pipes and adapt for reuse to take waste from new kitchenette.
  - Underground drainage retained as existing.



REVISION	DATE	DESCRIPTION	BY

**MATTHEWS & SON LLP**  
 Chartered Surveyors  
 26 Bedford Square, London, WC1B 3HP

PROJECT  
**87 GOWER STREET,  
 LONDON, WC1E 6AF**

DETAIL  
**Proposed Basement  
 Mechanical services**

DATE	27/04/2018	DRAWN BY	HAB
SCALE	1:50 @ A3	CHECKED BY	

DRAWING NUMBER	REVISION
<b>13002/3/121</b>	