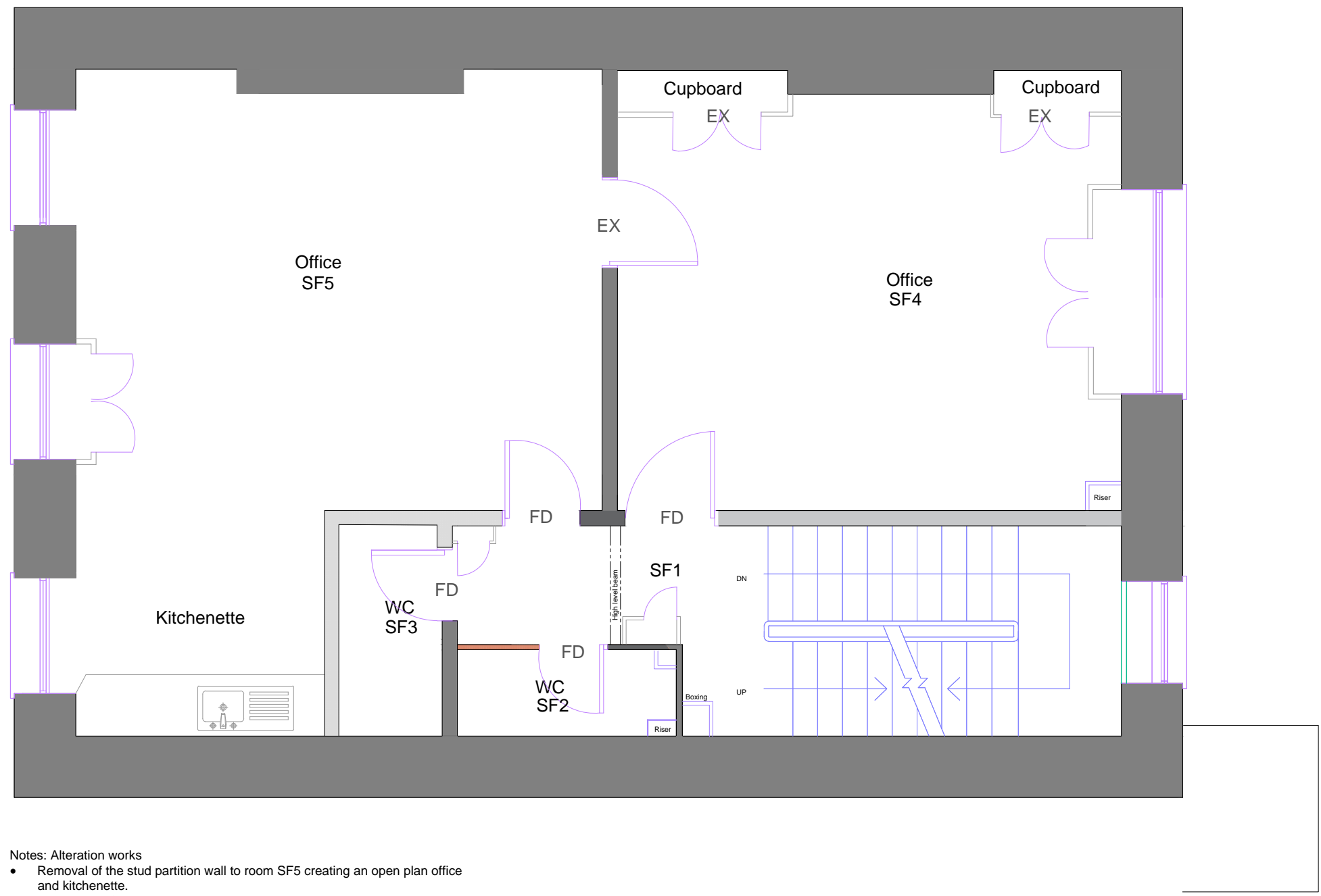
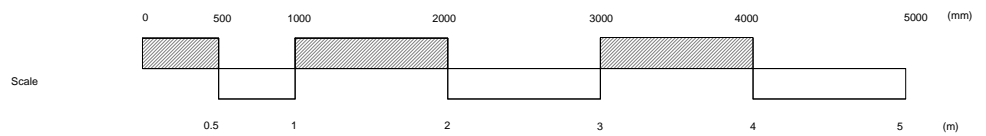


- Note:
1. This drawing is copyright.
 2. Contractors must check all dimensions on site.
 3. Figured dimensions are to be used in preference to scaled dimensions.
 4. Discrepancies must be reported immediately.

Title	Symbol
Surface mounted fluorescent light	
Light switch - single rocker	
Light switch - dimmer	
Light switch - double rocker	
Wall light fitting	
Double switch socket outlet	
Dome ceiling or wall mounted light	
Electric Paneled Radiator	
Fire alarm break glass call point	
Fire alarm panel	
Intruder alarm	
Distribution Board	
Smoke Detector	
Chandelier	
Air Cooling	
Emergency Light fitting	
Entry Phone	
Ventilation extract diffuser	
Fire extinguisher	
Fire alarm sounder	
Drainage gully	
M/H drainage inspection chamber	
Steel Beam	
Stud partition	
FD	Fire Door
EX	Existing Door
D	Door



- Notes: Alteration works
- Removal of the stud partition wall to room SF5 creating an open plan office and kitchenette.
 - Additional W/C will be created as shown to room SF3.
 - New stud partition will be at this level approx 140mm width, timber framed incorporating insulation. Finished with plywood and plasterboard over, with the joints scrimmed and skimmed.
 - Removal of the existing drop ceilings to restore heritage features and ceiling height.
 - Construct new built in units for air cooling system to rooms SF4 and SF5.
 - Fireplaces to be retained to room numbers SF4 and SF5.
 - Fire doors (FD) Supply and fit new Georgian style 6 panel oak veneered doors to be 30 minute resistant. Complete with intumescent strips. Smoke seals routed into door edges, complete with new ironmongery and over head closer's.
 - Existing doors (Ex) retain existing doors.



REVISION	DATE	DESCRIPTION	BY

MATTHEWS & SON LLP
Chartered Surveyors

26 Bedford Square, London, WC1B 3HP

PROJECT
**87 GOWER STREET,
LONDON, WC1E 6AF**

DETAIL
**Proposed Second Floor
Layout**

DATE: 08/05/2018 DRAWN BY: HAB
CHECKED BY:

SCALE: 1:50 @ A3

DRAWING NUMBER: **13002/3/103** REVISION: