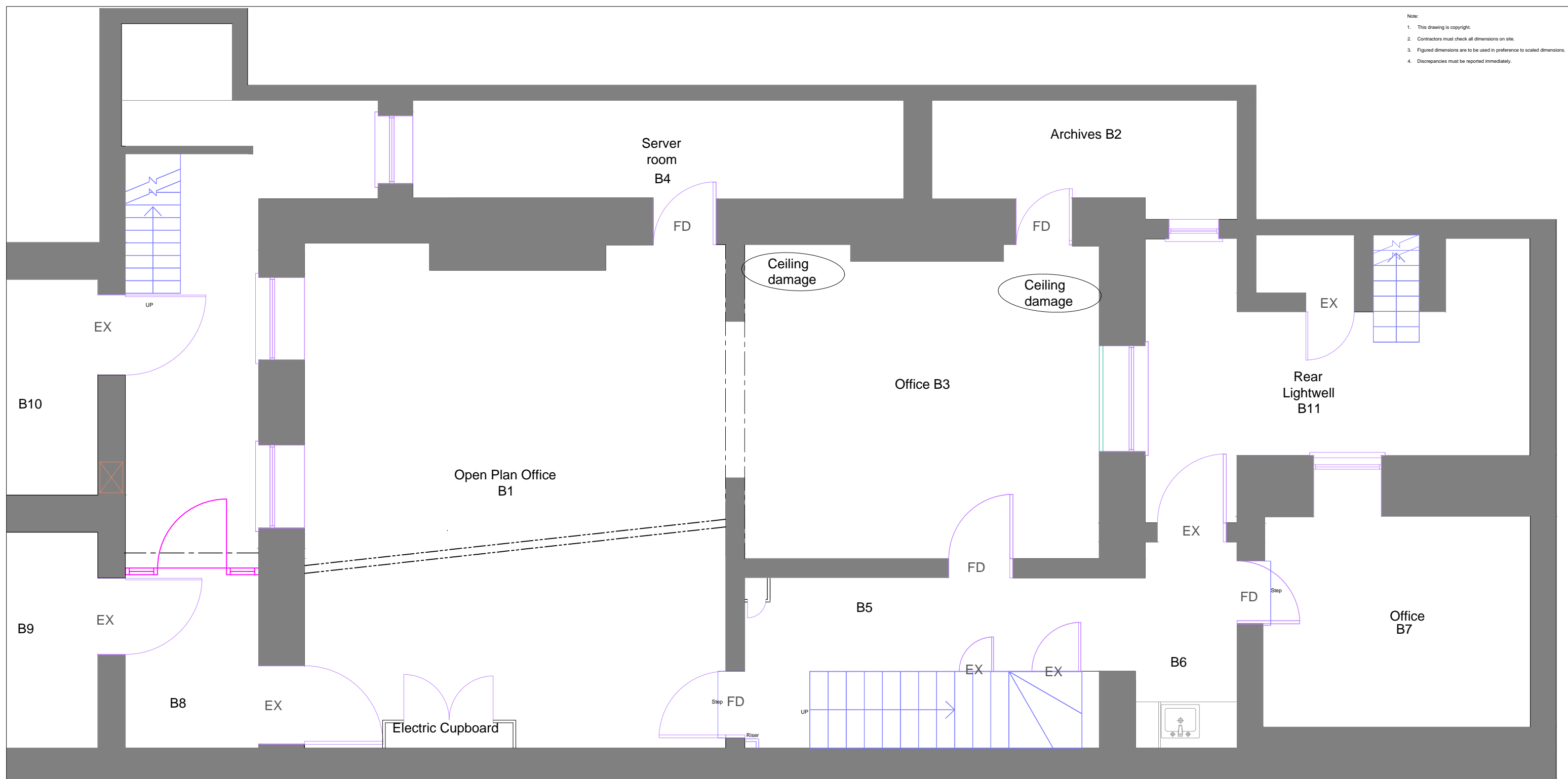
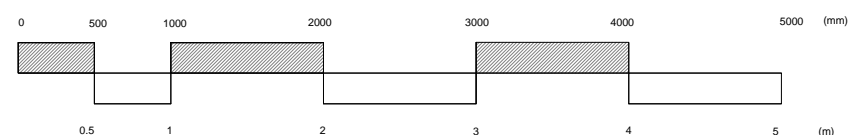


- Note:
1. This drawing is copyright.
  2. Contractors must check all dimensions on site.
  3. Figured dimensions are to be used in preference to scaled dimensions.
  4. Discrepancies must be reported immediately.



Title	Symbol
Surface mounted fluorescent light	[Symbol]
Light switch - single rocker	[Symbol]
Light switch - dimmer	[Symbol]
Light switch - double rocker	[Symbol]
Wall light fitting	[Symbol]
Double switch socket outlet	[Symbol]
Dome ceiling or wall mounted light	[Symbol]
Electric Panelled Radiator	[Symbol]
Fire alarm break glass call point	[Symbol]
Fire alarm panel	[Symbol]
Intruder alarm	[Symbol]
Distribution Board	[Symbol]
Smoke Detector	[Symbol]
Chandelier	[Symbol]
Air Cooling	[Symbol]
Emergency Light fitting	[Symbol]
Entry Phone	[Symbol]
Ventilation extract diffuser	[Symbol]
Fire extinguisher	[Symbol]
Fire alarm sounder	[Symbol]
Drainage gully	[Symbol]
MH drainage inspection chamber	[Symbol]
Steel Beam	[Symbol]
Stud partition	[Symbol]
FD	Fire Door
EX	Existing Door
D	Door

- Notes: Alteration works
- Remove the existing stud partition to front office B1.
  - Form a structural opening to the lateral wall below office B1 and B3 to the structural engineer's details. Size of opening 2040mm wide x 2200 mm high with a downstand below the ceiling of approx 500mm.
  - Construct a new doorway with glazed surround to create lobby B8 to the underside of the ground floor entrance porch. See detail drawing 13002/3....
  - Reform the electrical meter cupboard to B1 to provide fire resistant standard and to the same dimensions.
  - Retain all existing frames and architraves
  - Fire doors (FD) Supply and fit new Georgian style 6 panel oak veneered doors to be 30 minute resistant. Complete with intumescent strips. Smoke seals routed into door edges, complete with new ironmongery and over head closer's.
  - Existing doors (Ex) retain existing doors.
  - Construct boxing's with moulded cornice fronts to enclose existing retained and new high level pipework. See drawing 13002/3/120 in rooms B1, B3, B5 and B6. Add fire stopping around pipework through existing high level opening in walls below B5 and B6.
  - Open up existing window in office B7 and reuse.
  - Repair damaged sections of lath and plaster ceiling to the corner of B1, to be carried out in a sensitive manner using certain materials and concentrated to the water staining.



REVISION	DATE	DESCRIPTION	BY

**MATTHEWS & SON LLP**  
Chartered Surveyors  
26 Bedford Square, London, WC1B 3HP

PROJECT  
**87 GOWER STREET,  
LONDON, WC1E 6AF**

DETAIL  
**Proposed Basement Layout**

DATE 08/05/2018 DRAWN BY HAF  
CHECKED BY

SCALE 1:50 @ A3

DRAWING NUMBER 13002/3/100 REVISION