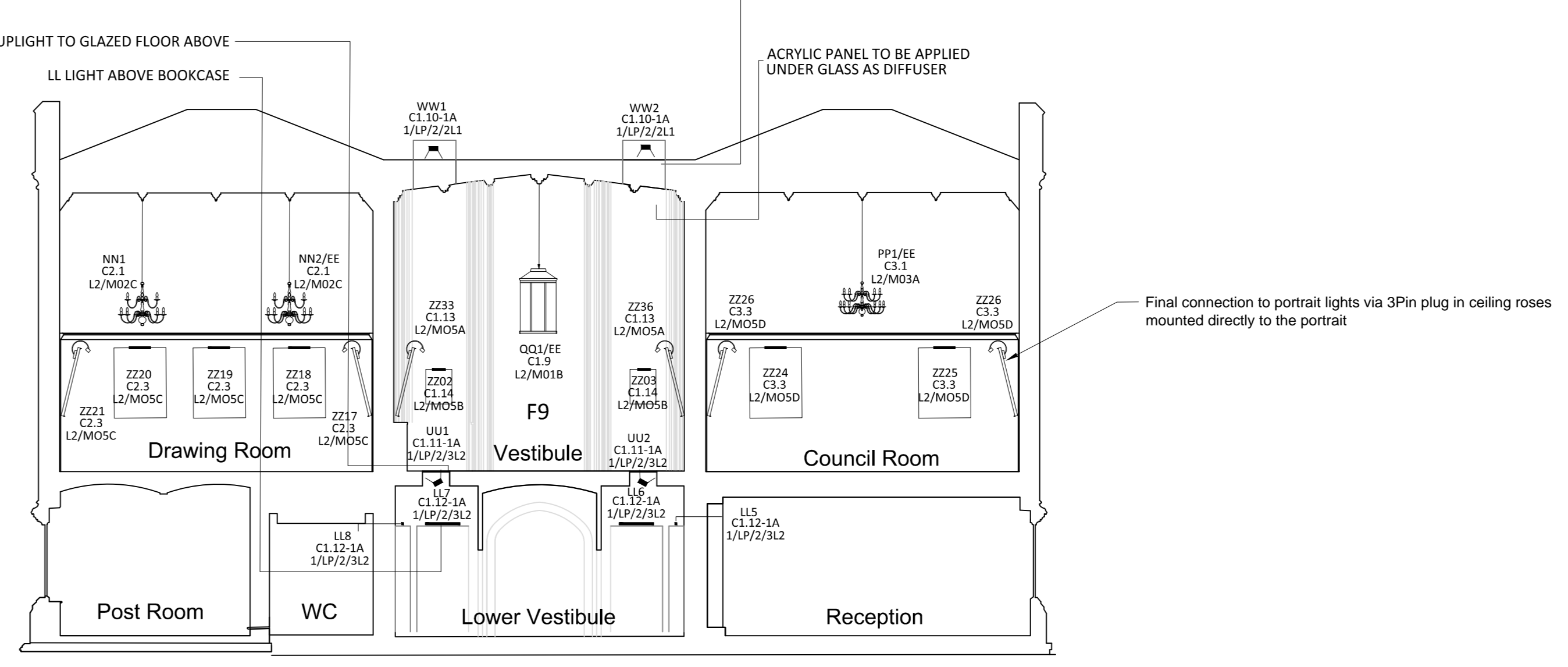
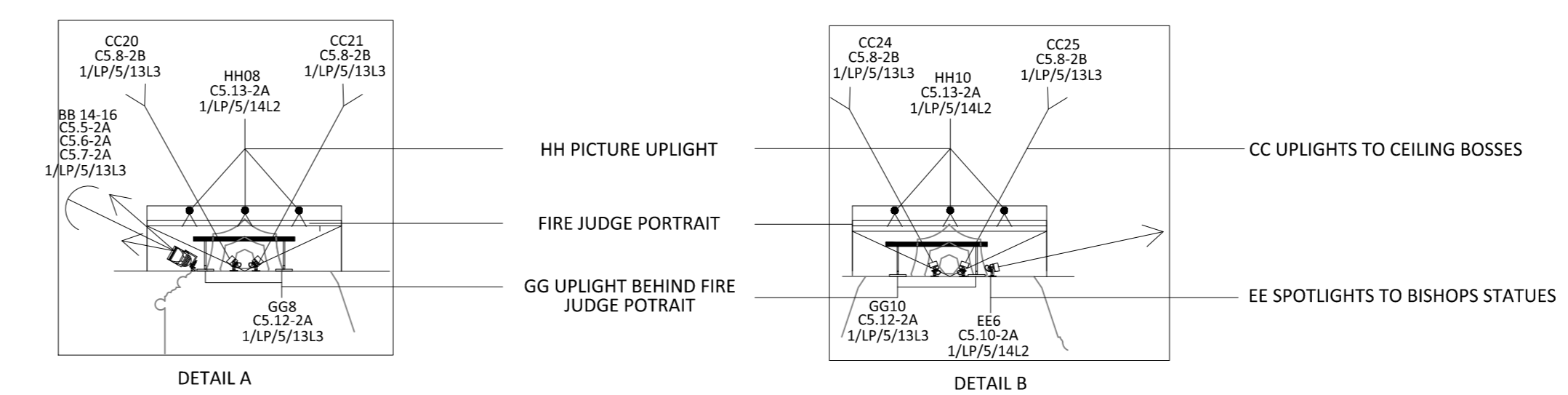
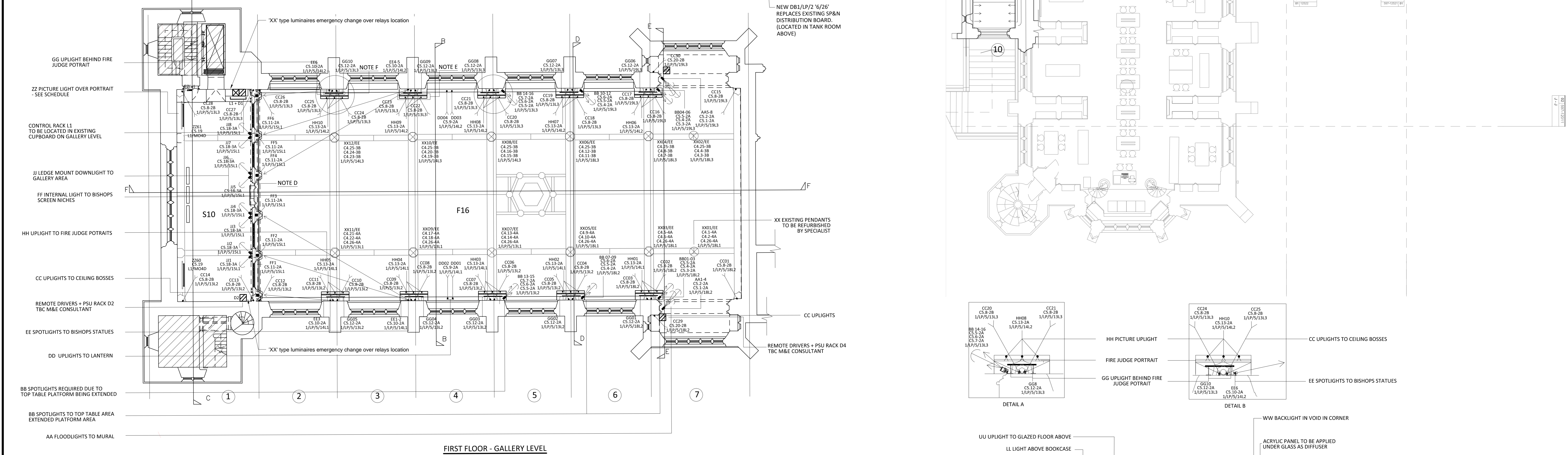
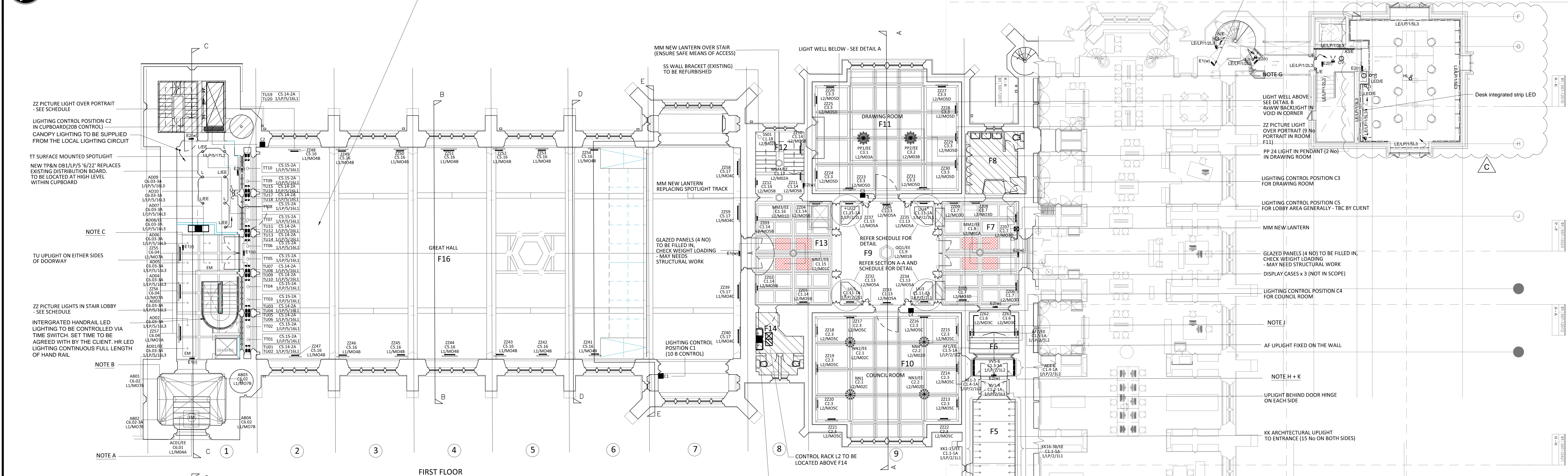


Maintained emergency EXIT illuminated luminaires within the Great Hall shall dim up and down in accordance with the selected general lighting scene. The EXIT luminaires shall not dim down further than 20% light output.

TWO EMERGENCY EXIT LUMINAIRES, ONE SHALL BE LOCATED FIRST FLOOR LEVEL AND ONE AT NORTH UPPER GALLERY LEVEL.



Notes
Do not scale from this drawing. Use only figured dimensions.
All dimensions are shown as millimetres (mm) and levels as metres above ordnance datum (mAOD) and should be verified on site.
Any drawing errors or discrepancies to be brought to the attention of Mott MacDonald at the address shown in the title block.
This drawing should be read in conjunction with the specification and all other services, structural and architectural drawings.
1. The setting out of final luminaire locations shall be as per the Architect's drawings

- Key to symbols
- LED lighting
 - LED lighting integrated into the handrail
 - Integrated LED Strip profile to the desk joinery
 - PIR link connection
 - Lighting scene plate to be provided by AV specialist
 - Manual light switch
 - Momentary action dimmer switch
 - Emergency lighting test key switch multigang switch plate to suit final number of emergency circuits
 - Passive infra-red detector
 - Daylight Photocell
 - ⊕ Denotes luminaire to be supplied with its own 3hr Emergency battery pack
 - ⊕⊕ Denotes emergency version supplied from the central battery system
 - Refer to luminaire schedule for Emergency Exit Luminaire specification.
 - E1 Maintained emergency version.
 - E2 Non maintained emergency version
 - Wireless sensor module

Mains Output Luminaire Details Example

- ⊕ QQ1 - Luminaire Type
- ⊕ C1.9 - Control Assignment
- ⊕ L2/M03B - Lighting control rack and mains output module

DALI Luminaire Details Example

- ⊕ XX07 - Luminaire Type
- ⊕ C4.5-4A - Control Assignment and DALI loop
- ⊕ C4.6-4A - Control Assignment and DALI loop
- ⊕ C4.26-4A - Control Assignment and DALI loop
- ⊕ Lighting power circuit reference

Reference drawings

Rev	Date	Drawn	Description	Chk'd	App'd
C	Jan 2017	SJ	Reading Room/Office Change		
H	Dec 2016	CP	Section 2 works omitted		
A	July 2016	CP	Technical Design Issue		

Demeter House
Station Road
Cambridge, CB1 2RS
United Kingdom

Mott MacDonald

T +44 (0)1223 461000
F +44 (0)1223 461007
W www.mottmac.com

Client
The Honourable Society of Lincoln's Inn

Title
**Great Hall & Library Project
Electrical Services
First Floor
General and Heritage Lighting Layout**

Designed	C. Potter	Eng check	A. Coates
Drawn	J. Milton	Coordination	A. Long
Dwg check	D. Kemp	Approved	T. Bradford
Scale at AD	1:100	Status	TDI
Scale at DD	1:100	Rev	C
Scale at SD	1:100	Security	STD
Drawing Number	MMD-348908-E-DR-GH-FF-2104		

