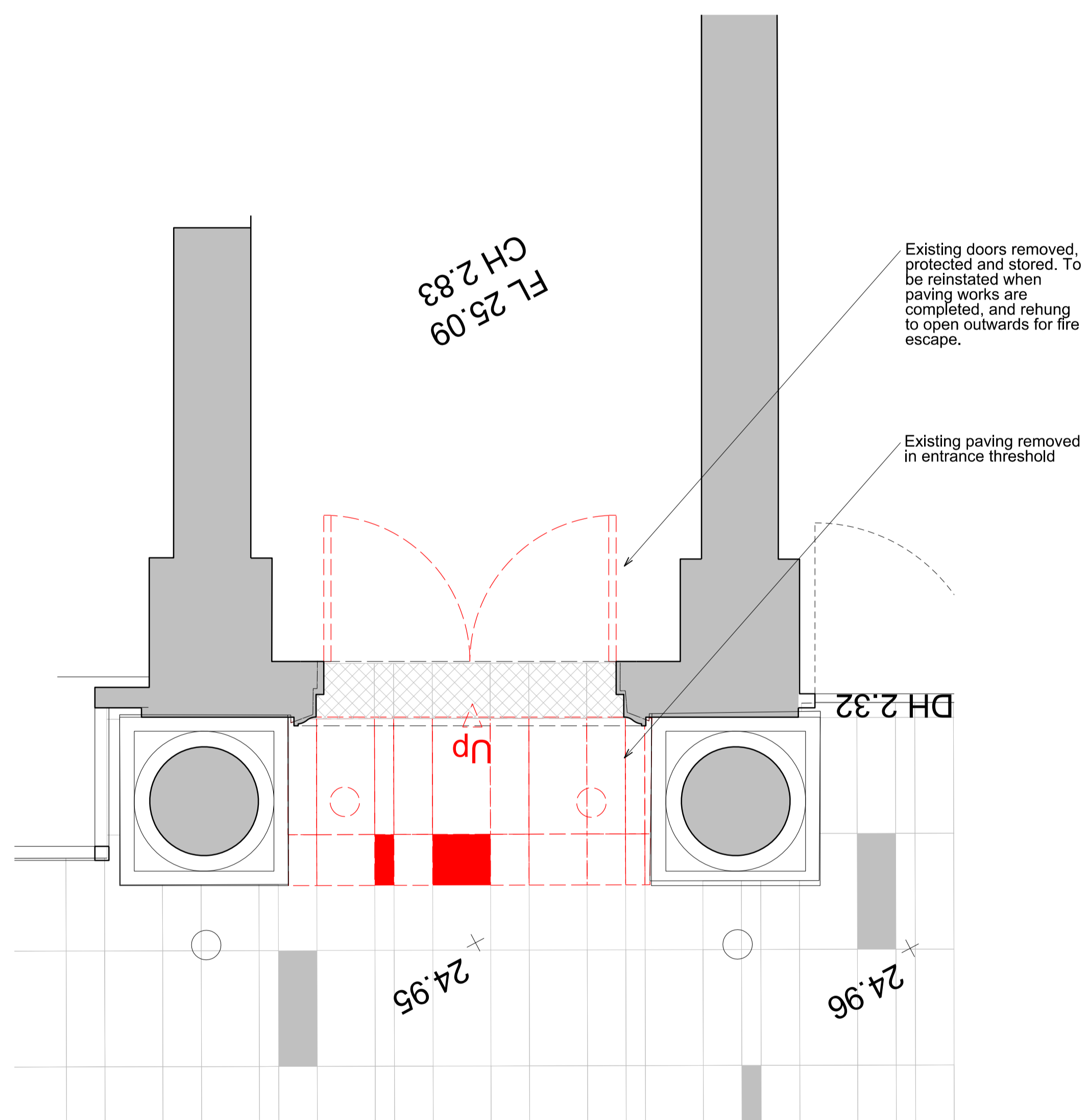
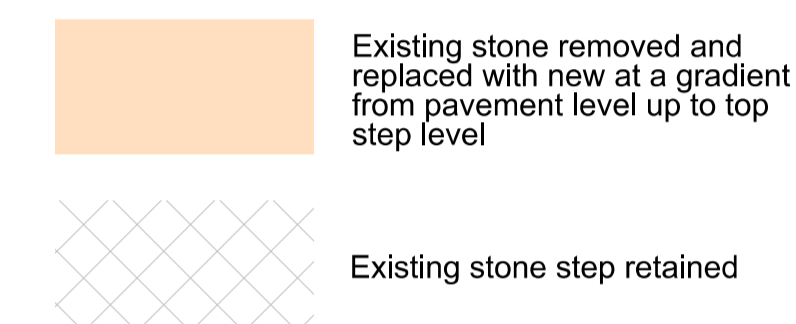
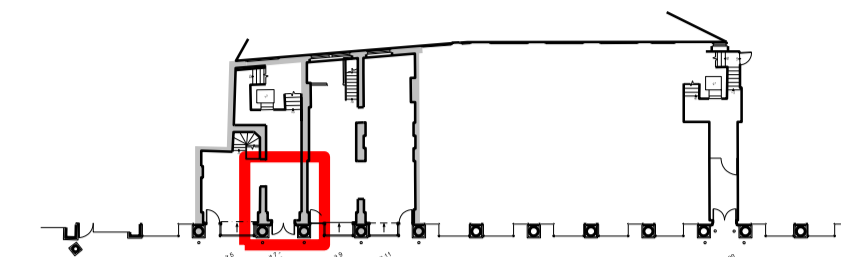


**DO NOT SCALE THIS DRAWING**

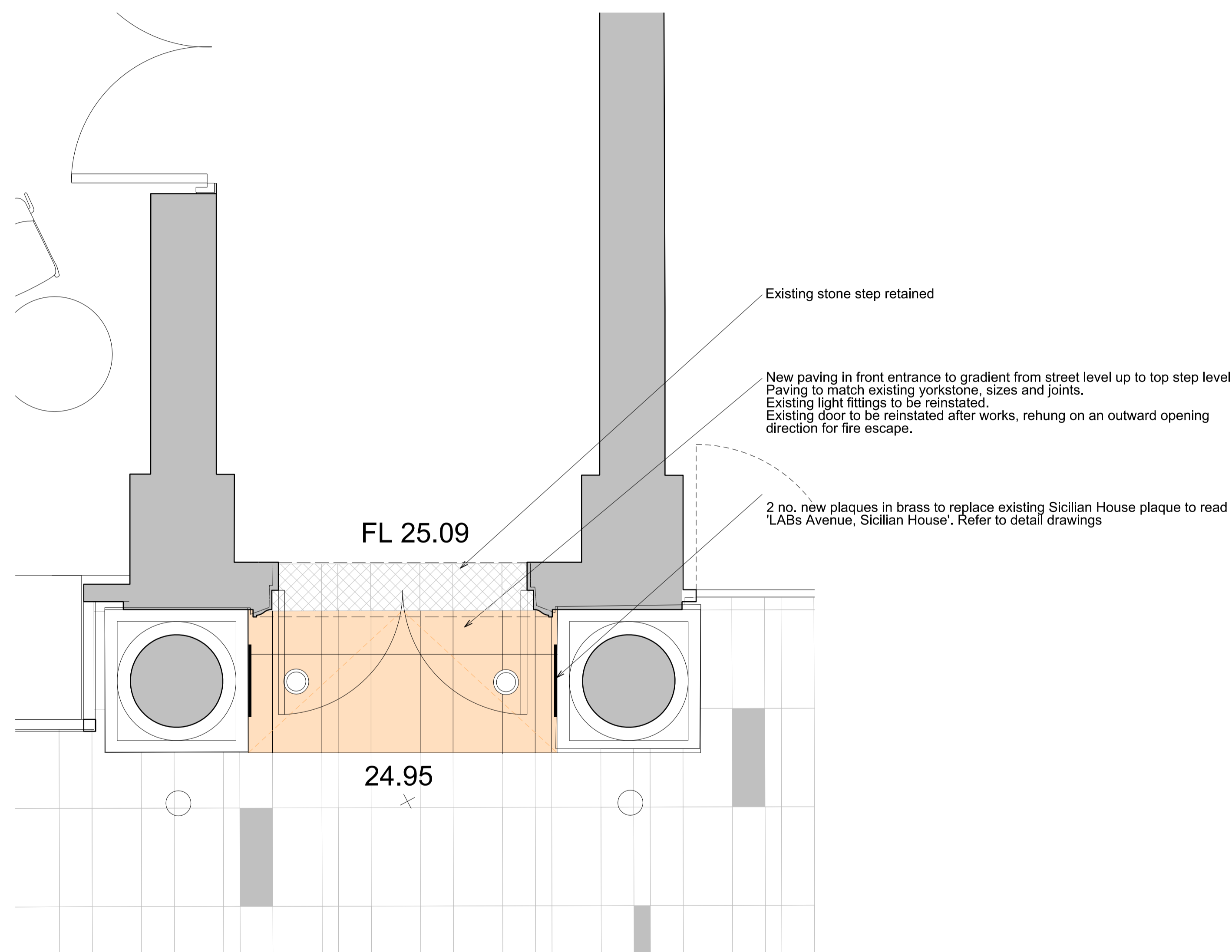
Contractors are to check all dimensions prior to commencement on site and notify the architect of any errors, omissions, or discrepancies.

TateHindle Limited retain copyright of this drawing. It may not be copied, altered or reproduced in any way without their written authority.

**Key Plan 1:500 @ A1**



01 Sicilian House Entrance - Alterations



02 Sicilian House Entrance - Proposed

01	Stage 3 Draft Issue	10-06-18	HEG	SB
00	First Issue for planning	30-07-18	HEG	SB
Rev	Description	Date	Drawn	Checked

Status  
**FOR INFORMATION**

Client  
LABs Holborn

Project  
LABs Sicilian Avenue and Vernon House  
Holborn, London

Drawing  
**PROPOSED  
GROUND FLOOR PLAN  
ENTRANCE DETAIL**

Scale	Drawn	Date	Checked
1:20@A1	HEG	11-06-18	SB
Project no.	Dwg	Revision	
15166	A(31)002	01	

**tatehindle**

**TateHindle Limited**  
1 Lindsey Street  
Smithfield  
London EC1A 9HP  
T 020 7332 4850  
mail@tatehindle.co.uk  
www.tatehindle.co.uk

