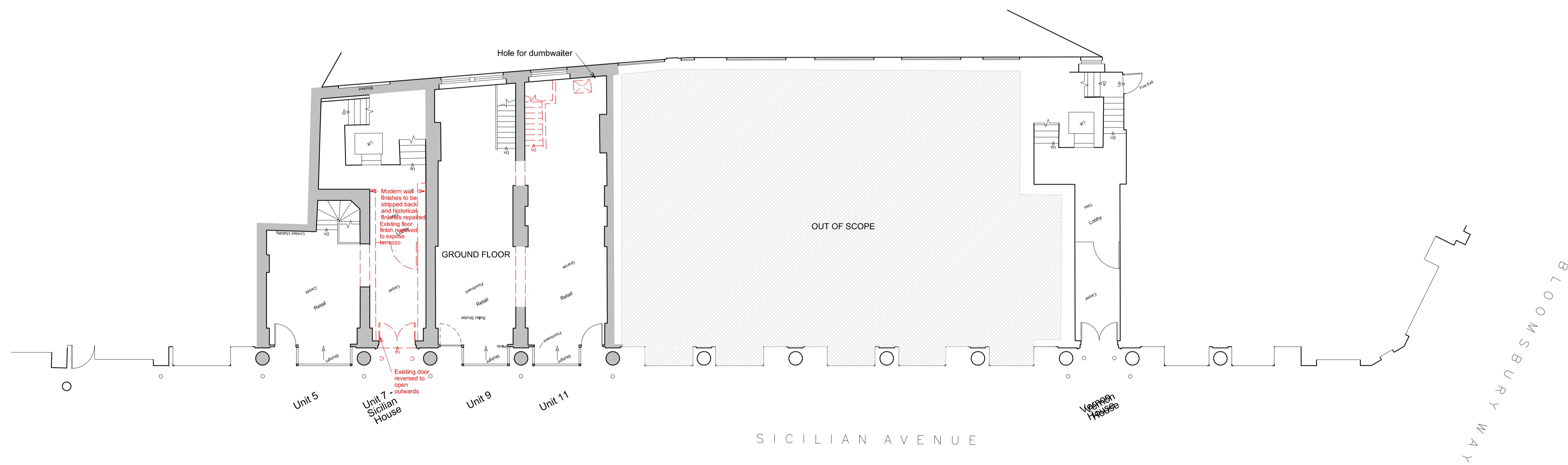


DO NOT SCALE THIS DRAWING

Contractors are to check all dimensions prior to commencement on site and notify the architect of any errors, omissions, or discrepancies.

TateHindle Limited retain copyright of this drawing. It may not be copied, altered or reproduced in any way without their written authority.



Rev	Description	Date	Drawn	Checked
04	Planning issue	15-08-18	HEG	SB
03	Stage 3 Draft Issue	10-08-18	HEG	SB
02	Issued for planning	31-07-18	HEG	SB
01	Member's entrance update	10-07-18	MB	SB
00	Stage 1 Issue	27-06-18	HEG	SB

Status
FOR INFORMATION

Client
LABs Holborn

Project
**LABs Sicilian Avenue and Vernon House
Holborn, London**

Drawing
**DEMOLITION
GROUND FLOOR PLAN**

Scale	Drawn	Date	Checked
1:100@A1	HEG	11-06-18	SB

Project no.	Dwg	Revision
15166	DEM(03)010	04

tatehindle

TateHindle Limited
1 Lindsey Street
Smithfield
London EC1A 9HP
T 020 7332 4850
mail@tatehindle.co.uk
www.tatehindle.co.uk

