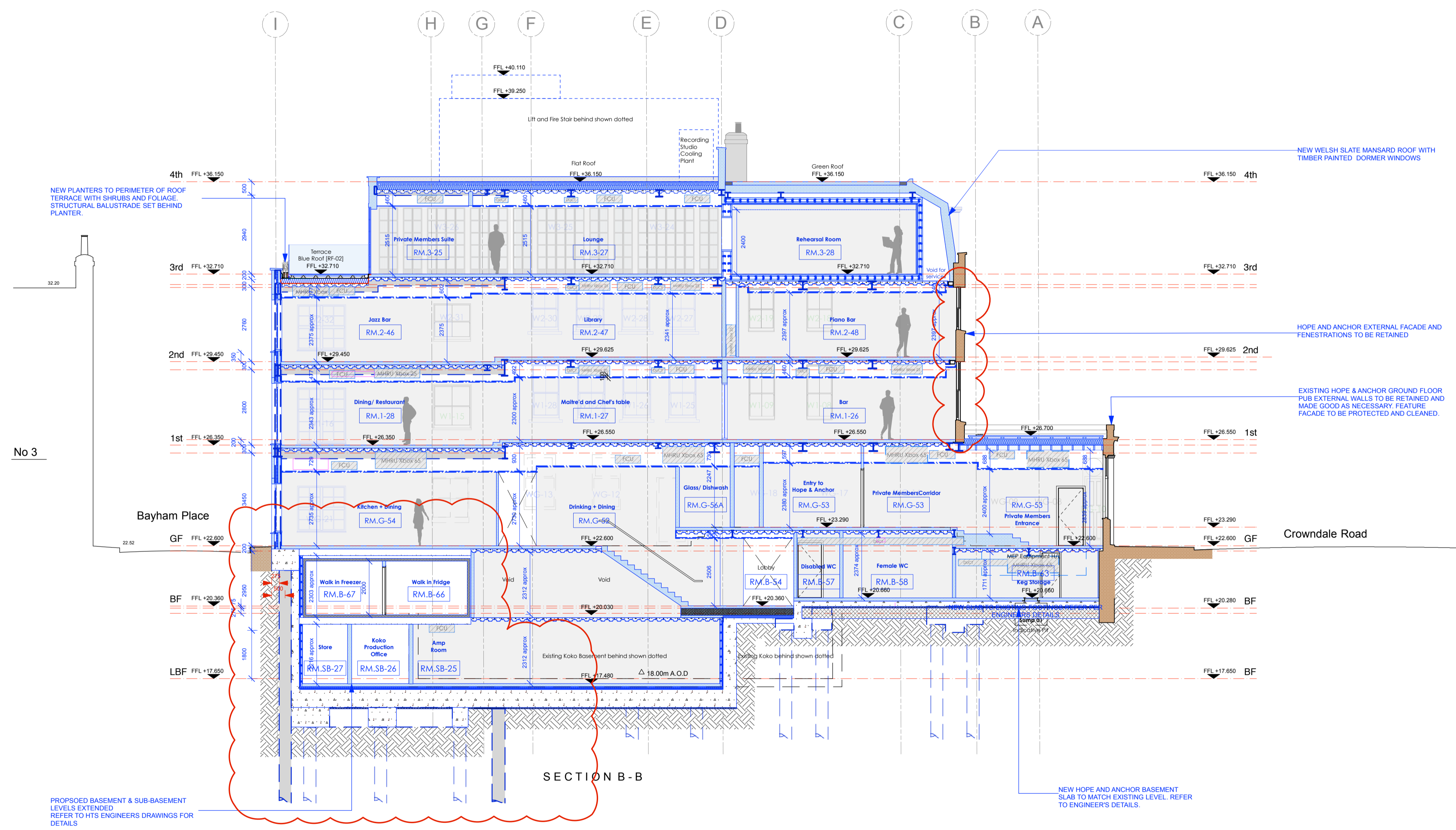
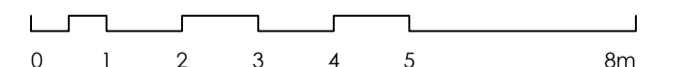


revision / date / amendments
A / 08/08/18 / Alterations to Basement & Sub-Basement Level layouts
B / 15/08/18 / Section Issued for Planning Application



15.08.18



Stage 4  
Archer Humphries Architects  
Basement  
Central House  
142 Central Street  
London, United Kingdom  
EC1V 8AR  
T: +44 (0) 20 7251 8555

project title		KOKO + Hope & Anchor + Bayham Place Camden, London	
drawing title	scale	date	checked
Section BB	1:100 (B.A.)	18.05.17	DA
drawing number	revision	drawn	checked
AHA/KCC/PR/301	B	FR	DA