

Copyright: All rights reserved. This drawing must not be reproduced without permission.

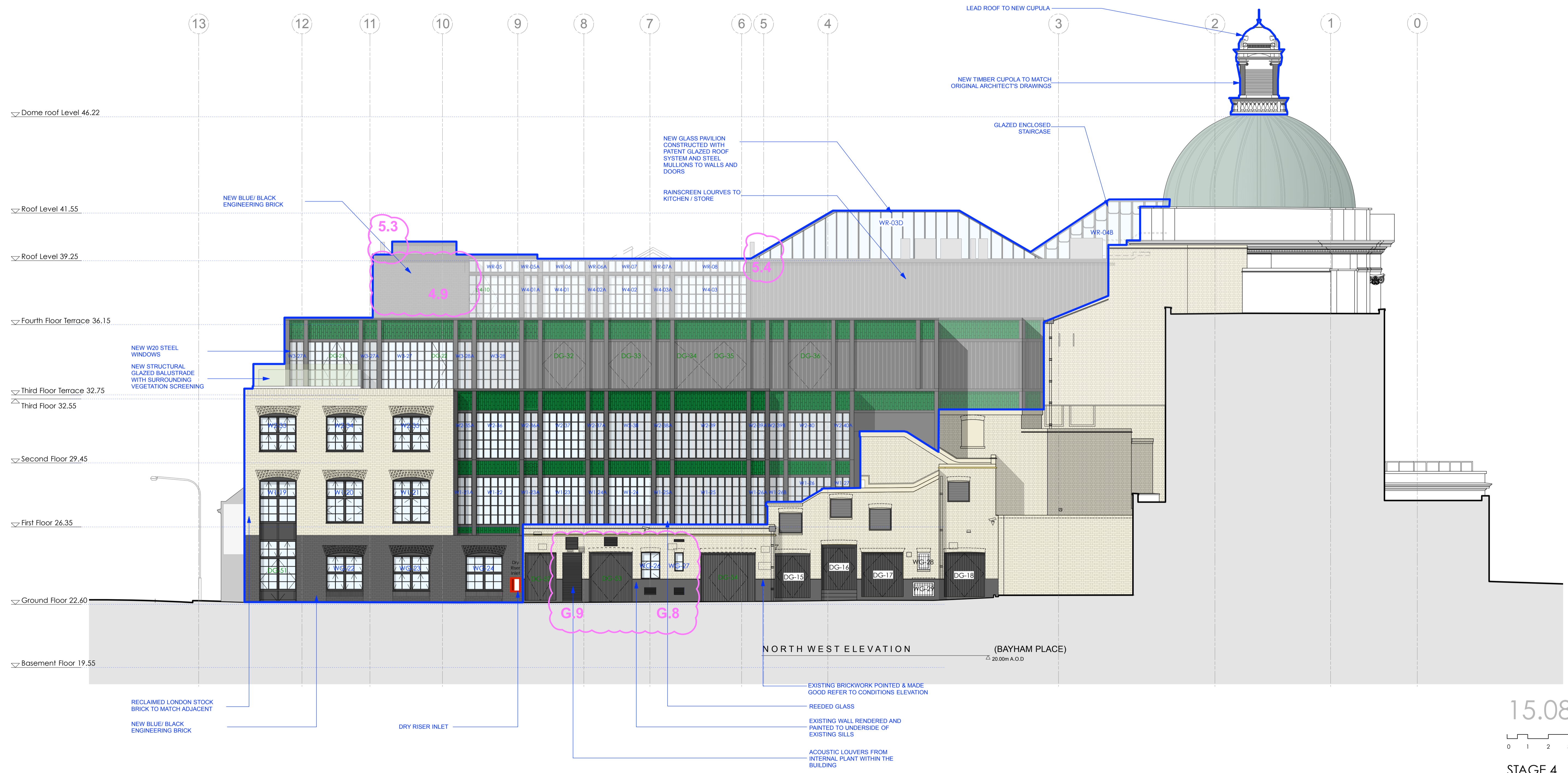
Only the original drawing should be relied upon. Contractors, subcontractors and suppliers must verify all dimensions on site before commencing any work or making any shop drawings.

All shop drawings to be submitted to the architect for comment prior to fabrication.

This drawing is to be read in conjunction with the Architect's specification, bills of quantities / schedules, structural, mechanical & electrical drawings and all discrepancies are to be reported to the architect.

Do not scale from this drawing. Dimensions are in millimetres unless otherwise stated.

revision / date / amendments	
- / 26/01/18 /	- First Issue
A / 02/03/18 /	- Window numbers added to match window schedule - GA notes updated
B / 02/05/18 /	- Window & Door numbers updated - G.8. & G.9. Louver Openings Added For Coordination with MEP Package
C / 13/08/18 /	4.9. Wall depth increased to include void for services 5.3. Existing chimney to rise above parapet 5.4. Chimney added from Pavillion Colour Coding added to Revised Drawing Rev C
D / 15/08/18 /	



15.08.18

0 1 2 3 4 5 6m

STAGE 4

Archer Humphries Architects

Basement  
Central House  
142 Central Street  
London, United Kingdom  
EC1V 8AR  
T: +44 (0) 20 7251 8555

project title		scale	date
KOKO + Hope & Anchor + Bayham Place Camden, London		1:100 (A1)	13.04.17
drawing title	drawn	checked	
Proposed Bayham Place Elevation	FR/PC	DA	
drawing number	revision		
AHA/KKC/GA/203	D		

Note: Please refer to the External Schedule of Conditions of Historic Fabric and AHA Drawings AHA-KKC-PR-350 to AHA-KKC-PR-361 series