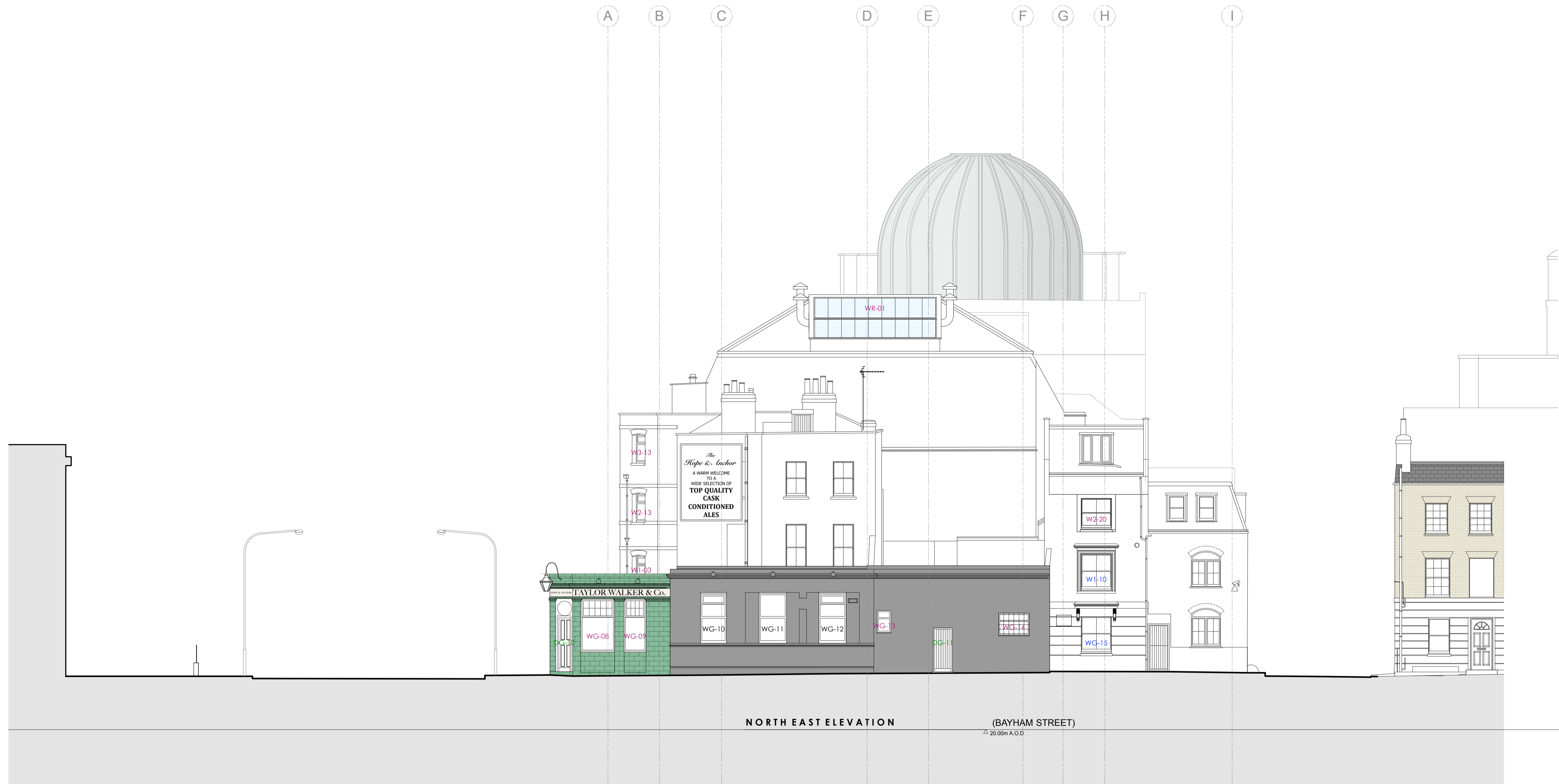
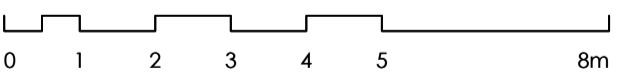


revision / date / amendments
- / - / - / -



05.12.17



STAGE 4

Archer Humphryes Architects

Basement  
 Central House  
 142 Central Street  
 London, United Kingdom  
 EC1V 8AR  
 T: +44 (0) 20 7251 8555

project title	
KOKO + Hope & Anchor + Bayham Place Camden, London	
drawing title	scale date
Existing Bayham Street Elevation	1:100 28.11.17
drawing number	drawn checked
AHA/KKC/GA/202	FR/PC DA
revision	revision
-	-