

Copyright: All rights reserved. This drawing must not be reproduced without permission.

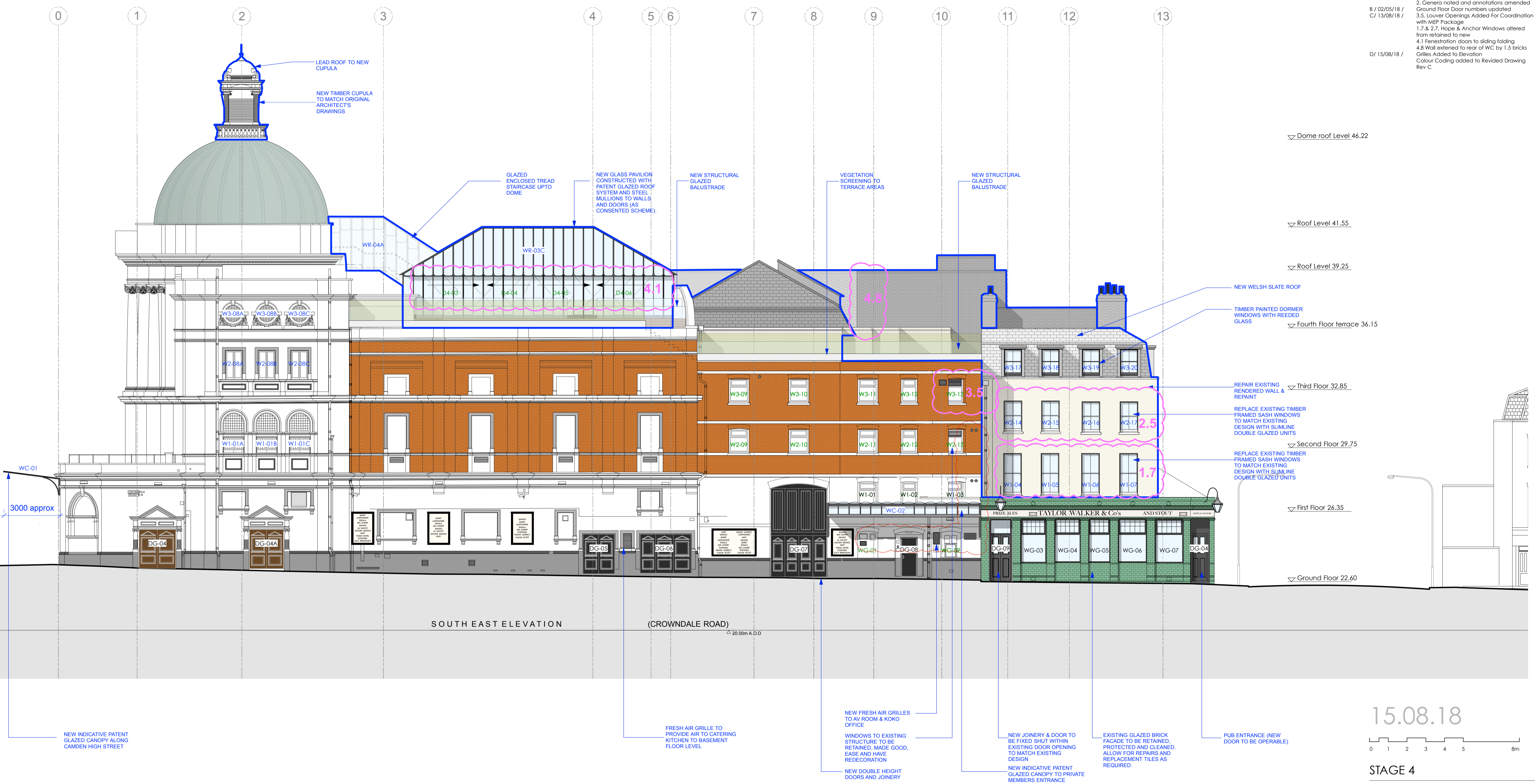
Only the original drawing should be relied upon. Contractors, subcontractors and suppliers must verify all dimensions on site before commencing any work or making any shop drawings.

All shop drawings to be submitted to the architect for comment prior to fabrication.

This drawing is to be read in conjunction with the Architect's specification, bills of quantities / schedules, structural, mechanical & electrical drawings and all discrepancies are to be reported to the architect.

Do not scale from this drawing. Dimensions are in millimetres unless otherwise stated.

revision / date / amendments	First Issue
- / 26/01/18 /	1. Window numbers updated
A / 02/03/18 /	2. General notes and annotations amended
B / 02/05/18 /	3.5. Louver Openings Added For Coordination with MEP Package
C / 13/08/18 /	1.7 & 2.7. Hope & Anchor Windows altered from retained to new
	4.1 Fenestration doors to sliding folding
	4.8 Wall extended to rear of WC by 1.5 bricks
D / 15/08/18 /	Grilles Added to Elevation
	Colour Coding added to Revised Drawing Rev C



Note: Please refer to the External Schedule of Conditions of Historic Fabric and AHA Drawings AHA-KKC-PR-350 to AHA-KKC-PR-361 series

15.08.18

0 1 2 3 4 5 8m

STAGE 4

Archer Humphries Architects

Basement
Central House
142 Central Street
London, United Kingdom
EC1V 8AR
T: +44 (0) 20 7251 8555

project title		KOKO + Hope & Anchor + Bayham Place Camden, London	
drawing title	scale	date	
Proposed Crowndale Road Elevation	1:100 @ A1	13.04.17	
drawing number	drawn	checked	
AHA/KKC/GA/201	EH/FR	DA	
	revision		
	D		