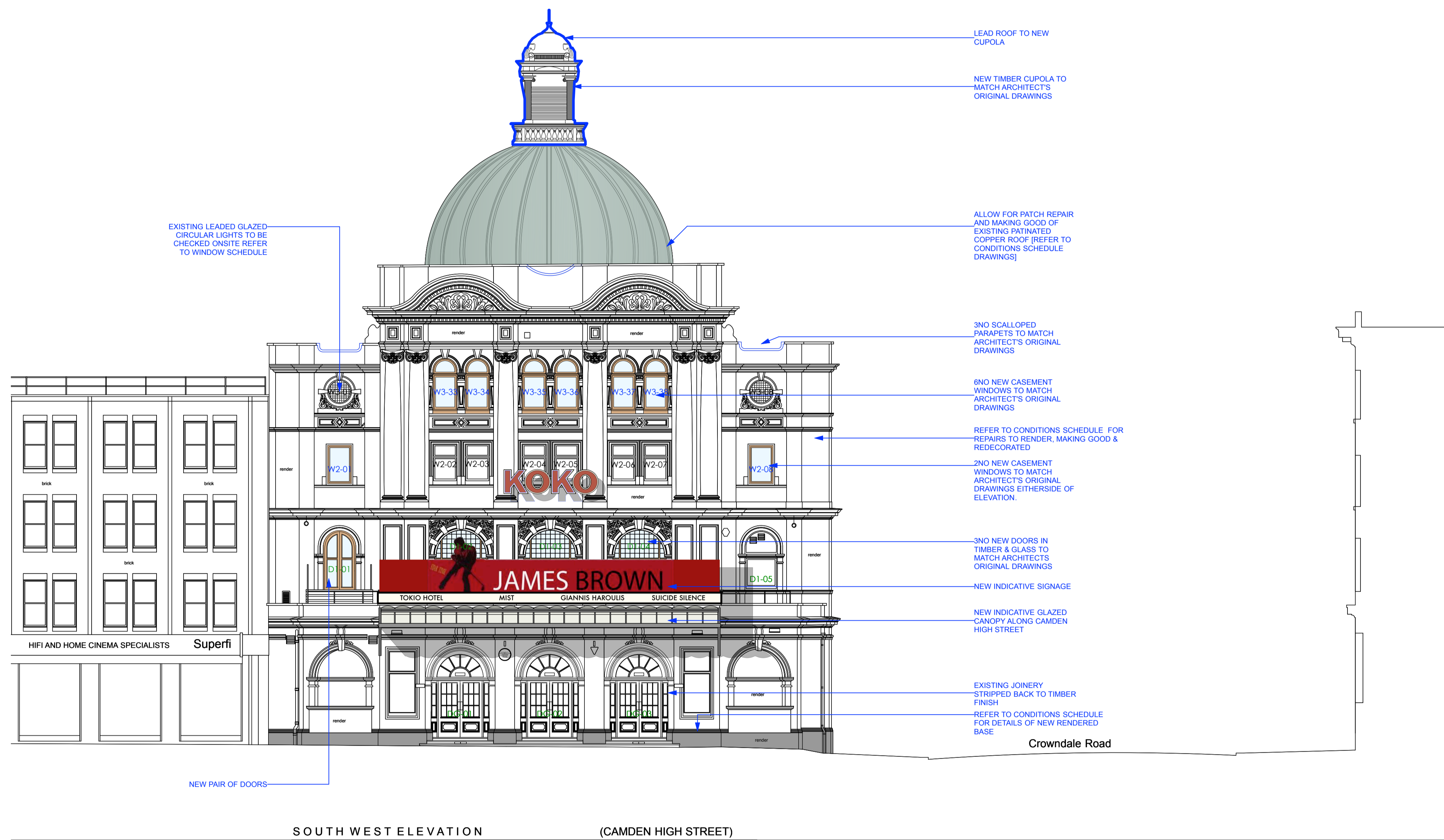


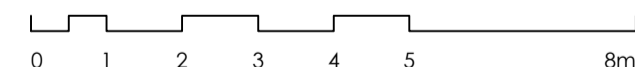
revision / date / amendments	
- / 26/01/18 /	- First Issue
A / 02/03/18 /	- General notes and annotations amended.
B / 02/05/18 /	- Window & Door numbers + general notes updated
C / 15/08/18 /	- Issued For Planning



SOUTH WEST ELEVATION (CAMDEN HIGH STREET)

△ 20.00m A.O.D.

15.08.18



STAGE 4

Archer Humphryes Architects

Basement
Central House
142 Central Street
London, United Kingdom
EC1V 8AR
T: +44 (0) 20 7251 8555

project title	
KOKO + Hope & Anchor + Bayham Place Camden, London	
drawing title	scale date
Proposed Koko Front Elevation	1:100 13.04.17
drawing number	drawn checked
AHA/KKC/ PR /200	FR/PC DA
	revision
	C