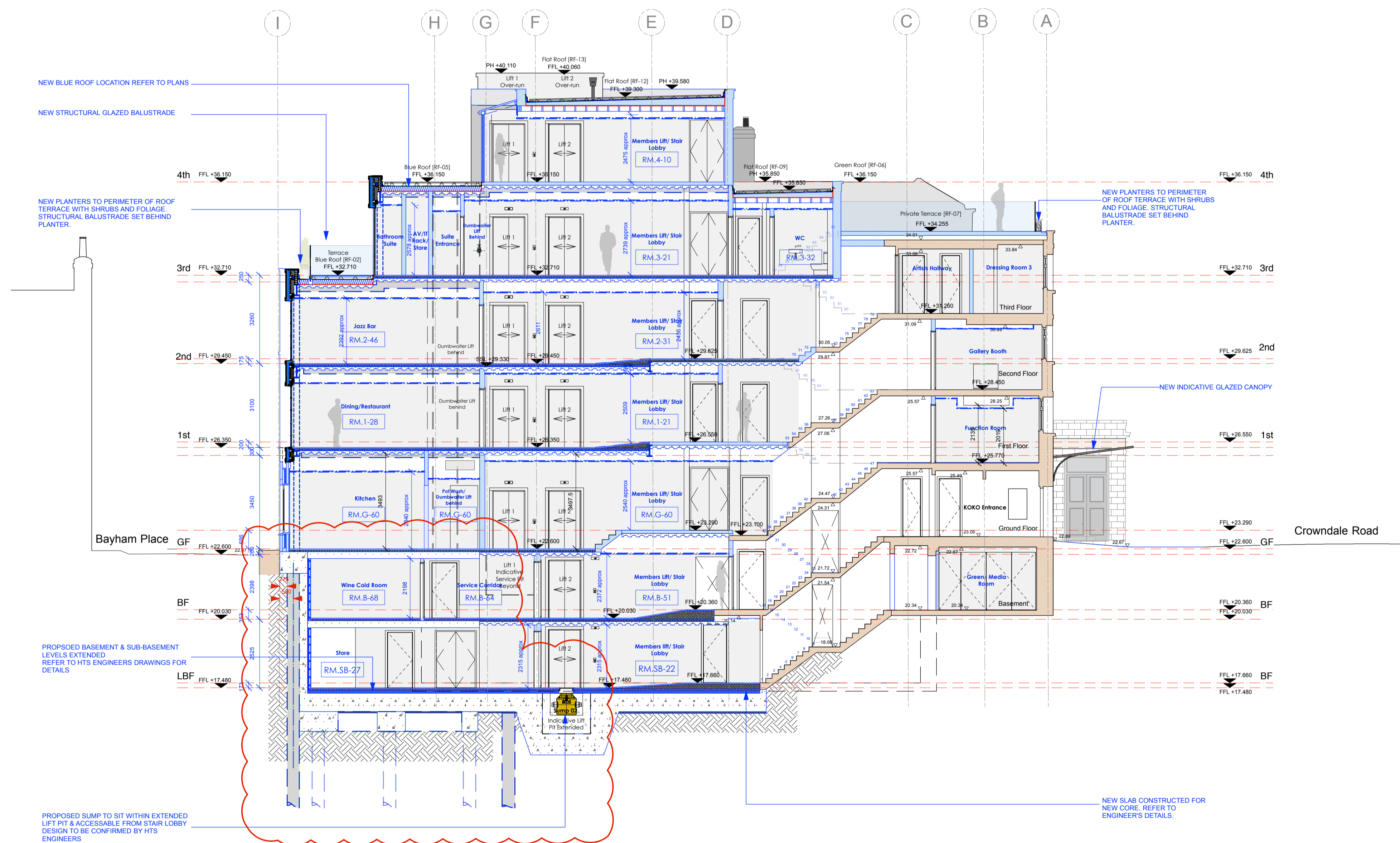
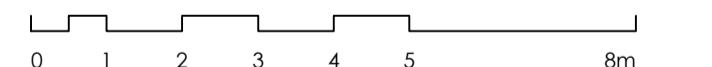


revision	date	amendments
A	08/08/18	Alterations to Basement & Sub-Basement Level layouts
B	15/08/18	Section Issued for Planning Application



15.08.18



STAGE 4

Archer Humphries Architects

Basement
Central House
142 Central Street
London, United Kingdom
EC1V 8AR
T: +44 (0) 20 7251 8555

project title KOKO + Hope & Anchor + Bayham Place Camden, London		
drawing title Proposed Section JJ	scale 1:100 @ A1	date 24.05.17
drawing number AHA/KKC/PR/309	drawn PC	checked DA
	revision B	