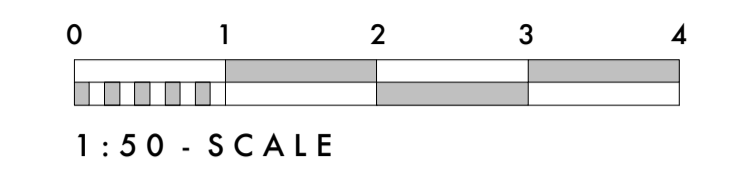
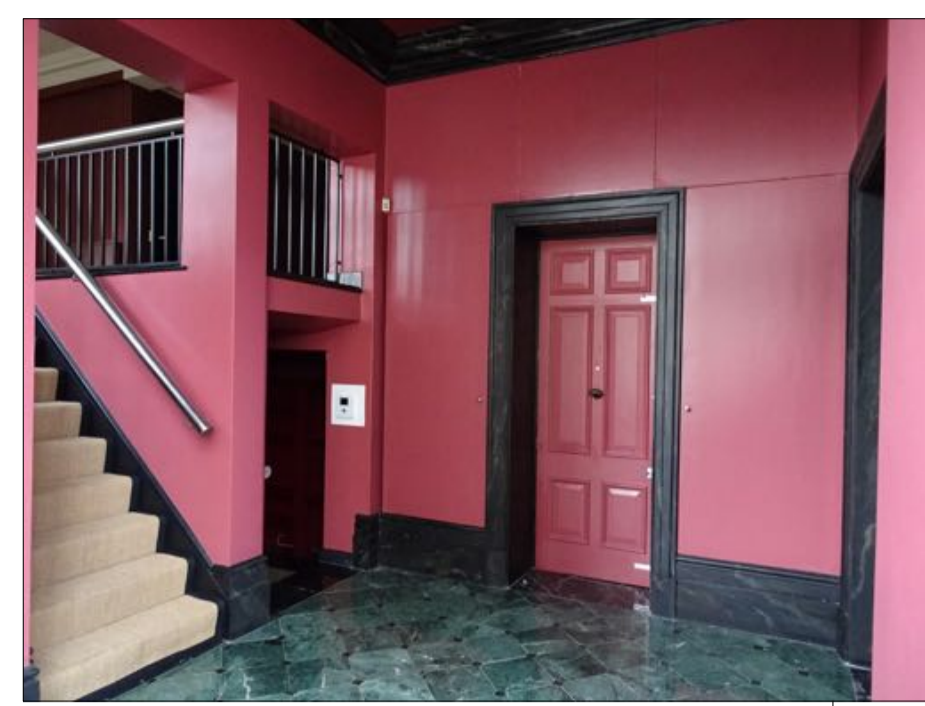


ALL DIMENSIONS AND LEVELS TO BE CHECKED ON SITE BY MAIN CONTRACTOR PRIOR TO COMMENCING EXCAVATION WORKS. ANY DISCREPANCY IS TO BE REPORTED BACK TO THE ARCHITECT FOR INSTRUCTION.

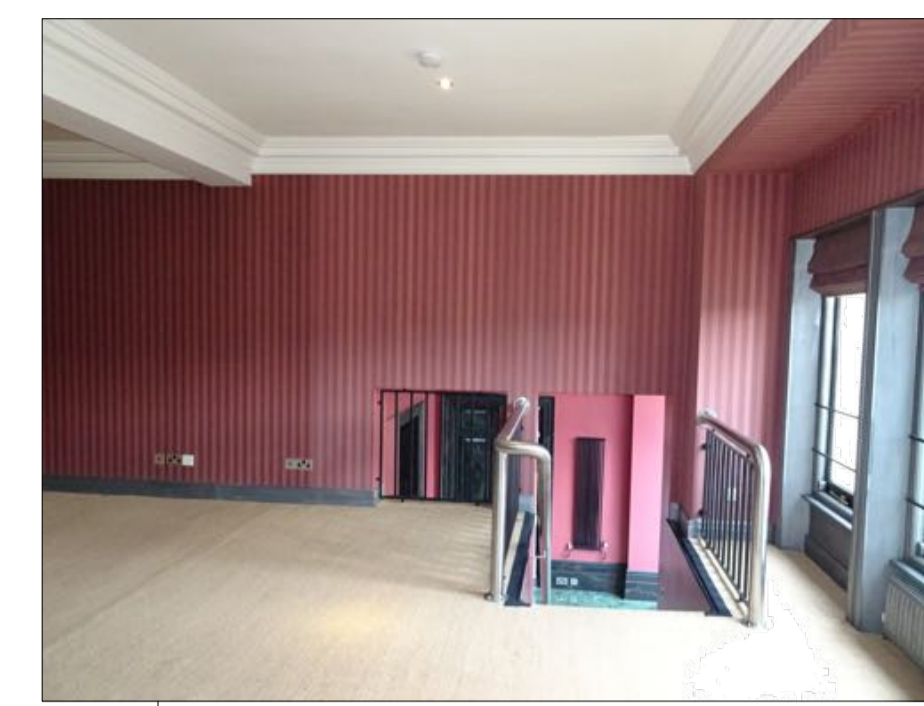
THIS DRAWING IS THE PROPERTY OF KERR PARKER ASSOCIATES LTD AND MAY NOT BE REPRODUCED OR DISCLOSED TO A THIRD PARTY IN ANY FORM WITHOUT WRITTEN PERMISSION.



cornice skirtings and architrave removed



walls removed and head raised in connection with reforming and raising height of stair flight opening



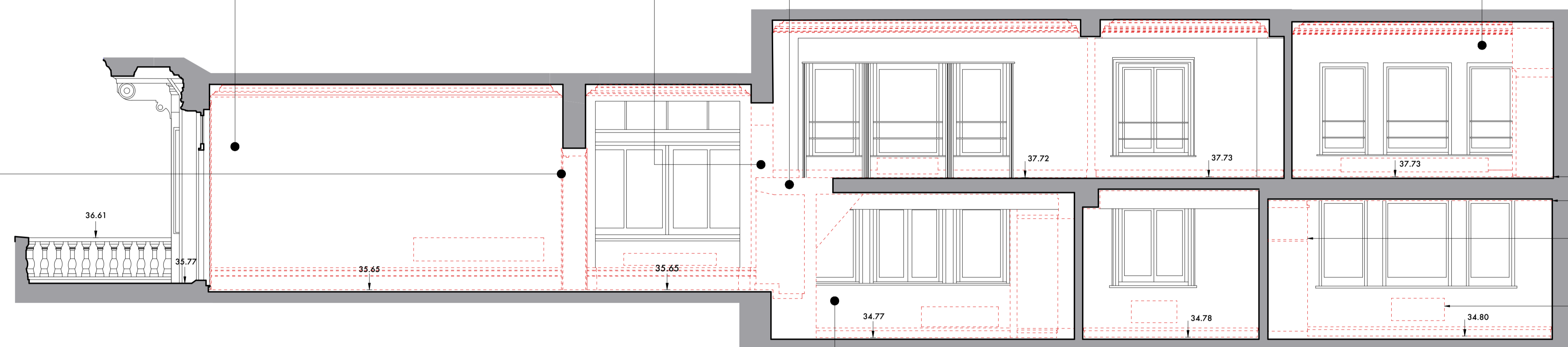
section of floor removed to form stairwell opening



closets and cornice removed



doors, skirtings, architrave and floor finishes removed.

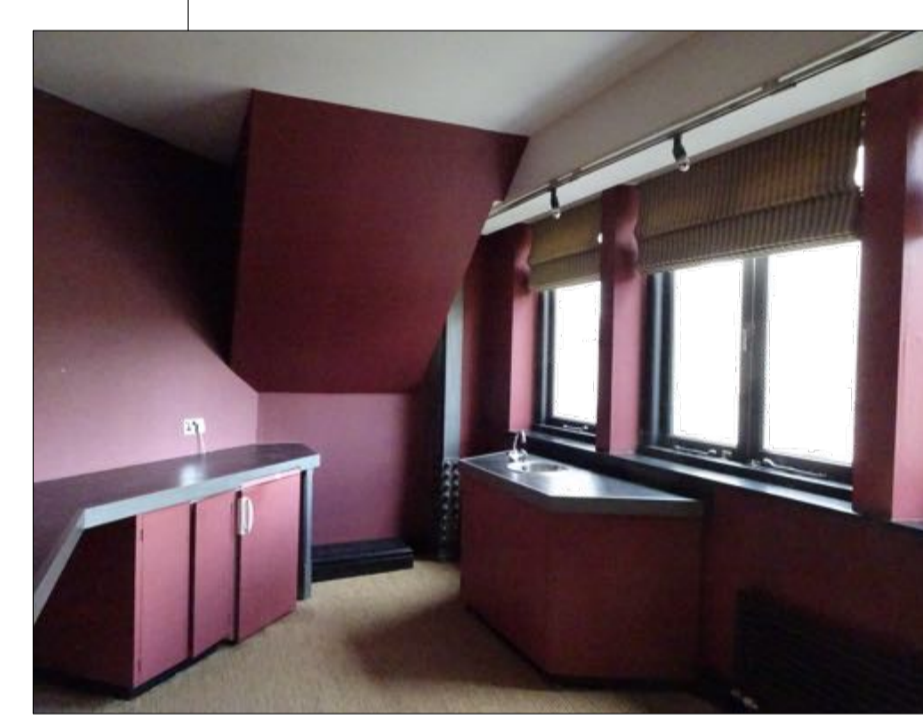


Demolition Section A-A

floor and ceiling finishes removed

existing joinery, skirtings and architraves to be removed

existing heating sources radiators and associated pipework etc shall be removed

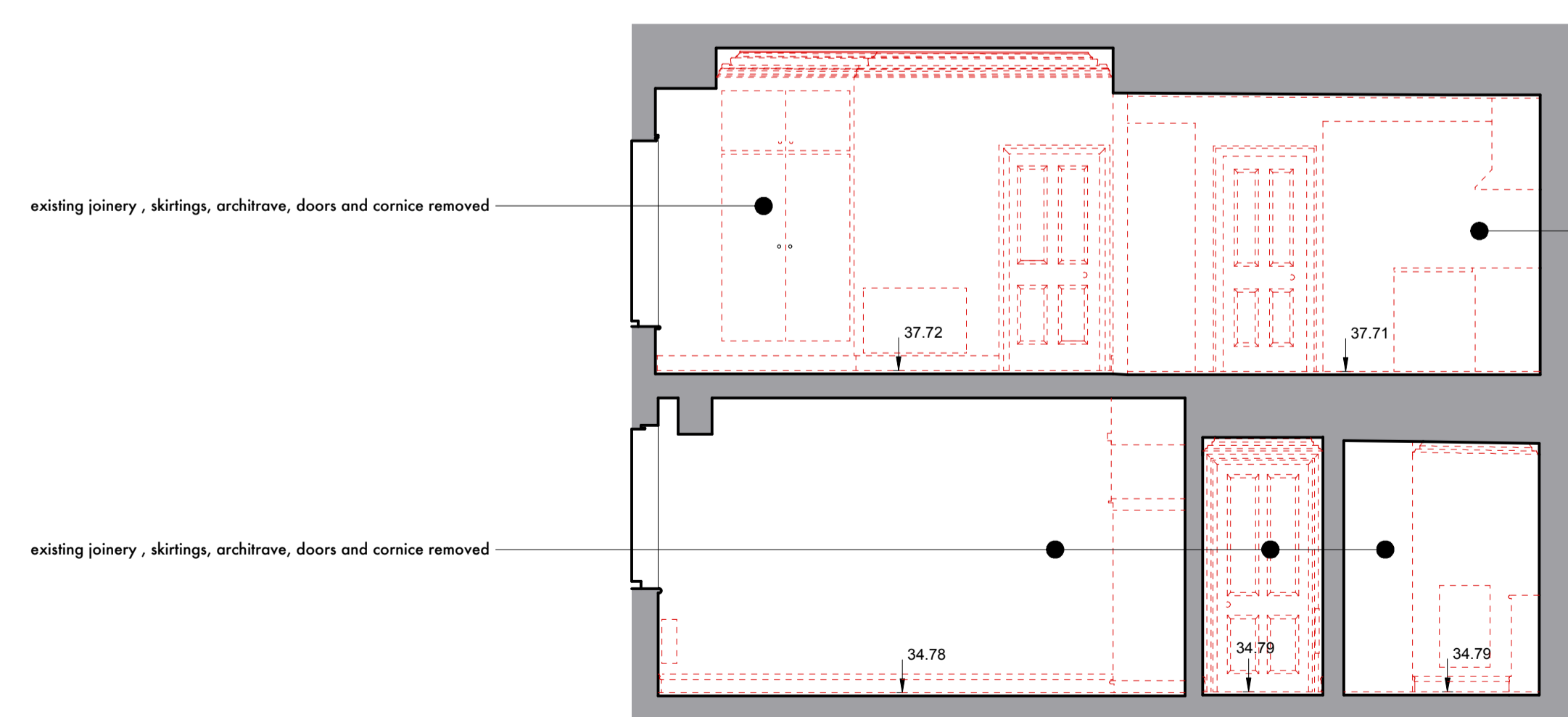


removal of stair, enclosing partition walls, fixtures, fittings and skirtings

LEGEND

- - - - - walls, doors, fabric, fixtures and fittings to be removed

— — — — — retained building structure and fabric



Demolition Section B-B

existing joinery, skirtings, architrave, doors and cornice removed

existing joinery, skirtings, architrave, doors and cornice removed



kitchen fixtures and fittings removed

PLANNING ISSUE

**KERR PARKER ASSOCIATES LTD**

THE GRANARY, COPPID HALL, NORTH STIFFORD, ESSEX RM16 5UE  
TEL: 01375-377731

CONTRACT  
APARTMENT 2-3 - 10 CAMBRIDGE GATE,  
LONDON, NW1 4JX

DRAWING  
DEMOLITION SECTIONS A-A & B-B

SCALE	1:50	DATE	June 2018
DRAWN	SB	CHECKED	Rp

DRAWING NO. **K-1712 . 09**

Contractors must verify all dimensions and information on site prior to commencement of work. Do not scale from drawing. Copyright ©