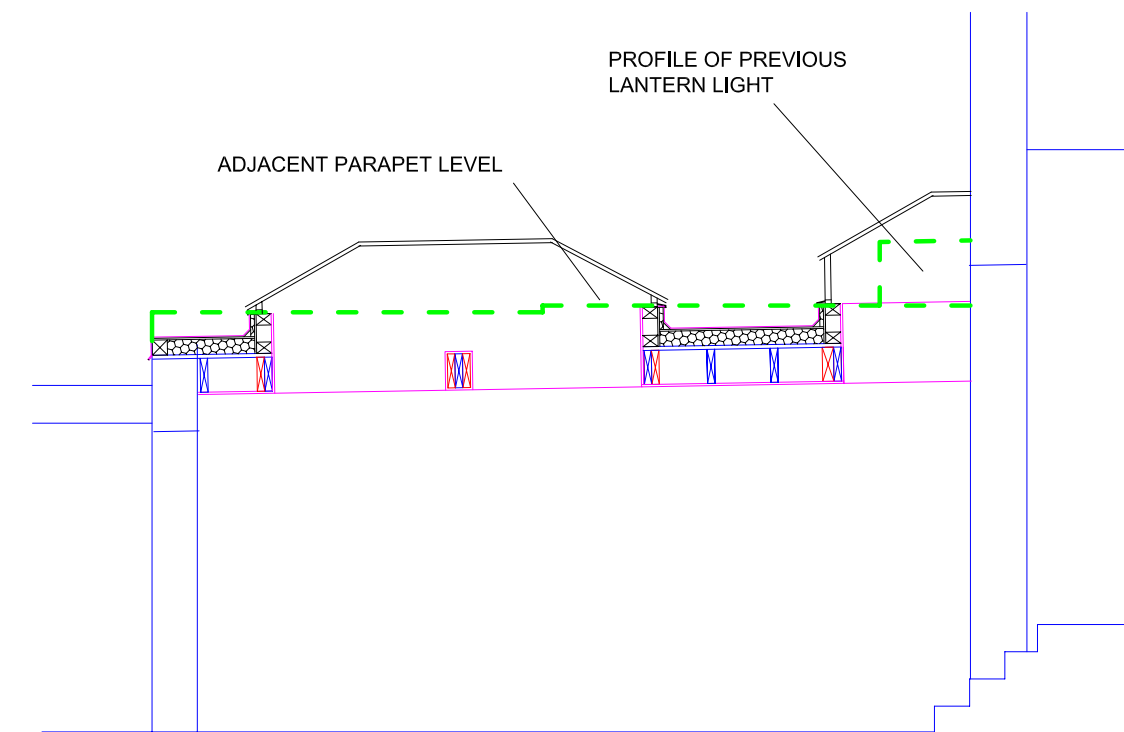
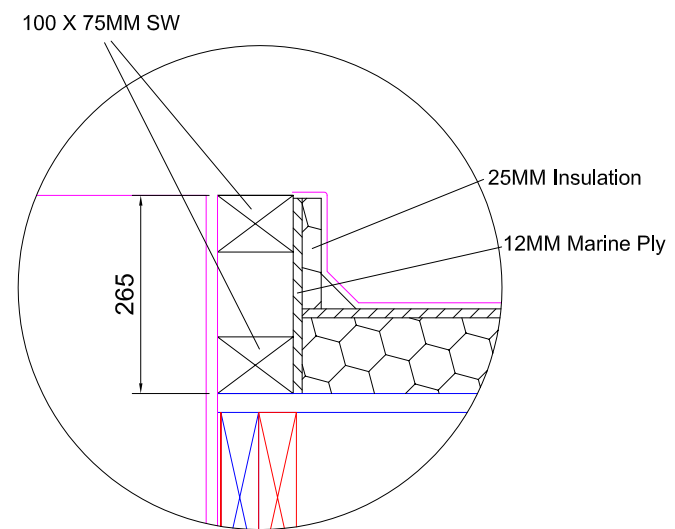


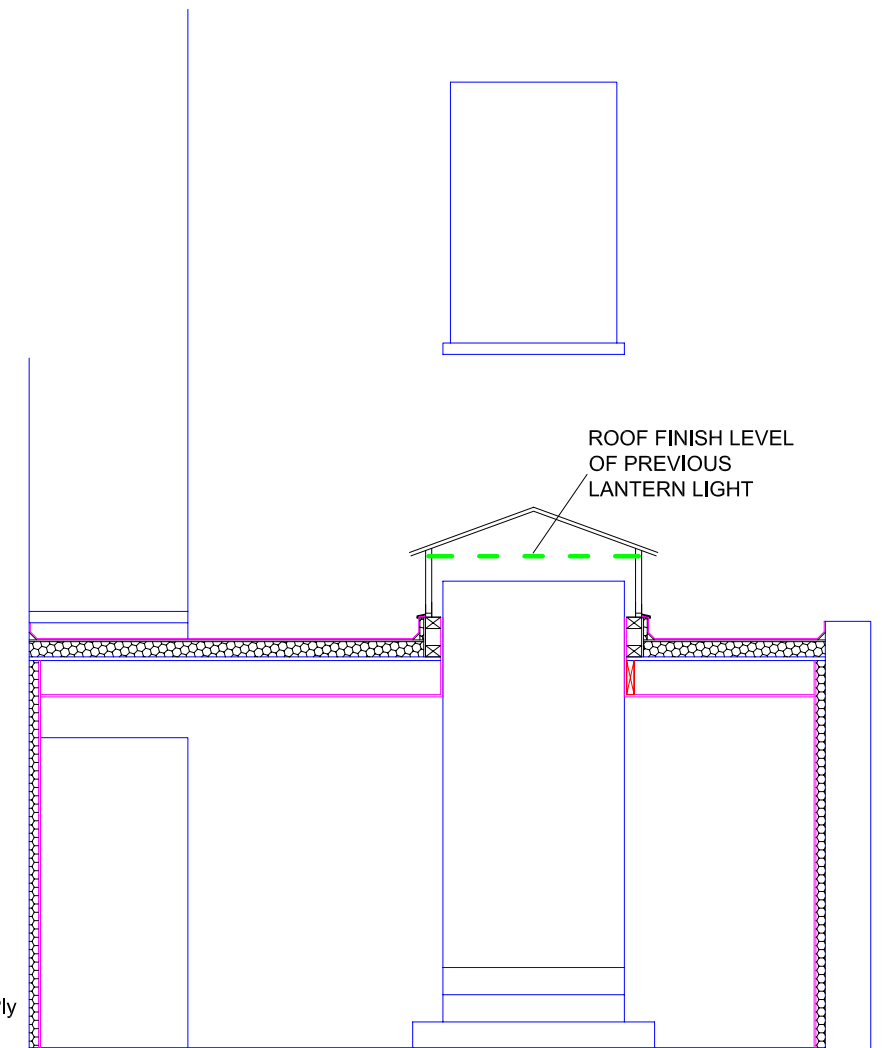
Grey glass fibre roof finish on 12mm WBP ply fixed through 100MM Kingspan
Thermarof insulation on exist. felt finish to exist. timber decking. Plain glass rooflights, double glazed, inner pane laminated. Rooflight lengths determined by exist. joist positions.



SECTION CC



KERB DETAIL



SECTION DD

REVISIONS

- A 07-01-18 Kerb Detail modified
- B 16-06-18 Previous lantern light and exist kerb upstand shown

NOTES

A G Lisle MSc			
Chase House, Donhead St Andrew, Shaftesbury, SP7 9EB 07968 221174			
FLAT I, 8 BARTHOLEMEW VILLAS NW5 2LL			
KITCHEN ROOF			
DETAILS			SCALE: 1:50 @ A3
DR. NO.: 8NW5-14	REV	B	DATE: DEC 2017