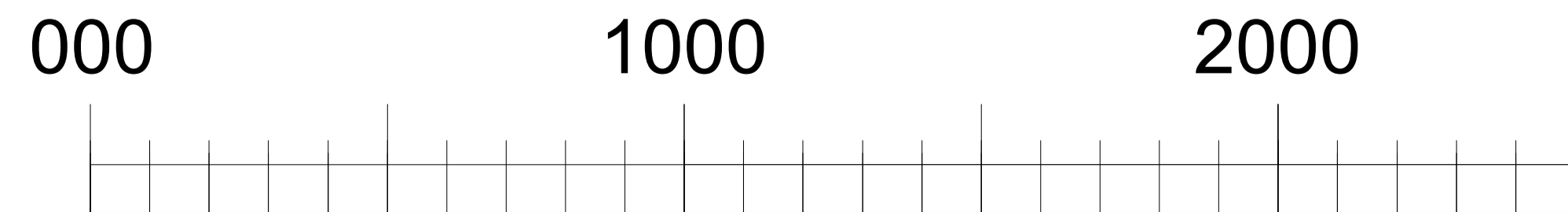
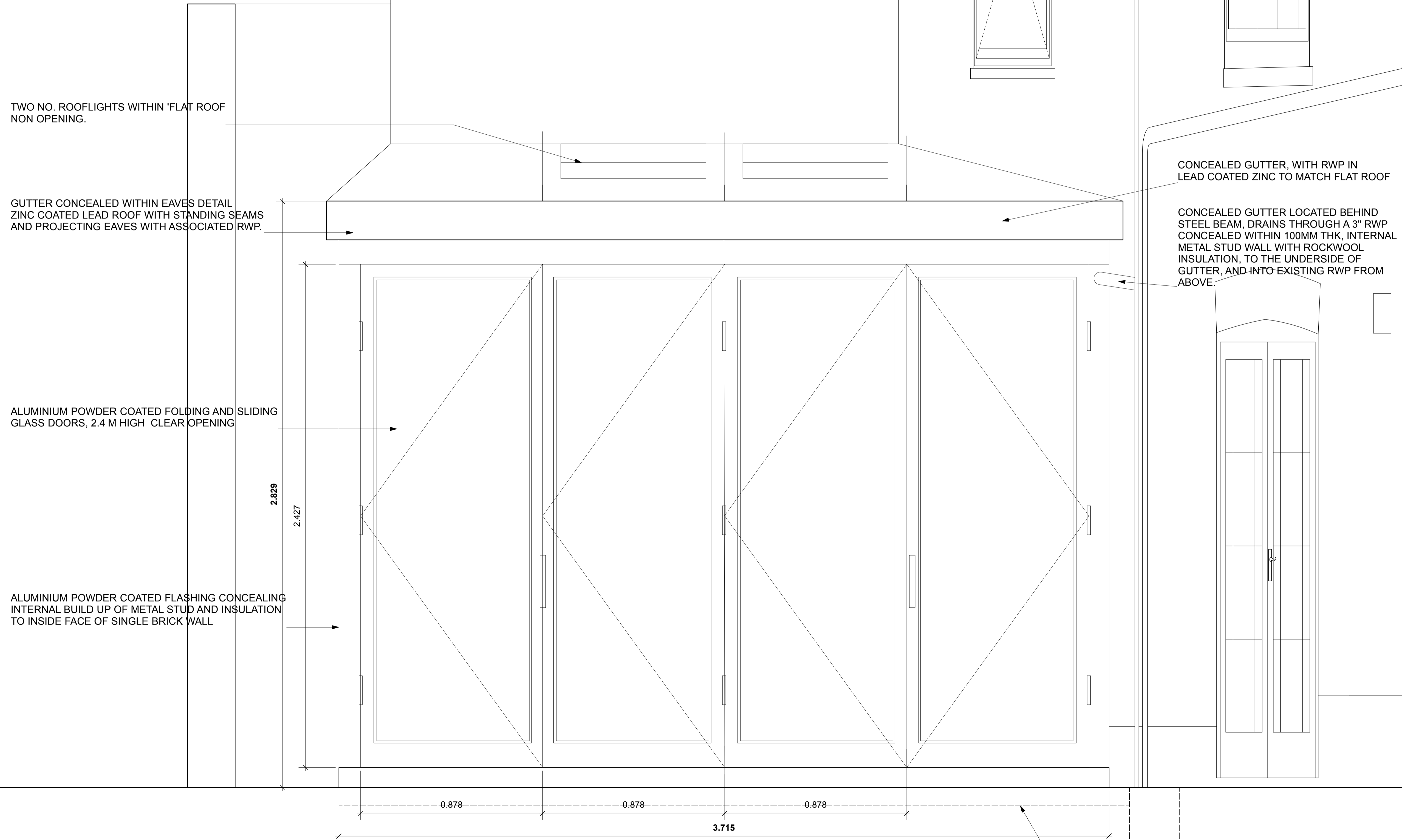


# PLANNING ADD. INFORMATION REQUESTED

## ELEVATION OF PROPOSED CLOSET WING INC. PART REAR ELEVATION



Scale Bar. Scales 1:10 when printed at A1 paper size

**20GC PR 10**

# PLANNING ADD. INFORMATION REQUESTED

## TYPICAL SECTION OF PROPOSED CLOSET WING INC. PART REAR ELEVATION

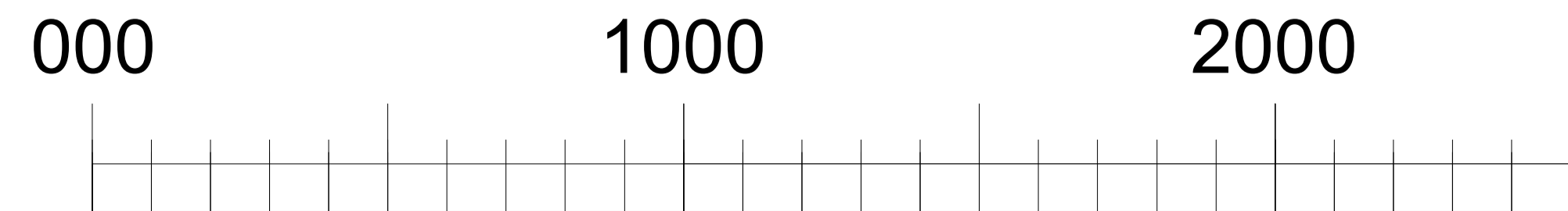
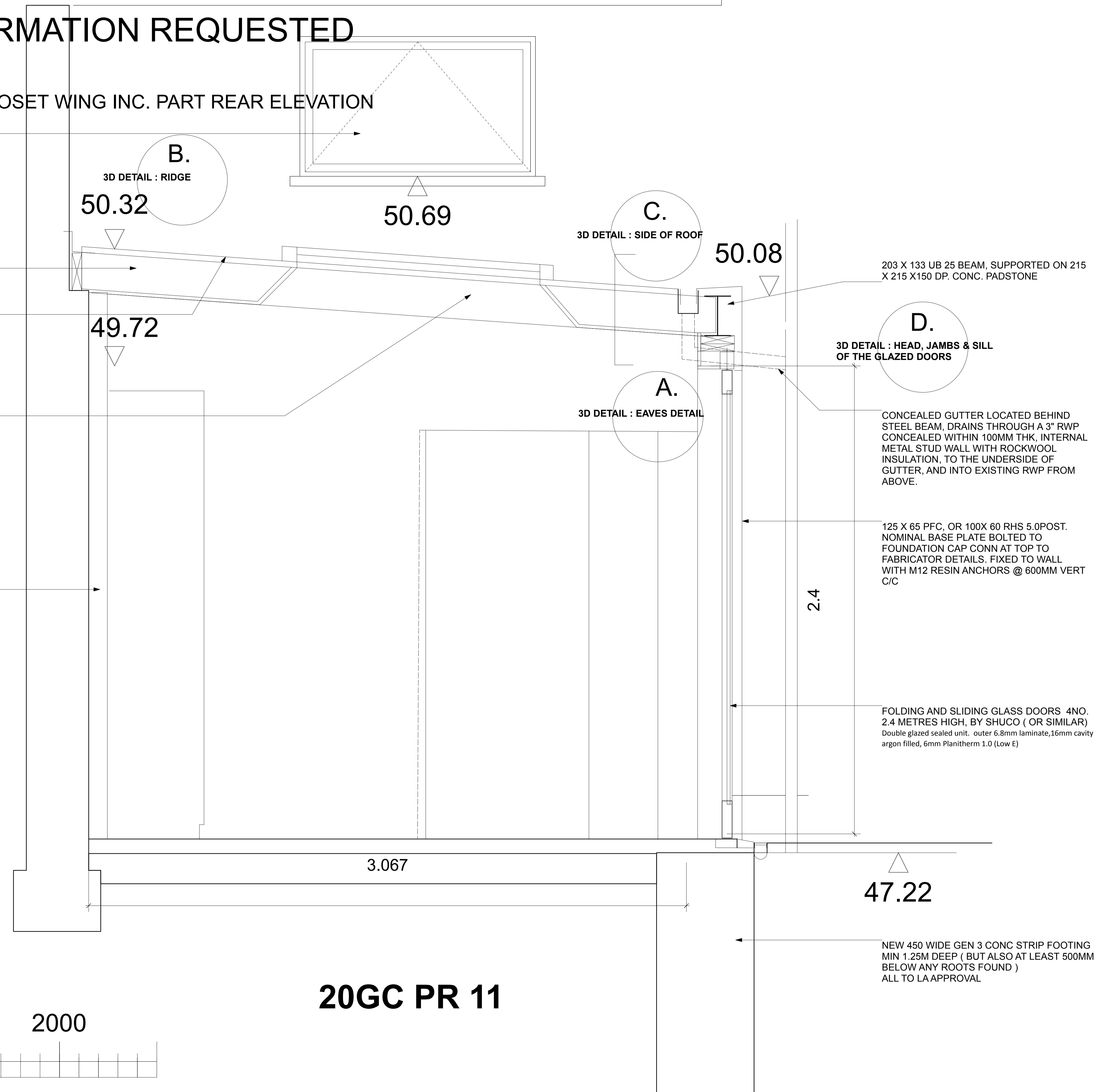
Replacement window to Guest WC at hall Floor Level, and Flat roof over. (Note. Confirmed Levels) REFER TO DETAILED DRAWING

200 X 50 C24 WALL PLATE BOLTED TO EXISTING WALLS USING M12 RESIN ANCHORS @ 275MM C/C

New raised roof, with standing seam zinc covering and rooflights. 600mm above existing. (levels confirmed)

NOTE. Existing Waste water pipe from existing WHB re-routed internally to WC stub stack.

Existing 1 1/2 thick brick party wall, all remains as existing, WITH INTERNAL LINING IN METAL STUD WITH ROCKWOOL INSULATION, TO PROVIDE ROUTE FOR SERVICES AND WASTE FROM ABOVE.



Scale Bar. Scales 1:10 when printed at A1 paper size

**20GC PR 11**

NEW 450 WIDE GEN 3 CONC STRIP FOOTING MIN 1.25M DEEP ( BUT ALSO AT LEAST 500MM BELOW ANY ROOTS FOUND ) ALL TO LA APPROVAL