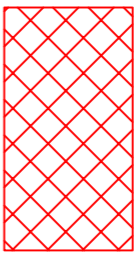
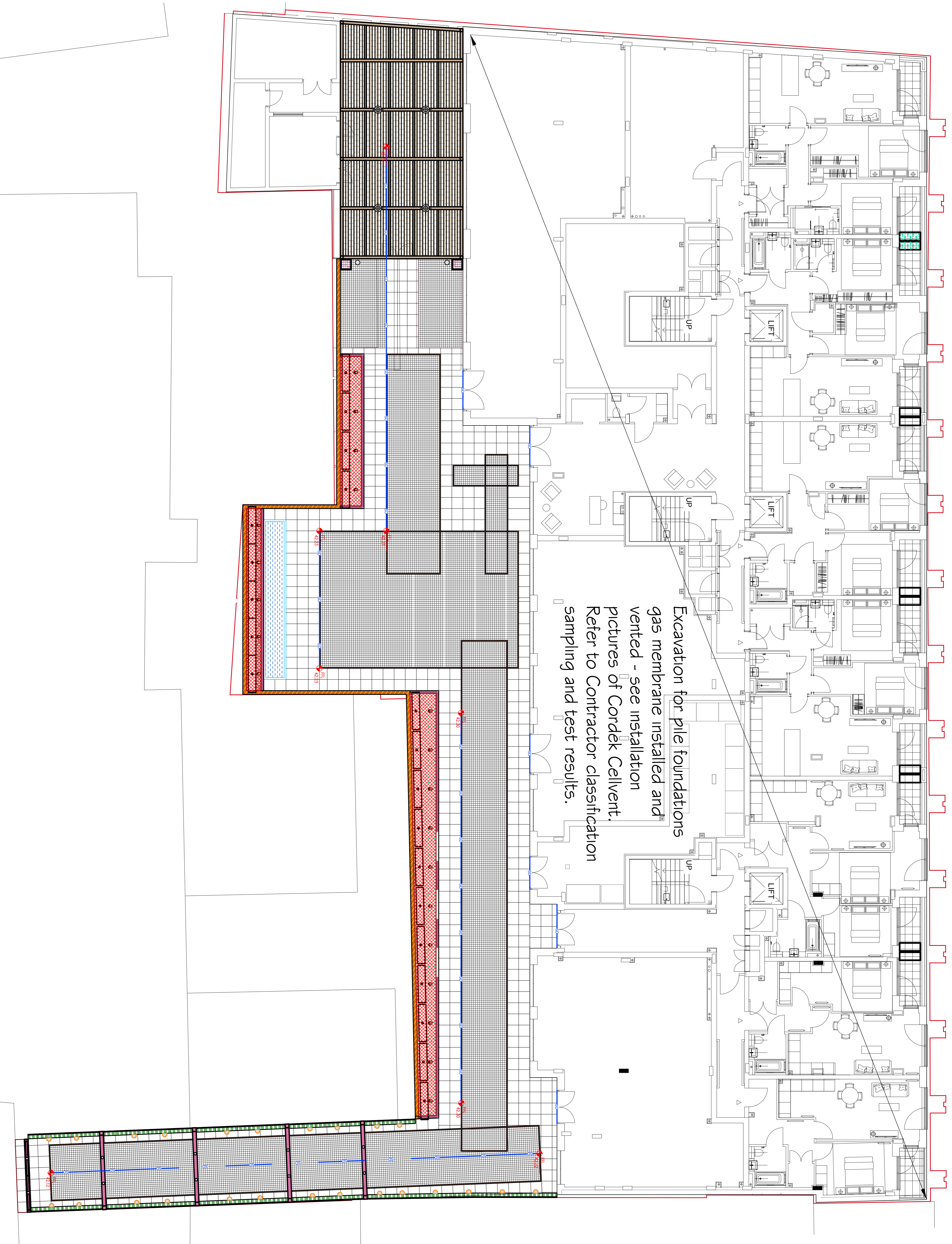


NOTES

- Site excavation to formation.
- Material stockpiled and sampled - see Tourneen Contractors 3MAY2017
- Cordtek Cellvent installed - 250mm concrete slab over.
- Hard landscaping over geotextile terram.
- Soft landscaping 600mm Clean topsoil over compacted soil.

**Key**  
 Soft landscaping min 600mm Clean topsoil over compacted soil refer to Randle Stoddley details

Excavation for pile foundations gas membrane installed and vented - see installation pictures of Cordtek Cellvent. Refer to Contractor classification sampling and test results.



Rev	Date	Information Issue
A	09-03-2018	Information Issue

**RWA London**  
 Civil & Structural Engineers

Telephone : (020) 7583 0088  
 e-mail : engineers@rwalondon.co.uk

**Information Issue**

254 Kilburn High Road

Remediation Key Plan