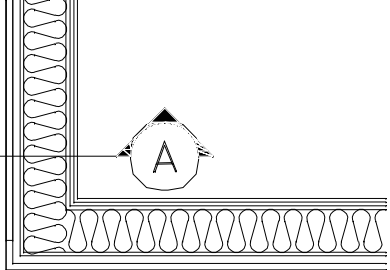
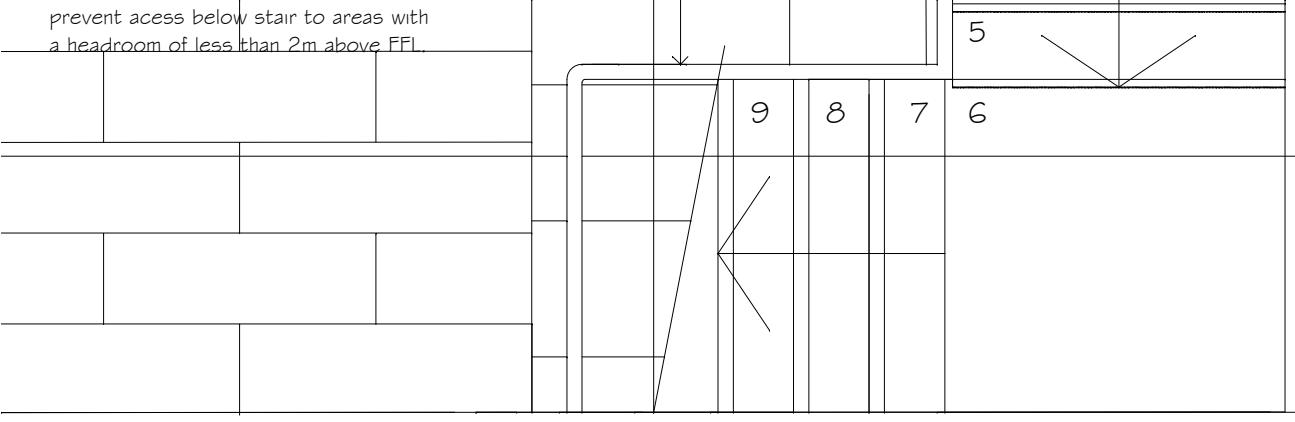


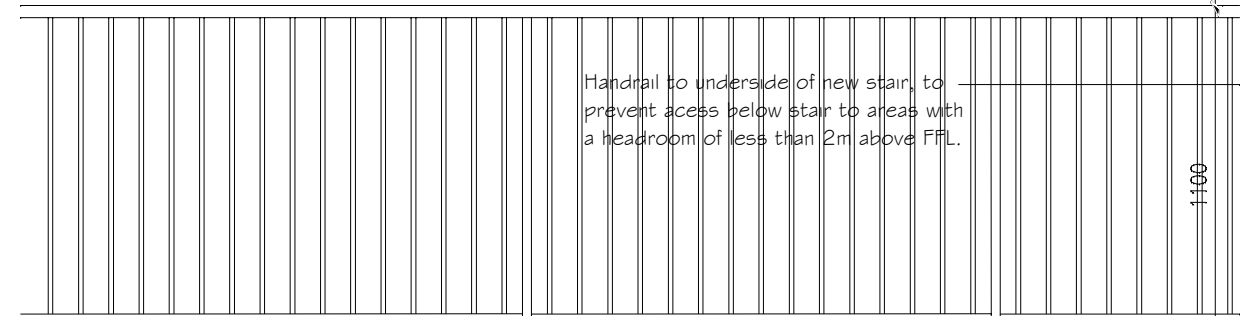
prevent access below stair to areas with a headroom of less than 2m above FFL.



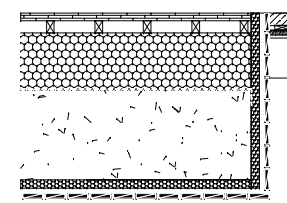
200x90x30mm stainless ssteel PFC stair stringer. To S/E details and specification .

Clear acrylic perspex safety sheet infill to risers secured to steel angle framing.

max 100 c/c



Handrail to underside of new stair, to prevent access below stair to areas with a headroom of less than 2m above FFL.

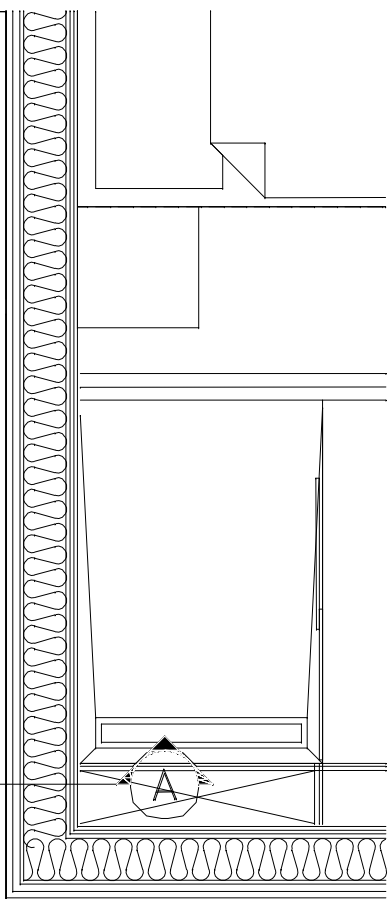
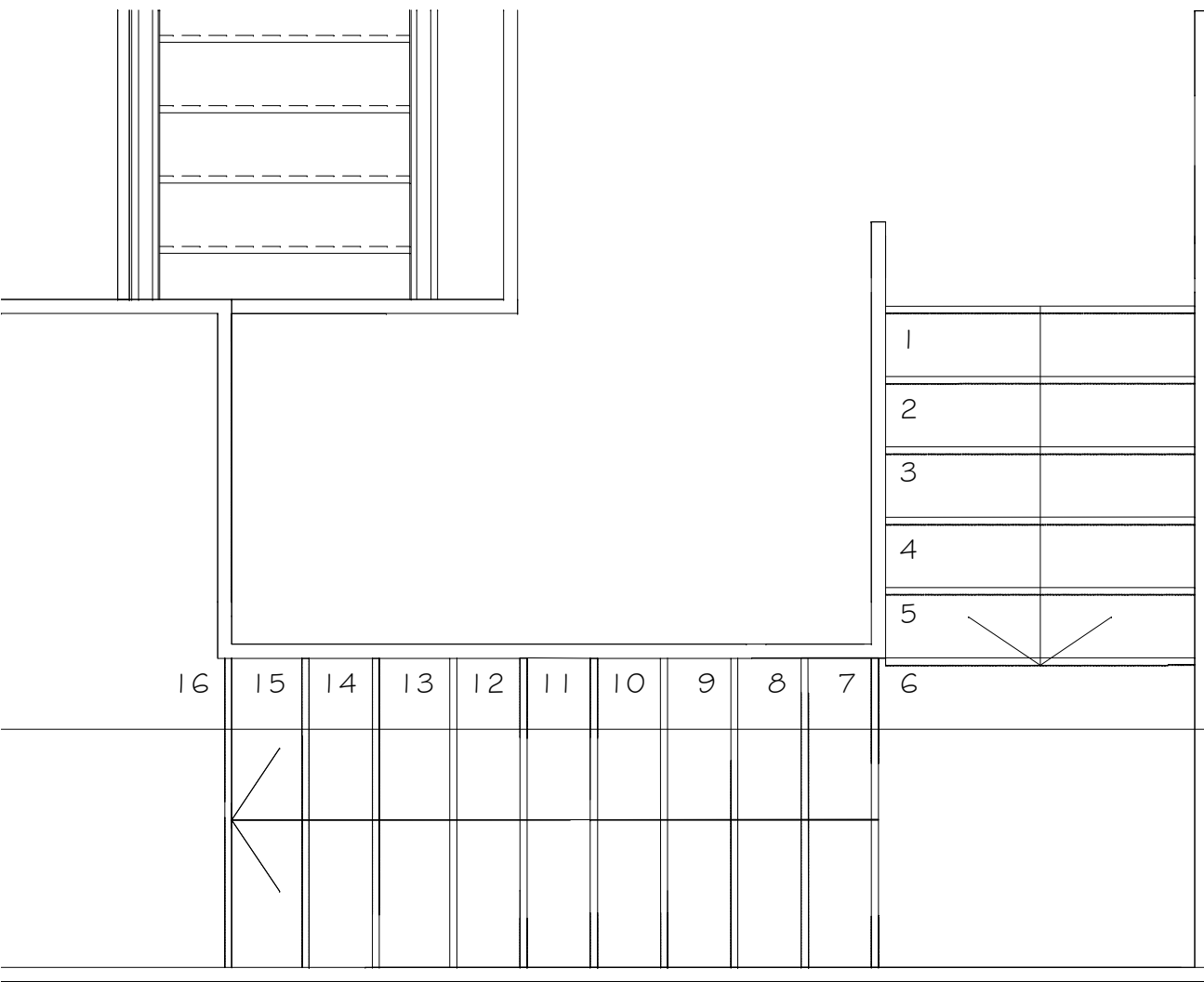


Marshall's or similar approved paving tiles on pavement pads.

210mm Protherm G Radmat rigid thermal insulation with Radmat FS 10 thermal sheath. U value 0.15. Laid on EPDM.

Brick slip on rail.

Concrete slab to S/E details and specifications.



A SECTION 1:25@A1

