

REVISION	DATE	BY	DESCRIPTION
A	25.05.18	ED	REVISION ACCORDING TO LANDLORD COMMENTS (FLOOR FINISHES)
B	25.05.18	ED	REAR STAIRS
C	05.06.18	TB	RAMP 1 AMENDED

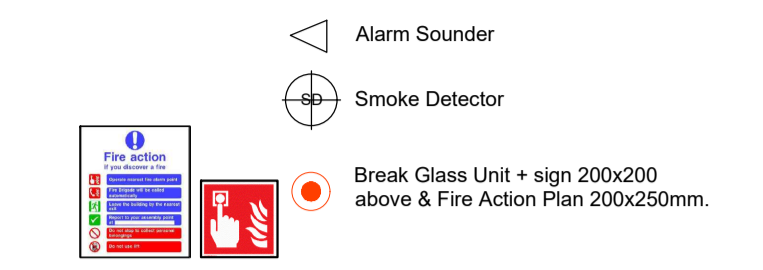
REFERENCE FILES

NOTES

LEGEND

NOTE: DRAWINGS ARE BASED ON EXISTING DRAWINGS SUPPLIED BY THE CLIENT AND HAVE NOT BEEN BASED ON A SPECIFIC MEASURED SURVEY. ALL DIMENSIONS AND AREAS ARE APPROXIMATE AND SHOULD BE CHECKED ON SITE. THESE DRAWINGS HAVE BEEN PREPARED FOR DESIGN FEASIBILITY ONLY AND ARE NOT TO BE USED FOR CONSTRUCTION PURPOSES.

Install and connect Fire alarm system including smoke detection, sounders and breakglass units. Install fire extinguishers to fire consultant specifications.



Provide latex leveling screed to existing RC slab

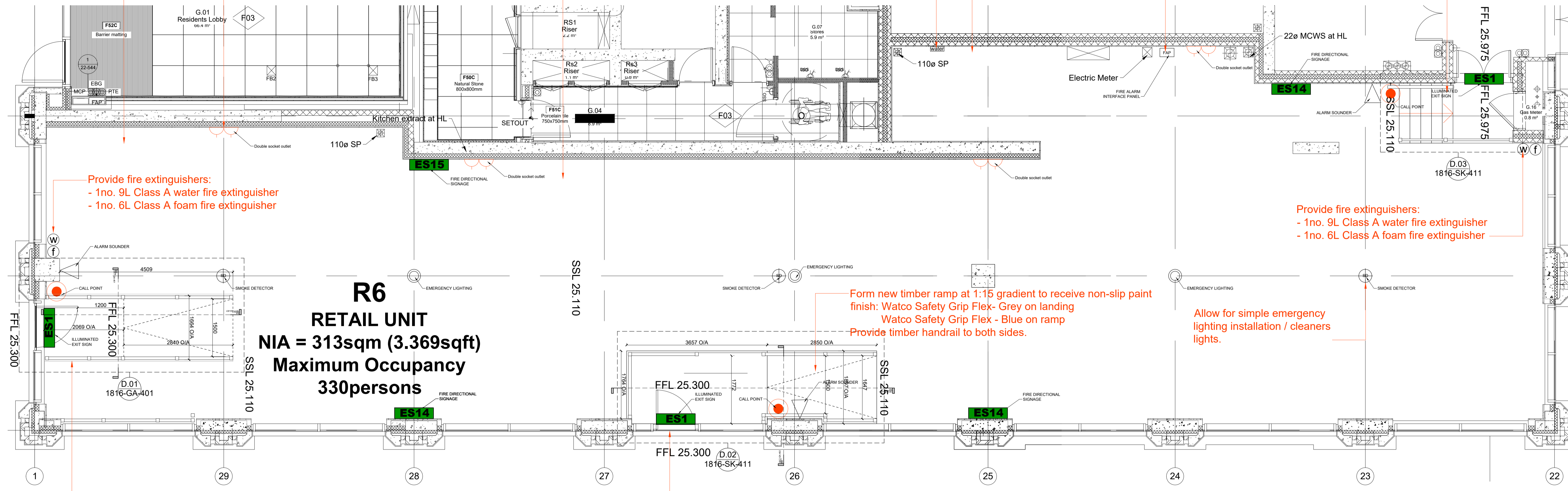
Allow for 4no. double socket outlets mounted on rear walls with surface-mounted metal conduit.

Install and connect Intruder Alarm to specialist consultant specifications

Install potted water supply and tap.

Provide 1 No. Commando socket for power connections.

Form new timber steps to receive non-slip paint finish : Watco Safety Grip Flex- Grey with Contrasting nosing to steps: allow for 1no 50mm wide strip of Watco Safety Grip Flex - Blue on nosing. Provide Timber handrails.



Provide fire extinguishers:  
- 1no. 9L Class A water fire extinguisher  
- 1no. 6L Class A foam fire extinguisher

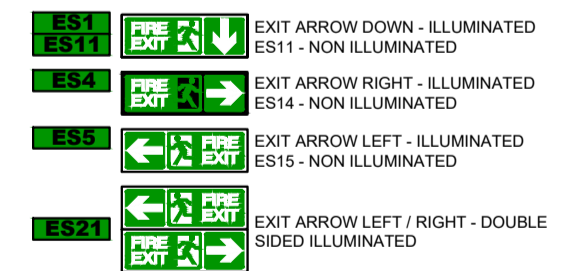
Provide fire extinguishers:  
- 1no. 9L Class A water fire extinguisher  
- 1no. 6L Class A foam fire extinguisher

Form new timber ramp at 1:15 gradient to receive non-slip paint finish: Watco Safety Grip Flex- Grey on landing  
Watco Safety Grip Flex - Blue on ramp  
Provide timber handrail to both sides.

Allow for simple emergency lighting installation / cleaners lights.

Form new timber ramp at 1:15 gradient to receive non-slip paint finish: Watco Safety Grip Flex- Grey on landing  
Watco Safety Grip Flex - Blue on ramp  
Provide timber handrail to both sides.

Install fire signage including exit signs over final exits and directional signage.



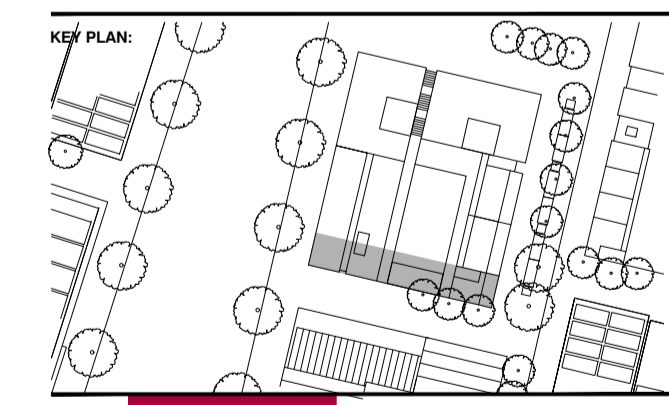
**GROUND FLOOR PLAN**

Allow for sundry alterations at internal and internal door thresholds and foul pop-up connections

Allow for BWIC with Services Installations

ALL SIGNAGE BY TENANT

1:50@A1 / 1:100@A3 - R6- PROPOSED RETAIL UNIT



ISSUED FOR: WHITE BOX

dga architects

CLIENT	ARGENT LLP
PROJECT	FENMAN HOUSE R6 RETAIL UNIT
DRAWING	GA PLAN GROUND FLOOR LEVEL
JOB NO.	1817
DRAWING NO.	GA-001
REVISION	C
DATE DRAWN	23.05.2018
DRAWN BY	TB
SCALE	1:100@A1

1817-GA-001\_C