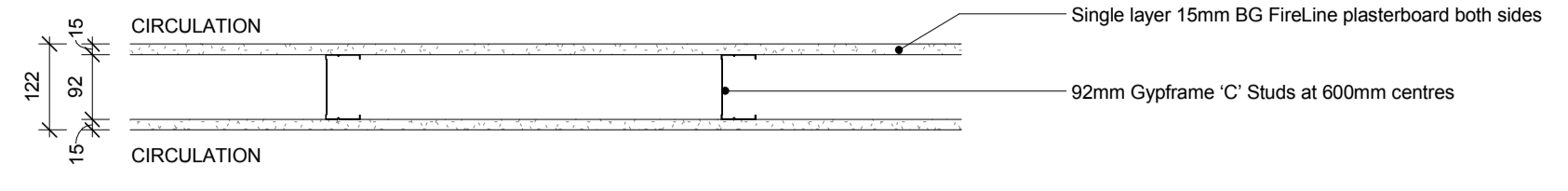
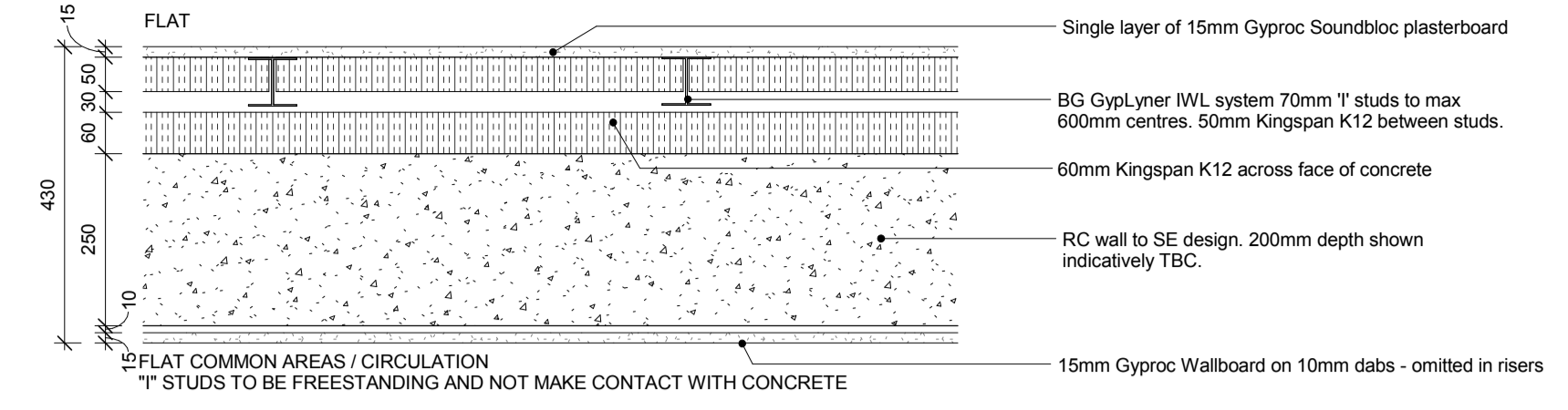


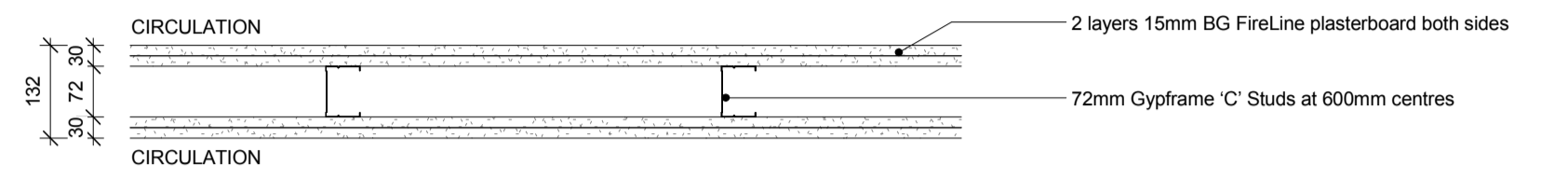
S13	Location BLOCKS A-E - BASEMENT BLOCK E - GROUND FLOOR CIRCULATION SPACES - MAX HEIGHT 4.7m		
	U-Value	Target N/A	Achieved N/A
	Fire Rating	60 mins	60 mins
	Acoustic Rating	N/A	N/A



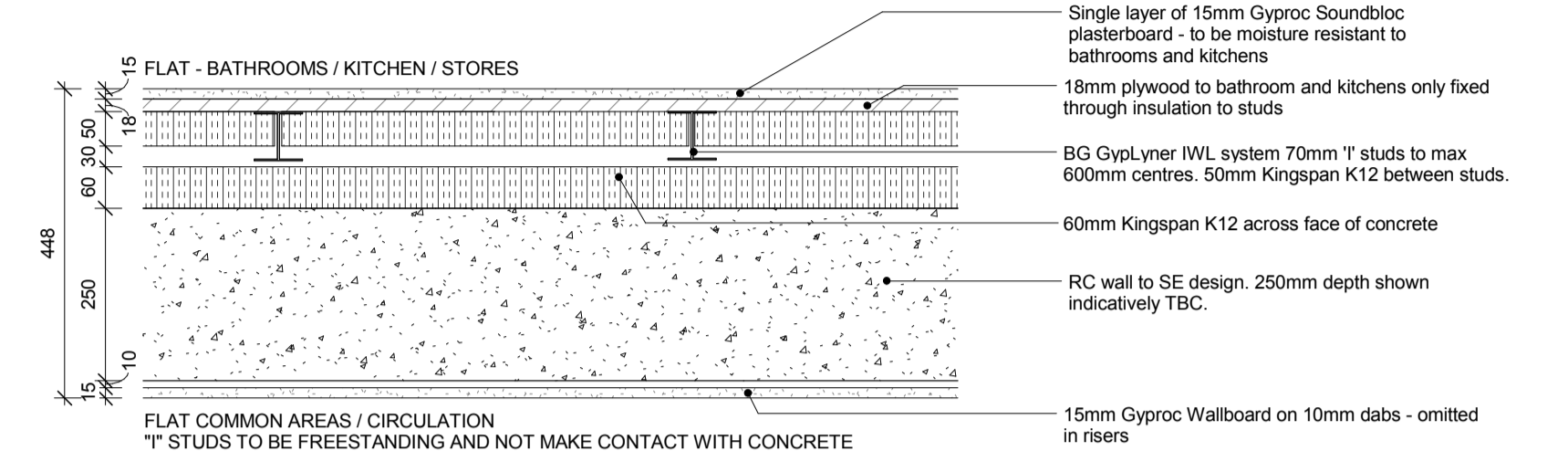
S21	Location ALL BLOCKS - GROUND FLOOR UPWARDS - AT COMMON AREA AND FLAT - MAX HEIGHT 3.9m		
	U-Value	Target 0.2 W/m²K	Achieved 0.18 W/m²K
	Fire Rating	A-E 60mins F 120mins	60mins 120mins
	Acoustic Rating	50dB	



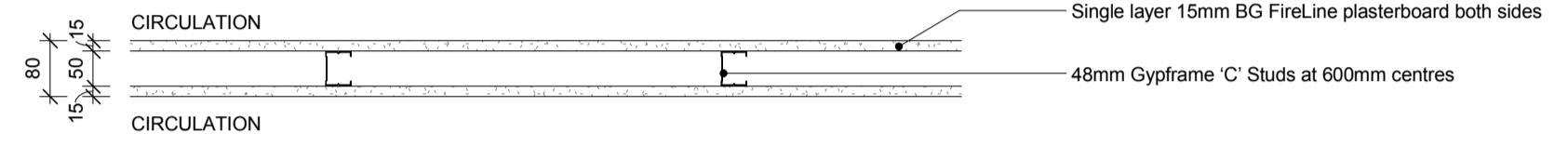
S14	Location BLOCK D, E + F BASEMENT + GROUND FLOORS CIRCULATION SPACES - MAX HEIGHT 4.9m		
	U-Value	Target N/A	Achieved N/A
	Fire Rating	120 mins	120 mins
	Acoustic Rating	N/A	N/A



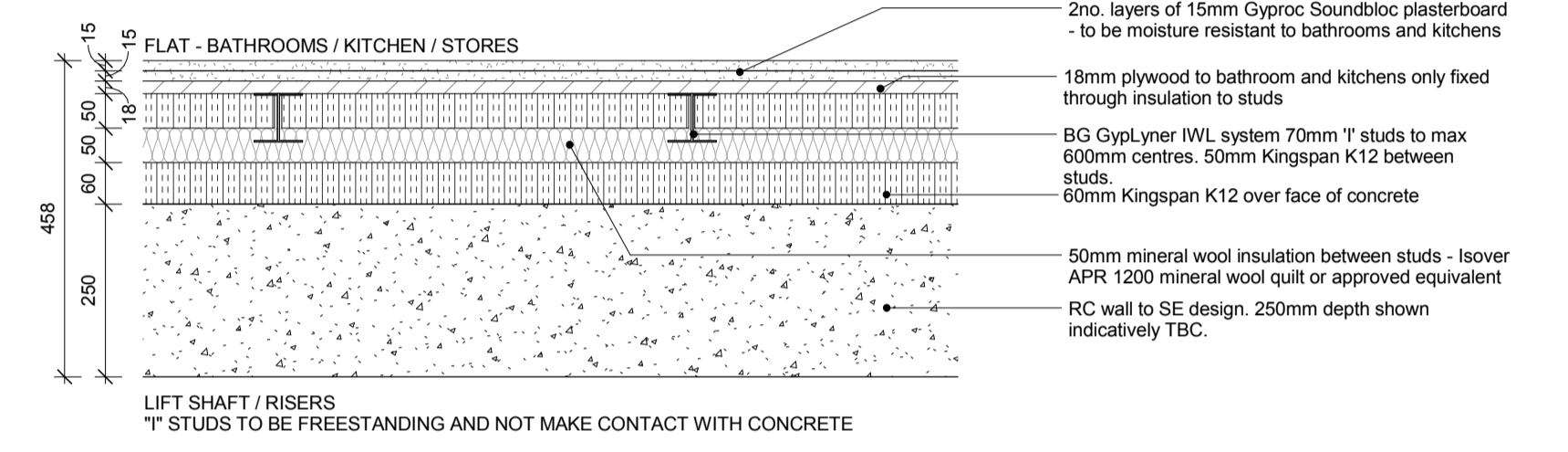
S22	Location BLOCK F - GROUND FLOOR UPWARDS - AT COMMON AREA AND FLAT - MAX HEIGHT 3.9m		
	U-Value	Target 0.2 W/m²K	Achieved 0.17 W/m²K
	Fire Rating	A-E 60mins F 120mins	60mins 120mins
	Acoustic Rating	50dB	



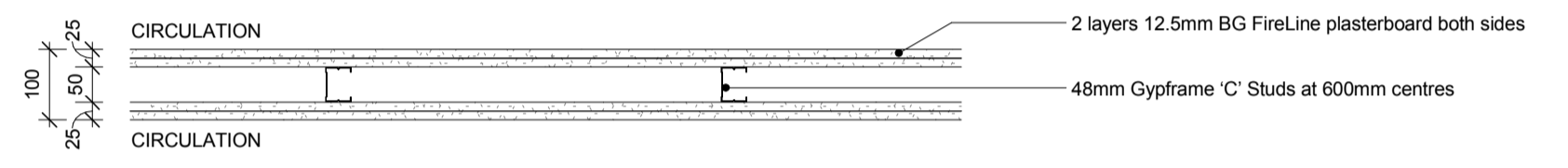
S15	Location BLOCKS A-E FLOORS GROUND TO FIFTH MAX HEIGHT 2.8m		
	U-Value	Target N/A	Achieved N/A
	Fire Rating	60 mins	60 mins
	Acoustic Rating	N/A	N/A



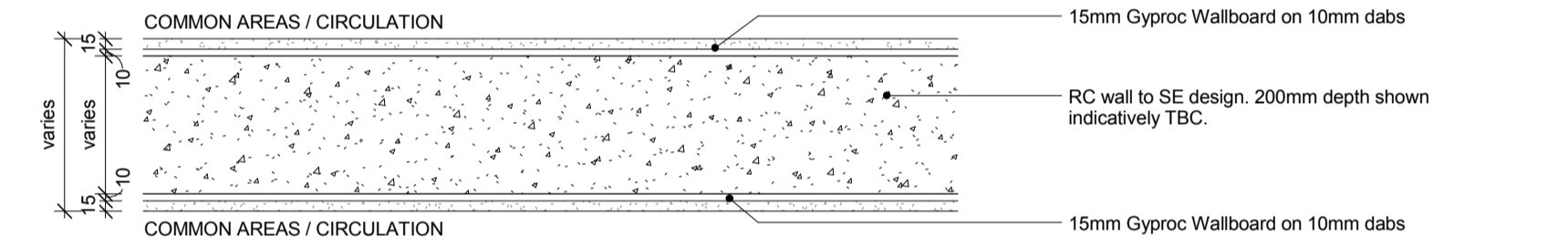
S23	Location BLOCK F - GROUND FLOOR UPWARDS - AT LIFT SHAFT / RISER AND FLAT - MAX HEIGHT 3.9m		
	U-Value	Target 0.2 W/m²K	Achieved 0.16 W/m²K
	Fire Rating	A-E 60mins F 120mins	60mins 120mins
	Acoustic Rating	50dB	



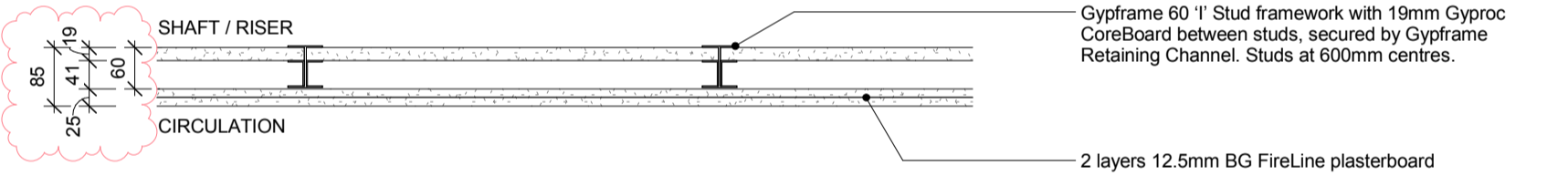
S16	Location BLOCK F FIRST FLOOR UPWARDS CIRCULATION SPACES - MAX HEIGHT 3.4m		
	U-Value	Target N/A	Achieved N/A
	Fire Rating	120 mins	120 mins
	Acoustic Rating	N/A	N/A



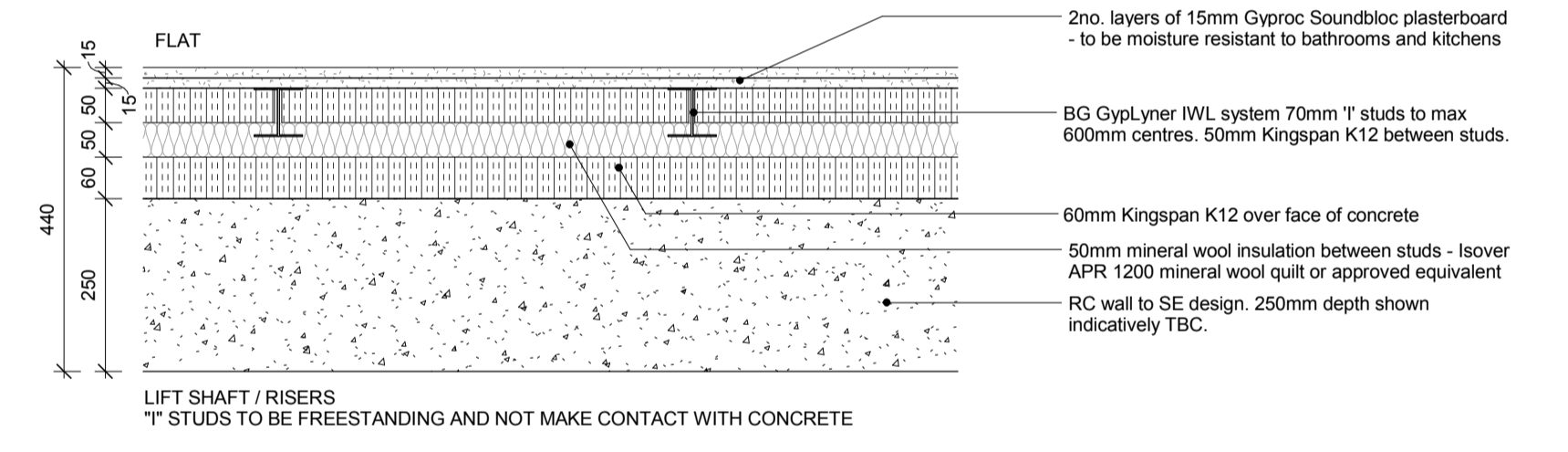
S24	Location ALL BLOCKS - ALL FLOORS - AT COMMON AREAS/CIRCULATION		
	U-Value	Target N/A	Achieved N/A
	Fire Rating	A-E 60mins F 120mins	60mins 120mins
	Acoustic Rating	N/A	N/A



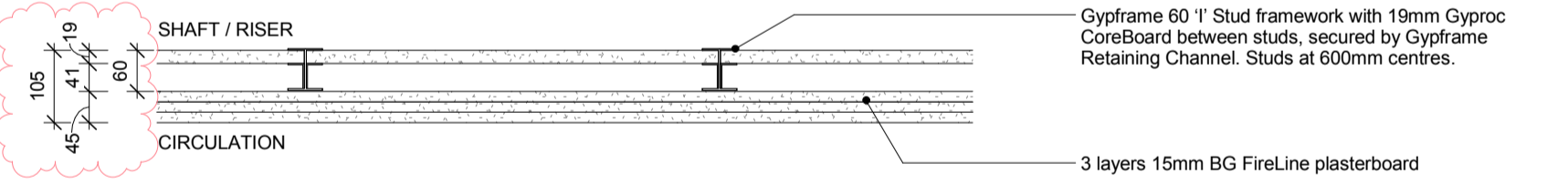
S17	Location SHAFTS / RISERS A-E ALL FLOORS A-C / FIRST UPWARDS D+E MAX HEIGHT 4.4m		
	U-Value	Target N/A	Achieved N/A
	Fire Rating	60 mins	60 mins
	Acoustic Rating	N/A	N/A



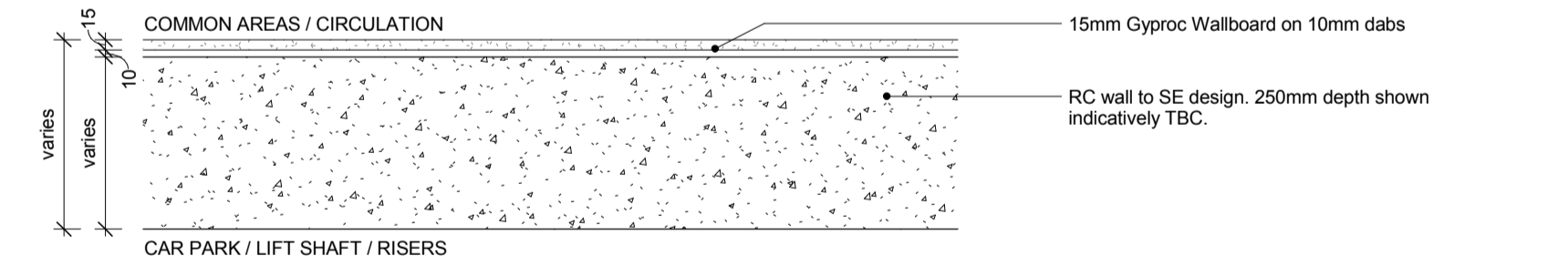
S25	Location BLOCK F - FIRST FLOOR UPWARDS - AT LIFT SHAFT / RISER AND FLAT - MAX HEIGHT 3.9m		
	U-Value	Target 0.2 W/m²K	Achieved 0.16 W/m²K
	Fire Rating	F 120mins	120mins
	Acoustic Rating	50dB	



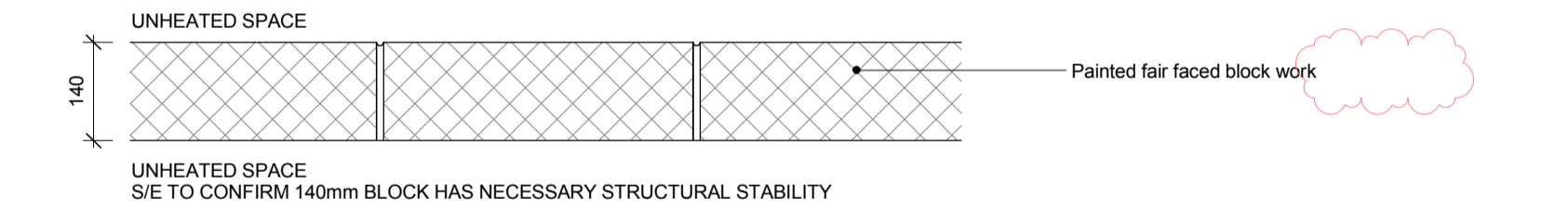
S18	Location SHAFTS - BLOCK F ALL FLOORS F / GROUND FLOOR D+E MAX HEIGHT 4.5m		
	U-Value	Target N/A	Achieved N/A
	Fire Rating	120 mins	120 mins
	Acoustic Rating	N/A	N/A



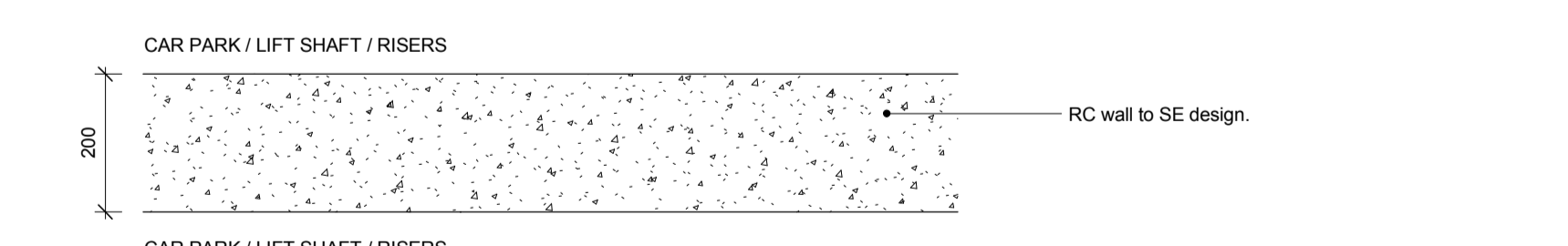
S26	Location BLOCK F - ALL FLOORS - AT LIFT SHAFT / RISER AND COMMON AREA		
	U-Value	Target N/A	Achieved N/A
	Fire Rating	A-E 60mins F 120mins	60mins 120mins
	Acoustic Rating	N/A	N/A



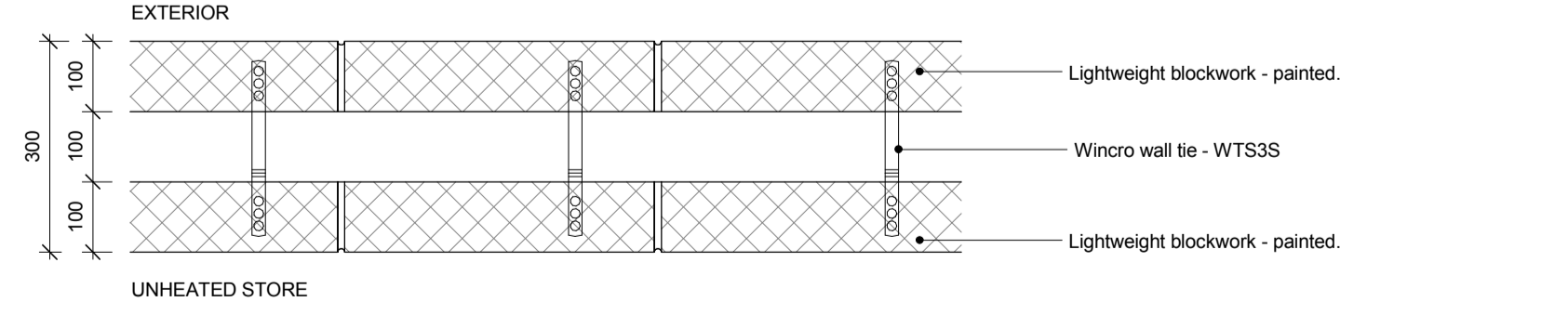
S19	Location BLOCKS A - F BASEMENT AND GROUND FLOORS BETWEEN UNHEATED SPACES		
	U-Value	Target N/A	Achieved N/A
	Fire Rating	60mins	*acceptable
	Acoustic Rating	N/A	N/A



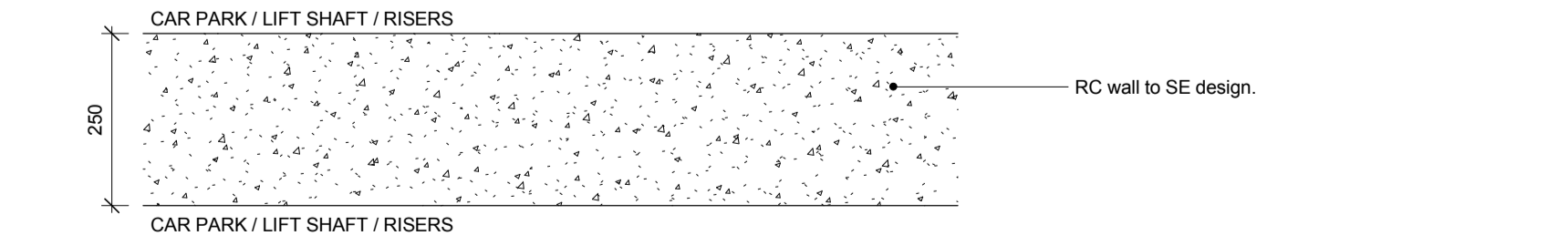
S27	Location ALL BLOCKS - BASEMENT - AT LIFT SHAFT / RISER AND STORES		
	U-Value	Target N/A	Achieved N/A
	Fire Rating	A-E 60mins F 120mins	60mins 120mins
	Acoustic Rating	N/A	N/A



S20	Location ENTRANCES TO BIN AND CYCLE STORES		
	U-Value	Target N/A	Achieved N/A
	Fire Rating	120min	*acceptable
	Acoustic Rating	N/A	N/A

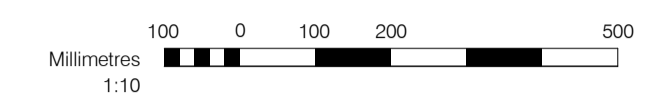


S28	Location ALL BLOCKS - BASEMENT - AT LIFT SHAFT / RISER AND STORES		
	U-Value	Target N/A	Achieved N/A
	Fire Rating	A-E 60mins F 120mins	60mins 120mins
	Acoustic Rating	N/A	N/A



GENERAL NOTES
This drawing is copyright of PTE architects
Use figured dimensions only. DO NOT SCALE.
All dimensions are in millimetres unless noted otherwise
All levels are in metres above Ordnance datum unless noted otherwise
This drawing must be read in conjunction with all other relevant drawings and specifications from the Architect and other consultants

SETTING OUT NOTES
All setting out to be confirmed on site prior to construction - any discrepancy must be immediately reported to the Architect.
All setting out to face of structure or to grid.
All partitions set out to studwork or structure. For setting out and specification of M&E services refer to M&E Consultants documents.
For setting out and specification of structure refer to Structural Engineer's documents.



NOTES:
TARGET ACOUSTIC RATINGS ARE 5dB ABOVE THE APPROVED DOCUMENT PART E REQUIREMENTS. ACOUSTIC CONSULTANT TO CONFIRM BUILD-UPS MEET TARGET ACOUSTIC REQUIREMENTS.
ACOUSTIC CONSULTANT TO CONFIRM DECIBEL REDUCTIONS ARE SATISFACTORY.
STRUCTURAL ENGINEER TO CONFIRM 200mm THICK RC WALLS MEET 120 MINS FIRE RESISTANCE REQUIREMENTS.

ACHIEVED U-VALUES TO BE CONFIRMED BY M+E ENGINEER

rev	date	description	dm	cc	aud
F	15/09/17	MINOR UPDATES AND ANNOTATION CHANGES. UPDATES INCLUDE TA COMMENTS.	TH	AM	
E	11/11/16	LEVEL 3 CONSTRUCTION ISSUE. U-VALUES UPDATED. IWL STUD POSITION MOVED IN TYPES S21-S25. NOTES UPDATED TO S23 + S25.	DB	EN	
D	25/08/16	HARD PLASTER REPLACED BY BOARD ON DABS. LOCATION UPDATED FOR TYPES S14, S17-S18. CONCRETE VARIES ON TYPE S21	AL	DPD	
C	16/02/16	ACOUSTIC, FIRE, THERMAL + HEIGHT INFORMATION UPDATED WITH RED TEXT	DB	DPD	
B	15/01/16	TYPES S24 - S28 ADDED.	DB	DPD	
A	21/08/15	TYPES S20 - S23 ADDED. PARTITIONS REMOVED FROM SHEET.	DB	DPD	
/	05/06/15	ISSUED FOR COMMENT	DB	CC	
			dm	aud	

LEVEL 3 FOR CONSTRUCTION

Diespeker Wharf
38 Graham Street
London N1 8JX
020 7336 7777
forename.surname@ptea.co.uk
@ptearchitects
www.pollardthomasedwards.co.uk

**Pollard
Thomas
Edwards**

project	job number	drawn	audited	scale	date
ABBEY AREA PHASE 1	15-029	DB	CC	1:10@A1	JUN 15
drawing title	drawing number	revision			
TYPICAL SEPARATING WALLS SHEET 2	029_A(22)_002	F			