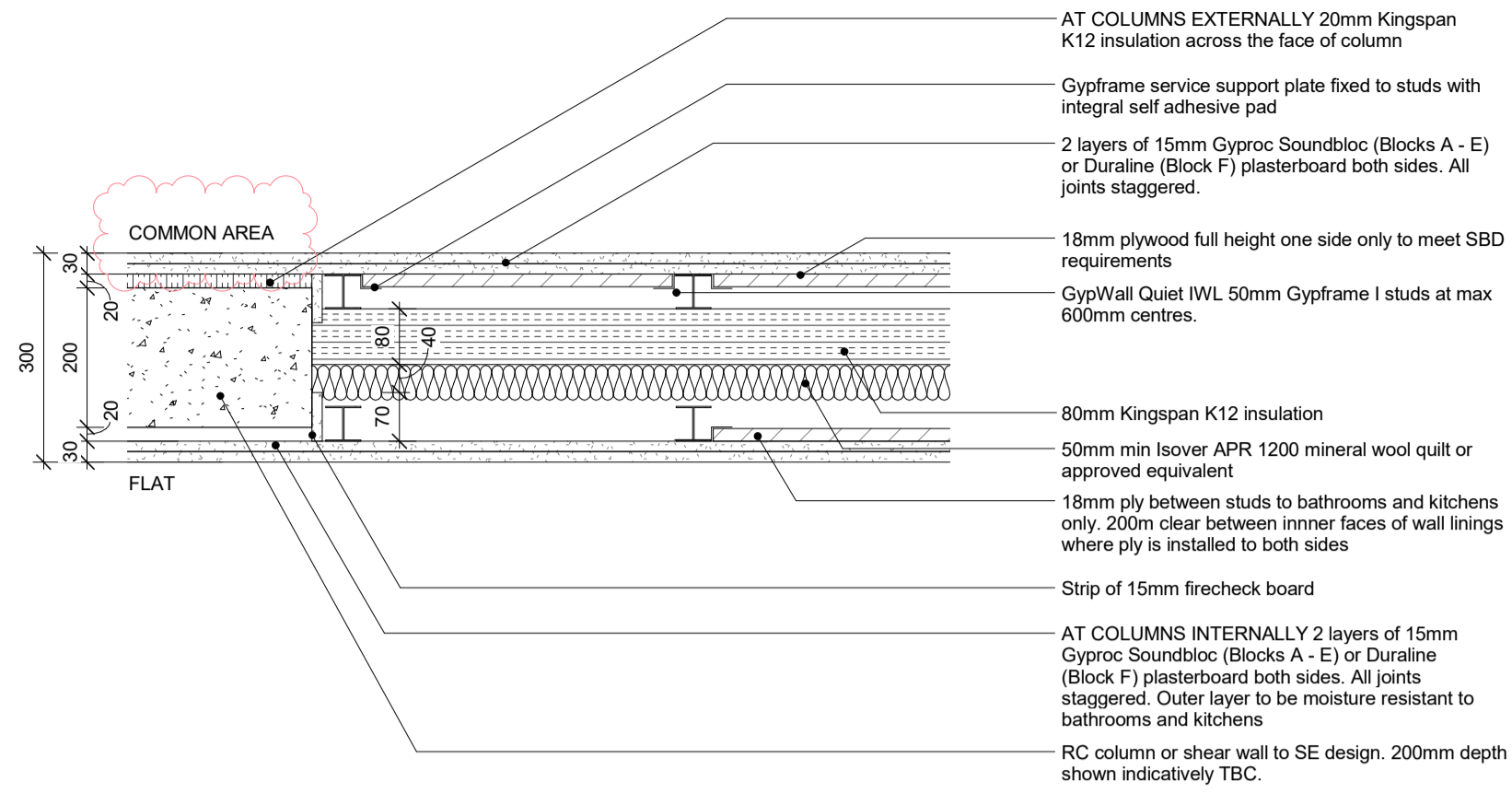
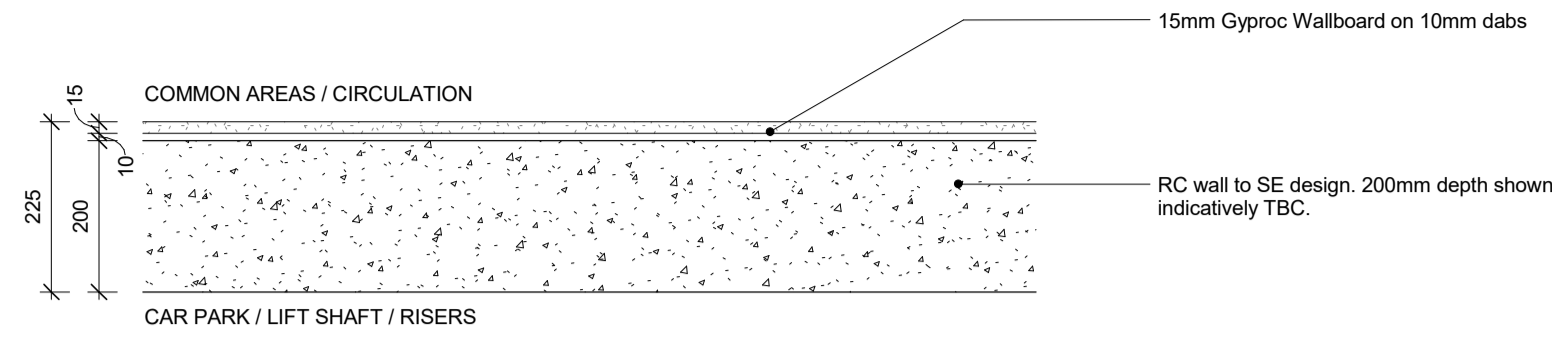


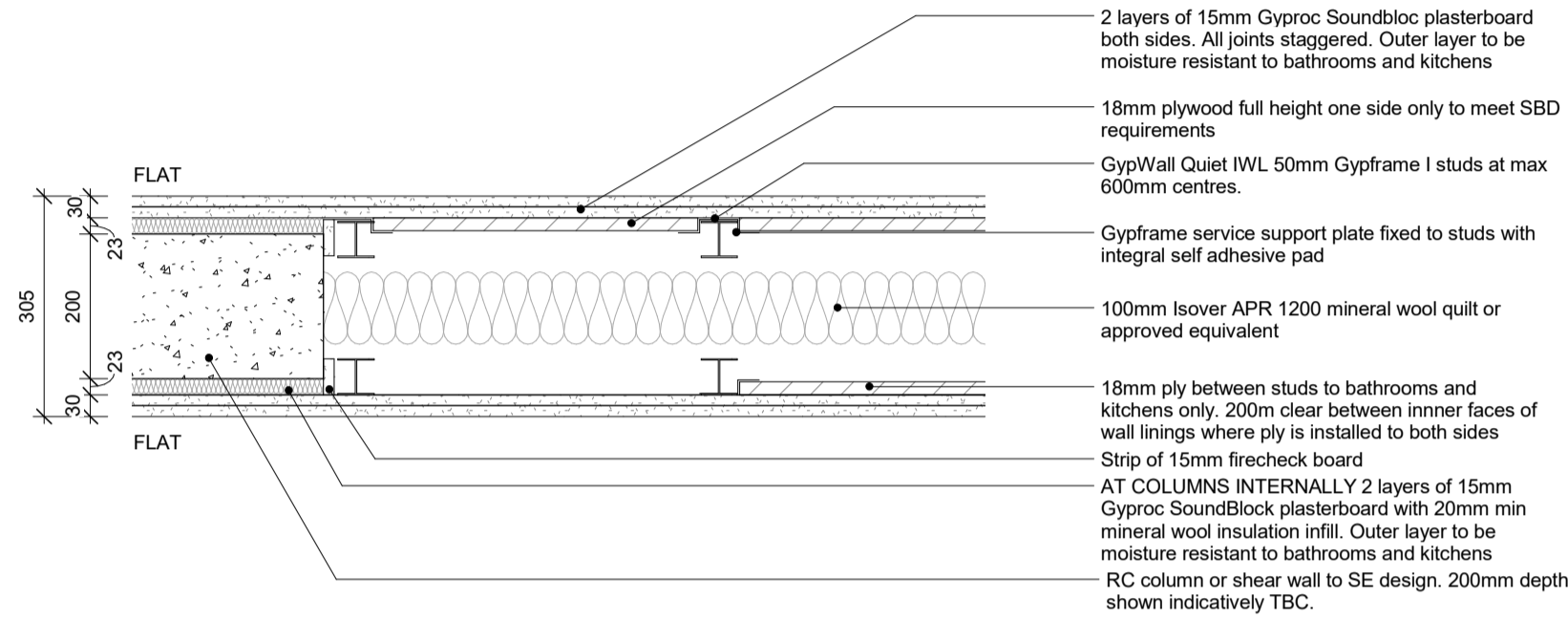
S1	Location BLOCKS A - F ALL FLOORS - COMMON CORRIDORS MAX HEIGHT 2.8m		
	U-Value	Target	Achieved
	0.2 W/m ² K		0.18 W/m ² K
	Fire Rating	A-E 60mins F 120mins	60mins 120mins
Acoustic Rating 50dB			
Plasterboard linings differ between blocks to meet fire ratings			



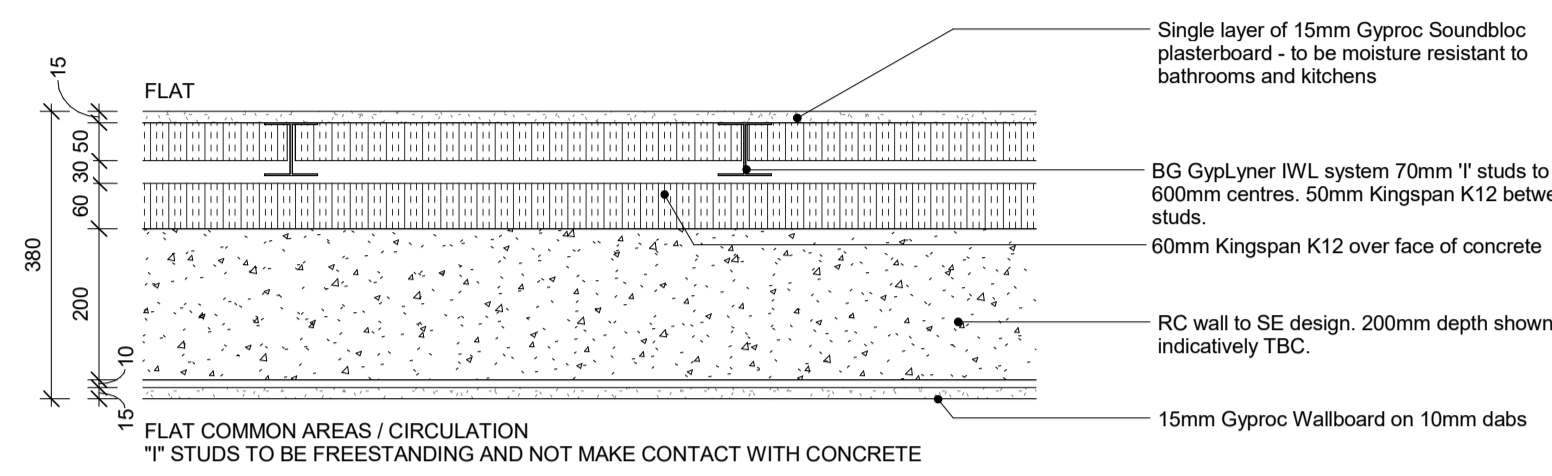
S6	Location ALL BLOCKS - ALL FLOORS - AT LIFT SHAFT / RISER AND COMMON AREA		
	U-Value	Target	Achieved
	N/A		N/A
	Fire Rating	A-E 60mins F 120mins	60mins 120mins
Acoustic Rating N/A			



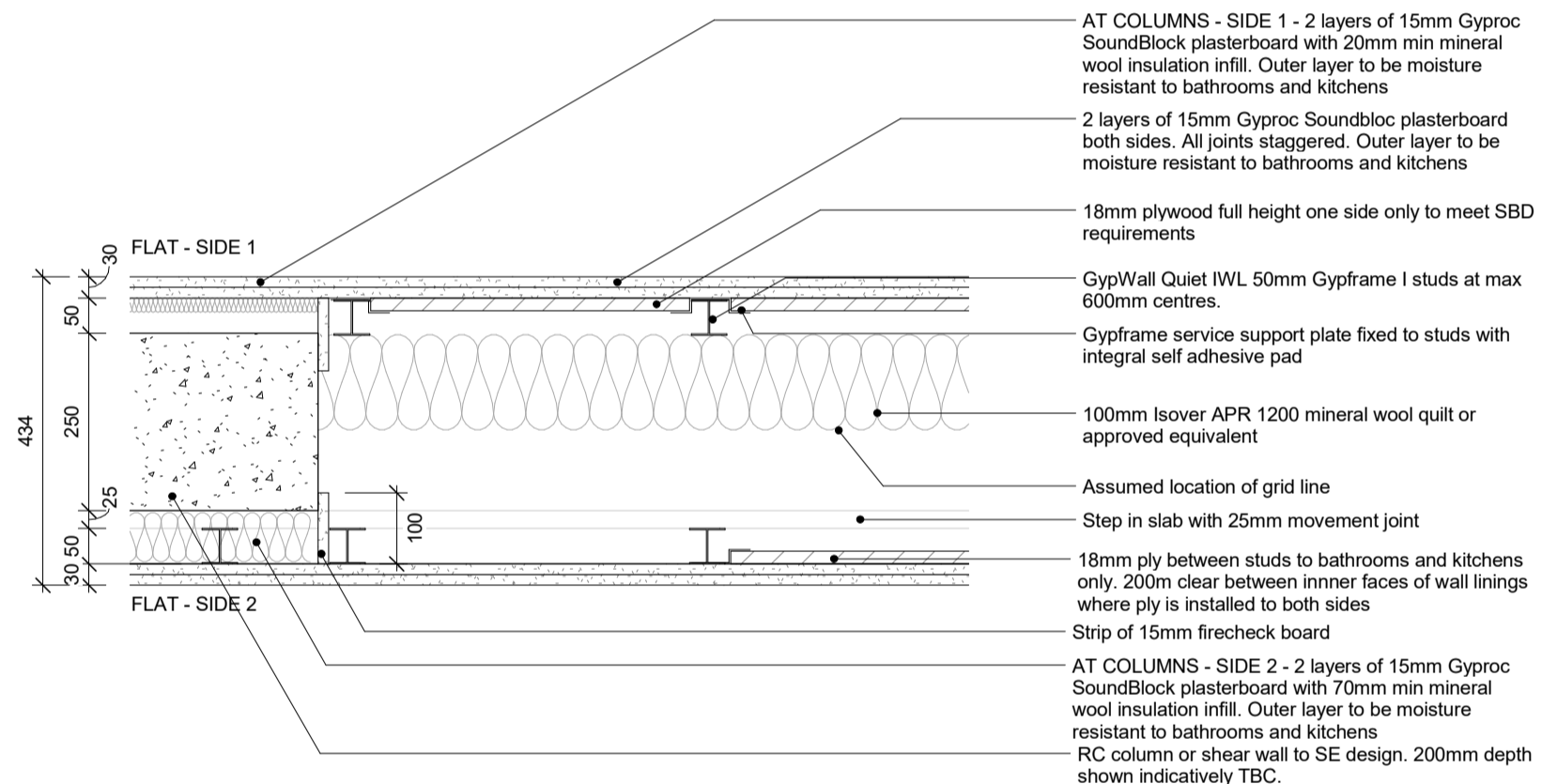
S2	Location BLOCKS A - F ALL FLOORS - BETWEEN FLATS MAX HEIGHT 2.8m		
	U-Value	Target	Achieved
	0.2 W/m ² K		0.2 W/m ² K
	Fire Rating	60mins	60mins
Acoustic Rating 50dB			
Plasterboard linings differ between blocks to meet fire ratings			
WALL TYPE SUBJECT TO BC APPROVAL			
EFFECTIVE EDGE SEALING AT ALL EXPOSED EDGES NECESSARY TO AVOID THERMAL BYPASS			



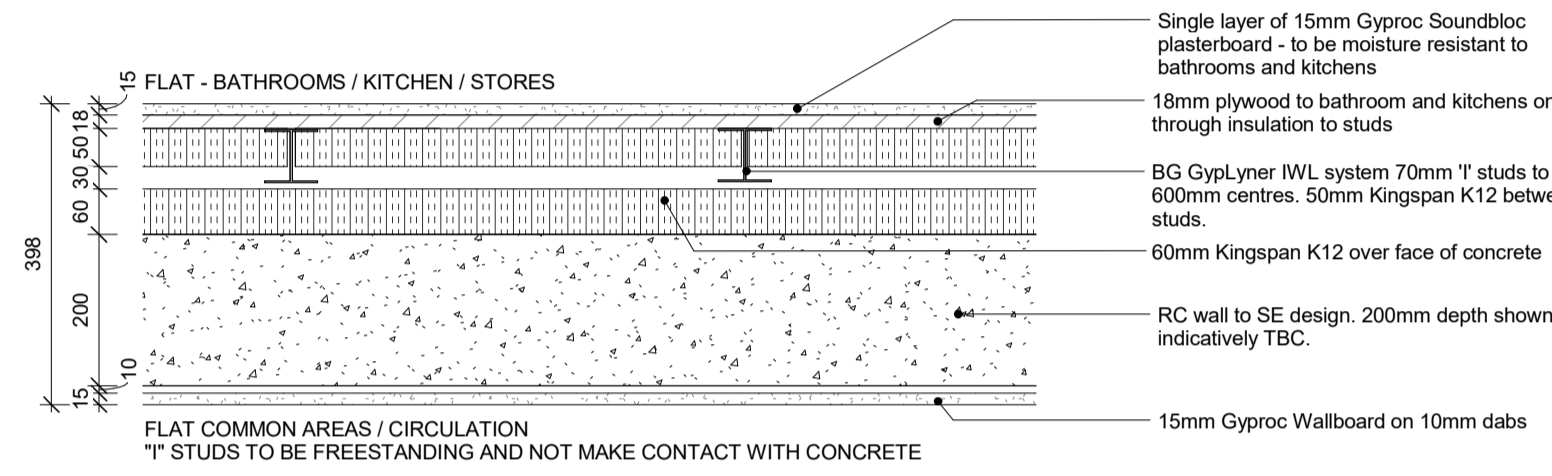
S7	Location ALL BLOCKS - GROUND FLOOR UPWARDS - AT COMMON AREA AND FLAT - MAX HEIGHT 3.9m		
	U-Value	Target	Achieved
	0.2 W/m ² K		0.18 W/m ² K
	Fire Rating	A-E 60mins F 120mins	60mins 120mins
Acoustic Rating 50dB			



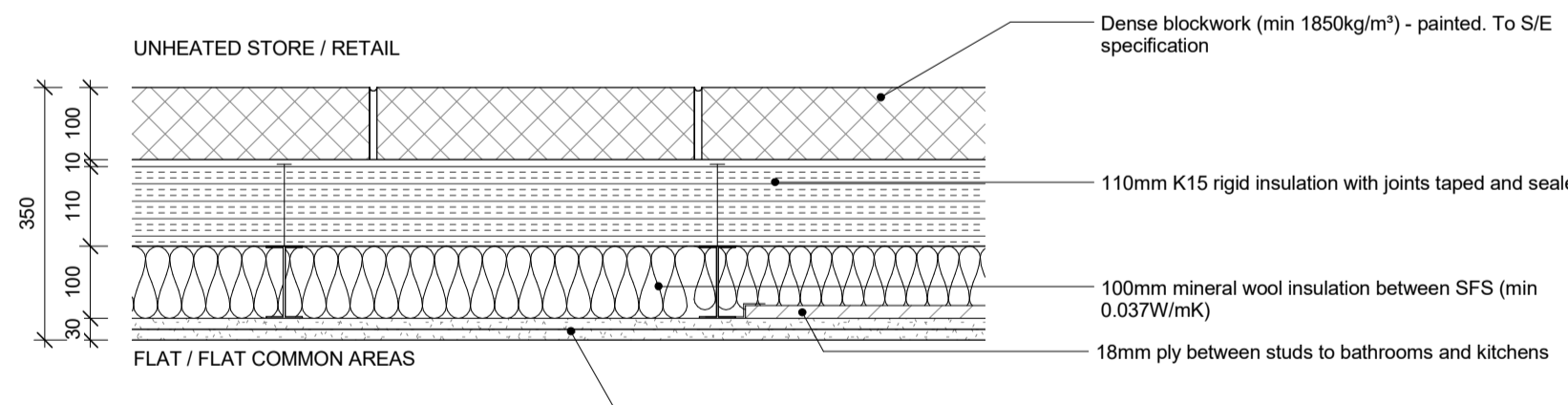
S3	Location BLOCKS A - E. ALL FLOORS AT STEPS IN SLAB BETWEEN BLOCKS MAX HEIGHT 2.8m		
	U-Value	Target	Achieved
	0.2 W/m ² K		0.2 W/m ² K
	Fire Rating	60mins	60mins
Acoustic Rating 50dB			
WALL TYPE UNDER REVIEW FOLLOWING COORDINATED DESIGN DEVELOPMENT WITH SE			
EFFECTIVE EDGE SEALING AT ALL EXPOSED EDGES NECESSARY TO AVOID THERMAL BYPASS			



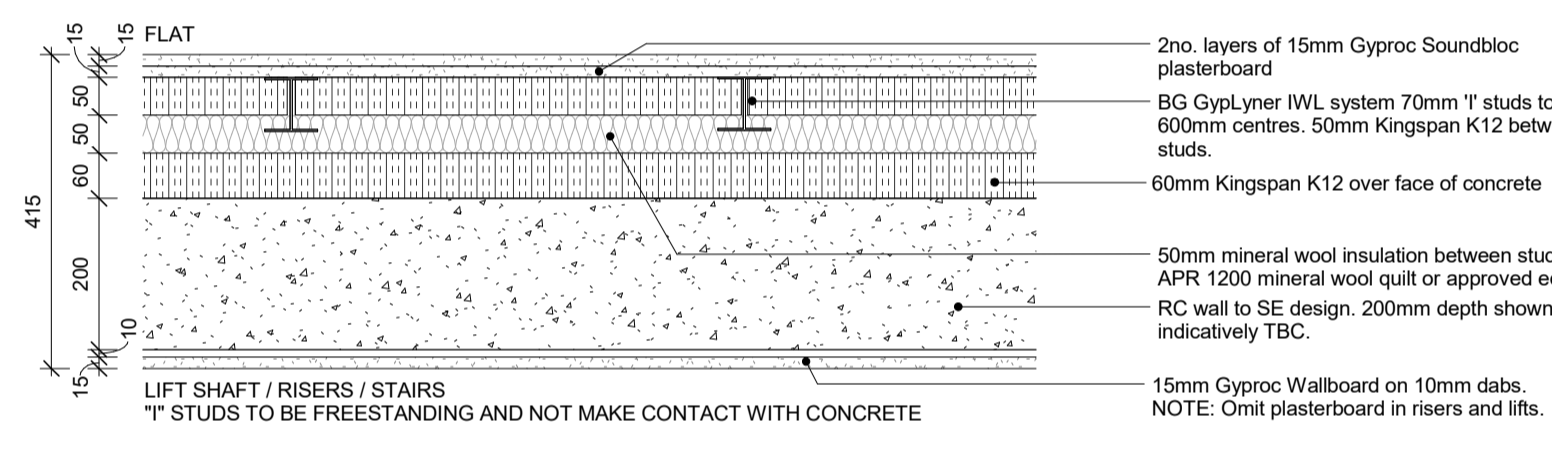
S8	Location ALL BLOCKS - GROUND FLOOR UPWARDS - AT COMMON AREA AND FLAT - MAX HEIGHT 3.9m		
	U-Value	Target	Achieved
	0.2 W/m ² K		0.17 W/m ² K
	Fire Rating	A-E 60mins F 120mins	60mins 120mins
Acoustic Rating 50dB			



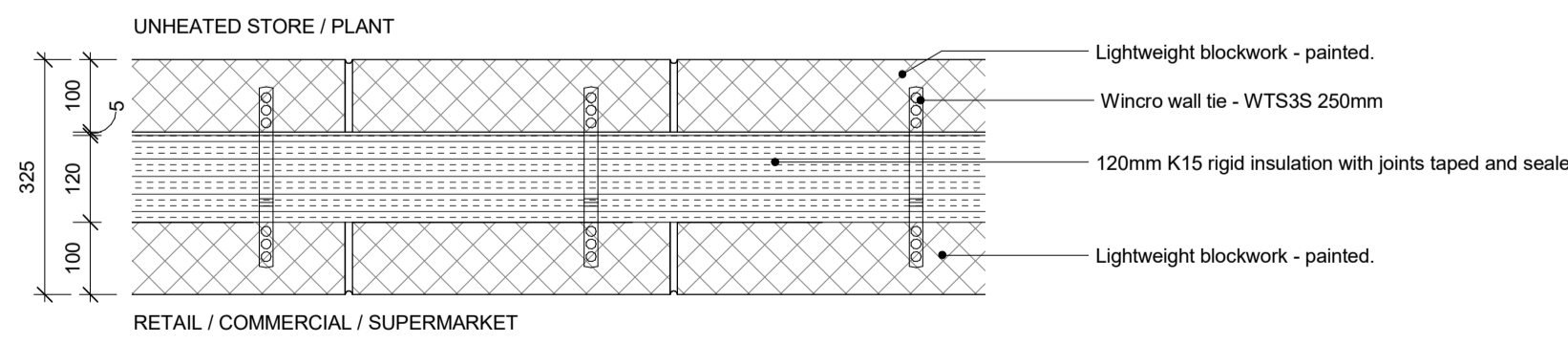
S4	Location GROUND FLOOR BLOCKS A - E - UNHEATED SPACES TO FLATS		
	U-Value	Target	Achieved
	0.12 W/m ² K		0.13 W/m ² K
	Fire Rating	60mins	60mins
Acoustic Rating 50dB			



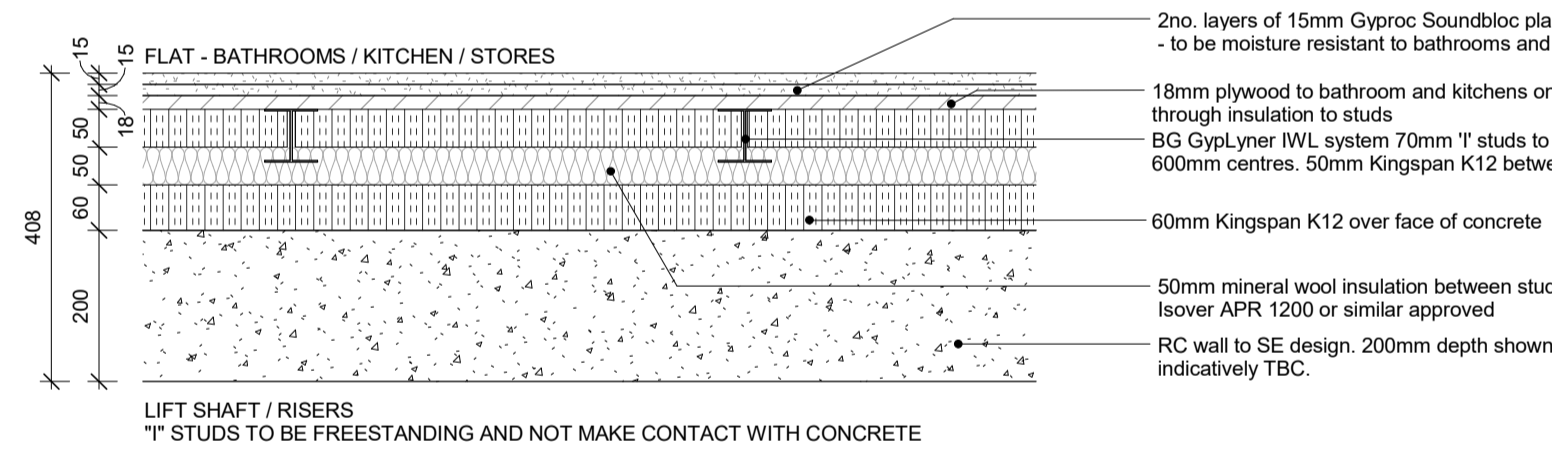
S9	Location ALL BLOCKS - GROUND FLOOR UPWARDS - AT LIFT SHAFT / STAIRS / RISER AND FLAT - MAX HEIGHT 3.9m		
	U-Value	Target	Achieved
	0.2 W/m ² K		0.16 W/m ² K
	Fire Rating	A-E 60mins F 120mins	60mins 120mins
Acoustic Rating 50dB			



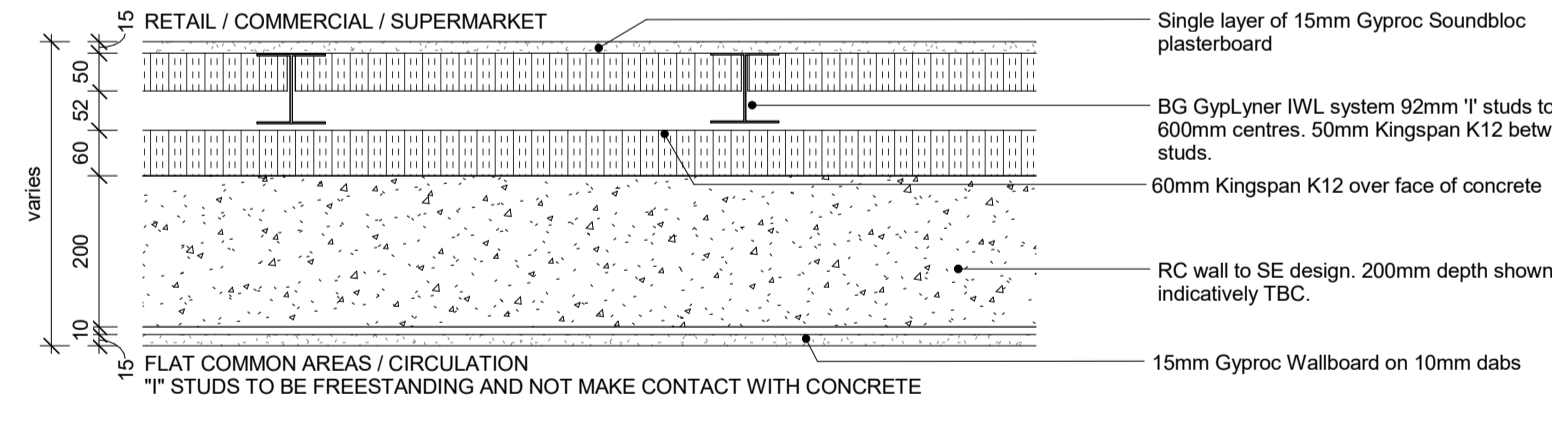
S5	Location BLOCKS D + E GROUND FLOOR - UNHEATED TO HEATED SPACES		
	U-Value	Target	Achieved
	0.13 W/m ² K		0.15 W/m ² K
	Fire Rating	60mins 120mins	60mins 120mins
Acoustic Rating N/A			



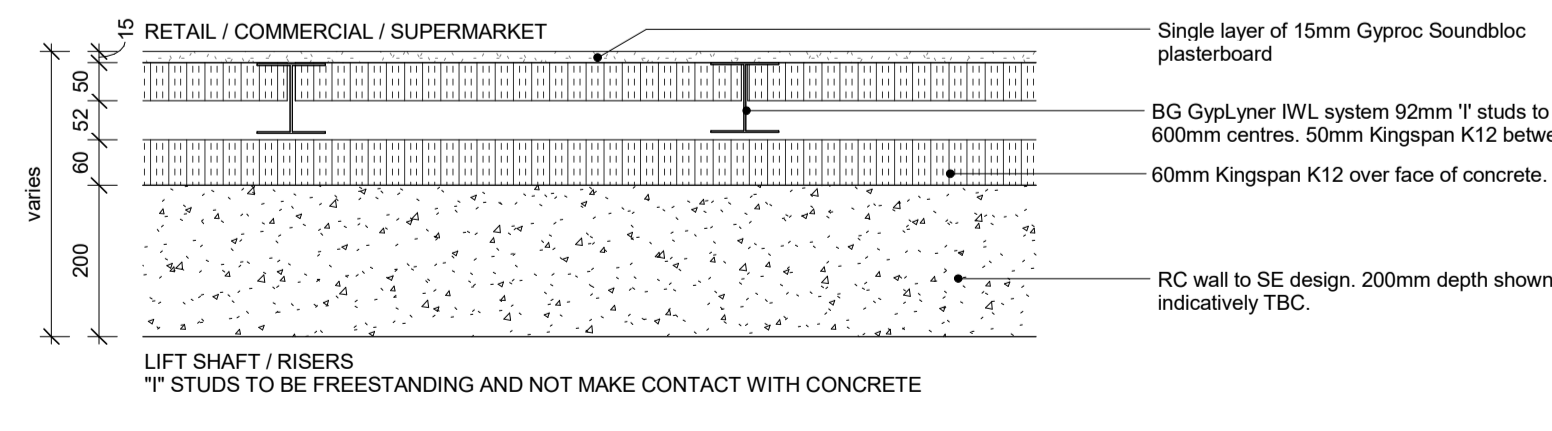
S10	Location ALL BLOCKS - GROUND FLOOR UPWARDS - AT LIFT SHAFT / RISER AND FLAT - MAX HEIGHT 3.9m		
	U-Value	Target	Achieved
	0.2 W/m ² K		0.16 W/m ² K
	Fire Rating	A-E 60mins F 120mins	60mins 120mins
Acoustic Rating 50dB			



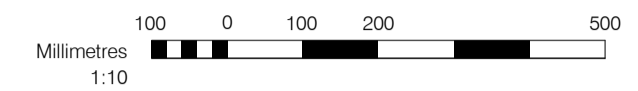
S11	Location BLOCKS D, E + F - GROUND FLOOR AROUND FLAT CORES - MAX HEIGHT 5.4m		
	U-Value	Target	Achieved
	0.2 W/m ² K		0.18 W/m ² K
	Fire Rating	A-E 60mins F 120mins	60mins 120mins
Acoustic Rating 50dB			



S12	Location BLOCKS D, E + F - GROUND FLOOR AROUND RISERS AND LIFT SHAFTS MAX HEIGHT 5.4m		
	U-Value	Target	Achieved
	0.2 W/m ² K		0.18 W/m ² K
	Fire Rating	A-E 60mins F 120mins	60mins 120mins
Acoustic Rating 50dB			



GENERAL NOTES	SETTING OUT NOTES
This drawing is copyright of PTE architects	All setting out to be confirmed on site prior to construction - any discrepancy must be immediately reported to the Architect.
Use figured dimensions only. DO NOT SCALE. All dimensions are in millimetres unless noted otherwise	All setting out to face of structure or to grid.
All levels are in metres above Ordnance datum unless otherwise specified	All partitions set out to studwork or structure. For setting out and specification of M&E services refer to M&E Consultants documents.
This drawing must be read in conjunction with all other relevant drawings and specifications from the Architect and other consultants	For setting out and specification of structure refer to Structural Engineer's documents.



NOTES:

TARGET ACOUSTIC RATINGS ARE 5dB ABOVE THE APPROVED DOCUMENT PART E REQUIREMENTS. ACOUSTIC CONSULTANT TO CONFIRM BUILD-UPS MEET TARGET ACOUSTIC REQUIREMENTS.

ACOUSTIC CONSULTANT TO CONFIRM DECIBEL REDUCTIONS ARE SATISFACTORY.

STRUCTURAL ENGINEER TO CONFIRM 200mm THICK RC WALLS MEET 120 MINS FIRE RESISTANCE REQUIREMENTS.

ACHIEVED U-VALUES TO BE CONFIRMED BY M+E ENGINEER

G	19/10/17	NDA COMMENTS INCORPORATED INTO DRAWING AS CLOUDED	DS	DPD
F	08/09/17	RIGID KINGSPAN INSULATION REPLACED WITH ROCKWOOL AS PER CLIENTS REQUEST. CAVITY TRAYS AND WALL TIES AMENDED TO SUIT. UPDATES INCLUDE RELEVANT TA COMMENTS	TH	AM
E	11/11/16	LEVEL 3 CONSTRUCTION ISSUE S2 DURALINE PLASTERBOARD REMOVED NOTES ADDED TO S2 + S3. U-VALUES UPDATED. IWL STUD POSITION MOVED IN TYPES S7-S12 NOTES UPDATED TO S9 + S10.	DB	EN
D	25/08/16	HARD PLASTER REPLACED BY BOARD ON DABS. PLASTERBOARD ADDED TO TYPE S9. TYPE S11&S12 CONCRETE VARIES	AL	DPD
C	16/02/16	ACOUSTIC, FIRE, THERMAL + HEIGHT INFORMATION UPDATED WITH RED TEXT	DB	DPD
B	15/01/16	S4 UPDATED TO REFLECT RBA ADVICE.	DB	DPD
A	21/08/15	S1-S3 SYSTEM UPDATED TO GYPWALL QUIET IWL TYPE FOLLOWING BG ADVICE. DURALINE REPLACES FIRELINE IN S1. MINERAL WOOL + ADDITIONAL LAYER OF SOUNDBLOC ADDED TO S9 + S10. COLUMN WIDTH INCREASED TO S3.	DB	DPD
/	05/06/15	ISSUED FOR COMMENT	DB	CC
rev	date	description	db	aud
drawing status				

LEVEL 3 FOR CONSTRUCTION

Diespeker Wharf
38 Graham Street
London N1 8JX
020 7336 7777
forename.surname@pte.co.uk
@ptearchitects
www.pollardthomasedwards.co.uk

**Pollard
Thomas
Edwards**

project	job number	drawn	audited	scale	date
ABBEY AREA PHASE 1	15-029	DB	CC	1:10@A1	JUN 15
drawing title	drawing number	revision			
TYPICAL SEPARATING WALLS SHEET 1	029_A(22)_001	G			