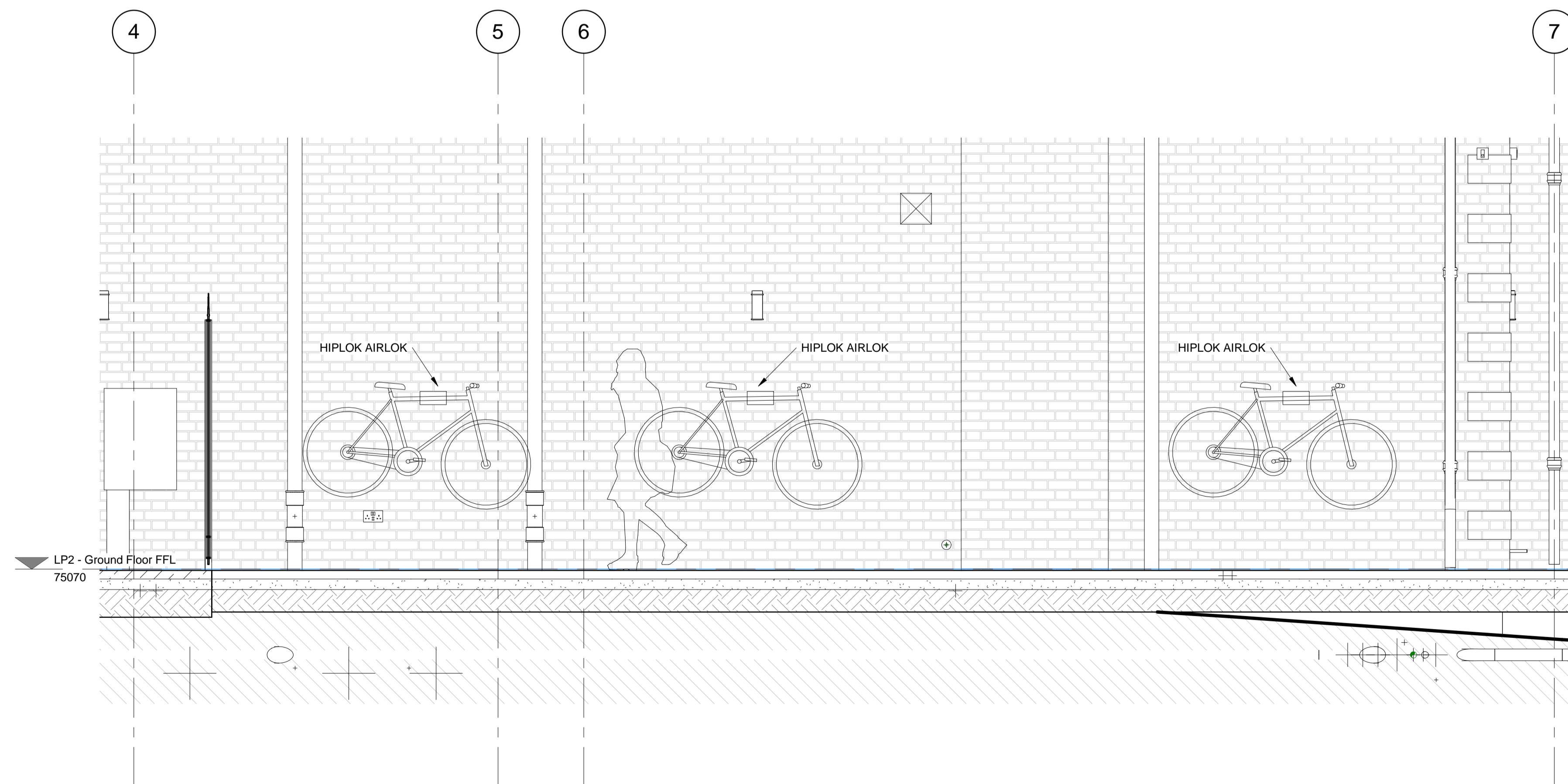


1 External Details - Bike Storage Plan - 6B
1 : 25



2 External Details - Bike Storage Elevation - 6B
1 : 25

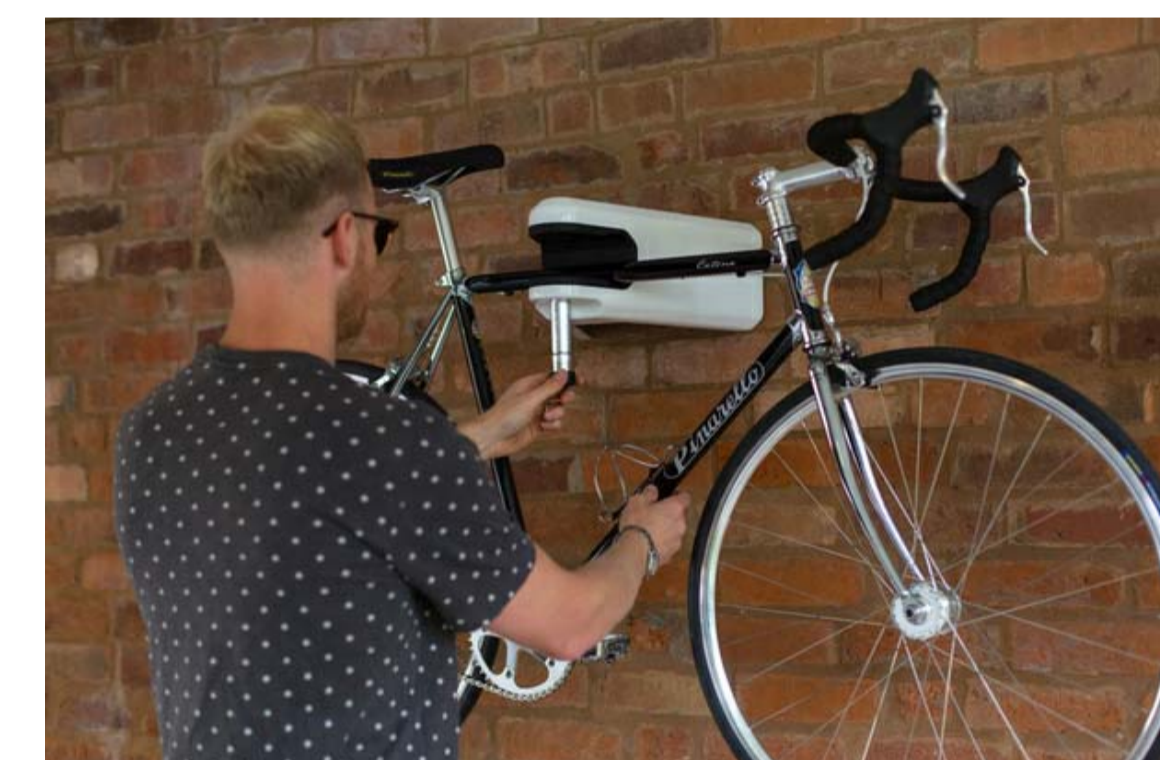
Planning condition requirement no. 15 of 2015/7025/P.

Details of secure and covered cycle storage area for two cycles for each of the proposed houses. The facility shall be provided in its entirety prior to the first occupation and permanently retained thereafter.

Reason: To ensure the development provides adequate cycle parking facilities in accordance with the requirements of policy CS11 of the London Borough of Camden Local Development Framework Core Strategy and policy DP17 and DP18 of the London Borough of Camden Local Development Framework Development Policies.

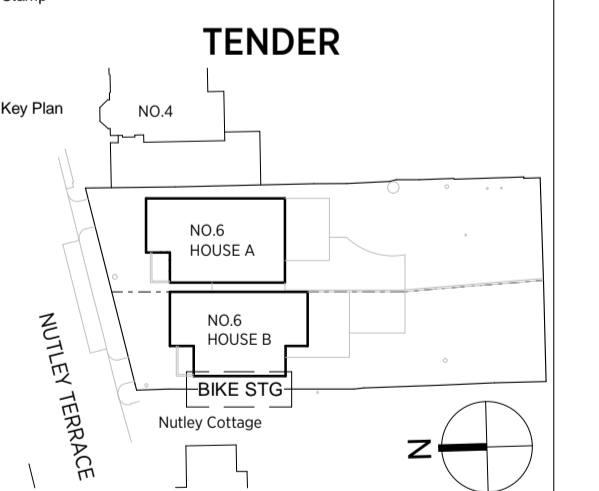
General notes:
This drawing is copyright of KSR architects. This drawing must be read in conjunction with the Designer's Risk Assessment, specification and all other relevant documentation and drawings. KSR architects accept no liability for any expense, loss or damage of whatsoever nature and however arising from any variation made to this drawing or in the execution of the work to which it relates which has not been referred to them and their approval obtained.
Do not scale from this drawing or the digital data, only figured dimensions are to be used. For Planning refer to linear scale.
Check all dimensions on site prior to carrying out any works - advise any discrepancy

Notes/Legends



HIPILOK AIRLOK IMAGE
SECURITY BIKE STORAGE HANGER

Rev	Description	Date	Chkd
© KSR Architects			



KSRARCHITECTS
KSR Architects LLP
14 Greenland Street
London NW1 0ND
t +44 (0)20 7938 9000
e mail@ksrarchitects.com
www.ksrarchitects.com

Project:
6A + 6B NUTLEY TERRACE
London NW3 5BX

Title:
Cycle storage area

Date: 08/03/18	Drawn By/Author	Check/Checker
Scale: 1:50 @ A1	Status: Tender	

Project Ref: 17058	Drawing No: 4-6B-481	Revision: -
------------------------------	--------------------------------	----------------