



View to the left of entrance
for context



Entrance as visible from street

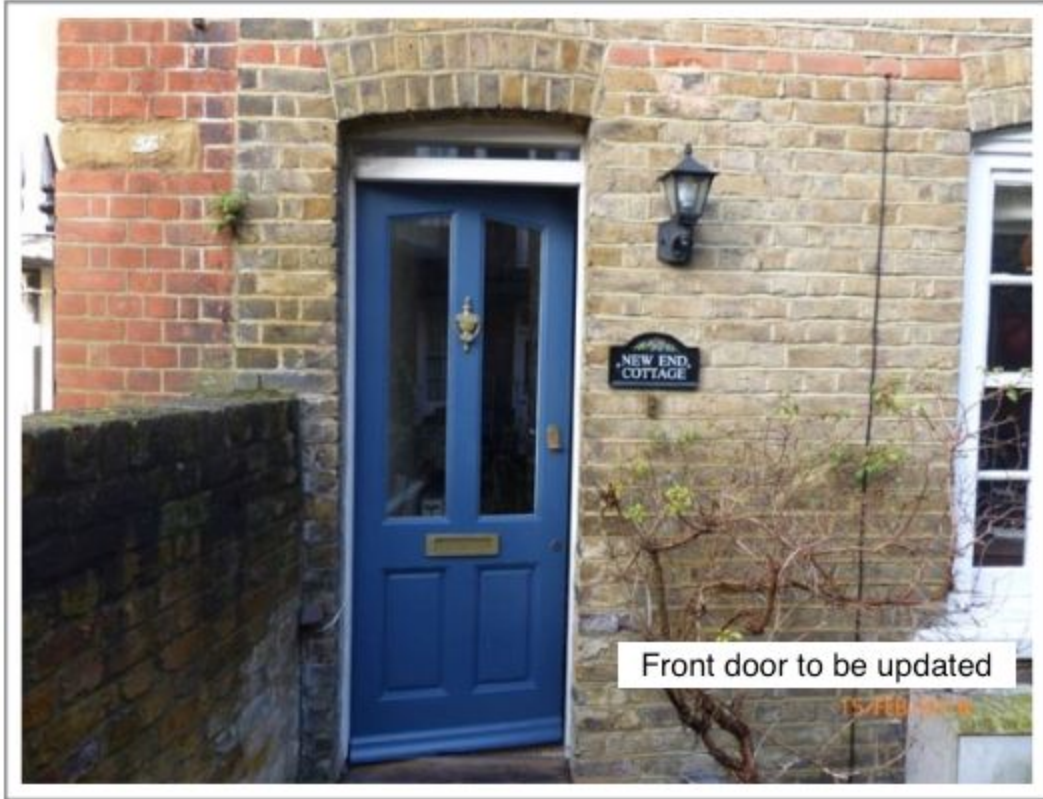




Front view of cottage



Front windows to be replaced with
replica double-glazed versions



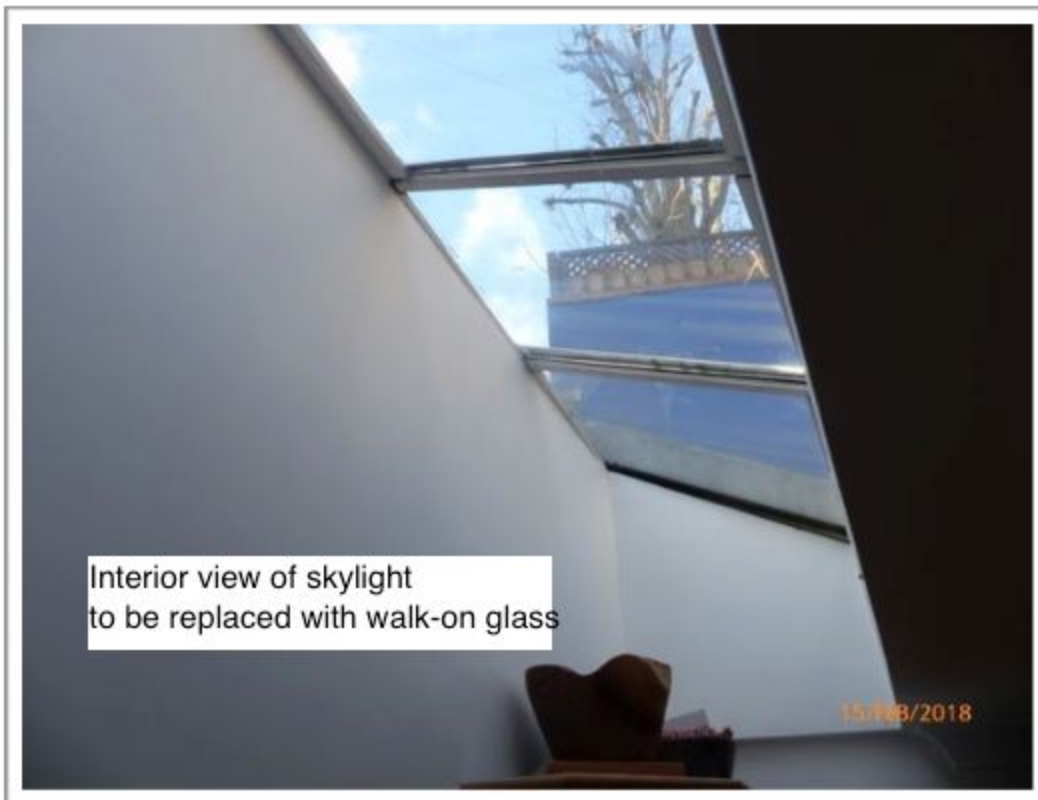


All rear windows to be replaced



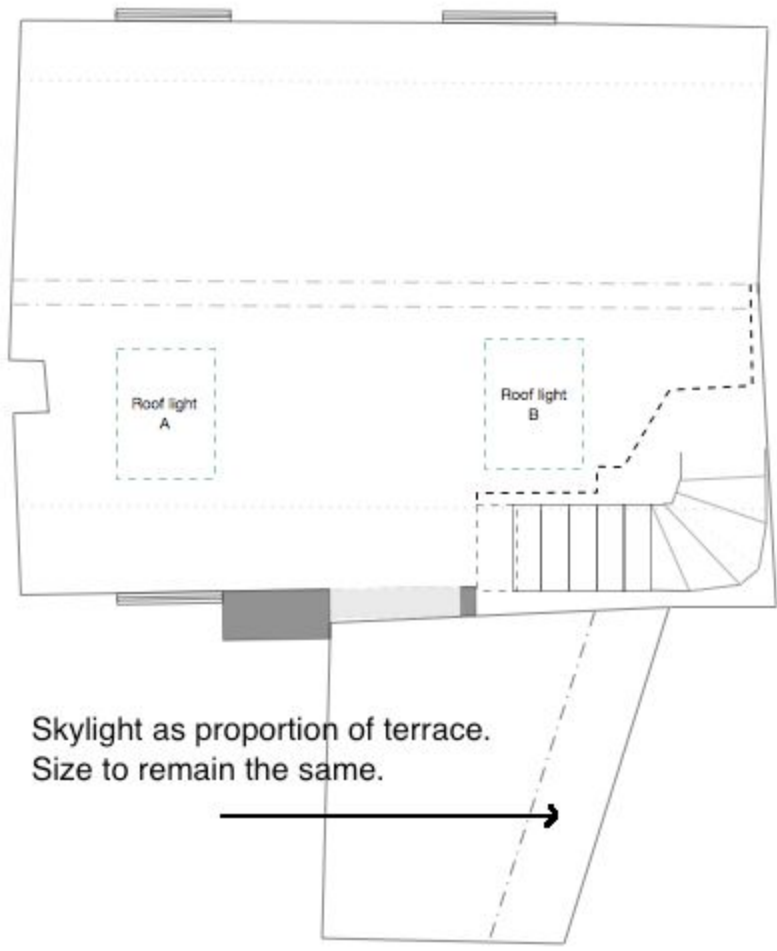
Skylight to be replaced with walk-on, flat glass

15/FEB/2018



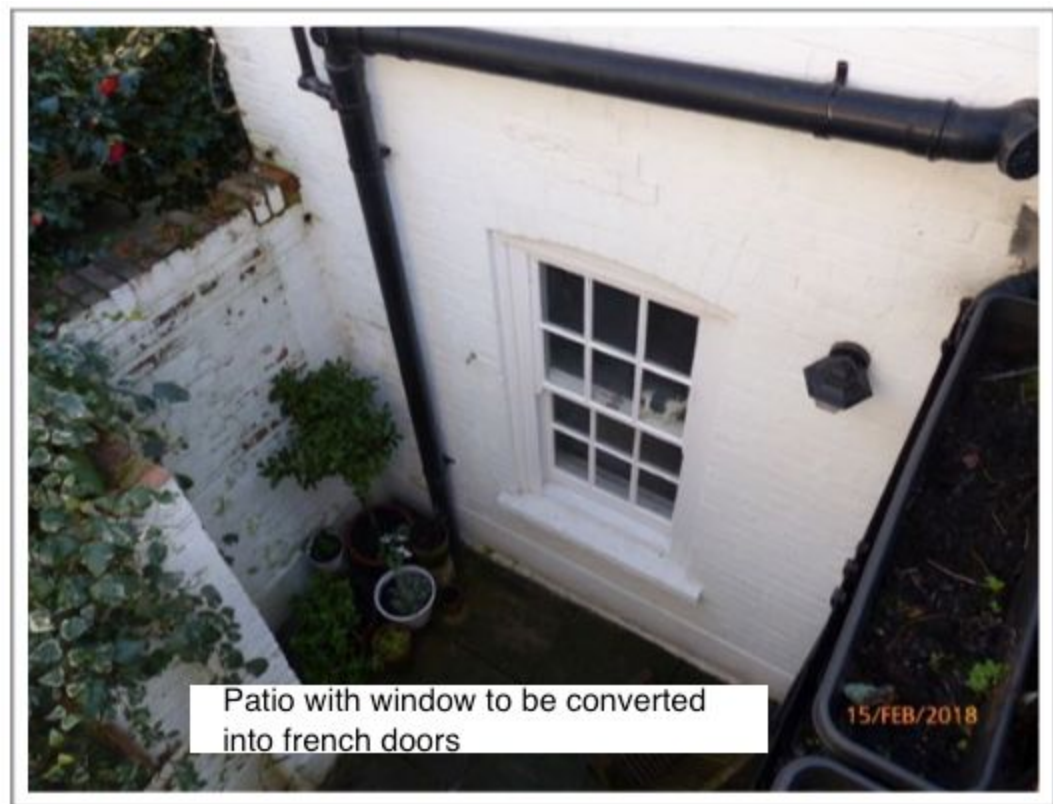
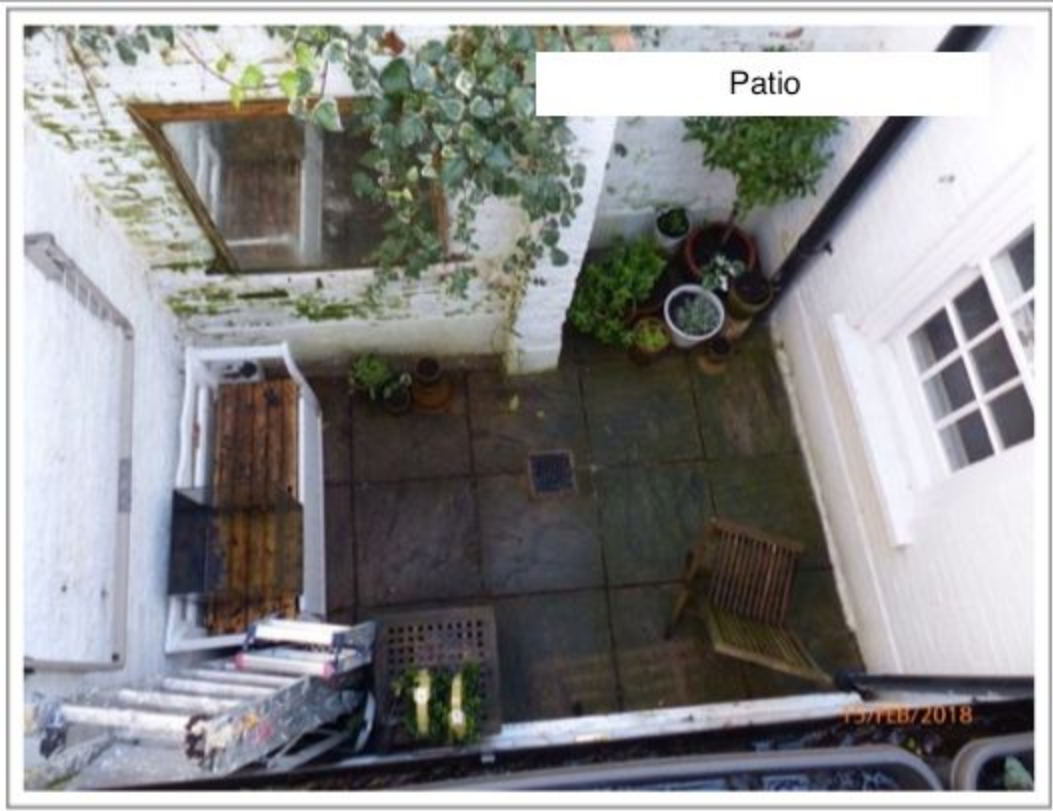
Interior view of skylight to be replaced with walk-on glass

15/FEB/2018



Skylight as proportion of terrace.
Size to remain the same.





- No photos available of rear roof elevation as it is almost impossible to get a view of it, so included is a google satellite view with red indicating the locations of the proposed roof lights. Exact positionings visible on scaled drawing attached as supporting document

